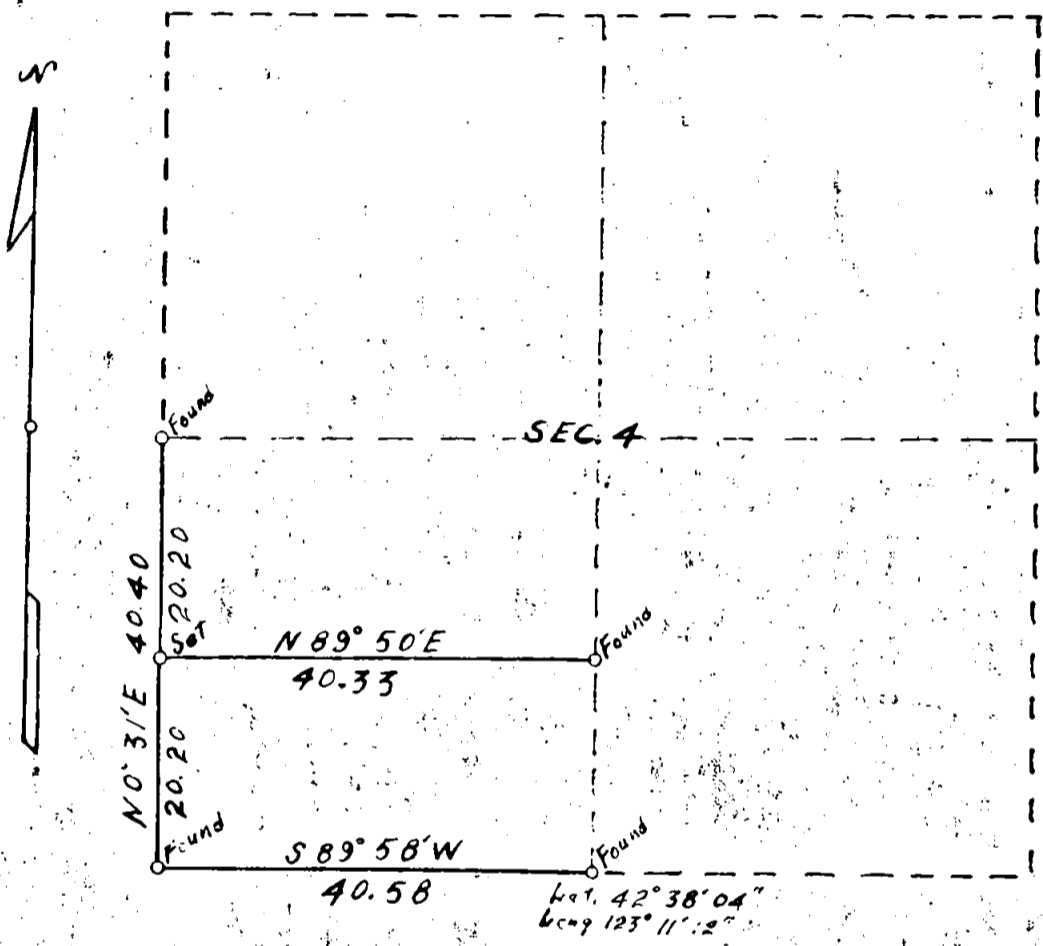


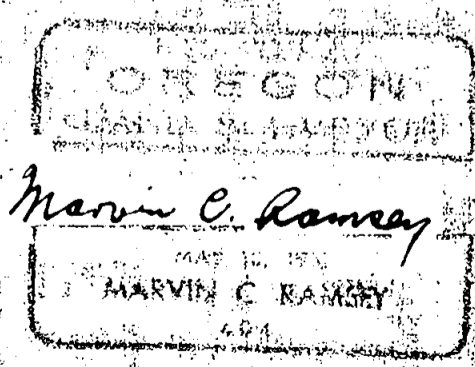
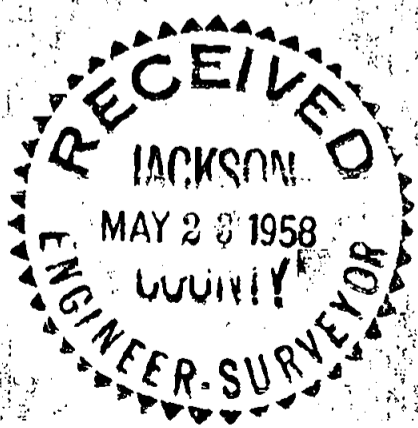
T 34S, R 4W, WILLAMETTE MER, ORE.
 DEPENDENT RESURVEY
 of Partial bdrs with partial subdivision of Sec. 4



Scale: 1 in = 20 chs. = 1320 ft. The bearings of all lines are referred to the true
 Mean Magnetic Declination $20^{\circ} 48' E$ meridian determined by solar observations
 o = Corner Occupied & Monumented
 ——— Line Surveyed - - - - - Line Not Retraced

Survey executed May 6 - 8, 1958 for Lloyd Timber Co.
 of Grants Pass, Ore.

I hereby certify that the survey represented by this plat is
 executed in conformity with the Laws of the State of Oregon.



TOWNSHIP 34 SOUTH, RANGE 4 WEST, WILLAMETTE MERIDIAN, OREGON

DEPENDENT RESURVEY OF PART OF THE SUBDIVISIONAL LINES,

AND

SURVEY OF PART OF THE SUBDIVISION OF SECTION 4

EXECUTED AT THE REQUEST OF LLOYD TIMBER CO.

OF

GRANTS PASS, OREGON

BY

Marvin C. Ramsey, registered Professional Land Surveyor.

Survey commenced May 6, 1958

Survey completed May 8, 1958