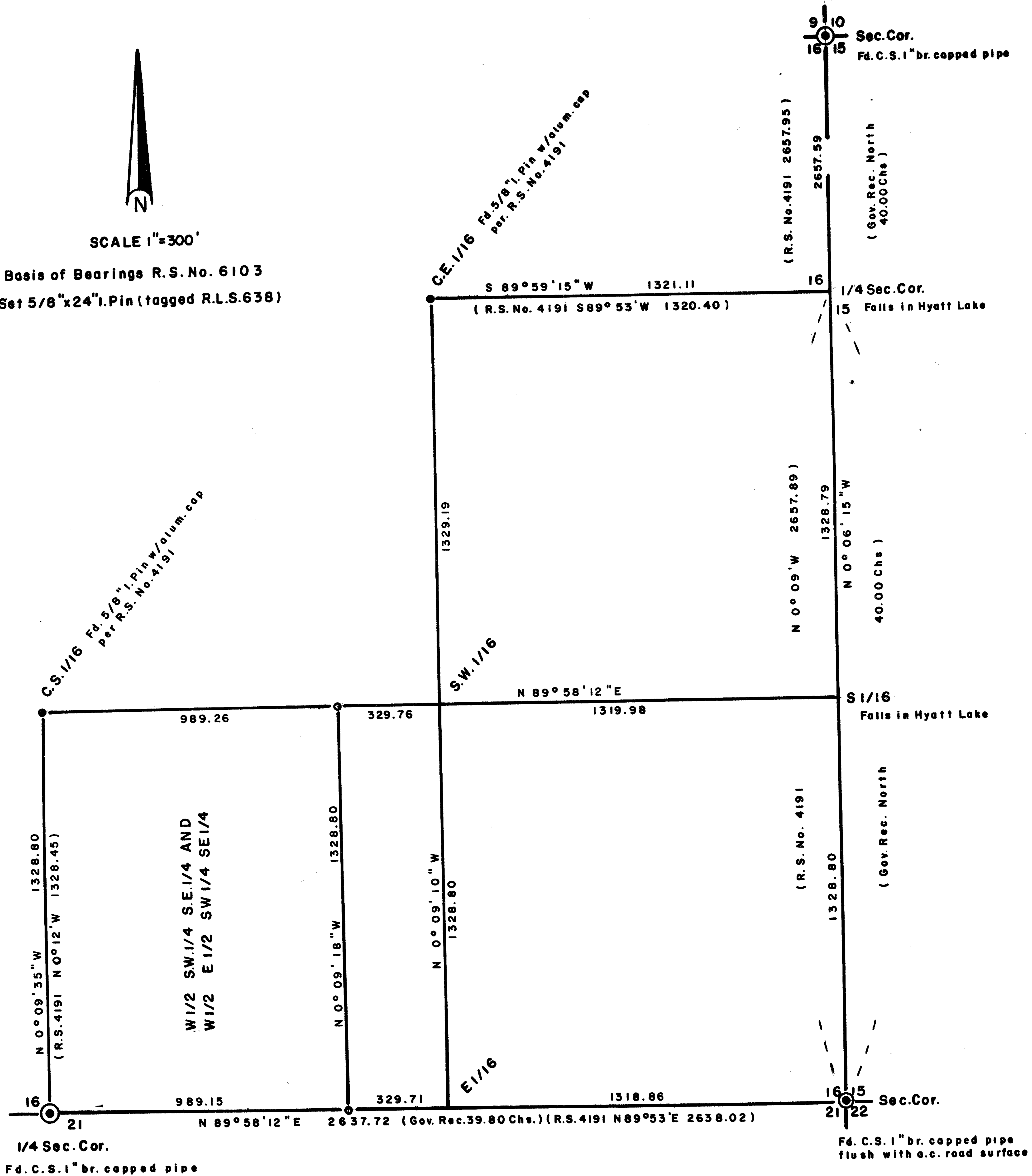


11145



SCALE 1"=300'

Basis of Bearings R.S. No. 6103  
o = Set 5/8"x24"l. Pin (tagged R.L.S.638)



\*\* RECEIVED \*\*  
 Date 4-12-88 By SK  
 This survey consists of:  
 / sheet(s) Map  
 / page(s) Narrative  
 JACKSON COUNTY  
 SURVEYOR

REGISTERED  
 PROFESSIONAL  
 LAND SURVEYOR  
*George Burrell*  
 OREGON  
 JULY 10, 1984  
 GEORGE R. BURRELL  
 638

MAP OF SURVEY  
 Located in S.E. 1/4 Section 16, T39S, R3E  
 For: TALENT IRRIGATION DISTRICT  
 By: George Burrell, Surveyor, 4/1/88

11145

11142 SURVEY NO.

SURVEY NARRATIVE TO COMPLY WITH O.R.S. 209.250

FOR:  
Talent Irrigation District  
P.O. Box 467  
Talent, Oregon 97540

PURPOSE:  
To monument the N.E. and S.E. corner of the W 1/2 of the E 1/2 of the S.W. 1/4 of the S.E. 1/4 of section 16, T39S, R3E

PROCEDURE:  
From found control monuments established during the course of Recorded Survey No. 6103, the S.W. and S. 1/4 corner of Section 16 was tied to along with the C.S. 1/16 and the C.E. 1/16 section corner monuments established by Recorded Survey No. 4191. With coordinate data thus developed, the subdivisional lines of the S.E. 1/4 were computed, from which the two corners were monumented as shown on the accompanying map.

BY:

George Burrell, R.P.L.S.  
1379 Brookdale  
Medford, Oregon 97504  
April 1, 1988

REGISTERED  
PROFESSIONAL  
LAND SURVEYOR  
*George Burrell*  
OREGON  
JULY 10, 1964  
GEORGE R. BURRELL  
638

\*\* RECEIVED \*\*  
Date 4-12-88 By (r)  
This survey Complies with:  
Shaded Map  
General Platting  
JACKSON COUNTY  
SURVEYOR