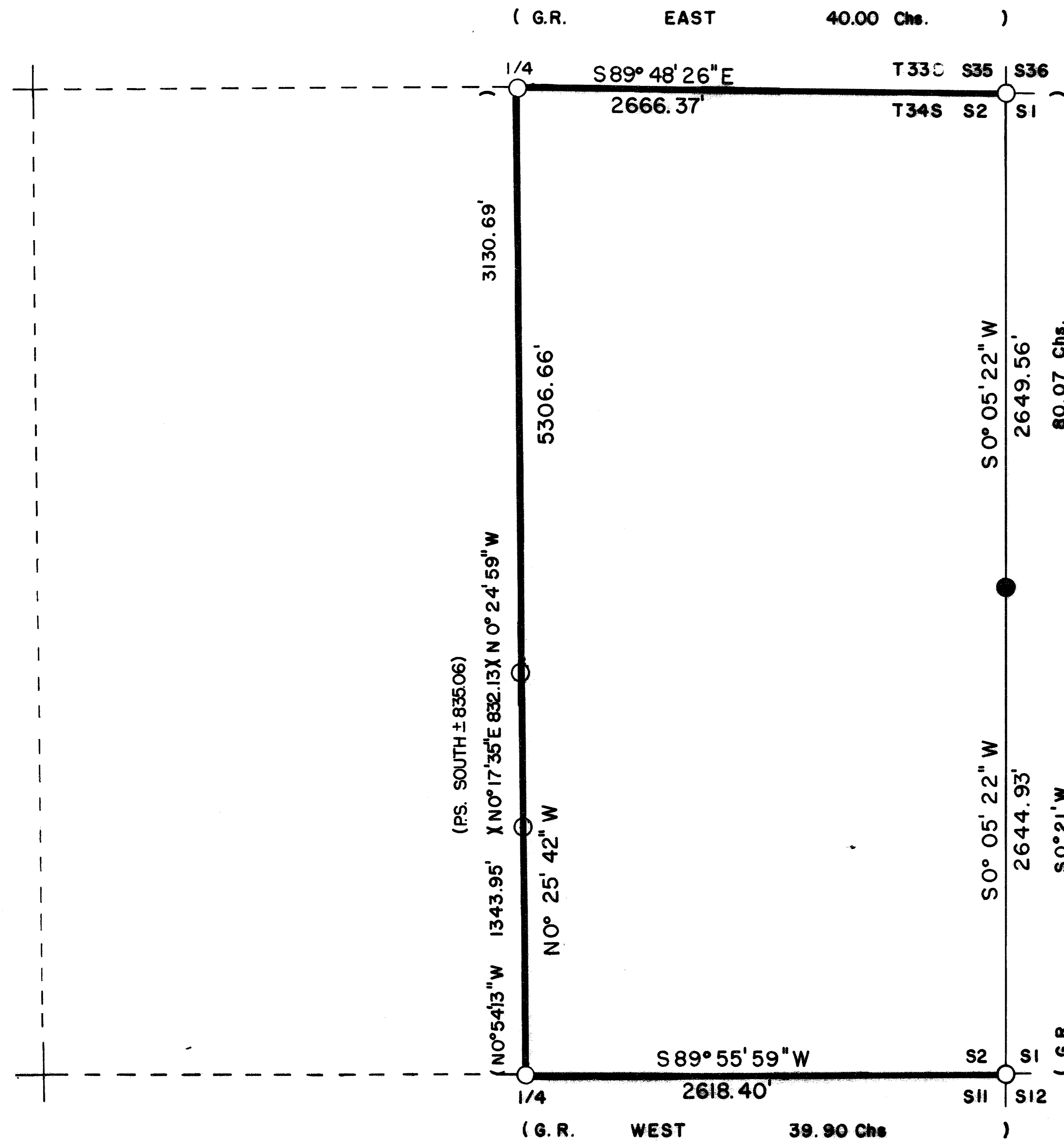
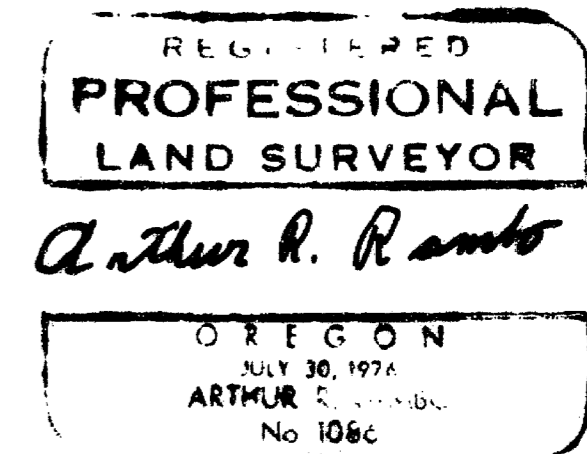


S2 T34S R1E W.M.



CERTIFICATE OF SURVEY

I, ARTHUR R. RAMBO, REGISTRATION No. 1086
 REGISTERED PROFESSIONAL LAND SURVEYOR
 STATE OF OREGON, HEREBY CERTIFY THAT
 THIS MAP CORRECTLY REPRESENTS A SURVEY
 MADE BY ME OR UNDER MY DIRECTION IN
 CONFORMANCE WITH THE LAWS OF THE
 STATE OF OREGON.



LEGEND

- FOUND COUNTY MONUMENT
- ① FOUND MONUMENT SET SURVEY No. 6621
- SET 5/8" BY 30" REBAR WITH 1/2" ALUM. CAP
- G.R. 1854 GOVERNMENT RECORD
- P.S. PRIVATE SURVEY No. 6621
- LINE POSTED AND BLAZED THIS SURVEY

SCALE

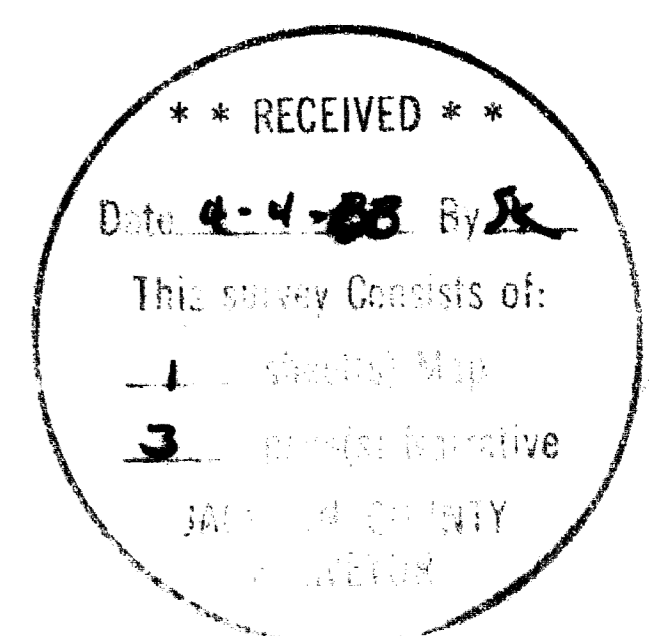
1" = 500'

DATE

MARCH 31, 1988

BASIS OF BEARING

SOLAR OBSERVATION



T34S R1E
1/4
S2 + S1
LS1096

From which:

A 5 1/2 inch dia. Fir bears N 23° 51' E 15.2 feet, marked 1/4S1 in upper face, BT in lower face.

An 8 1/2 inch dia. Fir bears S 31° 27' W 4.8 feet, marked 1/4S2 in upper face, BT in lower face.

REGISTERED
PROFESSIONAL
LAND SURVEYOR

Arthur R. Rambo

OREGON
JULY 30, 1976
ARTHUR R. RAMBO
No 1086

** RECEIVED **
Date 4-4-88 By SK
This survey consists of:
1 section map
3 acre certificate
JACKSON COUNTY
SURVEYOR

T34S R1E
 Sec $\frac{2}{11}$ | $\frac{1}{12}$ Cor
 CS
 1967

From which:

- A 12 inch dia. Oak bears N 32° 14' E 64.2 feet, no marks visible in opened upper face. BT Marked in opened lower face.
- An 8 inch dia. Fir bears N 34° 42' E 42.0 feet, unopened.
- An 38½ inch dia. Cedar bears S 47° 04' E 73.7 feet.
- A 19½ inch dia. Fir bears S 66° 18' W 48.9 feet, unopened.
- A 13 inch dia. Fir bears N 25° 53' W 37.1 feet, unopened.
- A 16 inch dia. Oak bears N 23° 10' W 32.6 feet, with opened upper and lower faces, no scribe visible.

One-quarter corner common to Sections 2 and 11, Township 34 South, Range 1 East, Willamette Meridian. At the corner location I found a Jackson County monument, exposed 1 inch in a mound of stone, marked:

Jackson County
 T34S R1E
 $\frac{1}{4}$ S $\frac{2}{11}$ 1975

From which:

- A 16½ inch dia. Pine bears N 61° 37' W 6.0 feet, with scribes visible in opened face.
- A 14 inch dia. Cedar bears N 25° 06' W 19.2 feet, marked CS in upper face, BT in lower face.
- A 10 inch dia. Fir bears N 36° 36' E 18.0 feet, unopened.
- A 17½ inch dia. Fir bears N 63° 46' E 3.9 feet, with scribes visible in open face.

One-quarter corner common to Section 35, Township 33 South, Range 1 East, and Section 2, Township 34 South, Range 1 East, Willamette Meridian. At the corner location I found a 4 inch dia. bronze disc on 1½ inch dia. iron pipe, exposed 16 inches, set in cement in a mound of stone, marked:

Corps of Engineers
 T33S R1E
 $\frac{1}{4}$ $\frac{S35}{S2}$
 T34S
 JC
 1968
 War Department U.S. Army

From which:

- A 20½ inch dia. Oak bears S 70° 22' E 216.3 feet, marked CS in upper face, BT in lower face.
- A 17½ inch dia. Fir bears N 32° 57' E 127.3 feet, marked S in a partially healed upper face, BT in lower face, BT in an open middle face of a different age than upper and lower faces.
- A 30 inch dia. Oak shell bears N 30° 39' E 120.6 feet, with no scribe visible in opened face.

CORNERS SET THIS SURVEY:

All measurements to bearing trees are to the center of tree at the base unless otherwise stated. All bearing trees have a brass washer marked LS 1086 nailed to the lower face.

One-quarter corner common to Sections 1 and 2, Township 34 South, Range 1 East, Willamette Meridian. At the corner location I set a 5/8 by 36 inch rebar, exposed 14 inches with a 1½ inch dia. Alum. cap, marked:

SURVEY NARRATIVE TO COMPLY WITH O.R.S. 209.250

Location: East Half of Section 2, Township 34 South, Range 1 East, Willamette Meridian, Jackson County, Oregon.

Survey for: Medford Corporation
P. O. Box 550
Medford, Oregon 97501

Survey by: Arthur R. Rambo FLS 1066
735 Vista Park Drive
Eagle Point, Oregon 97524

Date: April 4, 1988

Purpose: To mark and post the boundaries of Medford Corporation lands in the East half of said Section 2.

Procedure: The original survey of Section 2 was completed by Ives and Hyde under Contract #47 dated August 18, 1854. The Northeast, Southeast, South one-quarter, and North one-quarter corners have been reestablished by the Jackson County Surveyor.

I performed a closed traverse survey around the East one-half of said Section 2. I found pins set by Loyd R. Moffit near the North-South centerline of said Section 2. I found no evidence of the East one-quarter corner. I calculated a position for this corner and made another search for original evidence but found none. I set the East one-quarter corner by proportion measurement and posted lines as shown on the plat to accompany this narrative.

Date:

Basis of Bearing: Solar Observation.

CORNERS FOUND AND ACCEPTED FOR CONTROL:

All measurements to bearing trees are to the center of tree at the base unless otherwise stated.

Section corner common to Sections 35 and 36, Township 33 South, Range 1 East, and Sections 1 and 2, Township 34 South, Range 1 East. At the corner location I found a County monument, 2½ inch dia. Bronze Disc exposed 7 inches in a mound of stone, marked:

T33&34S R1E
Sec 35 | 36 Cor
2 | 1
CS
1967

From which:

- A 13½ inch dia. Fir bears N 46° 42' W 15.8 feet, unopened.
- An 8½ inch dia. Fir bears N 49° 13' E 13.3 feet, unopened.
- A 36 inch dia. Fir stump bears S 64° 23' E 37.5 feet, with scribe visible in opened upper face.
- A 13½ inch dia. Fir bears S 66° 49' W 39.5 feet, unopened.

Section corner common to Sections 1, 2, 11, and 12, Township 34 South, Range 1 East, Willamette Meridian. At the corner location I found a Jackson County monument, exposed 3 inches, marked:

Tax Lot #34-1E-0200