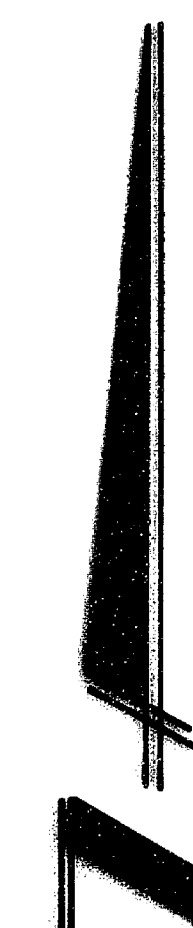
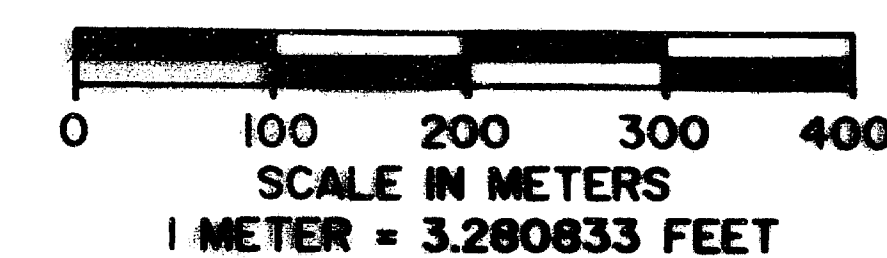
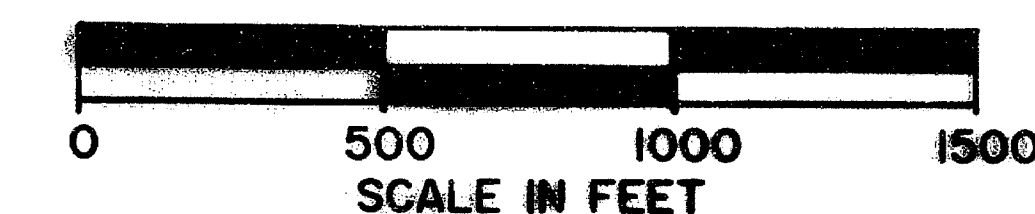


**MAP OF SURVEY  
FOR  
ROGUE RIVER NATIONAL FOREST**  
P.O. BOX 520  
MEDFORD, OREGON  
DECEMBER 28, 1987

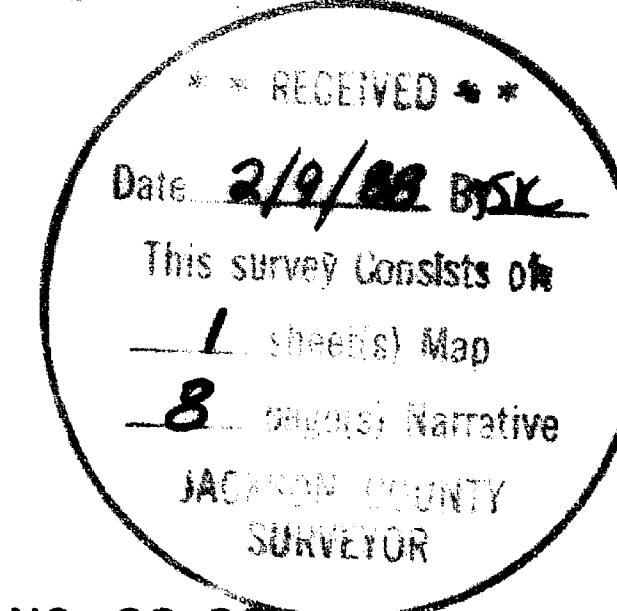
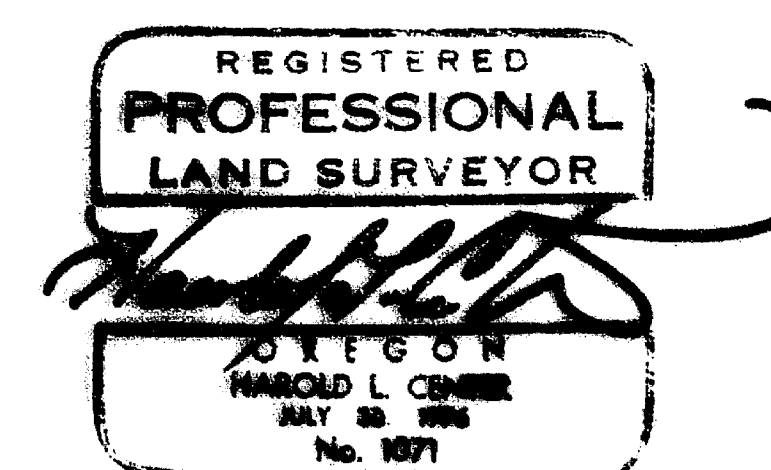


BASIS OF BEARING: SOLAR OBSERVATION



**CERTIFICATE OF SURVEY**

I, HAROLD L. CENTER, REGISTRATION NO. 1071, REGISTERED PROFESSIONAL LAND SURVEYOR, STATE OF OREGON, HEREBY CERTIFY THAT THIS PLAT CORRECTLY REPRESENTS A SURVEY MADE BY ME OR UNDER MY DIRECT SUPERVISION IN CONFORMANCE WITH THE LAWS OF THE STATE OF OREGON AT THE REQUEST OF THE UNITED STATES FOREST SERVICE.

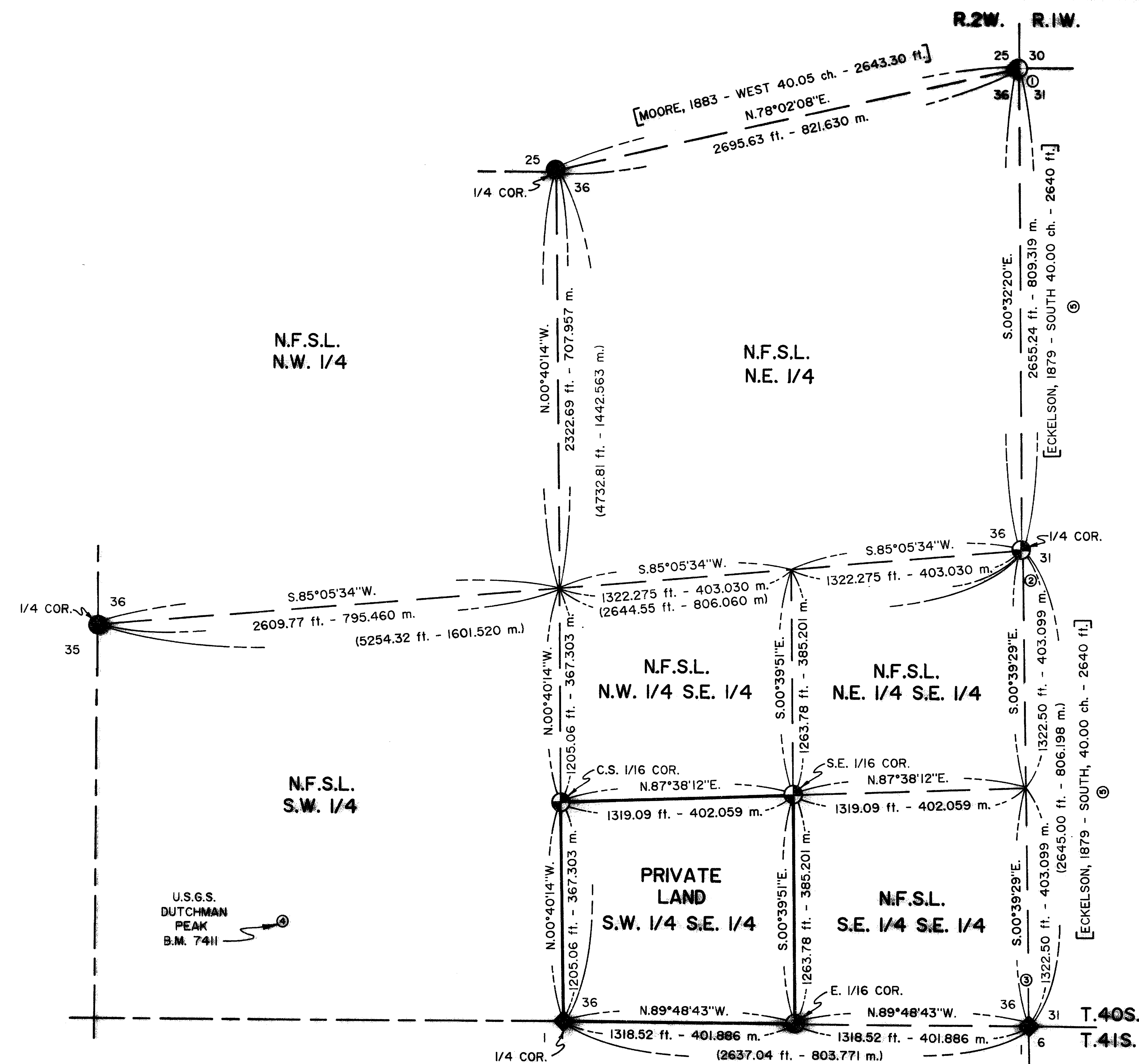


PROJECT NO. 88-28

U.S. DEPARTMENT OF AGRICULTURE  
FOREST SERVICE  
REGION 6 - ROGUE RIVER NATIONAL FOREST

**DEPENDENT RESURVEY  
AND  
SECTION SUBDIVISION**  
SECTION 36, T.40S., R.2W., W.M.  
JACKSON COUNTY, OREGON

REVIEWED BY: *John W. Bull* DATE: 2/5/88  
REVIEWED BY: *Paul Ewing* DATE: 2/18/88



**HISTORY OF SURVEYS**

THE ORIGINAL EXTERIOR BOUNDARY OF TOWNSHIP 40 SOUTH, RANGE 2 WEST, W.M. WAS SURVEYED BY MCKENZIE AND ECKELSON, CONTRACT NO. 328 DATED JUNE 17, 1879, PLAT APPROVED DECEMBER 10, 1879.

THE ORIGINAL SUBDIVISION OF TOWNSHIP 40 SOUTH, RANGE 2 WEST, W.M. WAS SURVEYED BY RUFUS S. MOORE, CONTRACT NO. 475 DATED JULY 3, 1885, PLAT APPROVED APRIL 10, 1884.

THE SOUTH BOUNDARY OF SECTION 36, TOWNSHIP 40 SOUTH, RANGE 2 WEST, W.M. WAS RESURVEYED BY MARSHALL S. WRIGHT UNDER SPECIAL INSTRUCTIONS DATED AUGUST 19, 1916 - GROUP 31, PLAT APPROVED FEBRUARY 7, 1918.

THE RANGE LINE BETWEEN SECTION 31, RANGE 1 WEST AND SECTION 36, RANGE 2 WEST, W.M., WAS RESURVEYED BY EDWARD MCGINTY, P.L.S. NO. 301, DECEMBER 1973 DURING RECORD SURVEY NO. 5506.

THE NORTHEAST SECTION CORNER FOR SECTION 36, TOWNSHIP 40 SOUTH, RANGE 2 WEST, W.M., WAS REMONUMENTED FROM ORIGINAL EVIDENCE BY MALCOLM N. CLARK, P.L.S. NO. 601, OCTOBER 15, 1981 DURING RECORD SURVEY NO. 9121.

NO OTHER SURVEYS ARE OF RECORD.

**NOTES**

- ① A 5/8 INCH IRON PIN WITH ACCESSORIES SET BY EDWARD MCGINTY, P.L.S. 301, DURING RECORD SURVEY NO. 5506, BEARS S.40°33'11"E., 71.62 FT. DISTANCE FROM THE N.E. CORNER SECTION 36.
- ② AN UNRECORDED 5/8 INCH IRON PIN BEARS S.03°57'21"E., 181.17 FT. DISTANCE FROM THE EAST 1/4 CORNER SECTION 36.
- ③ AN UNRECORDED 3/8 INCH IRON PIN BEARS N.01°31'06"W., 252.42 FT. DISTANCE FROM THE S.E. CORNER SECTION 36.
- ④ A U.S.G.S. VERTICAL ANGLE BENCHMARK STAMPED 7411 1932, SET IN A ROCK OUTCROP 17.7 FEET NORTH OF DUTCHMAN PEAK LOOKOUT HOUSE, USED AS TRAVERSE POINT FOR CONTROL SURVEY, BEARS N.71°15'03"W., 1887.16 FEET FROM THE 1/4 CORNER OF SECTIONS 36 AND 1.
- ⑤ SURVEYOR MCGINTY DID NOT FIND THE ORIGINAL CORNER POINTS, THEREFORE HIS RETURNED DISTANCES AND BEARINGS ARE NOT SHOWN ON THIS PLAT.

**LEGEND**

- JACKSON COUNTY SURVEYOR MONUMENT
- ◆ GENERAL LAND OFFICE MONUMENT SET BY WRIGHT, 1916.
- MONUMENT SET FROM EVIDENCE BY MALCOLM CLARK, P.L.S. 601, DURING RECORD SURVEY NO. 9121 DATED OCTOBER 15, 1981.
- 2 1/2 INCH DIAMETER BY 32 INCH LONG IRON POST WITH A 2 1/2 INCH DIAMETER BRASS CAP MONUMENT SET THIS SURVEY.
- SEE NOTES
- CALCULATED LINE FROM TRAVERSE SURVEY
- LINE POSTED AND BLAZED THIS SURVEY
- [ ] GOVERNMENT RECORD
- N.F.S.L. NATIONAL FOREST SYSTEM LANDS

SURVEY NO. 11111

Page 8 of 8

A 22-inch diameter fir bears S.49°08'E., 90.20 feet distance, scribed E 1/16S1  
LS1071 BT.

December 28, 1987

HAROLD L. CENTER  
Registered Professional Land Surveyor  
Oregon Certificate No. 1071

REGISTERED  
PROFESSIONAL  
LAND SURVEYOR

*Harold L. Center*

OREGON  
HAROLD L. CENTER  
JULY 30 1976  
No. 1071

\*\* RECEIVED \*\*  
Date 2/9/88 By SK  
This survey Consists of:  
1 sheet(s) Map  
8 page(s) Narrative  
JACKSON COUNTY  
SURVEYOR

A 10-inch diameter hemlock bears S.05°17'W., 9.80 feet distance, scribed CS 1/16 LS1071 BT.

A 7-inch diameter hemlock bears N.33°45'E., 17.30 feet distance, scribed X BT.

The southeast one-sixteenth corner for Section 36, Township 40 South, Range 2 West, W.M.

At the corner point, I set a 2 1/2-inch diameter by 32-inch long iron post with a 2 1/2-inch diameter brass cap monument marked:

T40S R2W  
SE 1/16 — S36  
1987  
LS 1071

and mark the following accessories:

A 7-inch diameter fir bears S.34°04'W., 120.70 feet distance, scribed X BT.

A 20-inch diameter fir bears N.29°25'W., 72.40 feet distance, scribed SE 1/16S36 LS1071 BT.

The east one-sixteenth corner for Section 1, Township 41 South, Range 2 West, and Section 36, Township 40 South, Range 2 West, Willamette Meridian.

At the corner point, I set a 2 1/2-inch diameter by 32-inch long iron post with a 2 1/2-inch diameter brass cap monument marked:

T40S R2W  
E1/16 — S36  
S1  
T41S  
1987  
LS 1071

and mark the following accessories:

A 19-inch diameter fir bears N.76°11'E., 67.10 feet distance, scribed E 1/16S36 LS1071 BT.

The one-quarter corner for Section 36, Township 40 South, Range 2 West, and Section 31, Township 40 South, Range 1 West, Willamette Meridian, Jackson County, Oregon.

At the corner location, I found a 40-inch diameter fir with scribing 1/4S visible after I opened a 15-inch deep blaze. At the corner point, as determined by bearing and distance from the only remaining bearing tree, I set a 2 1/2-inch diameter by 32-inch long iron post, with a 2 1/2-inch diameter brass cap monument marked:

T 40 S  
1/4  
R2W | R1W  
S36 | S31  
1987  
LS 1071

A 40-inch diameter fir bears S.78°30'E., 36.70 feet distance to the center side, with scribing 1/4S visible on a 15-inch deep opened blaze.

Accessories marked this survey:

a 30-inch diameter fir bears S.11°28'W., 91.50 feet distance, scribed 1/4S36 LS1071 BT.

A 30-inch diameter fir bears S.56°30'E., 84.20 feet distance, scribed 1/4S31 LS1071 BT.

CORNERS ESTABLISHED THIS SURVEY

Center-south one-sixteenth corner, Section 36, Township 40 South, Range 2 West, W.M.

At the corner point, I set a 2 1/2-inch diameter by 32-inch long iron post with a 2 1/2-inch diameter brass cap monument marked:

T40S R2W  
C  
S 1/16 | S36  
C  
1987  
LS1071

and mark the following accessories:

A 16-inch diameter fir bears N.20°07'W., 25.30 feet distance, with fragmentary scribing visible on a partly-healed double blaze.

An 18-inch diameter fir bears N.76°28'E., 19.30 feet distance, with fragmentary scribing visible on a partly-healed double blaze.

A 34-inch diameter fir bears S.21°36'E., 110.70 feet distance, with fragmentary scribing visible on a partly-healed double blaze.

A 5/8-inch diameter rebar with 1-inch diameter aluminum cap (with accessories) set by Edward McGinty, P.L.S. No. 301, per survey 5506, bears S.40°33'11"E., 71.62 feet distance.

The Corner for Townships 40 and 41 South, Ranges 1 and 2 West, Willamette Meridian, Jackson County, Oregon.

At the corner point, I found a 3 1/2-inch diameter General Land Office monument protruding 6 inches above a mound of stone, marked:

U.S. GENERAL LAND OFFICE

T40S	
R2W	R1W
S36	S31
S1	S6
T41S	

WRIGHT  
-1916-  
SURVEY

and the following accessories:

A 44-inch diameter fir bears N.36°27'E., 41.10 feet distance, with a healed blaze.

A 24-inch diameter fir bears S.09°17'E., 50.00 feet distance, with a healed blaze.

A 25-inch diameter fir bears S.73°45'W., 23.20 feet distance, with a healed blaze.

An 18-inch diameter fir bears N.33°50'W., 67.00 feet distance, with a healed blaze.

An unrecorded 3/8-inch diameter iron pin bears N.01°31'06"W., 252.42 feet distance.

One-quarter corner for Sections 25 and 36, Township 40 South, Range 2 West, W.M., Jackson County, Oregon.

At the corner point, I found a Jackson County Surveyor brass cap monument protruding 6 inches above ground, marked:

JACKSON COUNTY

T40S	R2W
25	1/4S
36	

1980

and the following accessories:

A 12-inch diameter fir bears N.02°32'W., 16.10 feet distance, with fragmentary scribing visible on a partly-healed blaze.

A 16-inch diameter fir bears S.42°33'W., 67.80 feet distance, with fragmentary scribing visible on a partly-healed blaze.

A 28-inch diameter fir bears N.11°27'W., 137.80 feet distance, with scribing "BT" visible on an opened blaze.

NOTE: Dutchman Peak Lookout House bears S.20°04'W.

The section corner for Sections 25 and 36, Township 40 South, Range 2 West, and Sections 30 and 31, Township 40 South, Range 1 West, W.M., Jackson County, Oregon.

At the corner point, I found a 2 1/2-inch diameter brass cap monument set flush with a mound of stone, marked:

T 40 S	
R2W	R1W
S25	S30
S36	S31

1981

RPLS 601

and the following accessories:

A 47-inch diameter fir bears N.49°02'W., 15.50 feet distance, with fragmentary reverse scribing found on loose piece of wood inside an opened upper blaze. Lower blaze is healed.

A 29-inch diameter fir bears S.54°31'W., 62.10 feet distance, with scribing "T40SR2WS36" visible on an upper blaze. Lower blaze is scribed "BT" with a 3/4-inch washer stamped LS601 attached.

CORNERS ACCEPTED FOR CONTROL

One-quarter corner for Section 36, Township 40 South, Range 2 West, and Section 1, Township 41 South, Range 2 West, W.M., Jackson County, Oregon.

At the corner point, I found a General Land Office monument protruding 9 inches above ground, on the south side of a 3 1/2-foot x 1 1/2-foot mound of stone, marked:

U.S. GENERAL LAND OFFICE

1/4  $\frac{S36}{S1}$

1916 - SURVEY

No trees within limits.

From this corner:

A P-K nail in rock bears N.19°08'28"W., 443.66 feet distance

The east one-sixteenth corner for Sections 36 and 1 is visible, and bears S.89°48'43"E., 1,318.52 feet distance.

One-quarter corner for Sections 35 and 36, Township 40 South, Range 2 West, W.M., Jackson County, Oregon.

At the corner point, I found a Jackson County Surveyor brass cap monument protruding 4 inches above ground, marked:

JACKSON COUNTY

T40S R2W  
1/4 S35 | S36

1976

and the following accessories:

A 48-inch diameter fir bears S.81°58'W., 94.40 feet distance, with scribing -S- visible on an open blaze.

A 20-inch diameter fir bears S.89°13'W., 44.10 feet distance, with a healed blaze.

a 29-inch diameter hemlock bears S.69°08'E., 56.20 feet distance, with a double healed blaze.

The west one-quarter corner for Section 36, Township 40 South, Range 2 West, W.M., was remonumented from original evidence by the Jackson County Surveyor on October 7, 1976.

The north one-quarter corner for Section 36, Township 40 South, Range 2 West, W.M., was remonumented from original evidence by the Jackson County Surveyor on July 10, 1980.

No other surveys are of record.

**PROCEDURE:** Prior to commencement of this survey, I verified the position of all controlling section and one-quarter section corner points, with the exception of the east one-quarter corner for Section 36. I then established a series of traverse lines, tying all found corners to part of a closed traverse. From this data, a search area was computed for the one-quarter corner for Section 36, Township 40 South, Range 2 West, and Section 31, Township 40 South, Range 1 West, W.M. After an extensive investigation, the original southeast bearing tree, now a 40-inch diameter fir, was recovered. I remonumented said corner point at record bearing and distance from the only remaining accessory.

With all controlling corners verified and tied to a closed traverse, I computed the subdivision of Section 36. A series of closed traverses were run, establishing temporary positions for the following corners: East one-sixteenth corner on the south line of Section 36; the center-south one-sixteenth corner for Section 36; and the southeast one-sixteenth corner for Section 36. I then closed all traverses to the exterior control traverse, calculated corner moves and set monuments at each corner point as shown on the attached map of survey and as described within this narrative.

The true property boundary lines, as shown on the attached map of survey, were posted with six-foot aluminum posts with property boundary signs attached. The few trees found along line were blazed and painted with red timber-marking paint.

**BASIS OF BEARING:** Solar observation at the south one-quarter corner, Section 36.

**EQUIPMENT:** Equipment utilized throughout this survey includes Wild T-2 theodolite and Sokkisha Red 2L electronic distance meter.



SURVEY NARRATIVE TO COMPLY WITH  
PARAGRAPH 209.250 OREGON REVISED STATUTES

- SURVEY FOR: Rogue River National Forest  
P. O. Box 520  
Medford, OR 97501
- LOCATION : Section 36, Township 40 South, Range 2 West, Willamette  
Meridian, Jackson County, Oregon
- PURPOSE : To establish property corners, and mark and post the boundaries  
between private and National Forest lands within Section 36.
- HISTORY OF SURVEYS : The original south and east exterior boundaries of Township 40  
South, Range 2 West, Willamette Meridian, were surveyed by  
McKenzie and Eckelson under Contract No. 328 in 1879; plat  
approved 12/10/1879.

The subdivision of Township 40 South, Range 2 West, Willamette  
Meridian, was performed by Rufus S. Moore under contract 475 in  
1883; plat approved 04/10/1884.

The south boundary of Section 36 was resurveyed by Marshall S.  
Wright under Special Instructions dated 08/19/1916 - Group 31.  
Wright re-established the south one-quarter and southwest section  
corners for Section 36 during this resurvey; plat approved  
02/07/1918.

The east boundary of Section 36 was resurveyed by Edward A.  
McGinty, P.L.S. No. 301, during a dependent resurvey of Section  
31, Township 40 South, Range 1 West, W.M. Surveyor McGinty did  
not find the original east one-quarter or northeast section cor-  
ners for Section 36, Township 40 South, Range 2 West, W.M., during  
his resurvey. Surveyor McGinty re-established his own section  
corner for Sections 25 and 36, Township 40 South, Range 2 West,  
W.M., and Sections 30 and 31, Township 40 South, Range 1 West,  
W.M., in 1973. Refer to record survey No. 5506, dated December  
1973.

Original evidence of the section corner for Sections 25 and 36,  
Township 40 South, Range 2 West, and Sections 30 and 31, Township  
40 South, Range 1 West, W.M., was recovered by Malcolm N. Clark,  
P.L.S. No. 601, in 1981. This corner was remonumented by surveyor  
Clark during record survey No. 9121, dated October 15, 1981.