

SURVEY FOR: GEORGE HEARY	
LOCATION: EAST 1/2 OF SECTION 12 & NE 1/4 OF SECTION 13, T. 36 S., R. 23 E. N.M., JACKSON COUNTY, OREGON	
DATE: MAY 1925 - DEC. 1927	REGISTERED PROFESSIONAL SURVEYOR <i>Darrel W. Edwards</i> OF OREGON DARREL W. EDWARDS 741
SCALE: 1" = 500'	
(●) MONUMENTS FOUND (○) SET 6/8" x 24" STEEL PIN () RECORD MEASUREMENT	

SURVEY NARRATIVE TO COMPLY WITH PARAGRAPH 209.250, OREGON REVISED STATUTES.

SURVEY FOR: George Neary
c/o Dan Frank, Landline Realty
2568 St. Charles Way
Medford, Or. 97504

LOCATION: South 1/2 of Section 1, Township 36 South, Range 3 West of the Willamette Meridian. East 1/2 of Section 12, Northeast 1/4 of Section 13, Township 36 South, Range 3 West of the Willamette Meridian, Jackson County, Oregon.

PURPOSE: Survey Lot Line Adjustments approved by the Jackson County Department of Planning and Development.

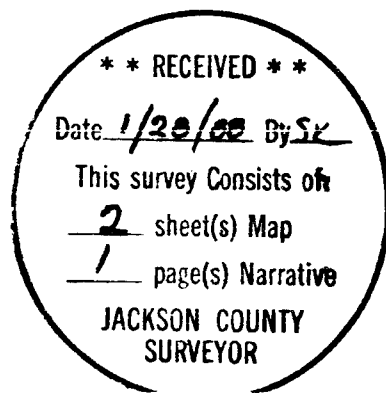
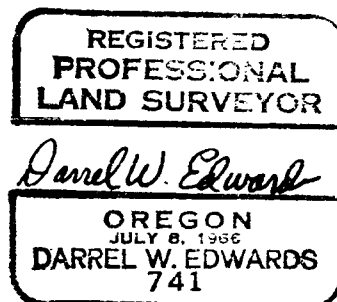
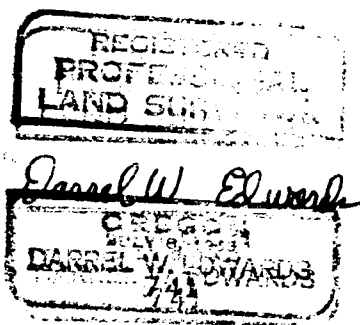
PROCEDURE: Traversed from B.L.M. monument marking the North 1/4 corner of Section 12 to Jackson County monument marking the Northeast corner of said Section 12. Set East 1/16 corner by proportionate measure. Traversed from said North 1/4 corner to John Day Drive; thence traversed Southerly along John Day Drive to Gold Rey Subdivision. Made ties to lot corners and initial corner of Gold Rey Subdivision as shown on the accompanying plat; continued traverse to B.L.M. monument marking the Southeast corner of said Section 12; thence traversed West to approximate East 1/16 corner on South line of Section 12; thence traversed North to East 1/16 corner on North line of Section 12. Calculated John Day right of way from plat of Gold Rey Subdivision and Department of Public Works notes and plat. Set new property corners and witness corners as shown on the accompanying plats. Set 5/8" by 2 1/2" steel pins with yellow plastic caps stamped "DW EDWARDS-PLS 741. East 1/16 corner on North line of Section 12 blazed a 5" W. Oak N. 22° E. 10.5 feet and a 5" W. Oak N. 63° W. 3.83 feet.

EQUIPMENT: Lietz TM 200 theodolite, Lietz Red-1 E.D.M. and 200 foot steel tape.

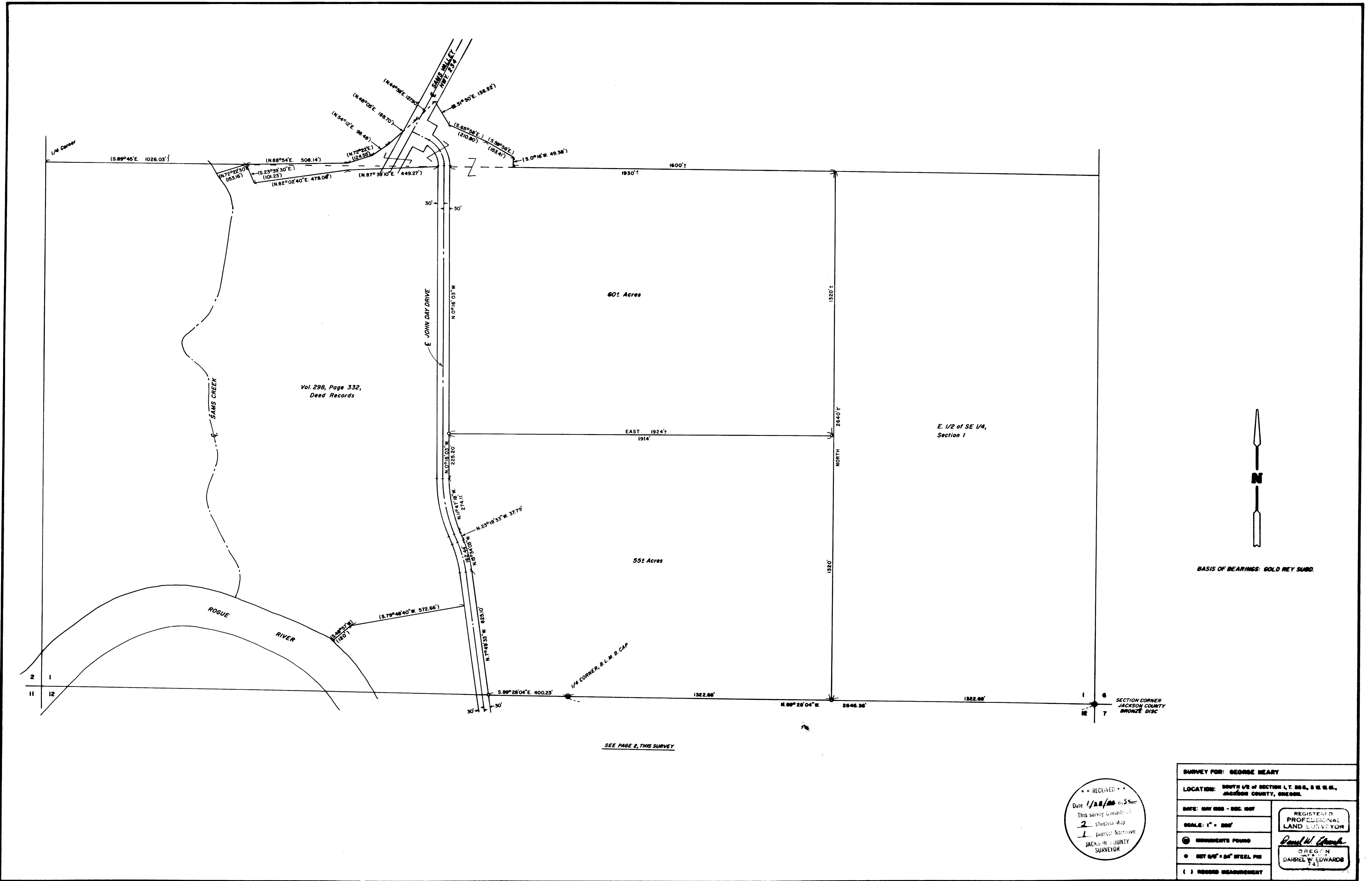
BASIS OF BEARINGS: GOLD REY SUBDIVISION

DATE COMPLETED: December 30, 1987

SURVEY BY: Darrel W. Edwards
2000 Brookhurst #27
Medford, Or. 97504
phone 776-2313



T. 36 - 3 W., Sec. 1, T.L. 600
T. 36 - 2 W., Sec. 12, T.L. 100 & 502
T. 36 - 2 W., Sec. 13, T. L. 100



SURVEY FOR: GEORGE HEARY	
LOCATION: SOUTH 1/2 OF SECTION 1, T. 28 S., R. 12 E., JACKSON COUNTY, OREGON.	
DATE: MAY 1928 - DEC. 1927	REGISTERED PROFESSIONAL LAND SURVEYOR <i>Darrel W. Edwards</i> OREGON DARREL W. EDWARDS 741
SCALE: 1" = 200'	
REGISTERS FOUND	
SET 60' x 60' STEEL PIN	
ROUND MEASUREMENT	

RECEIVED
Date 1/28/28 to S
This survey consists of
2 sheets and
1 parcel Narrative
JACKSON COUNTY SURVEYOR