

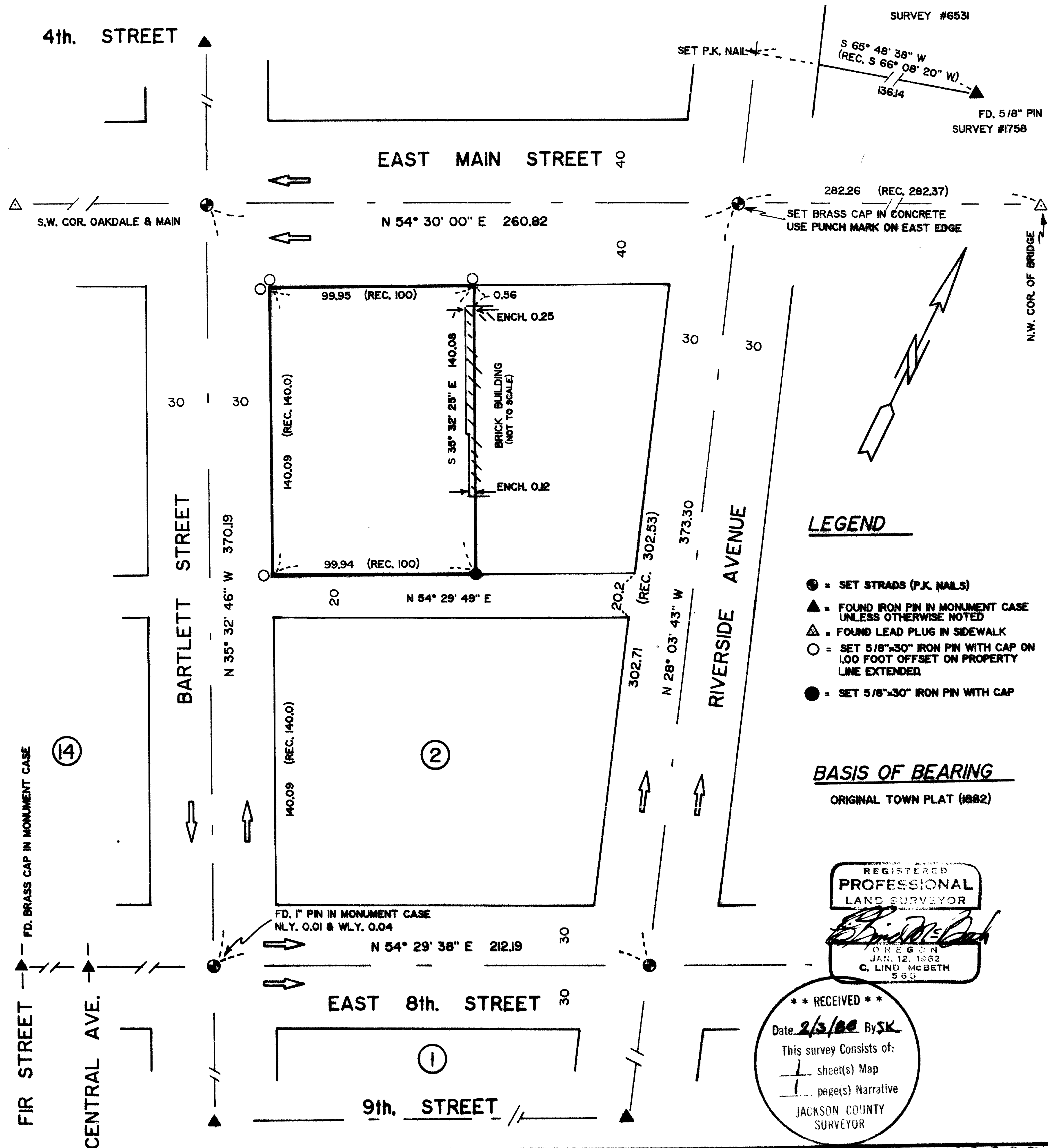
11085

SURVEY FOR CITY OF MEDFORD

LOTS 4,5,6&7 OF BLOCK 2
ORIGINAL TOWN OF MEDFORD
JACKSON COUNTY, OREGON

C. LIND McBETH L.S.
JANUARY 29, 1988

MEDFORD, OREGON
SCALE: 1"=40'



11085

SURVEY NARRATIVE TO COMPLY WITH ORS 209-250

Survey for: City of Medford
411 W. 8th Street
Medford, OR 97501

Date: January 29, 1988

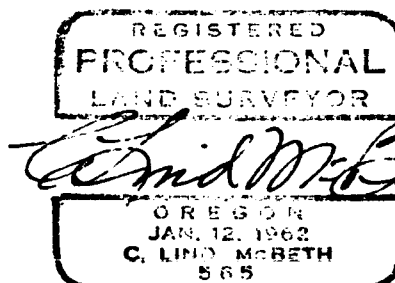
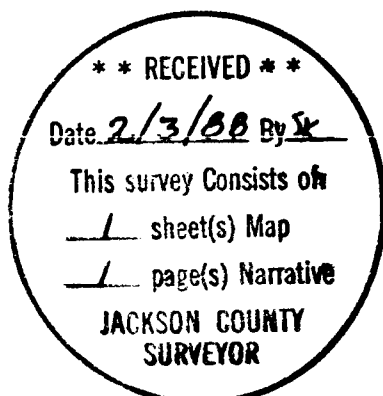
Basis of Bearing: Original Town Plat (CIRCA 1882)
City of Medford, Jackson Co. OR.

Location: Lots 4, 5, 6, and 7 of Block 2, Original Town of Medford
City of Medford, Jackson Co. OR.

Survey by: C. Lind McBeth, L.S.
411 W. 8th Street
Medford, OR 97501

Survey Procedure: Used the following monuments for control of the outside boundaries of Block 2, Original Town of Medford

- a. Centerline of Bartlett Street was controlled from monuments at 9th Street and 4th Street, with strads set at 8th Street and Main Street.
- b. Eighth Street was controlled from monuments at Central Avenue and Fir Street, produced east and strads set at Bartlett Street and Riverside Avenue. There are no available references to use at 8th and Riverside due to sidewalk re-construction; hence, the reason for producing 8th Street centerline easterly.
- c. Main Street centerline was controlled by information from Boyden Surveyors; a lead plug in sidewalk at the Southwest corner of Main and Oakdale and a lead plug in sidewalk near the Northwest end of Bear Creek Bridge.
- d. Centerline of Riverside was controlled at the South end, from the monument found at 9th Street, then to determine our control north of Main we used a pin found from R.S. #1758 which was incorporated in R.S. #6531. From this alignment strads were set at Main Street and 8th Street, thus avoiding an angle point at Main and Riverside and more closely resembling the record distance from centerline Bartlett to centerline Riverside, on Main Street. On 1-14-88 we dug a hole at the west line of Riverside and the centerline of Main in search of a stone called in F.A. Piel' deed (unrecorded) August 1910. We found no sign of a lead plug in the concrete, we then broke out the concrete paving and went below the tracks and the ballast and probed into the subgrade but did not find said stone. See City of Medford Field Book #1591. From our true centerline intersection of Riverside and Main, the distance easterly along Main to the lead plug on the bridge sidewalk, is measured at 282.26 feet, (Boyden record 282.37). We then prorated Block 2 from the measured angles and distances and 5/8"X30" iron pins were set with plastic caps, "City Surveyor", as shown on the accompanying plat.



T37S, R1W, Sec. 30 BC
TL 6600 and 6700