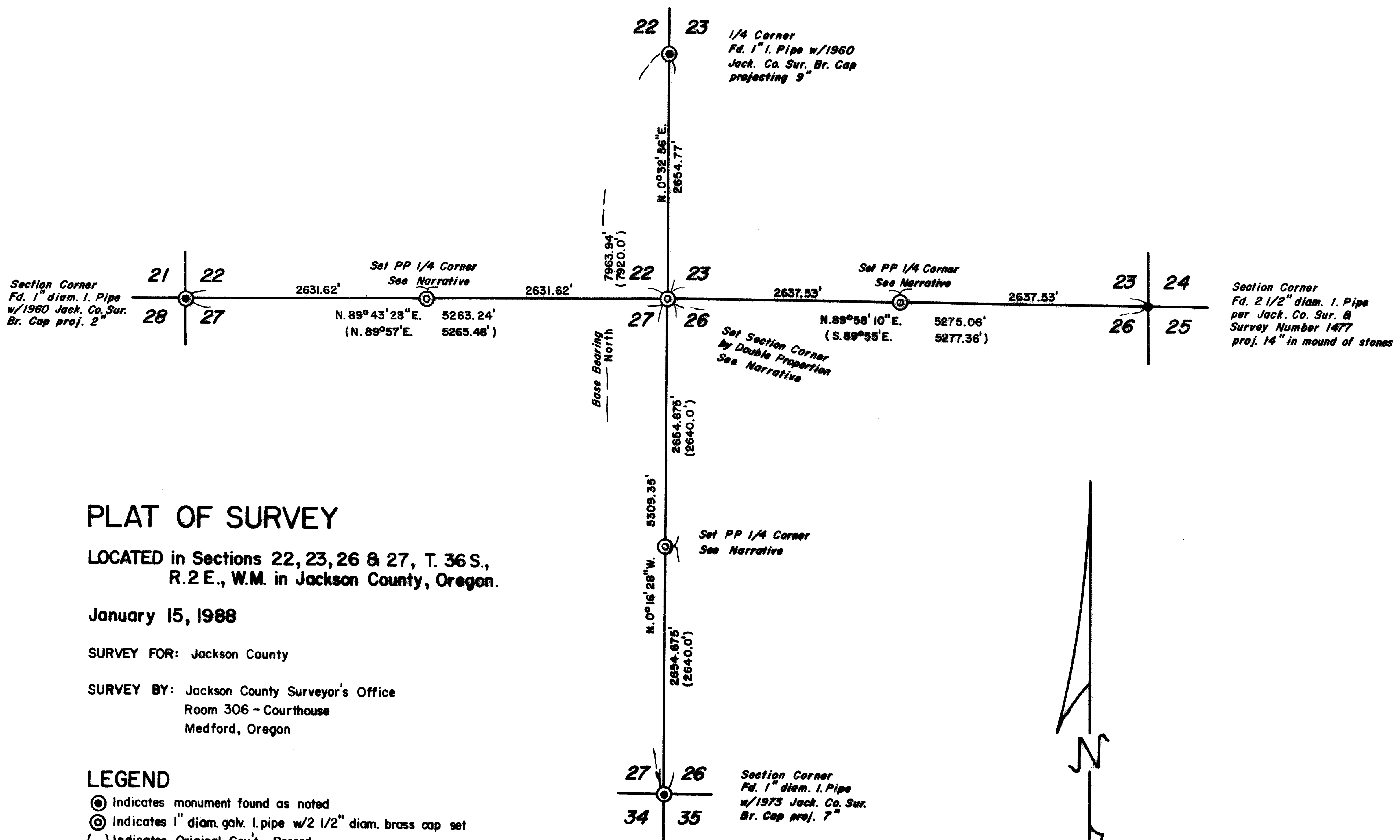


11077



PLAT OF SURVEY

LOCATED in Sections 22, 23, 26 & 27, T. 36 S.,
R. 2 E., W.M. in Jackson County, Oregon.

January 15, 1988

SURVEY FOR: Jackson County

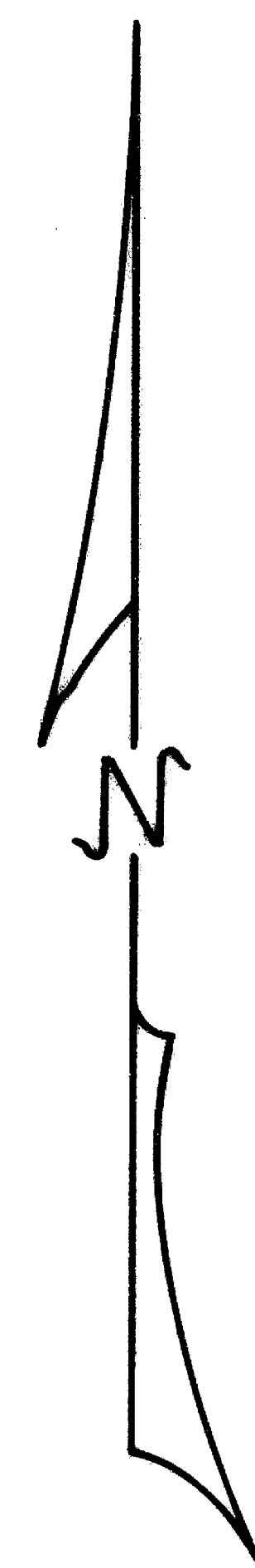
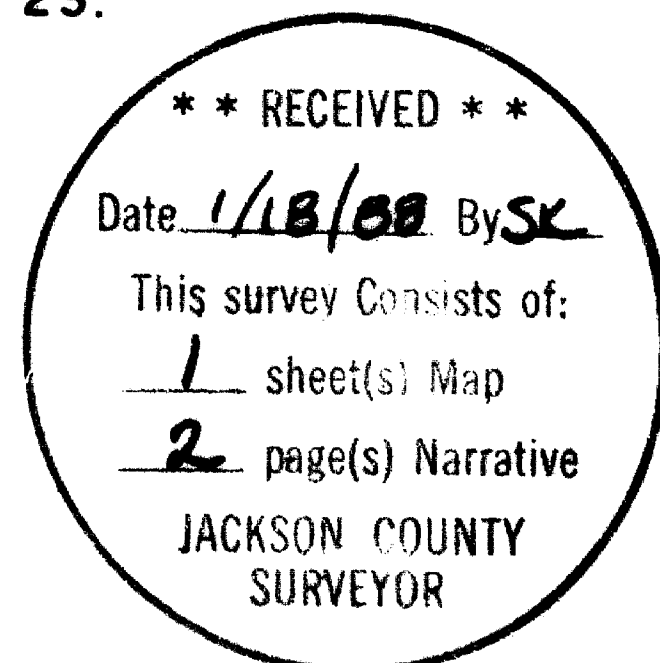
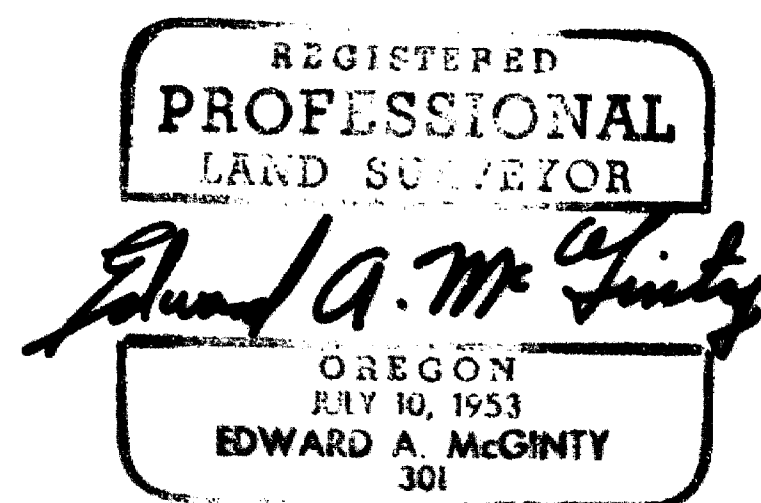
SURVEY BY: Jackson County Surveyor's Office
Room 306 - Courthouse
Medford, Oregon

LEGEND

- ⊙ Indicates monument found as noted
- ⊕ Indicates 1" diam. galv. l. pipe w/ 2 1/2" diam. brass cap set
- () Indicates Original Gov't. Record

SCALE: 1" = 1000'

BASIS OF BEARINGS: Gov't Record North between SE corner
Section 27 & 1/4 corner 22 & 23.



11077

Take new references as follows:

White Oak, 10 ins. diam., scribed "CS-BT", bears S59°24'34"W,
203.36 ft.

Cedar, 7 ins. diam. scribed "CS-BT", bears N59°24'34"W, 66.73 ft.

At the quarter corner common to Sections 22 and 27, set a 1x36 ins. galvanized iron pipe 30 ins. in the ground. In the top of said pipe, set in concrete, a 2½ ins. diam. brass cap mkd:

T36S R2E
22
¼s —
27
C.S.
1988

Take references as follows:

White Oak, 7 ins. diam., scribed "CS-BT", bears S35°54'46"E,
22.10 ft.

White Oak, 15 ins. diam., scribed "CS-BT", bears N9°14'44"W,
57.55 ft.

Corner lies on top of Easterly cut bank of a dirt road, course N10°E,
and an estimated 250 ft. S50°W from Hwy. 140, course N40°W.

At the quarter corner common to Sections 26 and 27, set a 1x36 ins. galvanized iron pipe 30 ins. in the ground in a small mound of stones. In the top of said pipe, set in concrete, a 2½ ins. diam. brass cap mkd:

T36S R2E
¼s
27|26
C.S.
1988

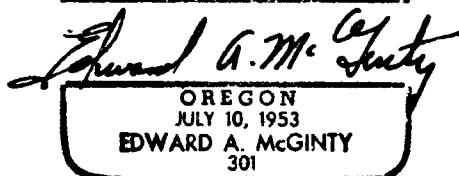
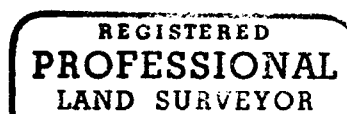
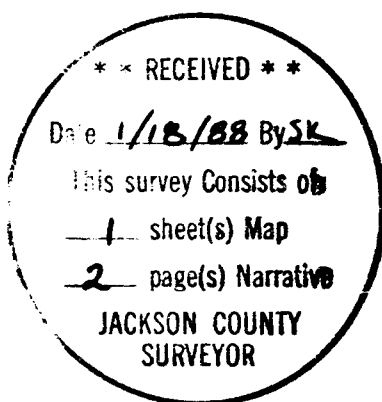
Take references as follows:

White Oak, 11 ins. diam., scribed "CS-BT", bears S37°04'27"E, 54.00 ft.
White Oak, 7 ins. diam., scribed "CS-BT", bears N4°58'27"W, 14.35 ft.

Note: All distances to bearing trees are taken to center of tree at lower blaze.

EQUIPMENT: Nikon NTD-2 Semi-Automatic Total Station.

SEE JACKSON COUNTY JOB FILE NO. 87-64.



SURVEY NARRATIVE TO COMPLY WITH CHAPTER 209.250
OREGON REVISED STATUTES

SURVEY FOR: Jackson County

SURVEY BY: Edward A. McGinty
Jackson County Surveyor
Courthouse Rm 306
Medford, OR. 97501

DATE: January 15, 1988

LOCATION: Sections 22, 23, 26 and 27, Township 36 South, Range 2 East of the Willamette Meridian in Jackson County, Oregon.

BASIS OF BEARING: Government record North between the section corner common to Sections 26, 27, 34 and 35 and the quarter corner common to Sections 22 and 23.

PURPOSE: To establish positions to search for the corner to Sections 22, 23, 26 and 27, the quarter corners to Sections 22 and 27, to Sections 26 and 27 and to Sections 23 and 26. No acceptable original evidence being found, and to preserve the traverse data, these corners were monumented at proportionate positions as shown on the accompanying plat.

PROCEDURE: Began a traverse at the Southeast corner of Section 27 and ran Northerly near the Section line, to a point near the quarter corner to Sections 26 and 27, tying possible original calls along the way. Continued Northerly at random to the quarter corner between Sections 22 and 23. Using this line as base bearing, (North), determined points at which to search for subject original corners. Aside from a scattered pile of stones near the Northeast corner of Section 27 and a possible line tree, nothing worthy of noting was found.

The traverse was then expanded East and West to tie to the Northwest corner of Section 27 and the Northeast corner of Section 26. Utilizing this data, a position was established by double proportion for the corner common to Sections 22, 23, 26 and 27, as well as positions for the quarter corners East and West. A search of these locations yielded nothing. The corners were then monumented at the proportionate positions as shown on the accompanying plat and as described as follows:

At the corner to Sections 22, 23, 26 and 27, set a 1x22 ins. galvanized iron pipe 16 ins. in the ground in a large mound of stones. In the top of said pipe, set in concrete, a 2½ ins. diam. brass cap mkd:

T36S R2E
22|23
—|—
27|26
C.S.
1988

Set references as follows:

A 5/8x24 ins. rebar with a yellow plastic cap mkd. "JACKSON CS", set flush on the northerly high bank of Little Butte Creek, bears S0°16'28"E, 1030.51 ft.

A 5/8x24 ins. rebar with a yellow plastic cap mkd. "JACKSON CS", set flush in a ring of stones, bears S0°16'28"E, 28.21 ft.

At the Quarter corner common to Sections 23 and 26, set a 1x27 ins. galvanized iron pipe 12 ins. in the ground in a large mound of stones. In the top of said pipe, set in concrete, a 2½ ins. diam. brass cap mkd:

T36S R2E
23
¼s —
26
C.S.
1988