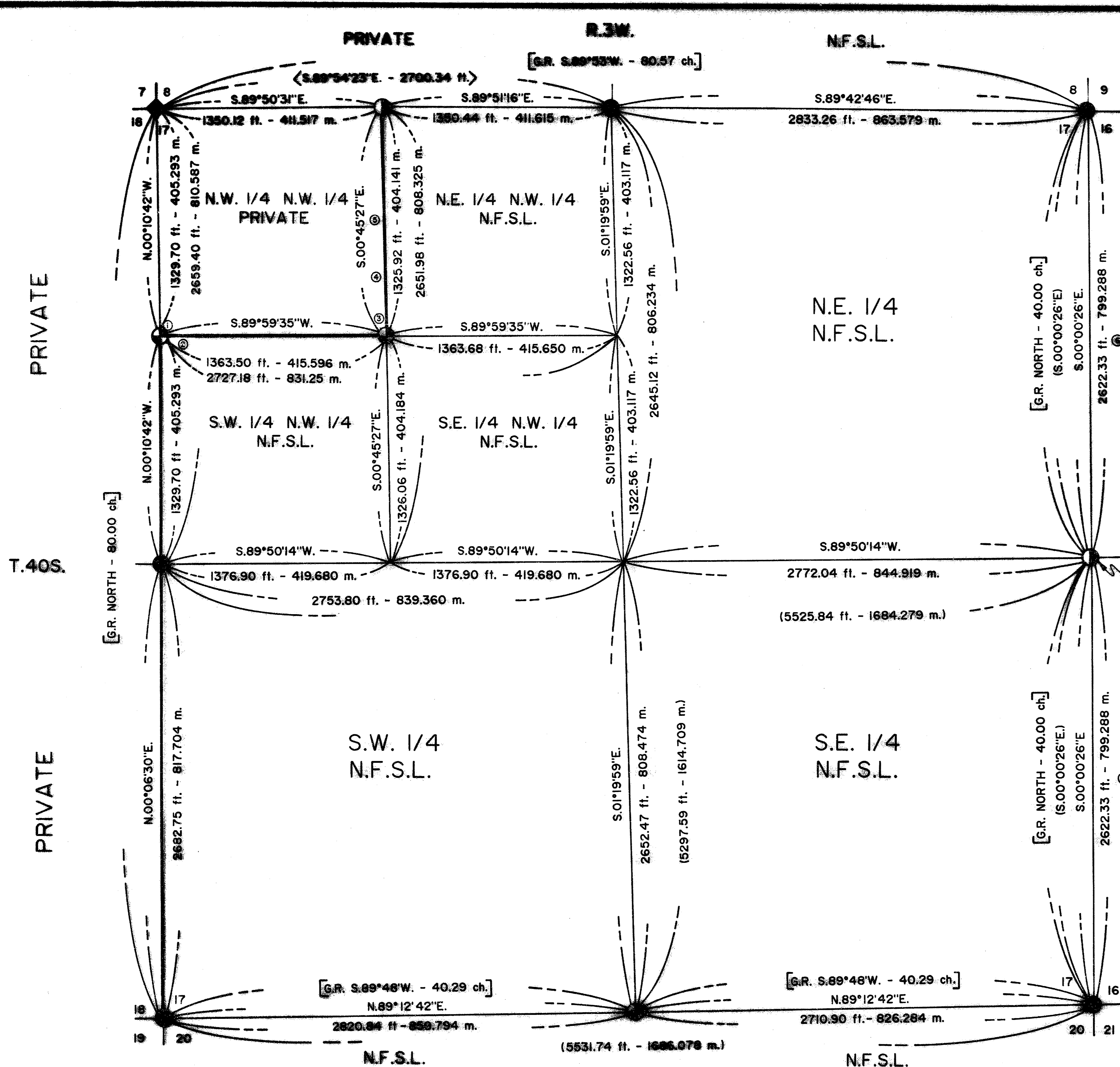
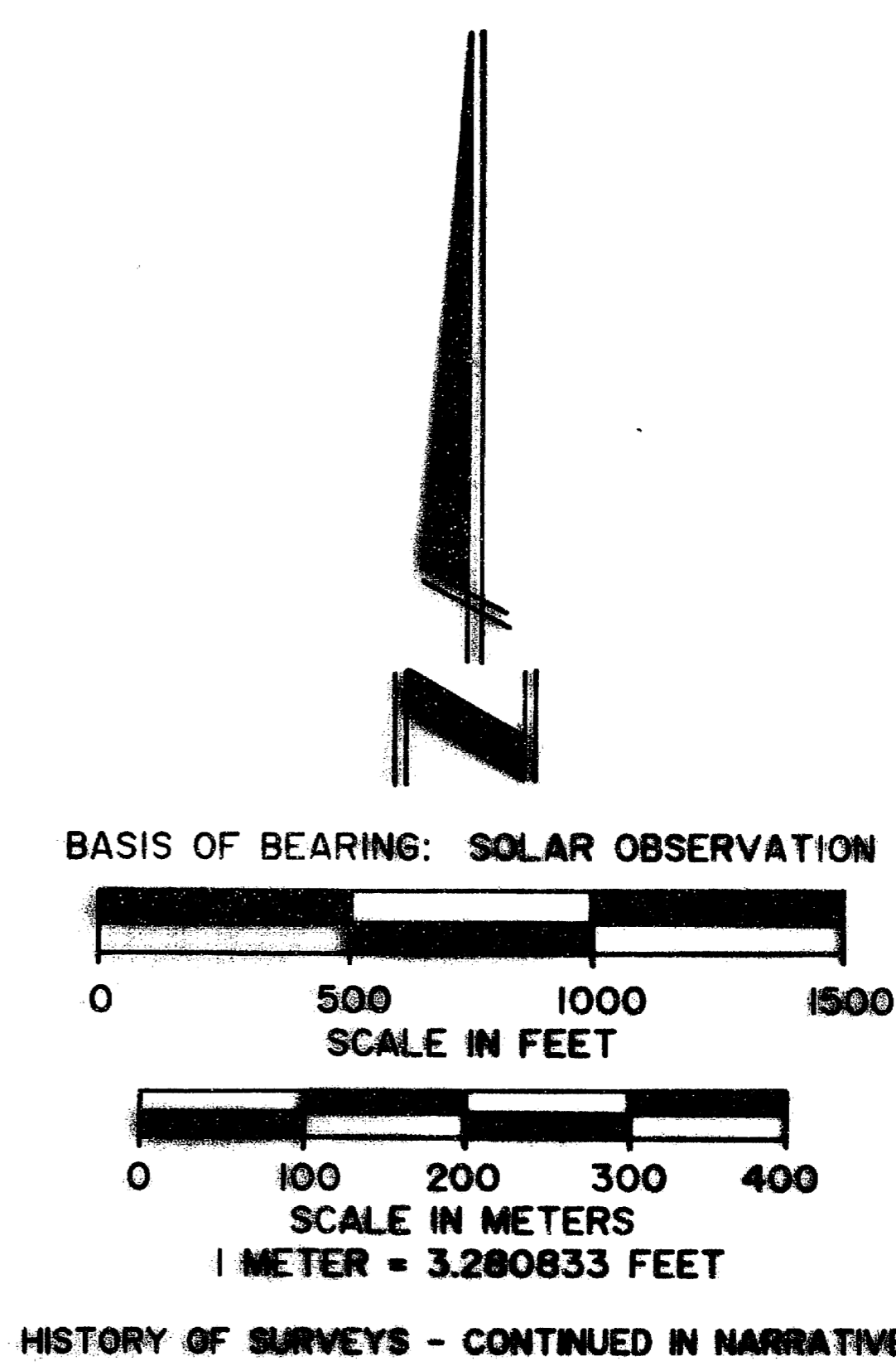


MAP OF SURVEY  
FOR  
ROGUE RIVER NATIONAL FOREST  
P.O. BOX 520  
MEDFORD, OREGON  
NOVEMBER 20, 1987



FOUND BRASS CAP MONUMENT  
SET BY HAROLD L. CENTER,  
P.L.S. NO. 1071, REF. RECORD  
SURVEY NO. 10362.



HISTORY OF SURVEYS - CONTINUED IN NARRATIVE

**CERTIFICATE OF SURVEY**

I, HAROLD L. CENTER, REGISTRATION NO. 1071, REGISTERED PROFESSIONAL LAND SURVEYOR, STATE OF OREGON, HEREBY CERTIFY THAT THIS PLAT CORRECTLY REPRESENTS A SURVEY MADE BY ME OR UNDER MY DIRECT SUPERVISION IN CONFORMANCE WITH THE LAWS OF THE STATE OF OREGON AT THE REQUEST OF THE UNITED STATES FOREST SERVICE.

- NOTES**
- ① A 2 INCH DIAMETER IRON PIPE BEARS N.00°03'00"E., 12.48 FEET FROM THE N. 1/16 CORNER FOR SECTIONS 17 & 18.
  - ② A 6 INCH WELL CASE BEARS S.66°09'26"E., 247.82 FEET FROM THE N. 1/16 CORNER FOR SECTIONS 17 & 18.
  - ③ A 1/2 INCH DIAMETER IRON PIPE BEARS N.51°16'W., 42.80 FEET DISTANCE FROM THE N.W. 1/16 CORNER SECTION 17. (PIPE IS 33.0 FEET WEST AND 28.8 FEET NORTH OF THE PROPERTY BOUNDARY)
  - ④ A 3/4 INCH DIAMETER IRON PIPE BEARS N.05°50'49"W., 359.71 FEET DISTANCE FROM THE N.W. 1/16 CORNER SECTION 17. (PIPE IS 31.9 FEET WEST OF THE PROPERTY LINE)
  - ⑤ A 1/2 INCH DIAMETER IRON PIPE BEARS S.02°05'39"W., 634.14 FEET DISTANCE FROM THE W. 1/16 CORNER SECTIONS 6 & 17. (PIPE IS 31.5 FEET WEST OF THE PROPERTY LINE)
  - ⑥ THIS IS A CORRECTION OF FEET/METER CONVERSION AS NOTED ON PLAT OF RECORD SURVEY NO. 10362.

- LEGEND**
- SPECIAL NOTES
  - FOUND BUREAU OF LAND MANAGEMENT MONUMENT
  - FOUND PRIVATE SURVEYOR BRASS CAP MONUMENT
  - MONUMENT SET THIS SURVEY
  - CALCULATED LINE FROM TRAVERSE SURVEY
  - PROPERTY BOUNDARY POSTED AND BLAZED THIS SURVEY
  - < > RECORD SURVEY NO. 8681 - P.L.S. 1679
  - N.F.S.L. NATIONAL FOREST SYSTEM LANDS
  - ( ) RECORD SURVEY NO. 10362 - P.L.S. 1071
  - ◆ B.L.M. (1964) REMONUMENTATION - UTILIZED AN OLD G.L.O. BRASS CAP

REGISTERED  
PROFESSIONAL  
LAND SURVEYOR  
*Harold L. Center*  
OREGON  
HAROLD L. CENTER  
JULY 20, 1988  
No. 1071

\*\* RECEIVED \*\*  
Date: 12-22-87 By: *SK*  
This survey consists of:  
1 sheet(s) Map  
6 page(s) Narrative  
JACKSON COUNTY  
SURVEYOR

PROJECT NO. 87-5  
U.S. DEPARTMENT OF AGRICULTURE  
FOREST SERVICE  
REGION 6 - ROGUE RIVER NATIONAL FOREST

**DEPENDENT RESURVEY  
AND  
SECTION SUBDIVISION  
SECTION 17, T.40s., R.3W., W.M.  
JACKSON COUNTY, OREGON**

REVIEWED BY: *David King* DATE: 12/14/87  
REVIEWED BY: \_\_\_\_\_ DATE: \_\_\_\_\_

and mark the following accessories:

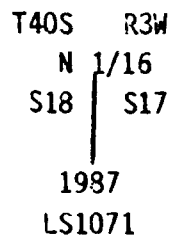
A 13-inch diameter fir bears S.40°46'E., 21.76 feet distance, scribed NW 1/16 S17 LS1071 BT.

A 16-inch diameter oak bears S.67°33'W, 58.20 feet distance, scribed X BT.

A 1/2-inch diameter iron pipe bears N.51°16'W., 42.80 feet distance. This pipe not of record.

The north one-sixteenth corner for Sections 17 and 18, Township 40 South, Range 3 West, Willamete Meridian.

At the corner point, I set a 2 1/2-inch diameter iron post with a 2 1/2-inch diameter brass cap monument marked:



and mark the following accessories:

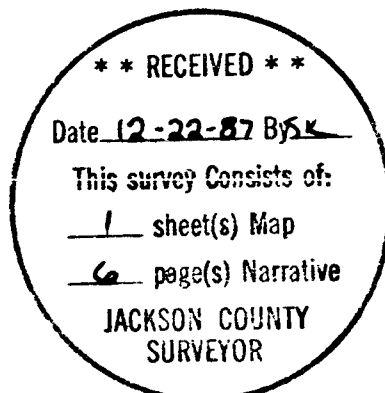
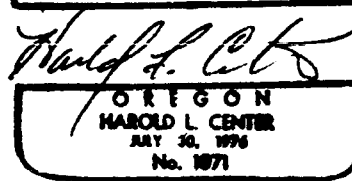
A 22-inch diameter pine bears S.03°30'E., 32.74 feet distance, scribed N 1/16 S17 LS1071 BT.

A 12-inch diameter oak bears N.73°20'W., 4.15 feet distance, scribed N 1/16 S18 LS1071 BT.

A 2-inch diameter iron pipe bears N.80°03'E., 12.49 feet distance. This pipe is not of record.

November 20, 1987

HAROLD L CENTER  
Registered Professional Land Surveyor  
Oregon Certificate No. 1071



and the following accessories:

A 23-inch diameter oak bears N.40°53'W., 39.35 feet distance, with a partly healed blaze and decayed face.

An 11-inch diameter oak bears N.23°56'E., 64.62 feet distance, with a healed blaze.

A 15-inch diameter pine bears N.87°07'E., 30.70 feet distance, with fragmentary scribe visible on a partly healed blaze. NOTE: This tree has a sign attached which says "Mule Mt. Trail No. 919."

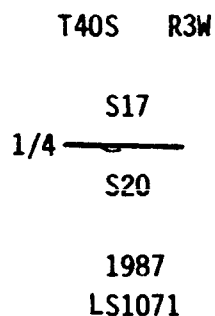
A 33-inch diameter oak bears S.39°45'E., 60.78 feet distance, with a healed blaze.

A 14-inch diameter pine bears S.60°33'W., 10.20 feet distance, with no marks visible on a pitched-over face.

CORNERS ESTABLISHED OR REESTABLISHED THIS SURVEY

The one-quarter corner for Sections 17 and 20, Township 40 South, Range 3 West, Willamette Meridian.

At the corner point, I set a 2 1/2-inch diameter iron post with a 2 1/2-inch diameter brass cap monument marked:



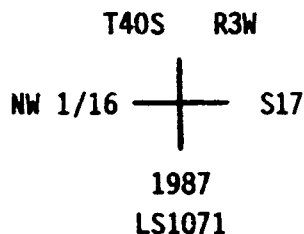
and mark the following accessories:

A 23-inch diameter pine bears N.77°28'E., 65.50 feet distance, scribed 1/4 S17 LS1071 BT.

An 11-inch diameter oak bears S.57°11'E., 42.78 feet distance, scribed 1/4 S20 LS1071 BT.

The northwest one-sixteenth corner for Section 17, Township 40 South, Range 3 West, Willamette Meridian.

At the corner point, I set a 2 1/2-inch iron post with a 2 1/2-inch diameter brass cap monument marked:



and the following accessories:

A 23-inch diameter oak bears N.40°53'W., 39.35 feet distance, with a partly healed blaze and decayed face.

An 11-inch diameter oak bears N.23°56'E., 64.62 feet distance, with a healed blaze.

A 15-inch diameter pine bears N.87°07'E., 30.70 feet distance, with fragmentary scribe visible on a partly healed blaze. NOTE: This tree has a sign attached which says "Mule Mt. Trail No. 919."

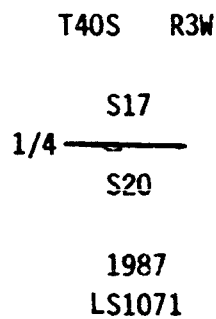
A 33-inch diameter oak bears S.39°45'E., 60.78 feet distance, with a healed blaze.

A 14-inch diameter pine bears S.60°33'W., 10.20 feet distance, with no marks visible on a pitched-over face.

CORNERS ESTABLISHED OR REESTABLISHED THIS SURVEY

The one-quarter corner for Sections 17 and 20, Township 40 South, Range 3 West, Willamette Meridian.

At the corner point, I set a 2 1/2-inch diameter iron post with a 2 1/2-inch diameter brass cap monument marked:



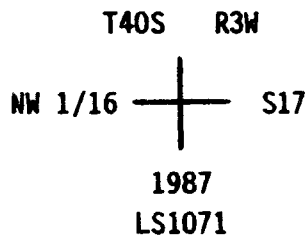
and mark the following accessories:

A 23-inch diameter pine bears N.77°28'E., 65.50 feet distance, scribed 1/4 S17 LS1071 BT.

An 11-inch diameter oak bears S.57°11'E., 42.78 feet distance, scribed 1/4 S20 LS1071 BT.

The northwest one-sixteenth corner for Section 17, Township 40 South, Range 3 West, Willamette Meridian.

At the corner point, I set a 2 1/2-inch iron post with a 2 1/2-inch diameter brass cap monument marked:



At the corner point, I found a 3-inch diameter brass cap monument marked:

U.S. GENERAL LAND OFFICE  
-SURVEY-

T40S	R3W
S7	S8
S18	S17

1964

NOTE: This corner lies just below the sod in the front yard of a private landowner, north of Applegate road. Note that the BLM used an old GLO monument in 1964.

I found the following accessories:

A 57-inch diameter fir bears S.39°35'W., 87.59 feet distance, with bark scribe T40SR3WS18 visible.

A 36-inch diameter fir bears N.81°12'W., 200.25 feet distance, with a healed blaze.

A 46-inch diameter fir bears S.89°21'E., 37.60 feet distance.

A 25-inch diameter oak bears S.56°06'E., 15.20 feet distance.

The one-quarter corner for Sections 17 and 18, Township 40 S., R. 3 W., Willamette Meridian.

At the corner point, I found a Bureau of Land Management brass cap monument protruding 3 inches above ground marked:

U.S. DEPT. OF INTERIOR  
UNLAWFUL TO DISTURB

1	
S18	S17
T40S	R3W

1964

BUREAU OF LAND MANAGEMENT  
CADASTRAL SURVEYS

NOTE: Cap marked as shown (missing /4).

and the following accessories:

A 9-inch diameter oak bears N.09°06'W., 7.00 feet distance, with an axed face - no marks visible.

A 10-inch diameter fir bears N.00°28'W., 13.45 feet distance, with a healed blaze.

A 5-inch diameter fir bears S.30°41'E., 10.00 feet distance, with fragmentary scribe visible. This tree is now dead and down.

A 27-inch diameter fir bears S.26°23'E., 28.05 feet distance, with a healed upper blaze and bark scribe "BT" visible.

The west one-sixteenth corner for Section 8 and 17, Township 40 South, Range 3 West, Willamette Meridian.

At the corner point, I found a 2 1/2-inch diameter brass cap monument protruding 4 inches above ground marked:

T40S R3W  
W 1/16  $\frac{S8}{S17}$

LS1679  
1980

and the following accessories:

A 10-inch diameter pine bears S.30°58'E., 21.03 feet distance, with scribe marks visible on a pitched-over face.

An 11-inch diameter pine bears N.02°23'W., 29.79 feet distance, with scribing W 1/16 S8 BT visible on a partly-healed blaze.

The section corner for Sections 7, 8, 17 and 18, Township 40 South, Range 3 West, Willamette Meridian.

With all controlling corners established or verified, a series of closed traverses were run, tying to each controlling corner. The subdivision of the section was computed and lines were then established by offsets from traverse points. The property boundaries were marked with 6-foot aluminum posts with National Forest boundary signs attached. Trees were blazed along the property line and painted with red timber-marking paint.

Equipment utilized throughout this survey include Wild T-2 Theolodite and Sokkisha Red 2-L electronic distance meter.

CORNERS ACCEPTED FOR CONTROL

Section corner for Sections 8, 9, 16 and 17, Township 40 South, Range 3 West, Willamette Meridian, Jackson County, Oregon.

Section corner for Sections 16, 17, 20 and 21, Township 40 South, Range 3 West, Willamette Meridian, Jackson county, Oregon.

The one-quarter corner for Sections 16 and 17, Township 40 South, Range 3 West, Willamette Meridian, Jackson County, Oregon.

The section corner for Sections 17, 18, 19 and 20, Township 40 South, Range 3 West, Willamette Meridian, Jackson County, Oregon.

NOTE: These four corners were previously described in other surveys of record and will not be described in this narrative.

The one-quarter corner for Sections 8 and 17, Township 40 South, Range 3 West, Willamette Meridian.

At the corner point, I found a Bureau of Land Management brass cap monument protruding 9 inches above ground marked:

U.S. DEPT. OF INTERIOR  
UNLAWFUL TO DISTURB

T40S R3W  
S8  
1/4 S17

1964  
BUREAU OF LAND MANAGEMENT  
CADASTRAL SURVEYS



SURVEY NARRATIVE TO COMPLY WITH  
PARAGRAPH 209.250 OREGON REVISED STATUTES

SURVEY FOR: Rogue River National Forest  
P. O. Box 520  
Medford, OR 97501

LOCATION : Section 17, Township 40 South, Range 3 West, Willamette  
Meridian, Jackson County, Oregon

BASE OF BEARING : Solar observations from Record Survey No. 10362.

PURPOSE : To monument property corners, and mark and post property boundary  
lines separating National Forest and private lands within Section  
17.

HISTORY OF SURVEYS : Original surveys of the township were performed by Samuel W.  
Lackland, Deputy Surveyor, under Contract No. 429, dated  
January 1882.

Section 8 was resurveyed by Kurt C. Weaver, P.L.S. 1679 during  
Record Survey No. 8681 dated October, 1980.

Section 16 was resurveyed by Harold L. Center P.L.S. No. 1071  
during Record Survey No. 10362, dated August 5, 1985.

Original corner points used for control were remonumented from  
evidence by the Bureau of Land Management Division of Cadastral  
Surveys.

No other surveys are of record.

PROCEDURE: Prior to commencement of this survey, extensive corner search was  
performed within the area. Search areas were established along  
the south boundary of Section 17, utilizing the topographic calls  
as reported by Deputy Surveyor Lackland. Neither evidence of the  
original corner point for the South  $\frac{1}{4}$  to Section 17, or evidence  
of original blazes along the line, could be recovered. After ana-  
lyzing all of the topographic data and being unable to recover  
evidence of the original corner, I set the South  $\frac{1}{4}$  corner for  
Section 17 by proportionate measurement.

All other controlling corners were recovered and verified. Local  
corners (not of record) were found in the Northwest  $\frac{1}{4}$  of the  
Northwest  $\frac{1}{4}$  of Section 17 as indicated on the attached map.