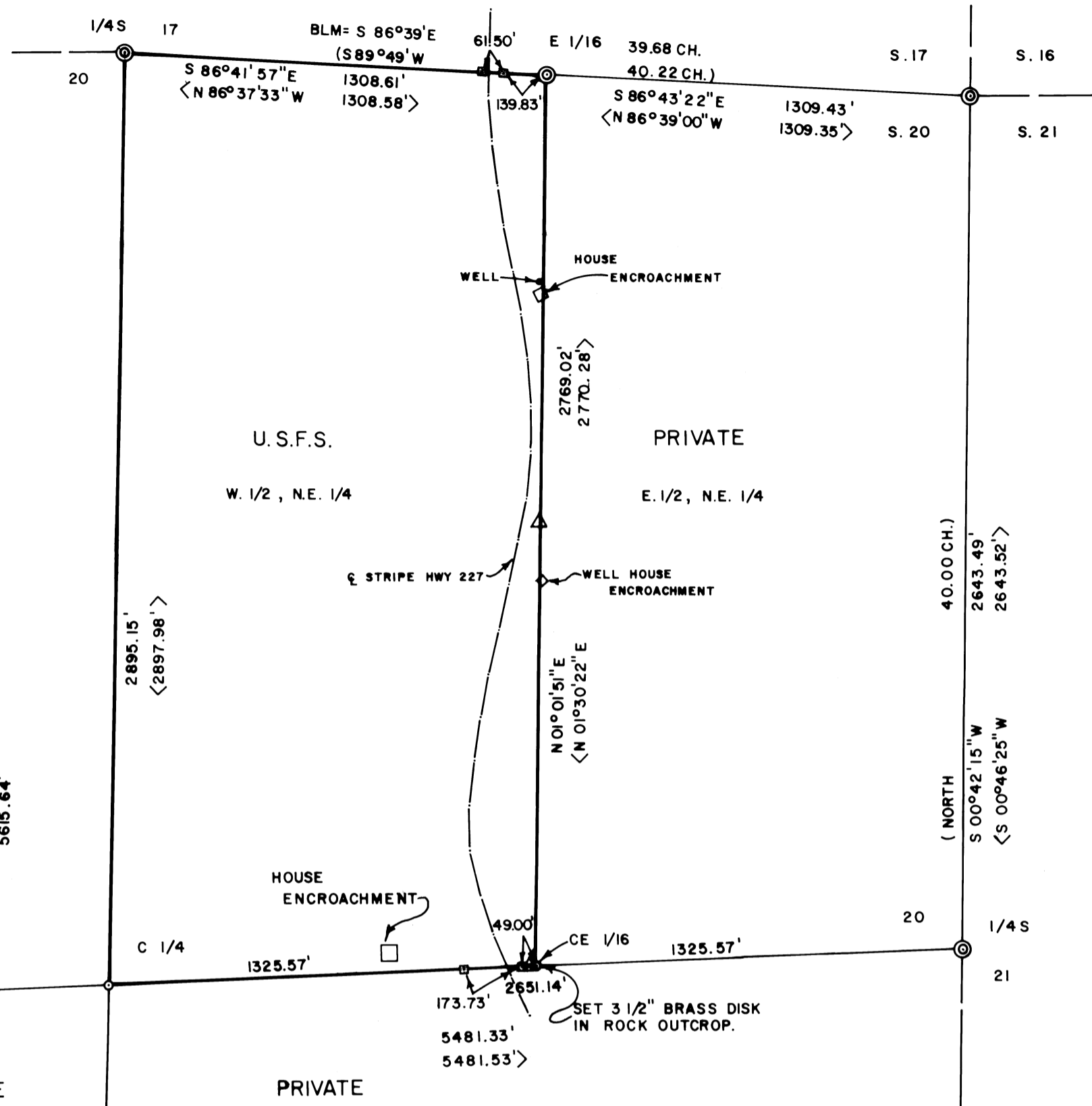


PRIVATE



HISTORY OF SURVEY:
 SECTION 20 WAS SURVEYED BY N. FORD IN 1855, & RESURVEYED BY THE B.L.M. IN 1973, WHEN THE W. 1/4 & S. 1/4 WERE SET BY PROPORTIONATE MEASUREMENT. IN 1980 THE N.E. 1/4 WAS SUBDIVIDED BY L.S. 539 USING THE B.L.M. CORNERS. THE JACKSON COUNTY SURVEYOR'S OFFICE LOCATED EVIDENCE OF THE ORIGINAL S. 1/4 IN 1981, CHANGING THE POSITION OF THE CORNERS AS SET BY L.S. 539 DURING SURVEY NO. 8623.

BASIS OF BEARINGS:
 SOLAR OBSERVATION

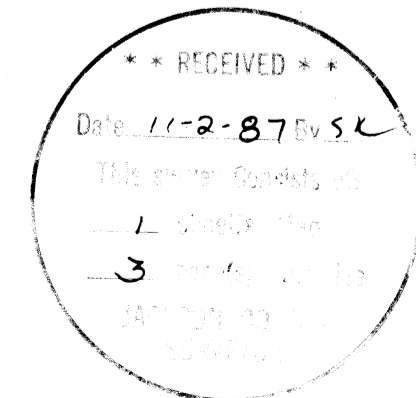
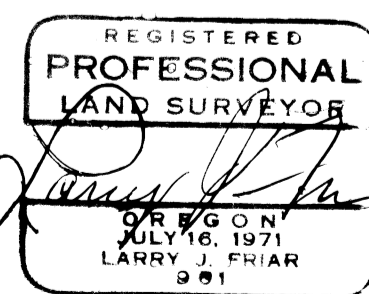
- LEGEND:**
- ⊙ = FOUND STANDARD B.L.M. MONUMENT.
 - ⊙ = FOUND STANDARD CO. SURVEYOR'S MONUMENT.
 - = SET 2" x 30" IRON PIPE WITH BRASS CAP.
 - = PROPERTY LINE MARKED & POSTED UNDER THIS CONTRACT.
 - () = GOVERNMENT RECORD.
 - < > = RECORD INFORMATION FROM SURVEY NO. 8623. SEE NARRATIVE.
 - BLM = RECORD INFORMATION FROM B.L.M. 1973 SURVEY.
 - △ = FOUND MONUMENT SET DURING SURVEY NO. 8623 (SEE NARRATIVE).
 - = SET 5/8" x 30" REBAR W/ ALUM. CAP, MARKED LINE MONUMENT.

PROJECT NAME: TRAIL CADASTRAL SURVEY.
 CONTRACT NO. 43-04N7-7-793.
 FIELD BOOKS 1 & 2.

ACCEPTED AND APPROVED FOR THE U.S. FOREST SERVICE.

Larry J. Friar
 C.O.R. 11/2/87
 DATE

I, LARRY J. FRIAR, A REGISTERED LAND SURVEYOR IN THE STATE OF OREGON, HEREBY CERTIFY THAT THIS PLAT AND THE NOTES HEREON ARE A CORRECT REPRESENTATION OF A SURVEY MADE BY ME OR UNDER MY DIRECTION IN OCTOBER, 1987, FOR THE U.S. FOREST SERVICE, IN ACCORDANCE WITH THE STATUTES OF THE STATE OF OREGON AND WITH THE ARTICLES OF MY CONTRACT.



PLAT OF SURVEY FOR ROGUE RIVER NATIONAL FOREST

SECTION 20
 T. 33 S., R. 1 W., W.M.
 JACKSON CO. SCALE: 1" = 400'
 OREGON DATE: OCT., 1987

PREPARED BY: L.J. FRIAR AND ASSOC.
 MEDFORD, OREGON

Survey No. 11027

Survey Narrative To Comply With O.R.S. 209.250

Survey For: Rogue River National Forest
P.O. Box 520
Medford, Oregon 97501

Location: Section 20, Township 33 South, Range 1 West,
Willamette Meridian, Jackson County, Oregon.

Purpose: To set the center one-quarter corner, center-east one-sixteenth corner, line monuments on the North line and East-West centerline of Section 20, locate the centerline (center of paved surface) of State Highway 227, and mark property lines as shown on the attached map.

Procedure: Closed traverses were run to existing section, one-quarter and one-sixteenth corners. A solar observation was taken on the traverse on Highway 227 at approximately the East-West centerline of Section 20, and was used as the basis of bearings.

At the one-quarter corner common to sections 17 and 20, I found a B.L.M. brass cap, properly marked, in a rock mound from which:

- A 26" cedar bears N.31 1/2°E., 49.5 feet; scribe visible.
- A 20" fir bears N.46 1/4°E., 42.2 feet; healed blaze.
- An 18" fir stub bears S.31 3/4°W., 18.9 feet; scribe visible.
- A 19" fir bears S.42°W., 80.5 feet; healed blaze.

At the East one-sixteenth corner common to sections 17 and 20, I found a B.L.M. brass cap, properly marked, in a rock mound from which:

- A 10" oak bears N.34°E., 27.4 feet; scribe visible.
- A 16" pine snag bears S.27°W., 30.7 feet; scribe visible.
- A 10" oak 1 scribed E1/16S20BT bears S.13 1/2°E., 25.1 feet, with a brass tag stamped LS 961 nailed to "BT".

At the corner common to sections 19, 17, 20 & 21, I found a B.L.M. brass cap, properly marked, in a rock mound from which:

- A 15" oak bears N.04 1/4°E., 32.0 feet; healed blaze.
- An 18" oak snag bears N.85°E., 27.1 feet; rotted out face. (CBT)
- An oak snag bears S.60 3/4°E., 40.9 feet; axe work (OBT).

A 22" oak bears S.24*E.,79.3 feet;healed blaze.
 A 14" pine bears S.64 3/4*W.,43.5 feet;healed blaze.
 A 12" oak bears N.46*W.,21.6 feet;healed blaze.

At the one-quarter corner common to sections 19 and 20, I found a B.L.M. brass cap, properly marked, in a rock mound from which:

A 24" pine(dead & down) bears N.87 1/4*E.,38.4 feet;scribe visible.
 A 16" pine(dead) bears N.11*W.,154.8 feet;scribe visible.
 A 10" oak I scribed 1/4S20BT bears N.49*E.,47.6 feet, with a brass tag stamped LS 961 nailed to "BT".
 A 12" pine I scribed 1/4S19BT bears N.15 1/2*W.,44.3 feet, with a brass tag stamped LS 961 nailed to "BT".

At the center one-quarter corner of section 20, I set a 2 1/2" x 30" G.I.P. with a 2 1/2" brass cap, properly marked, 25" deep, from which:

A 7" fir bears N.44 1/2*E.,22.8 feet.
 An 8" fir bears S.32 3/4*E.,24.8 feet.
 BT's scribed C1/4S20BT with a brass tag stamped LS 961 nailed to "BT".

At the center-east one-sixteenth corner of section 20, I set a 3" brass disk, properly marked, in a rock outcrop from which:

A 16" fir bears S.32 1/2*E.,33.9 feet.
 A 15" fir bears S.75 1/2*W.,40.6 feet.
 BT's scribed CE1/16S20BT with a brass tag stamped LS 961 nailed to "BT".
 A 1" rebar set during R.S.# 8623 bears S.86*40'36"W.,19.42 feet.
 The position of the NE 1/16 by same survey bears N.00*37'22"E.,1384.03 feet.(Set from BT's.)

At the one-quarter corner common to sections 20 and 21, I found a B.L.M. brass cap, properly marked, in a rock mound from which:

A pine stump bears N.30*E.,10.0 feet;scribe visible.(OBT)
 An 8" pine bears S.86 1/2*E.,36.3 feet;scribe visible.
 A 13" oak bears S.82 1/2*W.,27.8 feet;healed blaze.(OBT)
 A 15" pine(dead & down) bears N.83 1/2*W.,75.2 feet;scribe visible.

At the one-quarter corner common to sections 20 and 29, I found a Jackson County Surveyor's Office brass cap, properly marked, in a rock mound from which:

A 17" pine bears S.73 1/2*E.,27.3 feet;scribe visible.
 A 10" pine bears N.00 3/4*W.,36.5 feet;scribe visible.

See Jackson County Project File No. 81-11.

At the corner common to sections 20,21,28 & 29, I found a B.L.M. brass cap, properly marked, with a 2 1/2" G.I.P. along side, from which:

A 12" oak bears N.32*E.,24.4 feet;open face.(OBT)
 A 9" oak bears N.47*E.,69.3 feet;healed blaze.

An 8" oak bears S.02*E., 44.0 feet; healed blaze.
 A 13" oak bears S.69*W., 3.3 feet; healed blaze.
 A 6" oak bears N.35*W., 48.8 feet; healed blaze.

At the corner common to sections 19, 20, 29 and 30, I found a B.L.M. brass cap, properly marked, exposed 5", from which:

A 22" fir bears N.24 1/4*E., 8.2 feet; (OBT).
 A 12" fir bears N.72 1/2*E., 62.4 feet; healed blaze.
 A 24" fir bears S.61 1/2*E., 32.1 feet; scribe visible.
 A 26" fir bears S.23 1/2*E., 16.8 feet; (OBT).
 A black oak stub bears S.32 1/4*W., 17.8 feet; OBT.
 A 22" fir (dead) bears S.39 1/4*W., 62.7 feet; scribe visible.
 A 16" fir bears N.49 1/4*W., 38.7 feet; healed blaze.
 A 5" fir I scribed XBT bears S.46 3/4*W., 40.8 feet, with a brass tag stamped LS 961 nailed to "BT".

In 1973, the B.L.M. resurveyed and remonumented the corners around section 20. The West one-quarter and South one-quarter corners were proportioned in. These corners were used in Survey No. 8623 to subdivide the section. In 1981, the County Surveyor's Office located the original position of the South one-quarter, thus changing the subdivision of section 20, and the positions of the center-east and northeast one-sixteenth corners set during Survey No. 8623. A Topcon GTS 2B EDM and Theodolite was used for the control traverse and all ties to corners and accessories. A 200' steel tape and hand compass were used to pull offsets from the posting traverses to true line.

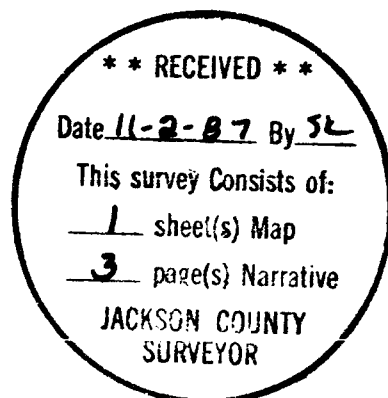
On the North and South line of the U.S. property, line monuments were set on the east and west sides, above the top of cut and below the toe of fill, of Highway 227 for future use to control the Right of Way. The monument on the west side of the highway on the south line was set on the west side of Trail Creek due to the fact the toe of fill fell below the high water mark of Trail Creek.

The symbol * represents degrees and OBT represents Original Bearing Tree set by N. Ford during the original survey in 1855.

Date: September-October, 1987

Bearing Basis: Solar Observation

T33S R1W S20 TL1900



Larry J. Friar
 L.J. Friar & Assoc.
 717 West 10th
 Medford, OR 97501

