

MAP OF SURVEY
FOR
ROGUE RIVER NATIONAL FOREST
P.O. BOX 520
MEDFORD, OREGON
SEPTEMBER 15, 1987

HISTORY OF SURVEYS

THE ORIGINAL EXTERIOR BOUNDARY AND SUBDIVISION OF TOWNSHIP 41 SOUTH, RANGE 4 WEST, W.M., WAS SURVEYED BY SAMUEL W. LACKLAND UNDER CONTRACT NO. 429 DATED JANUARY 5, 1882.

THE ORIGINAL OREGON-CALIFORNIA STATE LINE, BETWEEN MILEPOSTS 156 AND 159, WAS SURVEYED BY DANIEL MAJORS IN 1869. FRED W. RODOLF RETRACED THE STATE LINE IN THIS AREA AND FOUND AND REMONUMENTED THE ORIGINAL 156 M.P., 157 M.30 CH., 158 1/8 M.P., AND THE 159 M.P. UNDER GROUP NO. 18 DATED FEBRUARY 15, 1915. DURING THIS RETRACEMENT, DEPUTY RODOLF DISCOVERED THAT DEPUTY LACKLAND HAD REPORTED FICTITIOUS CLOSINGS TO A FRAUDULENT STATE LINE WHEN HE SURVEYED TOWNSHIP 41 SOUTH, RANGE 4 WEST, W.M., IN 1882. DEPUTY RODOLF THEN CONDUCTED A RESURVEY OF THE SOUTH BOUNDARY OF SECTION 12, AND THE EAST AND WEST BOUNDARIES OF SECTION 13 AS THEY CLOSE UPON THE RECOVERED ORIGINAL OREGON-CALIFORNIA STATE LINE, AND ESTABLISHED MONUMENTS AS INDICATED ON THIS PLAT AND THE ATTACHED SURVEY NARRATIVE.

THE BUREAU OF LAND MANAGEMENT CADASTRAL SURVEYOR, R. AANRUD, REMONUMENTED THE NORTH ONE-QUARTER CORNER, NORTHEAST SECTION CORNER AND EAST ONE-QUARTER CORNER FOR SECTION 12 FROM ORIGINAL EVIDENCE IN 1967.

THE NORTHWEST SECTION CORNER FOR SECTION 12 WAS REMONUMENTED FROM ORIGINAL EVIDENCE BY P.L.S. 1071 DURING RECORD SURVEY NO. 10696 DATED AUGUST 27, 1966.

NO OTHER SURVEYS ARE OF RECORD.

CERTIFICATE OF SURVEY

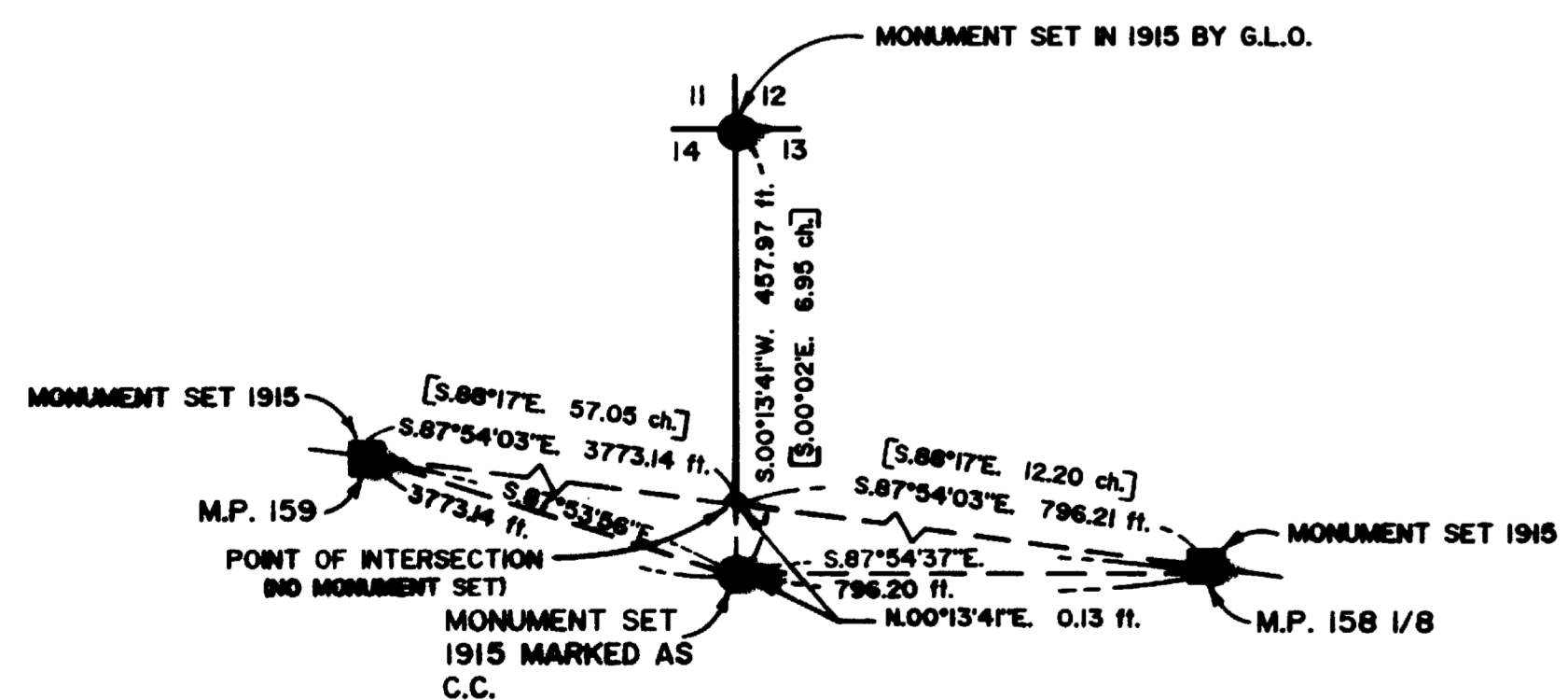
I, HAROLD L. CENTER, REGISTRATION NO. 1071 REGISTERED PROFESSIONAL LAND SURVEYOR, STATE OF OREGON, HEREBY CERTIFY THAT THIS MAP CORRECTLY REPRESENTS A SURVEY MADE BY ME OR UNDER MY DIRECTION IN CONFORMANCE WITH LAWS OF THE STATE OF OREGON, AT THE REQUEST OF THE U.S. FOREST SERVICE.



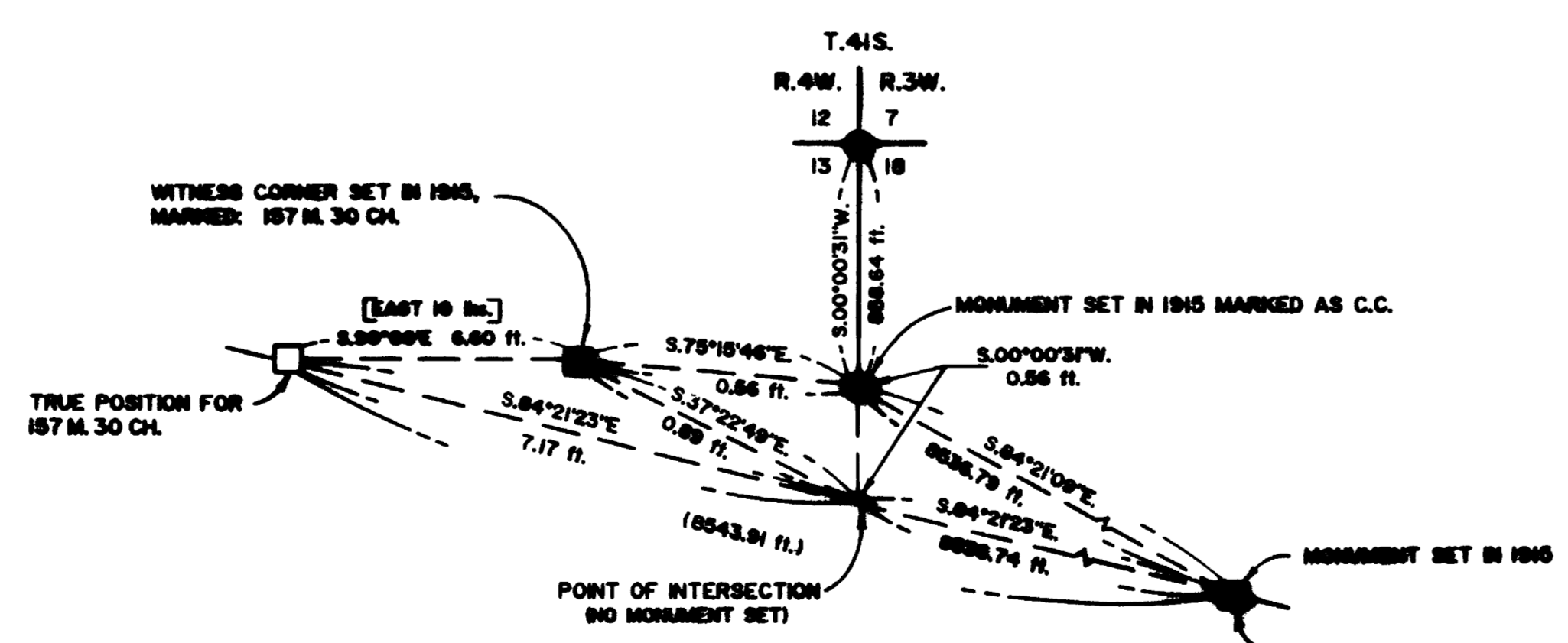
LEGEND

- B.L.M. BRASS CAP MONUMENT SET FROM ORIGINAL EVIDENCE, 1967
- MONUMENT SET FROM ORIGINAL EVIDENCE BY L.S. 1071 - R.S. NO. 10696
- BRASS CAP MONUMENT ESTABLISHED THIS SURVEY
- CALIFORNIA-OREGON STATE LINE BRASS CAP MONUMENT SET BY RODOLF 1915 - G.L.O.
- BRASS CAP MONUMENT SET BY G.L.O. - RODOLF 1915
- TRUE POSITION FOR 157 MILE 30 CHAIN CORNER - NO MONUMENT SET
- CALCULATED POINT - NO MONUMENT SET
- [] GOVERNMENT RECORD - F.W. RODOLF 1885
- < > GOVERNMENT RECORD - S. LACKLAND 1882
- POSTED AND BLAZED PROPERTY BOUNDARY
- CALCULATED LINE FROM TRANSVERSE SURVEY
- N.F.S.L. NATIONAL FOREST SYSTEM LANDS
- U.S.D.I./B.L.M. UNITED STATES DEPARTMENT OF INTERIOR/BUREAU OF LAND MANAGEMENT

RECEIVED
Date: 9/15/87
This survey consists of:
1 sheet(s) Map
11 page(s) Narrative
JACKSON COUNTY SURVEYOR



DETAIL "A"
(NOT TO SCALE)



DETAIL "B"
(NOT TO SCALE)

PROJECT NO. 87-23

U.S. DEPARTMENT OF AGRICULTURE
FOREST SERVICE
REGION 6 - ROGUE RIVER NATIONAL FOREST

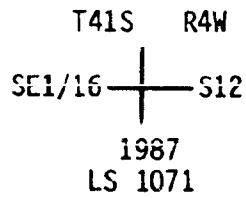
**DEPENDENT RESURVEY
AND
SECTION SUBDIVISION**

SECTION 12, T.41S., R.4W., W.M.
JACKSON COUNTY, OREGON

REVIEWED BY: [Signature] DATE: 9/15/87
REVIEWED BY: [Signature] DATE: 9/15/87

The southeast one-sixteenth corner for Section 12, Township 41 South, Range 4 West, Willamette Meridian.

At the corner point, I set a 2½-inch diameter iron post 5 inches in the ground, with a 2½-inch diameter brass cap attached, marked:



I built a mound of stone around iron post and marked the following accessories:

A basalt stone, 5½ ft. x 2½ ft. x 2½ ft., bears N.56°16'W., 4.57 feet distance, with chisel marks BXO.

A 10-inch diameter pine bears N.85°29'E., 109.37 feet distance, scribed SE 1/16 S12 LS 1071 BT.

September 15, 1987

HAROLD L. CENTER
Registered Professional Land Surveyor
Oregon Certificate No. 1071

REGISTERED
PROFESSIONAL
LAND SURVEYOR



OREGON
HAROLD L. CENTER
JULY 30, 1976
No. 1071

** RECEIVED **
Date 10/28/87 By SK
This survey consists of:
1 sheet(s) Map
11 page(s) Narrative
JACKSON COUNTY
SURVEYOR

The center-west one-sixteenth corner for Section 12, Township 41 South, Range 4 West, Willamette Meridian.

At the corner point, I set a 2 1/2-inch diameter iron post 26 inches in the ground, with a 2 1/2-inch diameter brass cap attached, marked:

T41S R4W
W 1/16
C ————— C
S12
1987
LS 1071

and marked the following accessories:

A 15-inch diameter pine bears S.65°00'W., 41.68 feet distance, scribed CW 1/16S12 LS1071 BT.

A 7-inch diameter black oak bears S.40°57'E., 34.54 feet distance, scribed X BT.

The southwest one-sixteenth corner for Section 12, Township 41 South, Range 4 West, Willamette Meridian.

At the corner point, I set a 2 1/2-inch diameter iron post 26 inches in the ground, with a 2 1/2-inch diameter brass cap attached, marked:

T41S R4W
SW1/16 ——— S12
1987
LS 1071

and mark the following accessories:

A 29-inch diameter fir bears N.20°37'E., 4.77 feet distance, scribed SW 1/16 S12 LS 1071 BT.

A 22-inch diameter fir bears S.56°49'E., 28.86 feet distance, scribed X BT.

The center-south one-sixteenth corner for Section 12, Township 41 South, Range 4 West, Willamette Meridian.

At the corner point, I set a 2 1/2-inch diameter iron post 25 inches in the ground, with a 2 1/2-inch diameter brass cap attached, marked:

T41S R4W
C
S1/16 ——— S12
C
1987
LS 1071

and marked the following accessories:

A 24-inch diameter fir bears N.81°17'W., 6.90 feet distance, scribed CS 1/16 S12 LS1071 BT.

A 28-inch diameter fir bears N.56°09'E., 9.60 feet distance, scribed X BT.

CORNERS ESTABLISHED THIS SURVEY

The one-quarter corner for Sections 11 and 12. Township 41 South, Range 4 West, Willamette Meridian.

At the corner point, I set a 2½-inch diameter iron post 22 inches in the ground, with a 2½-inch diameter brass cap attached, marked:

T41S R4W
 1/4
 S11 | S12
 1987
 LS 1071

and marked the following accessories:

A 16-inch diameter fir bears N.70°53'W., 24.29 feet distance, scribed 1/4S11 LS1071 BT.

A 19-inch diameter fir bears N.68°15'E., 16.05 feet distance, scribed 1/4 S12 LS1071 BT.

The east one-sixteenth corner for Sections 12 and 13, Township 41 South, Range 4 West, Willamette Meridian.

At the corner point, I set a 2½-inch diameter iron post 30 inches in the ground, with a 2½-inch diameter brass cap attached, marked:

T41S R4W
 E 1/16 — $\frac{S12}{S13}$
 1987
 LS 1071

and marked the following accessories:

An 11-inch diameter pine bears S.03°35'W., 35.39 feet distance, scribed E 1/16 S13 LS1071 BT.

A 13-inch diameter fir bears N.56°25'E., 30.20 feet distance, scribed E 1/16 S12 LS 1071 BT.

The center one-quarter corner for Section 12, Township 41 South, Range 4 West, Willamette Meridian.

At the corner point, I set a 2½-inch diameter iron post 26 inches in the ground, with a 2½-inch diameter brass cap attached, marked:

T41S R4W
 C1/4 — + — S12
 1987
 LS 1071

and marked the following accessories:

A 12-inch diameter fir bears N.26°56'W., 31.68 feet distance, scribed X BT.

An 18-inch diameter fir bears S.30°33'W., 43.60 feet distance, scribed C1/4 S12 LS1071 BT.

The 159-mile marker, Oregon-California State Line

At the corner point, I found a 3 1/2-inch diameter General Land Office brass cap monument protruding 24 inches above a mound of stone, marked:

U.S. GENERAL LAND OFFICE

42L OREGON 159M
CALIFORNIA

SURVEY
-1915-

and the following accessories:

A 21-inch diameter fir snag bears N. 30°42'W., 72.86 feet distance. This tree, now dead, is 8 feet high.

A 41-inch diameter pine snag bears S.77°05'E., 123.30 feet distance, with scribing 159MC BT visible.

A 14-inch pine bears S.01°56'W., 35.50 feet distance, with fragmentary scribing visible on a partly-healed blaze.

The 156-mile marker, Oregon-California State Line

At the corner point, I found a 3 1/2-inch diameter General Land Office Survey brass cap monument protruding 4 inches above a mound of stone, marked:

U.S. GENERAL LAND OFFICE

42L OREGON 156M
CALIFORNIA

SURVEY
-1915-

and the following accessories:

A 4 ft. x 4 ft. x 3 ft. mound of stone bears S.85°21'W., 14.90 feet distance.

An 18-inch diameter live oak bears N.48°40'W., 194.00 feet distance, with a healed blaze.

A 24-inch diameter pine bears N.22°47'W., 155.28 feet distance, with a healed blaze. This tree has a broken top.

A 26-inch diameter pine bears N.04°46'W., 140.16 feet distance, with a healed blaze.

A 22-inch diameter pine bears N.02°52'W., 80.55 feet distance, with a healed blaze.

A 14-inch diameter black oak bears W.11°16'E., 15.31 feet distance, with a healed blaze.

A 23-inch diameter pine bears N.50°01'E., 38.98 feet distance, with a healed blaze.

A 21-inch diameter live oak bears S.55°15'E., 58.07 feet distance, with a healed blaze.

I mark the following new accessories:

A 14-inch diameter pine bears S.40°59'E., 34.80 feet distance, scribed
T41SR4WS13 LS1071 BT.

A 7-inch diameter pine bears S.39°04'W., 21.30 feet distance, scribed X BT.

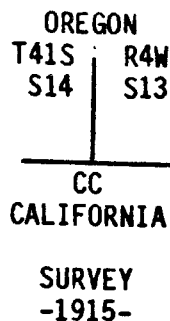
A 14-inch diameter pine bears N.19°40'W., 48.86 feet distance, scribed
T41SR4WS11 LS1071 BT.

A rock outcrop bears N.44°50'E., 38.89 feet distance, with BX0 chisled in
rock face with P.K. nail in center of X.

The closing corner for Sections 13 and 14, Township 41 South, Range 4 West,
Willamette Meridian.

At the corner point, as determined by F. W. Rodolf in 1915, and shown in
"DETAIL A" on the attached plat map, I found a 3-1/2-inch diameter G.L.O. brass
cap monument protruding 20 inches above ground, marked:

U.S. GENERAL LAND OFFICE



I marked the following new accessories:

A 6-inch diameter madrone bears N.40°01'E., 15.90 feet distance, bark scribed
CCT41SR4WS13 LS1071 BT.

A 5-inch diameter live oak bears N.22°42'W., 18.60 feet distance, scribed X
BT.

NOTE: See diagram - "DETAIL A" on the attached plat map.

The 158-1/8 mile marker, Oregon-California State Line

At the corner point, I found a 3 1/2-inch diameter General Land Office brass cap
monument protruding 16 inches above ground, marked:

U.S. GENERAL LAND OFFICE

42L OREGON 158 1/8M
CALIFORNIA

SURVEY
F. W. Rodolf
-1915-

and the following accessory:

A 3 ft. x 6 ft. x 6 ft. mound of stone bears N.82°29'W., 71.76 feet
distance.

I marked the following new accessories:

A 9-inch diameter fir bears S.14°28'E., 31.85 feet distance, scribed 158
1/8MP BT

An 11-inch diameter knobcone pine bears N.15°51'W., 62.57 feet, scribed
158 1/8MP BT

A 20-inch diameter live oak bears S.15°29'E., 60.60 feet distance, with a healed blaze.

A 52-inch diameter sugar pine bears S.37°18'W., 107.60 feet distance, with a healed blaze.

A 38-inch diameter live oak bears S.73°16'W., 91.90 feet distance, with a healed blaze.

A 23-inch diameter pine bears N.75°57'W., 56.20 feet distance, with scribing 57M30CCBT visible.

A 33-inch diameter pine bears N.68°04'W., 85.30 feet distance, with a healed blaze.

A 28-inch diameter fir bears N.00°23'W., 141.20 feet distance, with a healed blaze.

The one-quarter corner for Sections 12 and 13, Township 41 South, Range 4 West, Willamette Meridian.

At the corner point, I found a 2-inch diameter General Land Office brass cap monument protruding 18 inches above ground, marked:

U.S. GENERAL LAND OFFICE

1/4 — $\frac{S12}{S13}$

SURVEY
-1915-

and the following accessories:

A 9-inch diameter black oak bears N.18°44'E., 20.70 feet distance, with a healed blaze.

A dead and down pine bears S.35°22'E., 59.90 feet distance, with scribing 1/4 S13 visible.

I marked the following new accessory:

A 21-inch diameter fir bears S.05°36'W., 47.80 feet distance, scribed 1/4 S 13 LS1071 BT.

The Section Corner for Sections 11, 12, 13 and 14, Township 41 South, Range 4 West, Willamette Meridian.

At the corner point, I found a 2-inch diameter General Land Office brass cap monument protruding 20 inches above ground, marked:

U.S. GENERAL LAND OFFICE

T41S R4W

$\frac{S11}{S14} \mid \frac{S12}{S13}$

SURVEY
-1915-

And the following accessories:

A 23-inch diameter live oak bears N.09°10'E., 76.80 feet distance, with a healed blaze.

A 35-inch diameter fir bears N.04°36'W., 147.80 feet distance, with a healed blaze.

NOTE: See Diagram "DETAIL B" on the attached plat map.

The Witness Corner for State Line Monumnet 157-M 30 CH.

At the corner point, I found a 3 1/2-inch diameter General Land Office Survey brass cap monument, marked:

U.S. GENERAL LAND OFFICE

42L OREGON 157 M 30 CH
CALIFORNIA

SURVEY
-1915-

and the following accessories:

The closing corner for Sections 13 and 18, as described earlier in this narrative, and shown in "Detail B" on the attached plat map.

An 18-inch diameter black oak bears N.20°55'E., 86.60 feet distance, with a healed blaze.

A 24-inch diameter pine snag bears N.24°56'E., 119.60 feet distance, with scribing 7M30CCBT visible.

A 31-inch diameter live oak bears N.40°17'E., 57.10 feet distance with a healed blaze.

A 24-inch diameter pine snag bears N.65°48'E., 57.00 feet distance, with scribing 1 57M 30CCBT visible.

A mound of stone, 5 ft. x 4 1/2 ft. x 3 ft., bears S.83°37'E., 76.80 feet distance.

A sawed pine stump, bears S.73°11'E., 56.10 feet distance, with scribing 157M 30CCBT visible.

and the following accessories:

A 22-inch diameter fir bears S.23°21'E., 11.30 feet distance, with a healed blaze.

A 28-inch diameter pine bears S.41°04'W., 40.70 feet distance, with a healed blaze.

An 8-inch diameter live oak bears S.66°05'W., 6.20 feet distance, with no marks visible on an open, weathered blaze.

The Section corner for Section 12 and 13, Township 41 South, Range 4 West, and Sections 7 and 18, Township 41 South, Range 3 West, Willamette Meridian.

At the corner point, I found a 3 1/2-inch diameter General Land Office brass cap monument protruding 14 inches above ground, marked:

U.S. GENERAL LAND OFFICE
SURVEY
T 41 S
R4W | R3W
S12 | S7
S13 | S18
FWR
-1915-

and the following accessories:

A 24-inch diameter pine bears S.18°50'E., 27.40 feet distance, with a healed blaze.

A 24-inch diameter pine bears S.02°31'W., 40.80 feet distance, with a healed blaze.

I marked the following new accessories:

A 22-inch diameter pine bears N.59°58'E., 31.20 feet distance, scribed T41S R3WS7 LS1071 BT.

A 7-inch diameter pine bears N.58°09'W., 14.00 feet distance, scribed X BT.

The closing corner for Section 13, Range 4 West, and Section 18, Range 3 West, Township 41 South, Willamette Meridian.

At the corner point, as determined by Fred W. Rodolf in 1915, and shown in "DETAIL B" on the attached plat map, I found a 3 1/2-inch diameter General Land Office brass cap monument protruding 8 inches above a mound of stone, marked:

U.S. GENERAL LAND OFFICE
T 41 S
R4W | R3W
ORE | GON
S13 C | C S18
CALIFORNIA
SURVEY
-1915-

A 12-inch diameter black oak bears N.53°31'W., 36.90 feet distance, with a healed blaze.

A 13-inch diameter fir bears N.42°09'W., 33.80 feet distance, with a healed blaze.

A 10-inch diameter black oak bears S.61°51'W., 19.20 feet distance, with no marks visible on a decayed face. This tree is now dead.

A 13-inch diameter pine bears S.69°48'W., 30.10 feet distance, with scribing 4S12 BT visible on a partly healed blaze.

Section corner for Sections 1 and 12, Township 41 South, Range 4 West, and Sections 6 and 7, Township 41 South, Range 3 West, Willamette Meridian.

At the corner point, I found a standard Bureau of Land Management brass cap monument protruding 12 inches above ground, marked:

U.S. DEPT OF THE INTERIOR
DO NOT DISTURB

T 41 S	
R4W	R3W
S1	S6
S12	S7

1967

CADASTRAL SURVEYS
BUR. OF LAND MANAGEMENT

and the following accessories:

An 11-inch diameter fir bears N.05°24'W., 17.60 feet distance, with a healed blaze.

A 19-inch diameter madrone bears N.34°45'E., 33.70 feet distance, with no marks visible on an open blaze.

A 15-inch diameter fir bears N.36°21'E., 16.70 feet distance, with a healed blaze.

A 19-inch diameter fir bears S.68°38'E., 13.90 feet distance, with a healed blaze.

A sawed pine stump, estimated diameter 36 inches, bears S.15°07'W., 23.50 feet distance, with no marks visible on an open blaze.

A 6-inch diameter fir bears S.51°04'W., 10.55 feet distance, with a healed blaze.

The one-quarter corner for Section 12, Township 41 South, Range 4 West, and Section 7, Township 41 South, Range 3 West, Willamette Meridian.

At the corner point, I found a standard Bureau of Land Management brass cap monument protruding 10 inches above a small mound of stone, marked:

U.S. DEPT OF THE INTERIOR
DO NOT DISTURB

1/4	
R4W	R3W
S12	S7

1967

CADASTRAL SURVEYS
BUR. OF LAND MANAGEMENT

During my investigation of the monuments controlling the Oregon/California State line, I found the 156-mile marker, 158 1/8-mile marker, and 159-mile marker as described by Surveyor Rodolf in 1915. At the 157-mile 30 chain monument, my investigation discovered that Surveyor Rodolf was unable to remonument the exact position of the 157-M 30 CH position in 1915. Surveyor Rodolf set his monument 10 links (6.6 feet) east of the exact position. To control alignment along the State line, I calculated the true position for the 157-mile 30 chain monument. I did not set a monument at the true position. Rodolf's 1915 witness corner is described later in this narrative.

Offsets were calculated from random to true line. Lines, as noted on the attached plat, were posted with 6-foot aluminum posts with 54-2 property boundary signs attached. Trees along the line were blazed and painted with red timber-marking paint.

EQUIPMENT: Equipment utilized throughout this survey include Wild T-2 Theodolite and Sokkisha Red 2L distance meter.

BASIS OF BEARING: Solar Observation

CORNERS ACCEPTED FOR CONTROL

Section corner for Sections 1, 2, 11 and 12, Township 41 South, Range 4 West, Willamette Meridian, Jackson County, Oregon.

At the corner point, I found a 2 1/2-inch diameter brass cap monument protruding 12 inches above ground in a mound of stone, marked:

T41S	R4W
S2	S1
S11	S12
1986	
LS 1071	

and the following references:

An 8-inch diameter pine bears S.77°16'E., 24.40 feet distance, with scribing T41S R4W S12 LS1071 BT visible (R.S. 10698)

A 5-inch diameter oak bears S.06°45'W., 17.60 feet distance, with scribing T41S R4WS11 LS1071 BT visible (R.S. 10698)

An 8-inch diameter black oak bears N.85°50'W., 33.00 feet distance, with scribing 4WS2 found when I opened blaze (original B.T.)

A 13-inch diameter fir bears N.48°45'W., 24.20 feet distance with scribing T41S R4WS2 LS1071 BT visible. (R.S. 10698)

A 23-inch diameter pine bears N.08°36'E., 51.30 feet distance, with scribing T41SR visible on an opened face. (original B.T.)

One-quarter corner for Sections 1 and 12, Township 41 South, Range 4 West, Willamette Meridian.

At the corner point, I found a standard Bureau of Land Management brass cap monument protruding 10 inches above a 1 ft. x 2 1/2 ft. x 2 1/2 ft. mound of stone, marked:

U.S. DEPT OF THE INTERIOR
DO NOT DISTURB

T41S	R4W
14	S1
	S12
1967	

CADASTRAL SURVEYS
BUREAU OF LAND MANAGEMENT

and the following accessories:

SURVEY NARRATIVE TO COMPLY WITH
PARAGRAPH 209.250 OREGON REVISED STATUTES

SURVEY FOR: Rogue River National Forest
P. O. Box 520
Medford, OR 97501

LOCATION : Sections 12 and 13, Township 41 South, Range 4 West, Willamette Meridian, Jackson County, Oregon

PURPOSE : To establish corners, and mark and post National Forest boundaries within and surrounding Sections 12 and 13.

HISTORY OF SURVEYS : The original exterior boundary and subdivision of Township 41 South, Range 4 West, Willamette Meridian, was surveyed by Samuel W. Lackland under Contract No. 429, dated January 5, 1882.

The original Oregon/California State line, between mile posts 156 and 159, was surveyed by Daniel Majors in 1869. Fred W. Rodolf retraced the State line in this area and recovered and remonumented the original 156 mile post; 157 mile 30 chain (set a witness corner 10 links east); 158 1/8 mile post; and the 159 mile post, under Group 18, dated February 15, 1915. Deputy Rodolf discovered that Deputy Lackland had reported fictitious closings to a fraudulent State line when he (Lackland) surveyed Township 41 South, Range 4 West, Willamette Meridian, in 1882. Deputy Rodolf then conducted a resurvey of the south boundary of Section 12, and the east and west boundaries of Section 13, as they closed upon the recovered Oregon/California State line, and established and remonumented corner points as indicated on the attached plat map.

The Bureau of Land Management Cadastral Surveyor R. Aanrud remonumented the north one-quarter corner, northeast section corner, and the east one-quarter corner for Section 12 from original evidence in 1967.

The northwest section corner for Section 12 was remonumented from original evidence by P.L.S. 1071 during record survey No. 10698, dated August 27, 1986.

No other surveys are of record.

PROCEDURE : Prior to commencement of this survey, an investigation of all controlling section, one-quarter section corners, and State line monuments was made. With the required controlling corner positions verified, I established a series of traverse lines tying all corners to part of a closed traverse. From this data, a search area was computed for the west one-quarter corner of Section 12. After an extensive investigation, of this search area as well as topographic calls, I could find no conclusive evidence of the original corner. Therefore, I set the one-quarter corner for Sections 11 and 12 by proportionate measurement.

With controlling corners recovered or established, I computed the subdivision of Section 12 and ran a closed traverse establishing temporary positions for the center one-quarter, center-west, southwest, center-south and southeast one-sixteenth corners for Section 12; and the east one-sixteenth corner of Sections 12 and 13; closing my traverse to the exterior control traverse. I then calculated moves and set monuments at each corner point as described later in this narrative.

The one-quarter corner for Sections 24 and 25, Township 39 South, Range 1 West, W.M.

At the corner point, I set a 2 1/2-inch diameter by 32-inch long iron post flush with a mound of stones, with a 2 1/2-inch diameter brass cap marked:

T39S R1W
S24
1/4 _____
S25
1987
LS 1071

and mark the following:

A 20-inch diameter fir bears N.80°56'W., 17.80 feet distance, scribed
1/4 S24 LS 1071 BT.

A 19-inch diameter fir bears S.75°39'W, 27.12 feet distance, scribed
1/4 S25 LS1071 BT.

September 15, 1987

HAROLD L. CENTER
Registered Professional Land Surveyor
Oregon Certificate No. 1071

