

10993

SURVEY FOR
ATLAS-GEST CORP
2788 CRATER LAKE HWY.
MEDFORD, OREGON 97504

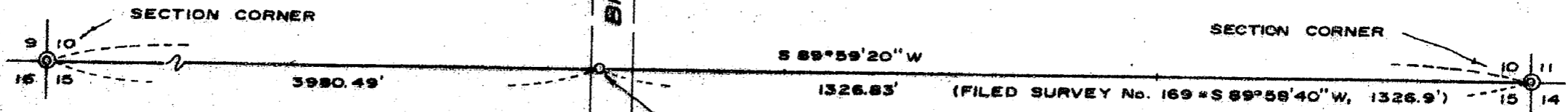
SURVEY BY
BOYDEN SURVEYORS
108 MISTLETOE STREET
MEDFORD, OREGON 97501

REGISTERED
PROFESSIONAL
LAND SURVEYOR

Gary D. Kaiser
OREGON
JULY 18, 1967
GARY D. KAISER
No. 803

LOCATION
EAST-HALF OF SECTIONS 10 & 15,
T.36 S., R.1 W., W.M.
JACKSON COUNTY, OREGON

SCALE: 1" = 200'

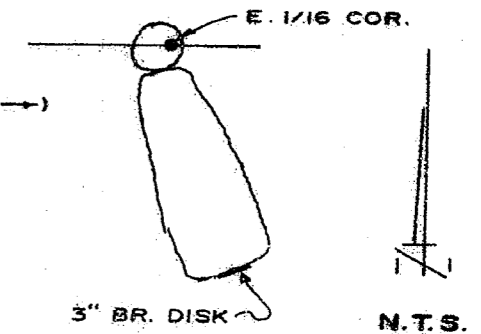


DATE
SEPTEMBER 29, 1987

E. 1/16 CORNER
SET A 2" BR. CAP IN AN
8" DIAMETER BY 24" CONC.
MON. WITH TOP 3" DEEP
(FOR CAP MARKINGS AND
CORNER RP'S SEE NARRATIVE)
FOUND THE ARMY ENGINEERS CONC. MON.
WITH 3" BR. DISK REFERRED TO ON FILED
SURVEY No. 169 TIPPED OVER LYING
SOUTHERLY FROM THE MONUMENT SET (SEE INSET →)

LEGEND
⊙ SECTION CORNER RE-ESTABLISHED
BY THE COUNTY SURVEYORS
OFFICE. FOUND 2" BR. DISK
SET IN CONC.

BASIS OF BEARINGS
FILED SURVEY No. 10966



**** RECEIVED ****
Date 10-2-87 By JK
This survey consists of:
1 sheet(s) Map
2 page(s) Narrative
JACKSON COUNTY
SURVEYOR

10993

10993

FROM WHICH:

Found the Army Engineers concrete monument with 3" br.
disk with standard Army Engineers markings plus;

1942
T36S R1W

10

15

E 1/16

Lying horizontal as shown on the annexed map.

The Northwest corner of a 10' x 10' storage shed bears
South 59° 05' East, 209.5 feet.

Power Pole No. B7383 bears North 79° 39' East, 52.2 feet
to the center.

A metal sign post, U.S. Sprint warning sign "Buried Fiber
Optic Cable", bears North 5° 13' West, 71.5 feet.

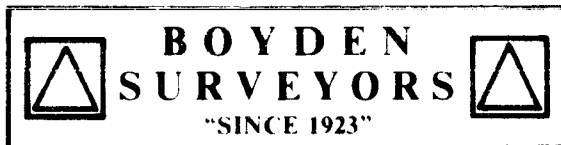
Fence corner on East R/W of Bigham-Brown Road and fence
line Easterly bears North 83° 25' East, 50.7 feet.

Corner lies 9 feet East of West R/W fence and 19.3 feet
West of yellow line and approximately 0.2 miles North from
Antelope Creek Bridge.

REGISTERED
PROFESSIONAL
LAND SURVEYOR

Gary D. Kaiser

OREGON
JULY 16, 1967
GARY D. KAISER
No. 803



MARK E. BOYDEN
R.P.L.S. ORE 281

108 MISTLETOE ST., MEDFORD, OREGON 97501
PHONE (503) 773-6000

GARY D. KAISER
R.P.L.S. ORE 803

SURVEY NO. 10993

SURVEY NARRATIVE TO COMPLY WITH O.R.S. 209.250

SURVEY FOR: ATLAS-GEST CORPORATION
2788 Crater Lake Hwy.
Medford, Oregon, 97504

SURVEY BY: BOYDEN SURVEYORS
108 Mistletoe St.
Medford, Oregon, 97501

LOCATION: East-half of Section 10 & 15, T.36S.R.1W.,
W.M., Jackson County, Oregon.

BASIS OF BEARINGS: Filed Survey No. 10966

DATE: September 29, 1987

PURPOSE: To monument the East 1/16 corner common to
Sections 10 & 15, T.36S., R.1W., W.M. The
monument set previously (see Filed Survey
No. 169) by the Army Engineers having been
tipped over by the installation of a buried
fiber optic cable.

PROCEDURE:

With no local references of record for the Army Engineers corner monument, the East 1/16 corner was re-set at proportionate distance, using E.D.M. equipment, between the two section corners as shown on the annexed map (the 1/4 corner common to Section 10 & 15 being lost).

At the East one-sixteenth corner set an 8" diameter by 24" concrete monument with a 2" br. cap 3" below ground surface. Also placed a piece of 3/4" iron pipe in the concrete monument for magnetic locator purposes.

Cap marked;

RLS 803
E 1/16 $\frac{S10}{S15}$
1987

