



Sighted spike
& Edwards
set by City
Chained O.K.

Sighted &
at Boardman St
Set
Spike

26.90'
To N.W. cor
Hendall Addition

Found Center spike
set by City

NIANTIC 415' STREET

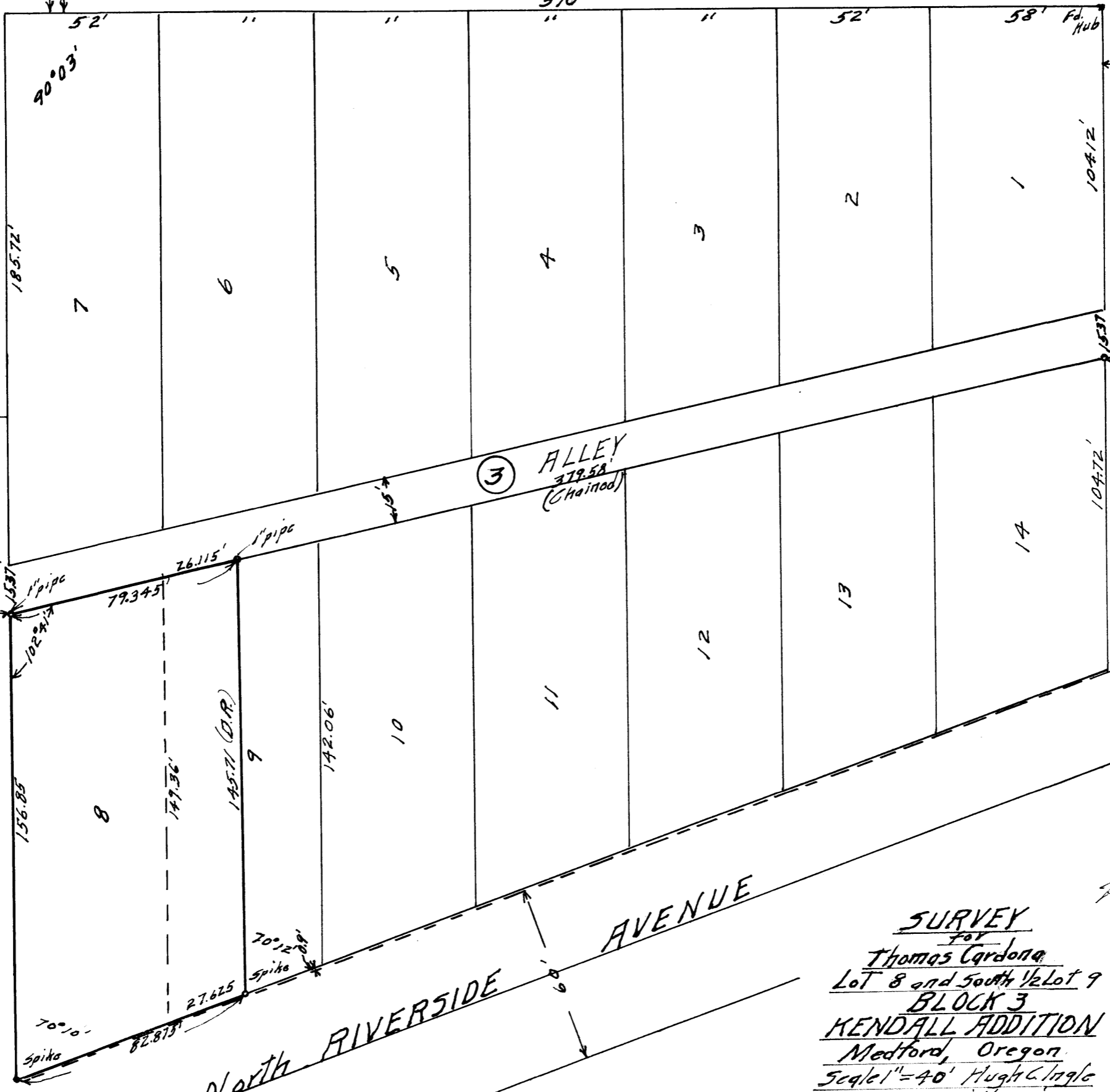
LIBERTY STREET

MANZANITA STREET

LIBERTY

AVENUE

NORTH RIVERSIDE



3 ALLEY
379.58
(Chained)



SURVEY
for
Thomas Cardona
Lot 8 and South 1/2 Lot 9
BLOCK 3
KENDALL ADDITION
Medford, Oregon
Scale 1" = 40' Hugh C. Ingle
Feb. 1958 Civil Engineer

Found
Spike
1.0 East

Found
Spike
1.0 East

NARRATIVE REPORTSurvey ForThomas CardonaLot 8 and South ½ Lot 9BLOCK 3Kendall AdditionMedford, OregonPurpose of Survey.

To determine alley line and corners of property.

Procedure.

Using Niantic Street center line as base line I found spikes set by city locating intersection street centers on Niantic at Manzanita and at Edwards Streets. Record distances (which agreed with plat were used to locate intersection of Liberty and Niantic.

Then ran center lines on Liberty and Manzanita Streets East from Niantic record distances and angles and located ends of alley line.

Also ran record distance East to Westerly line of North Riverside Avenue, Found spike centers at Riverside line on centers of Liberty and Manzanita. These agreed on angle from Niantic but were one foot long on distance.

Set 1" pipe corners on alley line. Advised building one foot inside of line.

Existing poles and sheds on Eastside of alley are on irregular line and East of alley line.

