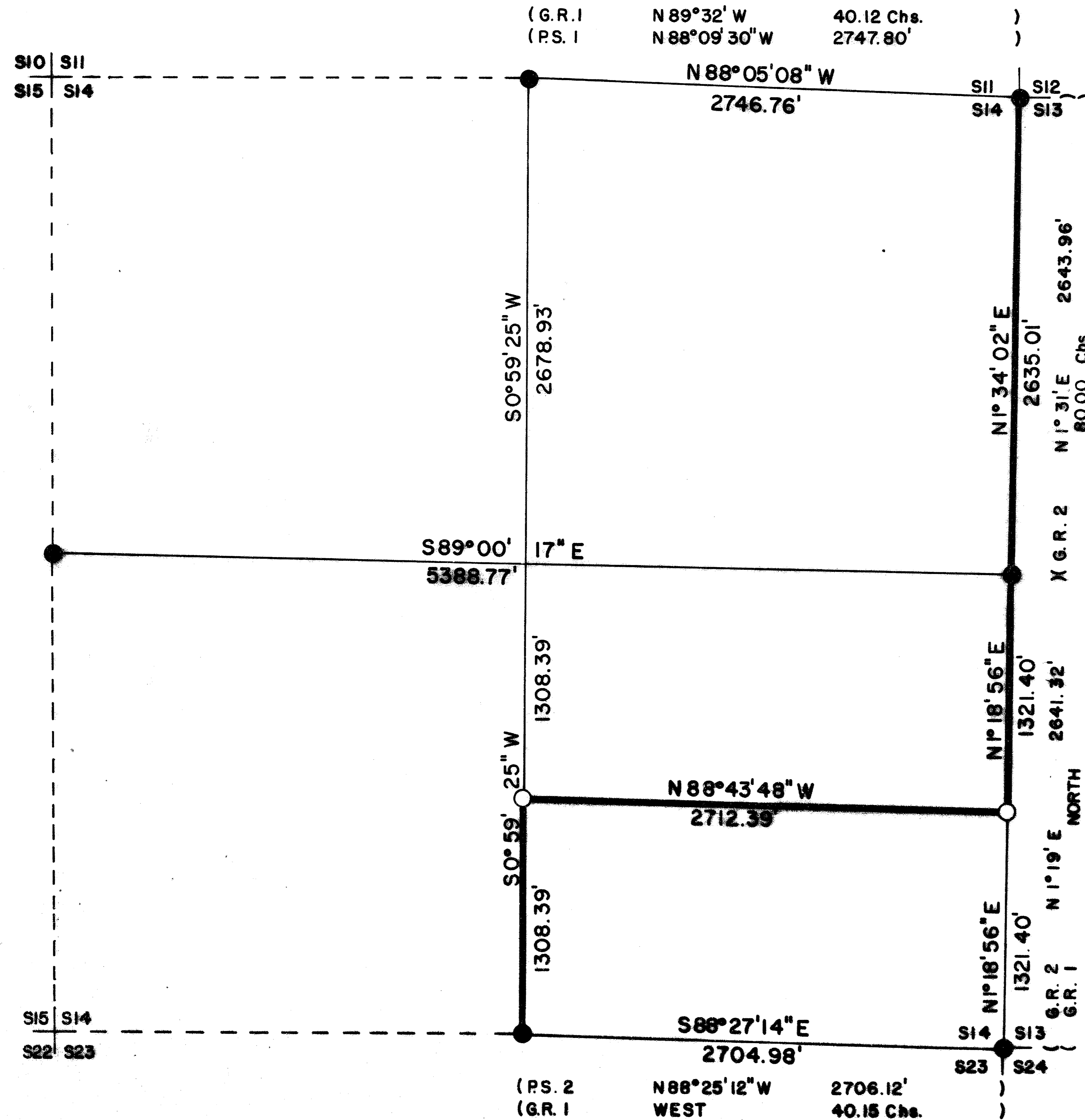


SI4 T35S R3E W.M.



CERTIFICATE OF SURVEY

I, ARTHUR R. RAMBO, REGISTRATION No. 1086 REGISTERED PROFESSIONAL LAND SURVEYOR STATE OF OREGON, HEREBY CERTIFY THAT THIS MAP CORRECTLY REPRESENTS A SURVEY MADE BY ME OR UNDER MY DIRECTION IN CONFORMANCE WITH THE LAWS OF THE STATE OF OREGON.



LEGEND

- SET 5/8" BY 30" REBAR WITH 1 1/2" ALUM. CAP
- FOUND STANDARD BLM MONUMENT
- G.R. 1 1856 GOVERNMENT RECORD
- G.R. 2 1975 GOVERNMENT RECORD
- P.S. 1 PRIVATE SURVEY No. 6077
- P.S. 2 PRIVATE SURVEY No. 6744
- LINE POSTED AND BLAZED THIS SURVEY

BASIS OF BEARING

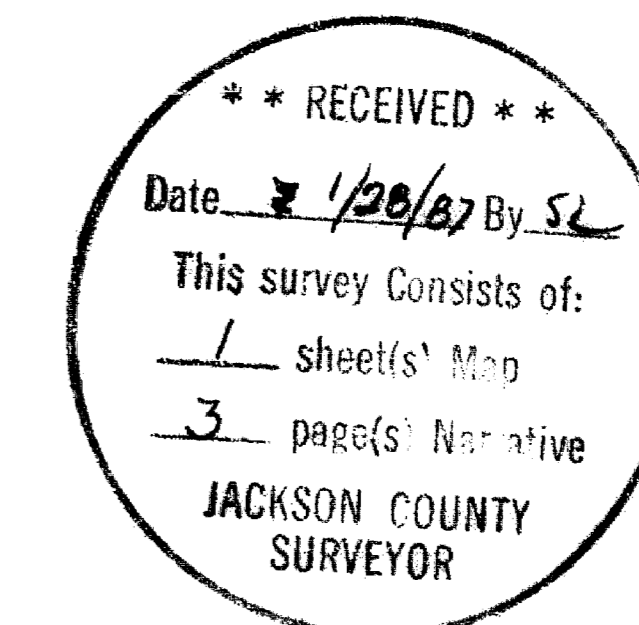
SOLAR OBSERVATION

SCALE

1" = 500'

DATE

JANUARY 26, 1987



SURVEY NARRATIVE TO COMPLY WITH O.R.S. 209.250

Location: East Half of Section 14, Township 35 South, Range 3 East, Willamette Meridian, Jackson County, Oregon.

Survey for: Medford Resources Corporation
P. O. Box 550
Medford, Oregon 97501

Survey by: Arthur R. Rambo PLS 1086
735 Vista Park Drive
Eagle Point, Oregon 97524

Date: January 26, 1987

Purpose: To mark and post the boundaries of Medford Resources Corporation land in the Southeast quarter and along the East section line of said section, as shown on the plat to accompany this narrative.

Procedure: The original survey of Section 14 was completed by Nathaniel Ford under contract #58 dated April 18, 1855. The Northeast corner, North one-quarter corner, and West one-quarter corner had been reestablished by the Jackson County Surveyor from original evidence. The Bureau of Land Management, Cadastral Surveyors have reestablished the South one-quarter, Southeast and East one-quarter corners from original evidence. The Bureau of Land Management, Cadastral Surveyors remonumented the North one-quarter and Northeast corners holding the reestablishment position of the Jackson County Surveyor.

I performed a closed traverse survey beginning at the West one-quarter corner, then I proceeded to the South one-quarter corner, then to the Southeast corner, then to the East one-quarter corner, then to the Northeast corner, then to the North one-quarter corner, then back to the West one-quarter corner closing the survey. I then performed a closed traverse of the interior lines needed, beginning and closing on the exterior lines of the section. I set corners and posted lines as shown on the plat to accompany this narrative.

CORNERS FOUND AND ACCEPTED FOR CONTROL:

All measurements to bearing trees are to the center of tree at the base unless otherwise stated.

One-quarter corner common to Sections 14 and 23, Township 35 South, Range 3 East. At the corner location I found a standard Bureau of Land Management monument, exposed 8 inches, marked:

T35S R3E
1 S14
4 S23
1966

From which:

- A 19 inch dia. Pine bears N 1° 55' W 27.8 feet with scribe marks visible in a partially healed face.
- A 17 inch dia. Fir bears S 58° 51' E 23.2 feet, unopened face.
- A 44 inch dia. Cedar stump bears S 29° 22' W 23.7 feet marked 1/48 in upper face, lower face burned with marks visible.

Section corner common to Sections 13, 14, 23, and 24, Township 35 South, Range 3 East. At the corner location I found a standard Bureau of Land Management monument, exposed 9 inches, marked:

Tax Lot #35-3E-02300

T35S R3E
S14 | S13
 S23 | S24

From which:

- A 15 inch dia. Fir bears N 67° 24' W 23.2 feet, unopened.
- A 29 inch dia. Pine stump bears N 42° 27' W 26.1 feet, unopened.
- A 16½ inch dia. Fir bears N 12° 07' E 31.0 feet, unopened.
- A 14 inch dia. Fir bears S 0° 00' E 1.75 feet, unopened.
- A 21 inch dia. Fir bears S 47° 51' W 20.5 feet.

One-quarter corner common to Sections 13 and 14, Township 35 South, Range 3 East. At the corner location I found a standard Bureau of Land Management monument, exposed 7 inches in a mound of stone, marked:

T35S R3E
S14 | S13
 1978

From which:

- An 11½ inch dia. Fir bears N 9° 25' E 16.5 feet, unopened.
- A 12 inch dia. Fir bears S 71° 15' W 26.0 feet, unopened.

Section corner common to Sections 11, 12, 13, and 14, Township 35 South, Range 3 East. At the corner location I found a standard Bureau of Land Management monument, exposed 5 inches, in a mound of stone, marked:

T35S R3E
S11 | S12
S14 | S13
 1962

From which:

- A 1-3/4 inch dia. pipe with a 2-1/4 inch pipe cap is against the North side of Bureau of Land Management monument.
- A 15 inch dia. Fir bears N 19° 50' E 16.1 feet, unopened.
- A 9 inch dia. Fir snag bears N 28° 40' E 29.1 feet, unopened.
- An 18 inch dia. Oak bears N 52° 24' E 11.6 feet, unopened.
- A 22 inch dia. Fir bears S 51° 40' E 20.3 feet, unopened.
- A 17 inch dia. Fir bears S 32° 48' E 23.6 feet, unopened.
- A 10 inch dia. Pine bears S 51° 37' W 29.1 feet, unopened.
- A 21 inch dia. Fir bears S 60° 42' W 32.1 feet, unopened.
- A 17 inch dia. Fir bears N 74° 42' W 56.9 feet, unopened.
- The stump hole of a 23 inch dia. down Fir bears N 51° 58' W 23.3 feet.

One-quarter corner common to Sections 11 and 14, Township 35 South, Range 3 East. At the corner location I found a standard Bureau of Land Management monument, exposed 8 inches, marked:

T35S R3E
S11
 S14
 1962

From which:

- The Jackson County monument, which was removed by the Bureau of Land Management, now bears N 27° 42' E 2.9 feet.
- A 15 inch dia. Fir bears N 62° 28' W 3.5 feet, unopened.
- A Pine stump hole bears N 45° 12' W 42.5 feet.
- An 18 inch dia. Fir bears N 4° 12' W 35.8 feet, unopened.
- A 13½ inch dia. Fir bears S 15° 19' E 9.4 feet, unopened.
- An 8 inch dia. Pine snag bears S 9° 49' W 24.2 feet marked 1/4814BT all in one face.
- Remains of a Pine stump bears S 45° 25' E 88.9 feet.

One-quarter corner common to Sections 14 and 15, Township 35 South, Range 3 East. At the corner location I found a Jackson County monument, exposed 3 inches in a mound of stone, marked:

T35S R3E
1/4S
15 | 14
1977

From which:

- A 10 inch dia. Fir bears N 75° 35' E 30.7 feet, unopened.
- A 13½ inch dia. Fir bears S 9° 04' W 21.4 feet, unopened.

CORNERS SET THIS SURVEY:

All measurements to bearing trees are to the center of tree at the base unless otherwise stated. All bearing trees have a brass washer marked LS 1086 nailed to the BT face of tree.

South one-sixteenth corner common to Sections 13 and 14, Township 35 South, Range 3 East. At the corner location I set a 5/8 by 30 inch rebar with a 1½ inch dia. Alum. cap, exposed 10 inches in a mound of stone, marked:

T35S R3E
S1/16
S14 + S13
LS1086

From which:

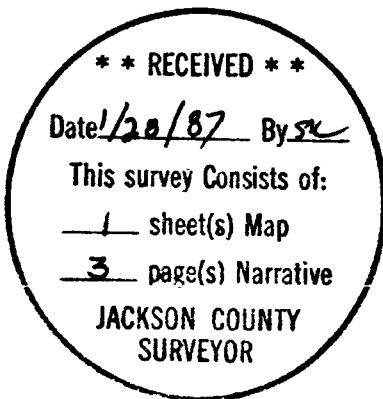
- A 5½ inch dia. Cedar bears N 9° 04' W 30.9 feet marked S1/16 S14 in upper face, BT in lower face.
- A 12 inch dia. Fir bears N 41° 12' E 23.6 feet marked S1/16 S13 in upper face, BT in lower face.

Centersouth one-sixteenth corner of Section 14, Township 35 South, Range 3 East. At the corner location I set a 5/8 by 30 inch rebar with a 1½ inch dia. Alum. cap, exposed 3 inches in a mound of stone, marked:

T35S R3E
S14
CS + 1/16
LS1086

From which:

- A 5½ inch dia. Cedar bears N 25° 07' W 36.5 feet marked CS1/16S14 in upper face, BT in lower face.
- A 7 inch dia. Fir bears N 15° 08' E 22.7 feet marked CS1/16S14 in upper face, BT in lower face.



Arthur R. Rambo

