

10754

SURVEY SITUATE IN THE NE 1/4 OF SECTION 16,
T. 38 S., R. 2 W., W.M., JACKSON COUNTY, ORE.

For: Michael A. Grassmueck
2858 Lapine Avenue
Medford, OR 97501

Purpose: To locate and monument a portion of the N line
of O.R. 82-08221 lying 45.00 feet
S of the N line of the SW 1/4 NE 1/4.

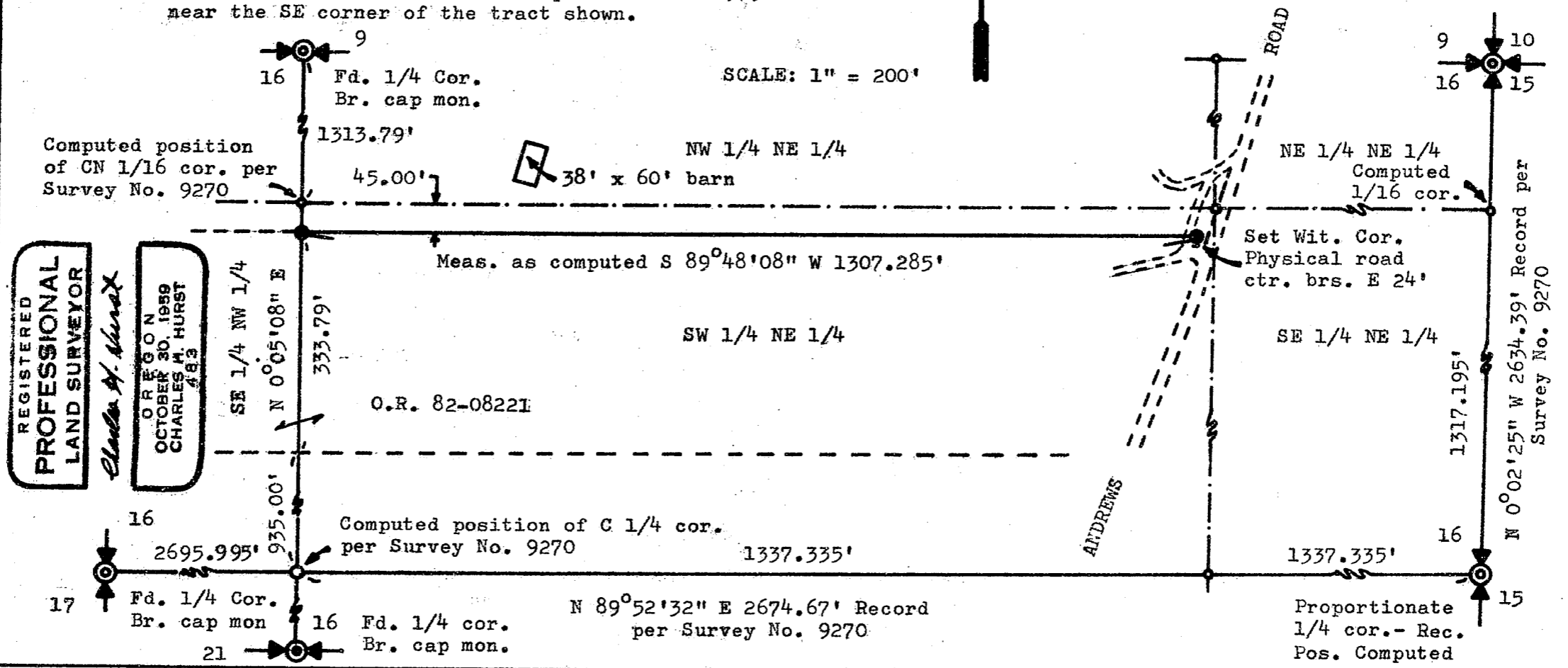
Procedure: Per client's instructions, record data shown on the
plat for Survey No. 9270 was utilized in conjunction
with that for Survey No. 8208. Survey control was
established from a random line point set in 1979
near the SE corner of the tract shown.

SURVEY BY:
Charles H. Hurst
765 Sunrise Avenue
Medford, OR 97504
November 19, 1986

**** RECEIVED ****
Date 12/16/86 By SL
This survey consists of:
1 sheet(s) Map
0 page(s) Narrative
JACKSON COUNTY
SURVEYOR

LEGEND
● Set 5/8" x 24" iron pins
== Existing roads

Basis of Brgs.
Survey No. 8208



REGISTERED
**PROFESSIONAL
LAND SURVEYOR**
Charles H. Hurst
OREGON
OCTOBER 30, 1959
CHARLES H. HURST
483

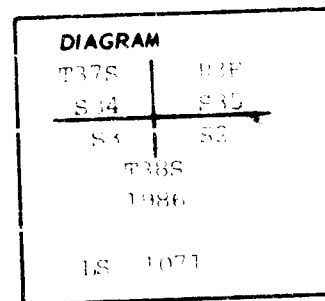
10754

CERTIFIED RECORD OF LAND CORNER MONUMENTATION

History of original corner establishment:

The original corner position for Sections 2 and 3, Township 28 South, and Sections 34 and 35, Township 37 South, Range 3 East, Willamette Meridian, Jackson County, Oregon, was established by Sewall Truax under contract No. 90, dated July 8, 1859.

This corner position was remonumented from original evidence by Richard Templin, R.E. 3024, during Jackson County Record Survey No. 4948 A, dated September 28, 1972.



Description of corner evidence found:

At the corner point, I found a 5/8-inch diameter iron pin with a plastic cap marked "TEMPLIN" RE 3024," and the following accessories:

A 16-inch diameter fir bears S.38°58'E., 25.40 feet distance, with scribing R3BT visible on a partly-healed blaze.

A root hole bears S.24°02'E., 14.20 feet distance, with a rotted fir alongside, and reverse scribing R3T38 visible on a loose piece of wood (original tree).

A 20-inch diameter fir bears S.68°04'W., 10.40 feet distance, with scribing 24 BT visible on a partly-healed blaze.

A 17-inch diameter fir bears N.27°07'W., 19.50 feet distance, with fragmentary scribing visible on a partly-healed blaze.

A 21-inch diameter fir bears N.37°12'E., 2.20 feet distance, with scribing BT visible on a partly-healed blaze.

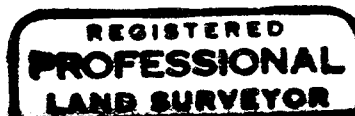
A 32-inch diameter fir bears N.45°04'E., 45.60 feet distance, with scribing T37 visible on a decayed face (original tree).

Description of monument and accessories I established to perpetuate the original location of this corner

At the corner point, directly over the found 5/8-inch diameter iron pin, I drove a 1-inch (inside diameter) iron post with a 3-inch diameter bronze disk cemented on top, and marked as shown in diagram. I surrounded monument with a small mound of stone.

November 6, 1986

HAROLD L. CENTER
Registered Professional Land Surveyor
Oregon Certificate No. 1071



Harold L. Center
 OREGON
 HAROLD L. CENTER
 NOV 24, 1986
 No. 1071

Office of County of
 State of, I hereby certify that the within instrument was filed in this office
 for record on the day of; 19....., at o'clock m., (signed)
 by
 (COUNTY OFFICIAL) (DEPUTY)