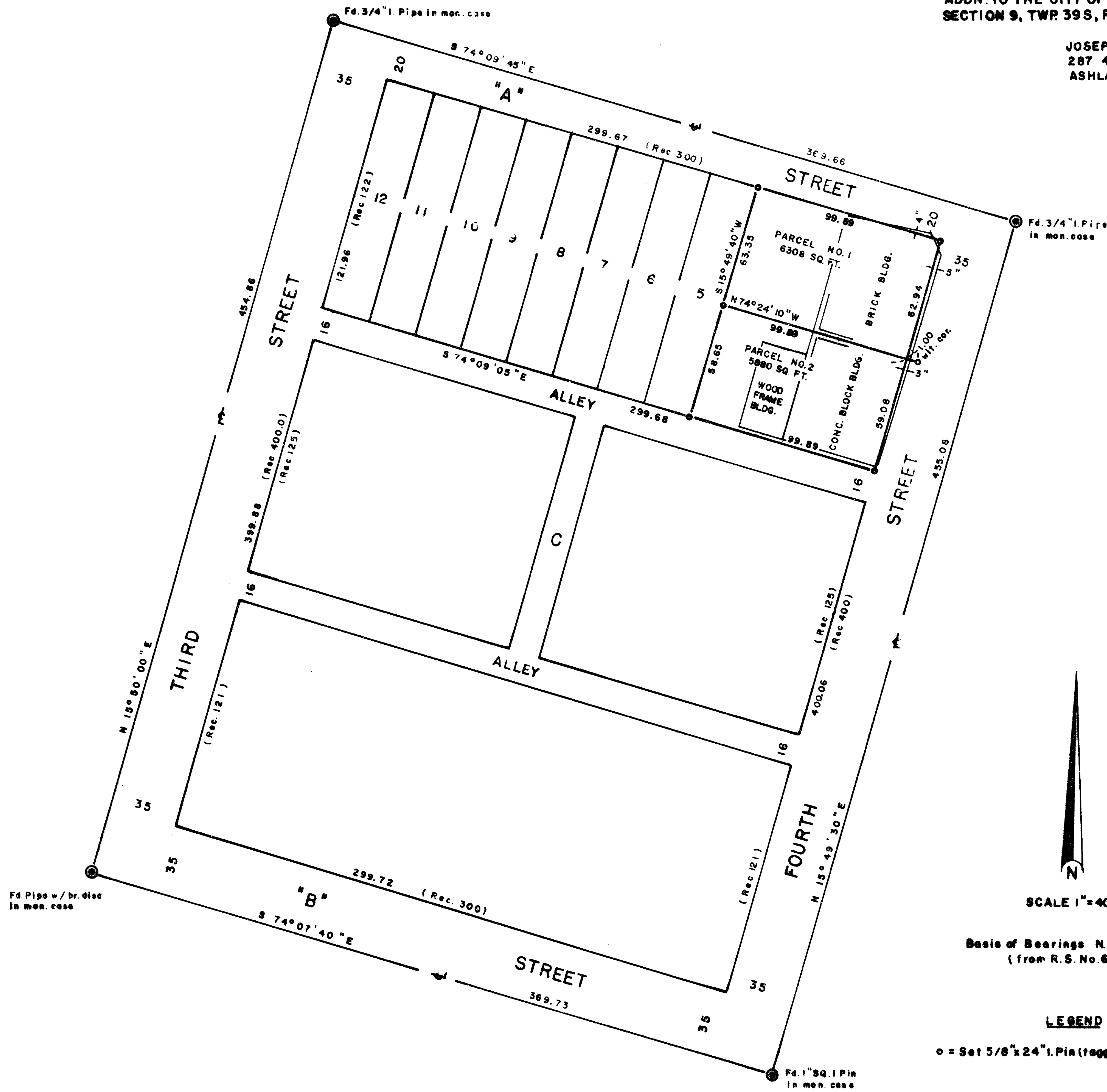


MINOR LAND PARTITION

LOCATED IN LOTS 1, 2, 3 and 4, BLOCK "C", RAILROAD
ADDN TO THE CITY OF ASHLAND IN THE NE 1/4 OF
SECTION 9, TWP. 39S, R1E, W.M., JACKSON CO. ORE.

FOR
JOSEPH GARFAS
287 4th STREET
ASHLAND, OREGON



Examined and approved by the Ashland Planning Commission this 24th day of October 1986

By: Steve Johnson

Filed for record this the 10 day of October 1986 at 1:56 O'clock P.M. and recorded in Volume 7 Page 36 of the "MINOR LAND PARTITION" records of Jackson County, Oregon.

Kathleen S. Beckett By: Kerry Jernach
County Clerk Deputy

I, George R. Burrell, a duly Registered Professional Land Surveyor of the State of Oregon, hereby certify that this map correctly represents a survey made by me.
Sept. 29, 1986

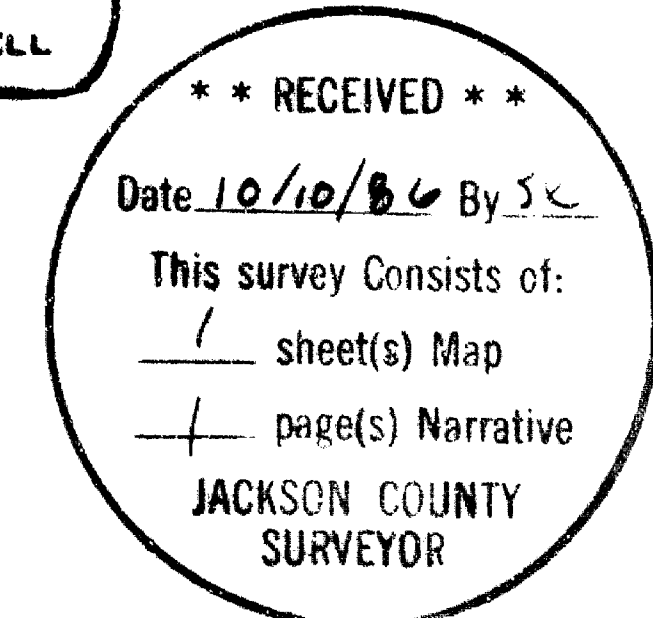
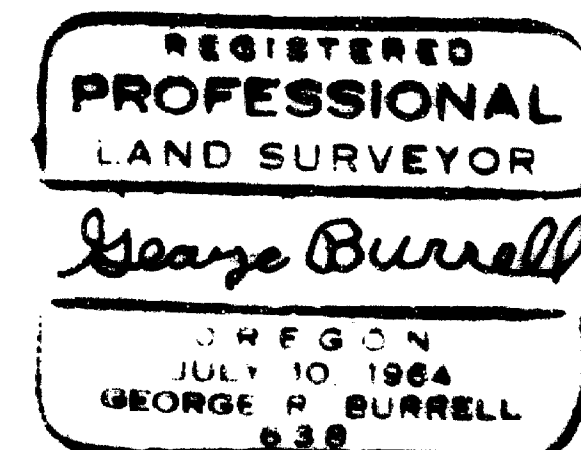


SCALE 1"=40'

Basis of Bearings N.O.A.A. (true)
(from R.S. No. 6048)

LEGEND

o = Set 5/8" x 24" I. Pin (tagged R.L.S.638)



SURVEY NO. 10723

SURVEY NARRATIVE TO COMPLY WITH O. R. S. 209.250

FOR: Joseph Garfas
287 Fourth Street
Ashland, Oregon

PURPOSE:

To monument and describe two parcels as directed by the client according to tentative approval of a Minor Land Partition by the City of Ashland.

PROCEDURE:

The exterior boundaries of Lots 1,2,3 and 4, Block "C" of the RAILROAD ADDN. was established by proportional distance using found City Street monuments as shown on the accompanying map. The monuments established by Recorded Survey No. 6048 have been destroyed by construction.

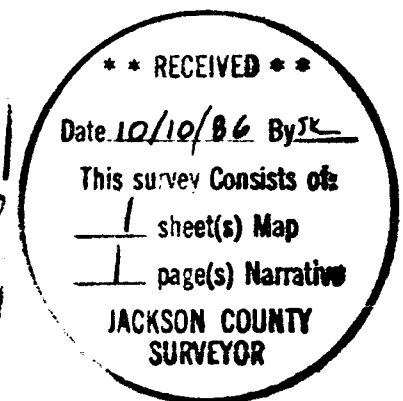
The boundary common to Parcels No. 1 and 2 was established at the Western and Eastern exposure of the existing brick and concrete block building exterior walls where they come in contact with each other. Accordingly, unobservable interior points common to said walls may not be symmetrical with said common parcel boundary.

BY: George Burrell, R.L.S.
1379 Brookdale
Medford, Oregon 97504
Sept. 29, 1986

REGISTERED
PROFESSIONAL
LAND SURVEYOR

George Burrell

OREGON
JULY 10, 1964
GEORGE R. BURRELL
638



Tax Lot No. 100-39-1E-92A