

10716

* RECEIVED *

Date 10/3/86 By SW

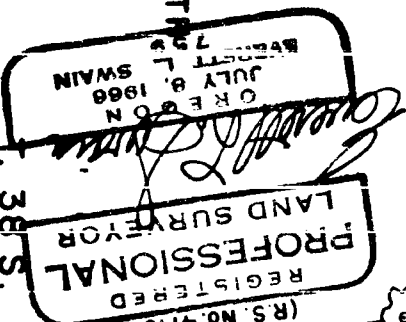
This survey consists of:

1. A Survey Map

2. A Narrative

JACKSON COUNTY SURVEYOR

MORTIMER



A White Oak, 14" DBH, with healed blaze & bearing tree tag.

SECTION CORNER
Re-set 2" Galv. iron pipe with 3" diam. Br. Cap mkd: SWAIN SURVEYING T. 385.

R. 2 E.
R.L.S. 759 1971
Sec. 531 S32 R. 2E.
Cor. S 6 S 5 T. 39S.

Expose 2" +
Circ. Draw

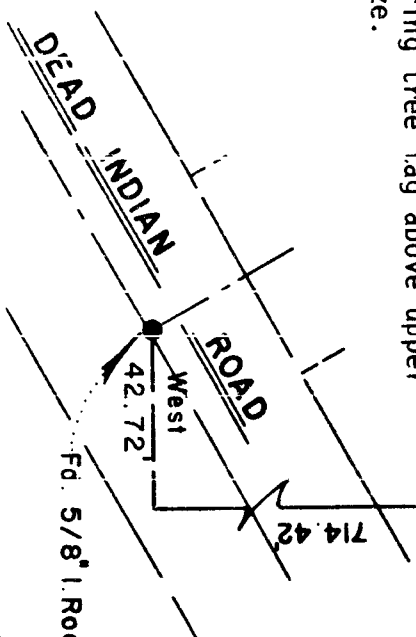
N. 89° 00' W. 162.2'
A White Oak, 10-1/2" DBH, scribed PLS 759 in upper blaze & BT in lower blaze. Placed brass nail and tag mkd: LS 759 between the 'E' & 'T'. Placed T. 39 S.
bearing tree tag above upper blaze.

N. 07° 00-1/2' W. 165.4'
R. S. No. 4719 = N. 07° 02' 05" W. 163.35'

R. S. No. 4719 = S. 61° 31-1/2' E. 214.0'
R. 2 E.

R. 2 E.
R. S. No. 4719 = S. 61° 31' 05" E. 214.1'

A White Oak, 9-1/2" DBH, with healed blaze & bearing tree tag.



SECTION CORNER RE-ESTABLISHMENT

In July, 1986 the section corner common to Sections 31 & 32, T. 38 S., R. 2 E. and Sections 5 & 6, T. 39 S., R. 2 E., of the Willamette Base and Meridian, Jackson County, Oregon was visited by me and found to have been distributed. The location of this monument, as set by me in 1971, was 0.9+ West of the position as found in July of this year. From control points and monuments set by me in 1971 and recovered by me in July and October of this year, I proceeded to re-set the same and monuments set by me in 1971 and shown on Recorded Survey No. 4719. In 1971 there was no road in the immediate location as was monumented by me in 1971 and shown on Recorded Survey No. 4719. In 1971 there was a road in the immediate area. There is now a road West of said section corner. I believe this was the most likely reason for the section corner being disturbed. No fence corner now exist as was reported in Recorded Survey No. 4719. In 1971 the bearing trees were located by utilizing a Wild T-16 and a 300 foot metal tape. The re-measurements were made utilizing a Wild T-2 and a Topcon EDM1. There is a slight variation in bearing from the 1971 measurement due mainly to the lack of opening said blazes to get the same location as was used at that time. However, it is felt that the variation is well within reason. An additional bearing taken to help perpetuate this corner location. This corner location was monumented with the same galvanized iron pipe which is now set in concrete and a ring of stones, more or less flush with the ground. A metal post with a 'Survey Monument' warning sign was placed Southwesterly, 3 feet from said pipe monument. Measurements made to said corner location in 1971 were made with a H-P 3800A distance meter. Measurements made to said corner in 1986 were made with a Topcon DM-S1 distance meter. The basis of bearing is the same as Recorded Survey No. 4719.

October 27, 1986

SWAIN SURVEYING, INC.
27-1/2 N. Main Street
Ashland, Oregon 97520

NOTE: All distances are to the center of the bearing trees at ground level.

10716