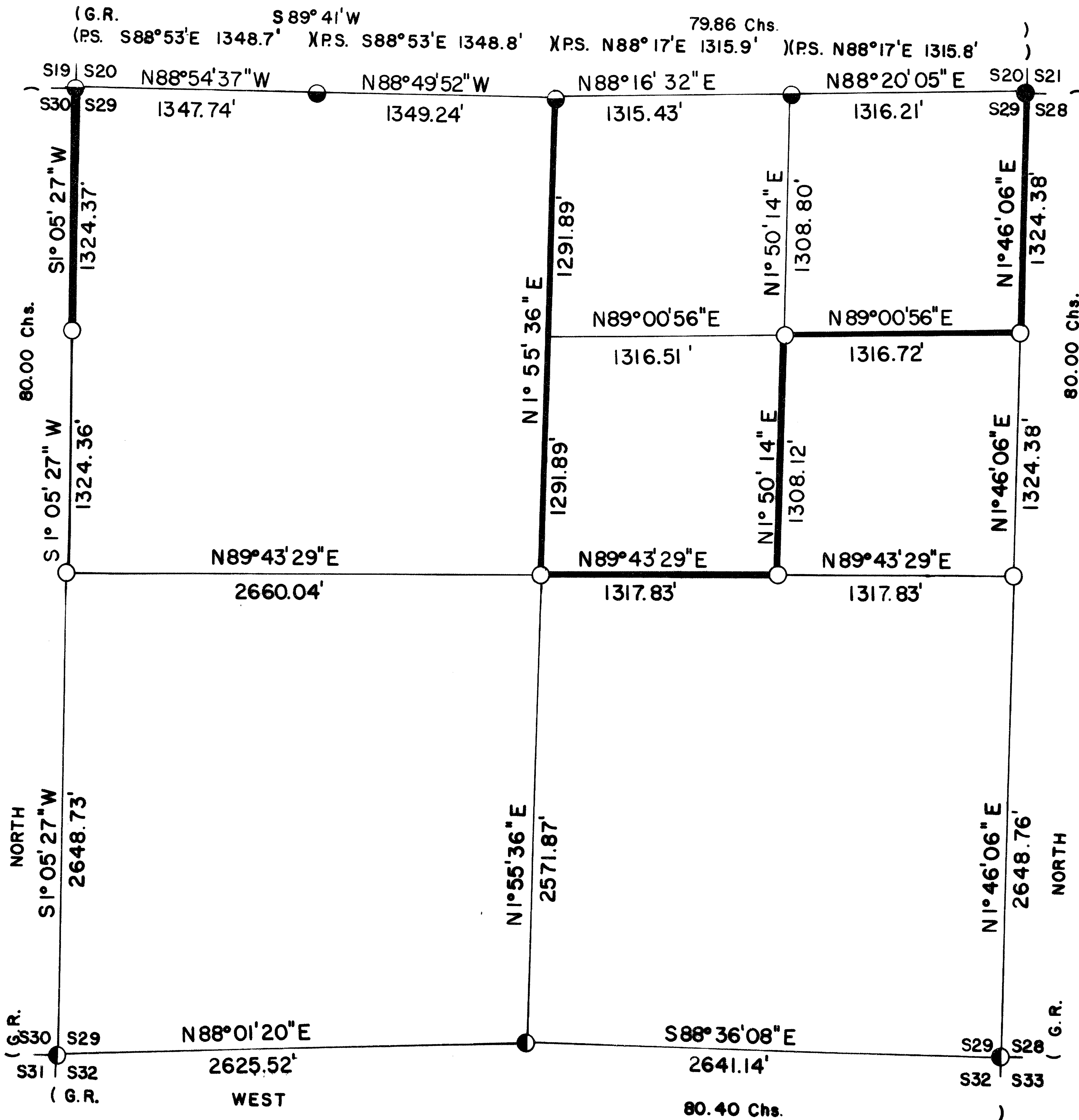
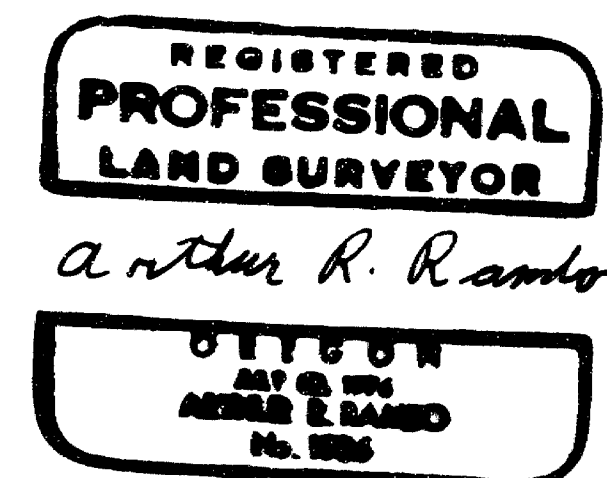


S29 T35S R2E W.M.



CERTIFICATE OF SURVEY

I, ARTHUR R. RAMBO, REGISTRATION No. 1086 REGISTERED PROFESSIONAL LAND SURVEYOR STATE OF OREGON, HEREBY CERTIFY THAT THIS MAP CORRECTLY REPRESENTS A SURVEY MADE BY ME OR UNDER MY DIRECTION IN CONFORMANCE WITH THE LAWS OF THE STATE OF OREGON.



LEGEND

- SET 5/8" BY 30" REBAR WITH 1 1/2 ALUM. CAP
- FOUND STANDARD B.L.M. MONUMENT
- ⊙ FOUND COUNTY MONUMENT
- ⦿ FOUND MONUMENT SET SURVEY No. 4601
- G.R. 1856 GOVERNMENT RECORD
- P.S. PRIVATE SURVEY No. 4601
- LINE POSTED AND BLAZED THIS SURVEY

BASIS OF BEARING

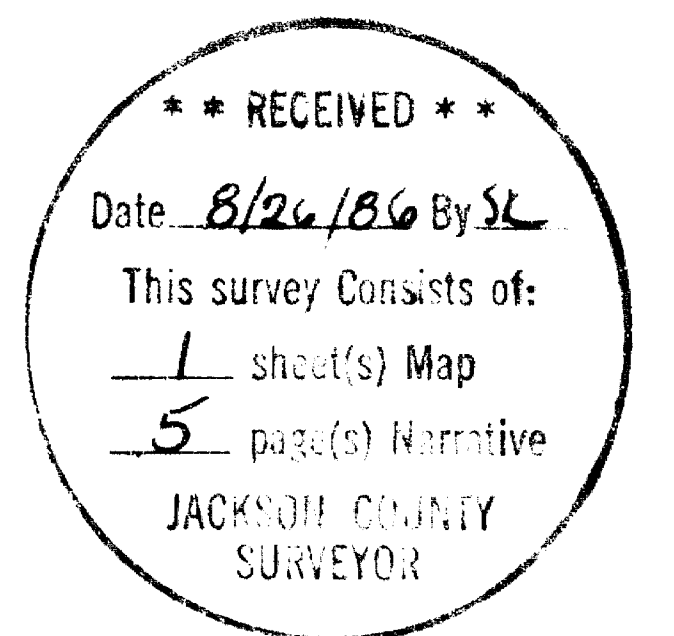
SOLAR OBSERVATION

SCALE

1" = 500'

DATE

25 AUGUST 1986



SURVEY NARRATIVE TO COMPLY WITH O.R.S. 209.250

Location: Section 29, Township 35 South, Range 2 East, Willamette Meridian, Jackson County, Oregon.

Survey for: Medford Resources Corporation
P. O. Box 550
Medford, Oregon 97501

Survey by: Arthur R. Rambo PLS 1086
735 Vista Park Drive
Eagle Point, Oregon 97524

Date: August 26, 1986

Purpose: To mark and post the boundaries of Medford Resources Corporation land in the Northeast quarter of Section 29, and to mark and post the section line common to Sections 28 and 29, and the North half of the North half of the section line common to Sections 29 and 30, as shown on the plat to accompany this narrative.

Procedure: The original survey of Section 29 was completed by Nathaniel Ford under contract #58 dated April 18, 1855. The Southeast, Southwest, and South one-quarter corners have been re-established by the Jackson County Surveyor from original evidence. The Northeast corner has been re-established by the Bureau of Land Management Cadastral Surveyor from original evidence. The Northwest and North one-quarter corners have been re-established by Duane Smeltzer on Survey #4601. The East and West one-sixteenth corners common to Sections 20 and 29 were established by Duane Smeltzer on Survey #4601. The East and West one-quarter corners had not been re-established.

I performed a closed traverse survey along the exterior lines of said section. I found no evidence of the East or West one-quarter corners. I calculated a position for these corners and made another search for original evidence but found none. I set the corners by single proportion measurement. Then I performed a closed traverse of the interior lines needed, beginning and closing on the exterior lines of the section. I set corners and posted lines as shown on the plat to accompany this narrative.

CORNERS FOUND AND ACCEPTED FOR CONTROL:

All measurements to bearing trees are to the center of tree at the base unless otherwise stated.

Section corner common to Sections 28, 29, 32, and 33, Township 35 South, Range 2 East. At the corner location I found a County monument, 2½ inch dia. Bronze Disc exposed one foot, marked:

T358 R2E
S29 | S28
S32 | S33
CS 1973

From which:

- A 7½ inch dia. Oak bears N 72° 55' W 30.3 feet unopened.
- A 15 inch dia. hollow Oak bears N 45° 58' W 96.6 feet with no scribes visible.
- A 6 inch dia. Oak bears N 45° 02' E 24.2 feet unopened.
- A 16½ inch dia. Oak shell bears N 64° 49' E 35.0 feet with no scribes visible.
- A 7½ inch dia. Cedar snag bears S 67° 26' E 46.5 feet marked CS in upper face, BT in lower face.
- A 14 inch dia. Pine bears S 49° 38' W 21.6 feet unopened.

Tax Lot #

Section corner common to Sections 20, 21, 28, and 29, Township 35 South, Range 2 East. At the corner location I found a standard Bureau of Land Management monument, exposed 5 inches in a mound of stone, marked:

T35S R2E
S20 | S21
S29 | S28
 1967

From which:

- An 8 inch dia. Oak bears S 70° 44' W 57.5 feet unopened.
- An 18 inch dia. Cedar bears N 22° 37' W 301.4 feet unopened.
- A 28 inch dia. Pine bears N 1° 16' E 198.2 feet unopened.
- A 26 inch dia. Pine snag bears S 8° 44' E 34.3 feet marked T35SR2ES28 BT all in one face.

East one-sixteenth corner common to Sections 20 and 29, Township 35 South, Range 2 East. At the corner location I found a 1½ inch dia. Alum. cap, exposed 6 inches on a 5/8 inch dia. rebar in a mound of stone, marked:

RS461
 E + 1/16
S 20
 29

From which:

- A 10½ inch dia. Cedar bears N 23° 19' E 29.6 feet marked E1/16S20RS461 BT all in one face.
- A 9 inch dia. Cedar bears S 11° 15' E 40.7 feet with scribes visible in partially healed face.

One-quarter corner common to Sections 20 and 29, Township 35 South, Range 2 East. At the corner location I found a 1½ inch dia. Alum. cap, on a 5/8 inch rebar exposed 12 inches in a mound of stone, marked:

RS461
 1/4
S20
 S29

From which:

- A 10 inch dia. Oak bears N 4° 03' E 8.8 feet with scribe visible in partially healed face.
- A 10½ inch dia. Cedar bears S 39° 02' E 9.6 feet marked 1/4S29RS461 BT all in one face.
- A 16½ inch dia. Oak bears S 13° 59' W 27.9 feet with scribe visible in chopped out face.

West one-sixteenth corner common to Sections 20 and 29, Township 35 South, Range 2 East. At the corner location I found a 1½ inch dia. Alum. cap, on a 5/8 inch dia. rebar exposed 13 inches in a mound of stone, marked:

RS461
 W 1/16
S20
 S29

From which:

- A 10 inch dia. Oak bears N 15° 03' E 43.5 feet with scribe visible in a partially healed face.
- A 15 inch dia. Oak bears S 88° 19' E 19.7 feet unopened.

Section corner common to Sections 19, 20, 29, and 30, Township 35 South, Range 2 East. At the corner location I found a 1½ inch dia. Alum. cap, on a 5/8 inch dia. rebar exposed 7 inches in a mound of stone, marked:

RS461
19 | 20
30 | 29

From which:

- An 8 inch dia. Cedar bears S 43° 20' E 20.8 feet marked S29RS461 BT all in one face.
- A 7½ inch dia. Cedar bears S 9° 37' W 11.1 feet marked S30RS461 BT all in one face.
- A 35½ inch dia. Pine bears S 19° 00' W 31.1 feet with scribes visible in chopped out face.
- A 25½ inch dia. Pine bears N 76° 52' W 22.7 feet marked S19 in chopped out face.
- An 11 inch dia. Madrona bears N 61° 18' W 23.4 feet marked S19RS461 BT bark scribed.
- A 26 inch dia. Fir bears N 49° 25' E 12.4 feet unopened.

Section corner common to Sections 29, 30, 31, and 32, Township 35 South, Range 2 East. At the corner location I found a Jackson County monument, 2½ inch dia. Bronze Disc on a 1½ inch dia. iron pipe exposed 20 inches in a mound of stone, marked:

T35S	R2E	1	
30		29	9
31		32	7
Jackson County 4			

From which:

- A 7 inch dia. Oak bears N 47° 11' E 46.9 feet with unopened upper face and scribe visible in partially healed lower face.
- A 5 inch dia. Oak bears N 49° 48' W 55.7 feet unopened.
- A 12½ inch dia. Pine bears S 35° 58' E 104.8 feet unopened.
- A 9 inch dia. Oak bears S 52° 01' W 106.4 feet with chopped out face, no scribe visible.
- A 5/8 inch dia. rebar bears S 65° 53' W 3.1 feet, exposed 6 inches.

One-quarter corner common to Sections 29 and 32, Township 35 South, Range 2 East. At the corner location I found a Jackson County monument, 2½ inch dia. Bronze Disc on a 3/4 inch dia. rebar exposed 2 inches in a mound of stone, marked:

T35S	R2E	1	
1/4S		29	9
		32	7
Jackson County 4			

From which:

- A 14 inch dia. Oak bears S 11° 58' E 131.7 feet, chopped out face, no scribe visible.
- An 8 inch dia. Oak bears S 22° 27' W 132.9 feet unopened.
- An 8½ inch dia. Oak bears N 48° 18' W 53.7 feet unopened.

CORNERS SET THIS SURVEY:

All measurements to bearing trees are to the center of tree at the base unless otherwise stated. All bearing trees have a brass washer marked LS 1086 nailed to the BT face of tree.

One-quarter corner common to Sections 29 and 30, Township 35 South, Range 2 East. At the corner location I set a 1½ inch dia. Alum. cap, on a 5/8 by 30 inch rebar exposed 12 inches in a mound of stone, marked:

T35S	R2E	
830	+	829
		1/4
LS1086		

From which:

- A 6½ inch dia. Oak bears S 13° 13' W 99.7 feet marked 1/4830 in upper face, BT in lower face.
- A 12 inch dia. Oak bears N 85° 23' E 52.3 feet marked 1/4829 in upper face, BT in lower face.

One-quarter corner common to Sections 28 and 29, Township 35 South, Range 2 East. At the corner location I set a 1½ inch dia. Alum. cap, on a 5/8 by 30 inch rebar exposed 12 inches in a mound of stone, marked:

T358 R2E
1/4
S29 + S28
LS1086

From which:

An 8½ inch dia. Cedar bears N 41° 48' E 12.9 feet marked 1/4S28 in upper face,
BT in lower face.
An 11 inch dia. Oak bears N 26° 59' W 11.3 feet marked 1/4S29 in upper face,
BT in lower face.

North one-sixteenth corner common to Sections 28 and 29, Township 35 South, Range 2 East. At the corner location I set a 1½ inch dia. Alum. cap, on a 5/8 by 30 inch rebar exposed 12 inches in a mound of stone, marked:

T358 R2E
N1/16
S29 + S28
LS1086

From which:

An 8 inch dia. Madrona bears N 80° 17' W 25.2 feet marked N1/16S29 in upper face,
BT in lower face.
A 14½ inch dia. Madrona bears S 38° 50' E 61.0 feet marked N1/16S28 in upper face,
BT in lower face.
Drift fence corner bears S 8° 12' E 62.9 feet.

North one-sixteenth corner common to Sections 29 and 30, Township 35 South, Range 2 East. At the corner location I set a 1½ inch dia. Alum. cap, on a 5/8 by 30 inch rebar exposed 9 inches in a mound of stone, marked:

T358 R2E
N1/16
S30 + S29
LS1086

From which:

A 11½ inch dia. Pine bears N 4° 48' E 32.0 feet marked N1/16S29 in upper face,
BT in lower face.
A 6½ inch dia. Ash bears S 85° 43' W 332.9 feet marked N1/16S30 in upper face,
BT in lower face.

Center one-quarter corner of Section 29, Township 35 South, Range 2 East. At the corner location I set a 1½ inch dia. Alum. cap, on a 1½ inch dia. rebar exposed 9½ inches in a mound of stone, marked:

T358 R2E
S29
C + 1/4
LS1086

From which:

A 7½ inch dia. Oak bears S 23° 52' E 31.5 feet marked C1/4S29 in upper face,
BT in lower face.
An 11 inch dia. Oak bears N 55° 03' E 23.8 feet marked C1/4S29 in upper face,
BT in lower face.

Centereast one-sixteenth corner of Section 29, Township 35 South, Range 2 East. At the corner location I set a 1½ inch dia. Alum. cap, on a 5/8 by 30 inch rebar exposed 10 inches in a mound of stone, marked:

T358 R2E
S29
CE + 1/16
LS1086

From which:

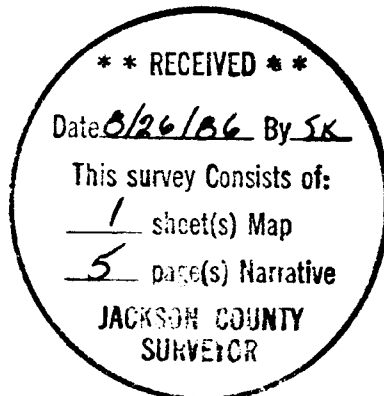
- A 1 1/2 inch dia. Fir bears S 79° 04' E 26.1 feet marked CE1/16S29 in upper face,
BT in lower face.
- A 13 inch dia. Fir bears N 23° 59' W 19.8 feet marked CE1/16S29 in upper face,
BT in lower face.

Northeast one-sixteenth corner of Section 29, Township 35 South, Range 2 East. At the corner location I set a 1 1/2 inch dia. Alum. cap, on a 5/8 by 30 inch rebar exposed 3 1/2 inches in a mound of stone, marked:

T35S R2E
S29
NE + 1/16
LS1086

From which:

- An 11 inch dia. Madrona bears N 89° 47' W 20.1 feet marked NE1/16S29 in upper face,
BT in lower face.
- A 6 1/2 inch dia. Oak bears S 1° 18' E 25.3 feet marked NE1/16S29 in upper face,
BT in lower face.



Arthur R. Rambo

