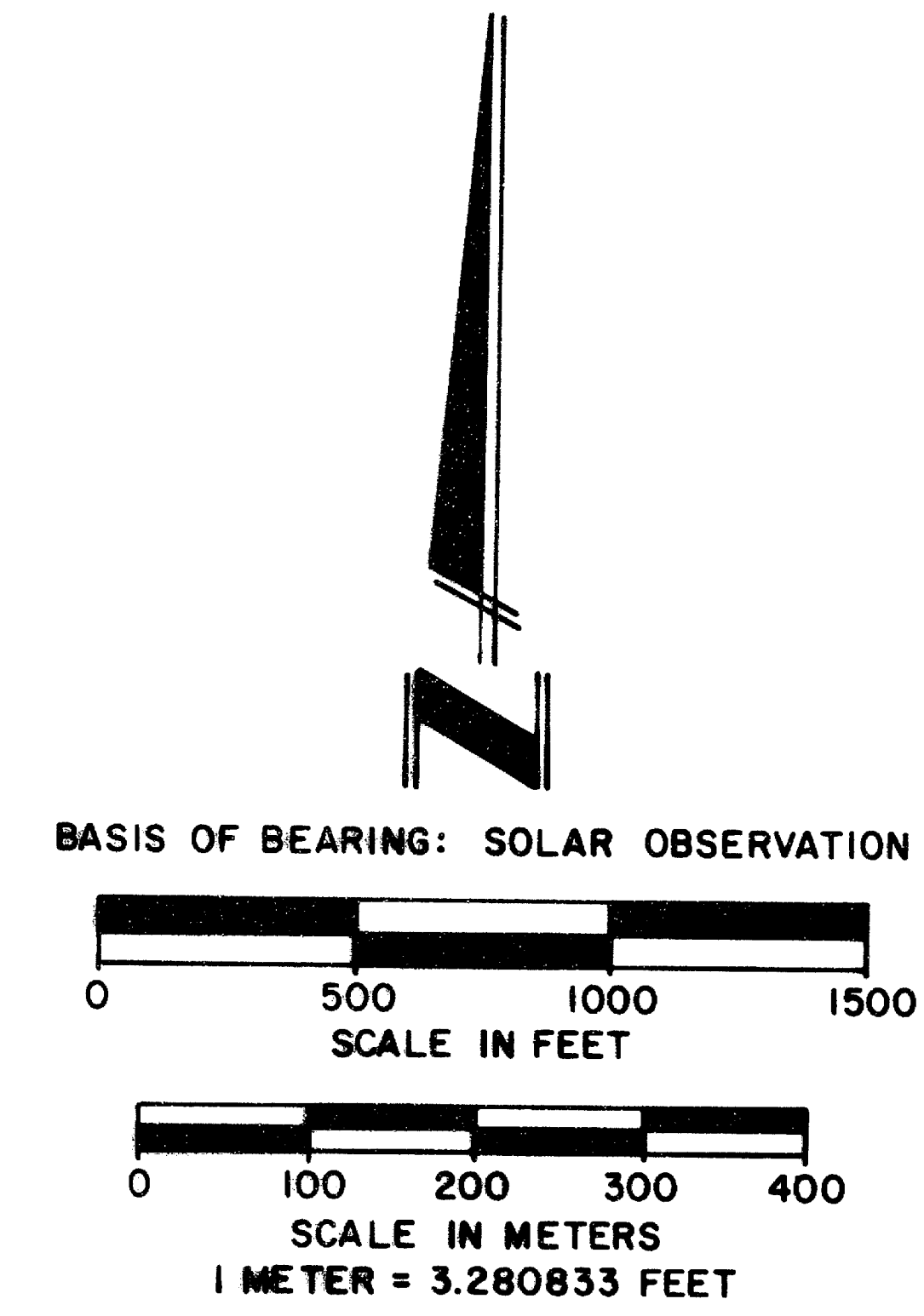
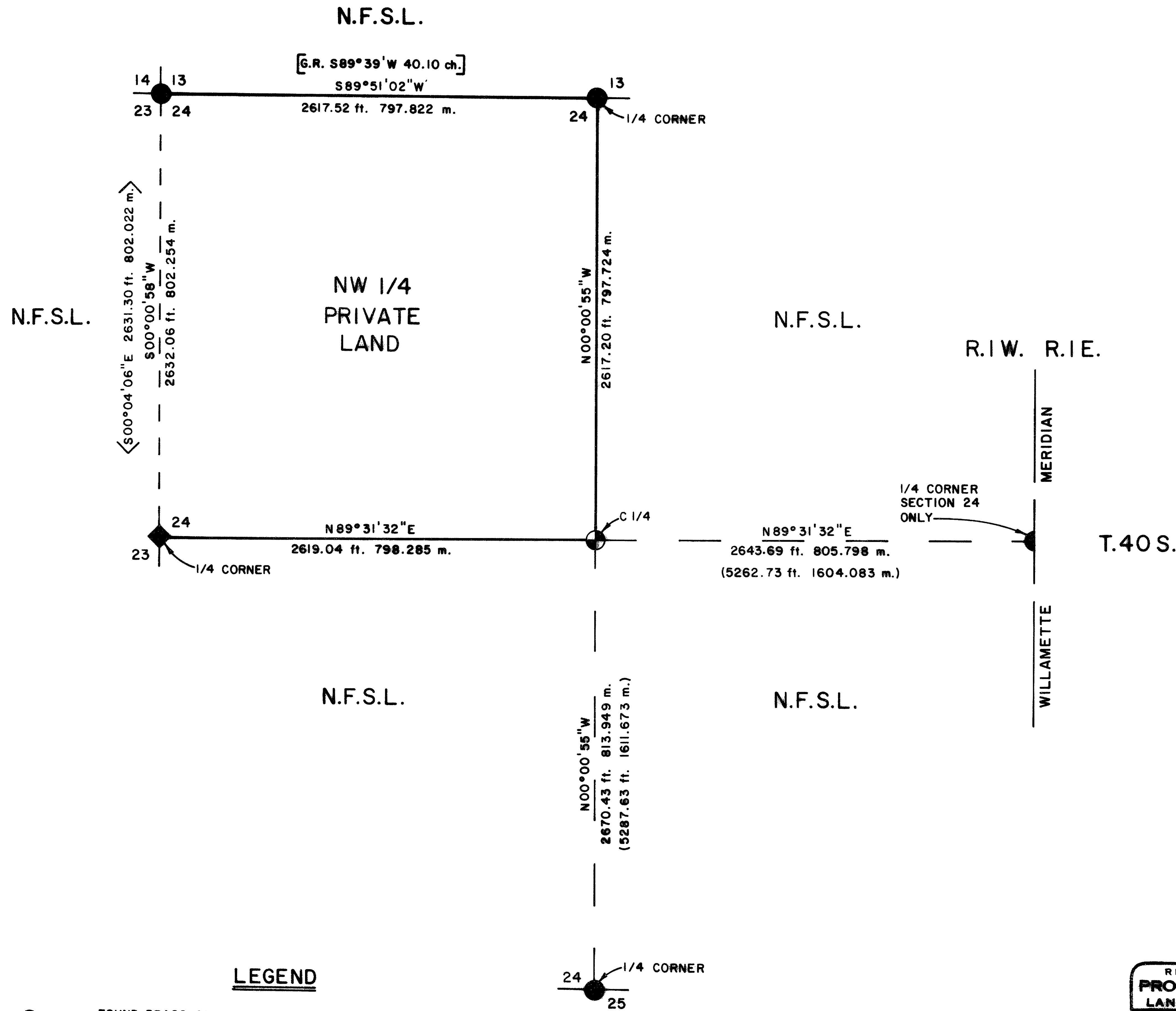


MAP OF SURVEY  
 FOR  
 ROGUE RIVER NATIONAL FOREST  
 P.O. BOX 520  
 MEDFORD, OREGON  
 JULY 23, 1986



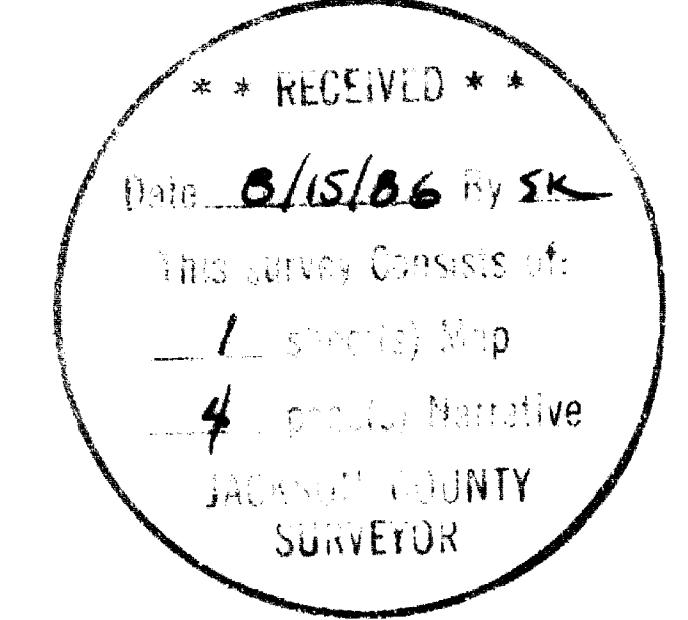
CERTIFICATE OF SURVEY

I, HAROLD L. CENTER, REGISTRATION NO. 1071 REGISTERED PROFESSIONAL LAND SURVEYOR, STATE OF OREGON, HEREBY CERTIFY THAT THIS MAP CORRECTLY REPRESENTS A SURVEY MADE BY ME OR UNDER MY DIRECTION IN CONFORMANCE WITH LAWS OF THE STATE OF OREGON, AT THE REQUEST OF THE U.S. FOREST SERVICE.

LEGEND

- FOUND BRASS CAP MONUMENT SET BY B.L.M. OR COUNTY SURVEYOR.
- ◆ FOUND BRASS CAP MONUMENT SET BY P.L.S. 839. (REFERENCE RECORD SURVEY NO. 9383)
- ⊕ SET 2-1/2 INCH DIAMETER BRASS CAP MONUMENT (SEE ATTACHED NARRATIVE).
- LINE POSTED AND BLAZED THIS SURVEY.
- - - LINE POSTED AND BLAZED RECORD SURVEY 9383.
- LINE CALCULATED FROM TRAVERSE SURVEY.
- [ G.R. ] GOV'T. RECORD RUFUS S. MOORE, 1883.
- < > REF. RECORD SURVEY NO. 9383.
- N.F.S.L. NATIONAL FOREST SYSTEM LANDS

HISTORY OF SURVEYS  
 SEE ATTACHED NARRATIVE.



U.S. DEPARTMENT OF AGRICULTURE FOREST SERVICE	
REGION 6 - ROGUE RIVER NATIONAL FOREST	
DEPENDENT RESURVEY AND SECTION SUBDIVISION SECTION 24, T.40S., R.1W., W.M. JACKSON COUNTY, OREGON PROJECT NO. 96-1	
REVIEWED BY: <i>Harold L. Center</i>	DATE: 8/14/86
REVIEWED BY: <i>David L. King</i>	DATE: 8/12/86

SURVEY NARRATIVE TO COMPLY WITH  
PARAGRAPH 209.250 OREGON REVISED STATUTES

**SURVEY FOR:** Rogue River National Forest  
P O. Box 520  
Medford, OR 97501

**LOCATION:** Section 24, Township 40 South, Range 1 West,  
Willamette Meridian, Jackson County, Oregon.

**PURPOSE:** To subdivide Section 24, set required corner  
points, and mark and post the boundaries separating  
National Forest and private lands within said  
Section 24.

**HISTORY OF SURVEYS:** Original surveys of Section 24 were performed by  
Deputy Surveyor Rufus S. Moore under Contract No.  
475 dated July 3, 1883.

Surveyor Moore changed the corners on the  
Willamette Meridian (east boundary of Section 24)  
to corners of minimum control during surveys under  
Contract No. 637, dated May 15, 1895.

Donald A. Bentz, Registered Oregon Land Surveyor  
No. 839, performed a dependent resurvey of the west  
boundary of Section 24 during Record Survey No.  
9383 dated July 23, 1982.

No other surveys are of record.

**BASIS OF BEARING:** Solar observation

**PROCEDURE:** Prior to commencement of this survey, I performed  
an investigation of all controlling corner points  
for Section 24. The east one-quarter corner was  
remonumented from original evidence by the Bureau  
of Land Management Division of Cadastral Surveys in  
1972. The northwest section corner and the south  
one-quarter corner were remonumented from original  
evidence by the Jackson County Surveyor in 1973.  
The west one-quarter corner was established by pro-  
portionate measurement by Donald A. Bentz, P.L.S.  
No. 839, during Record Survey 9383 dated July 23,  
1982. The north one-quarter corner was remonu-  
mented from original evidence by the Jackson County  
Surveyor in 1985.

With all controlling corners identified, I per-  
formed a control traverse tying all required cor-  
ners to a closed traverse. I calculated the  
subdivision of Section 24 and set the center one-  
quarter corner. Offsets were calculated from ran-  
dom to true line.

Property lines were marked with 6 foot aluminum  
posts with property boundary (54-2) signs attached.  
Trees along the property lines were blazed and  
painted with red USDA timber marking paint.

This survey was performed utilizing a Wild T-2  
Theodolite and Sokkisha Red-2L Distance Meter.

CORNERS ACCEPTED FOR CONTROL

Section corner common to Sections 13, 14, 23 and 24, Township 40 South,  
Range 1 West, W.M.

At the corner point, I found a standard Jackson County Surveyor brass cap monument marked:

T 40 S    R 1W  
 S14 | S13  
 ---+---  
 S23 | S24  
 C.S.  
 1973

And the following accessories:

A 34-inch diameter fir bears S.26°16'W., 53.10 feet distance, with fragmentary scribing visible on a partly healed blaze.

A 20-inch diameter fir bears N.57°09'W., 108.71 feet distance, with scribing BT visible on a partly healed blaze.

A 25-inch diameter fir snag, approximately 20 feet tall, bears N.56°06'E., 27.70 feet distance, with scribing S13 visible on an open blaze.

A 19-inch diameter fir, with a broken top, bears N.71°15'E., 28.60 feet distance, with scribing CS BT visible on a partly healed blaze.

A 16-inch diameter broken stump bears S.30°55'E., 41.32 feet distance, with scribing BT visible on lower blaze.

A 36-inch diameter sawed stump bears S.00°18'E., 25.70 feet distance, with scribing BT visible on lower blaze.

An 8-inch diameter fir bears S.58°55'E., 157.21 feet distance, with scribing  $\overline{\text{40SR1WS24}}$   $\perp$  B visible.

A stump of undetermined size bears S.63°14'W., 33.10 feet distance, with reverse scribing visible on broken piece of wood.

One-quarter corner common to Sections 23 and 24, Township 40 South, Range 1 West, W.M.

At the corner point, I found a 2 1/2 inch diameter brass cap monument marked:

T40S    R1W  
           1/4  
 S23 | S24  
 ---+---  
 R.L.S. 839  
 1982

And the following accessories:

A 12-inch diameter fir bears S.33°20'E., 29.30 feet distance, with scribing S24 BT visible on a partly healed blaze.

A 13-inch diameter fir bears S.58°55'W., 52.14 feet distance, with scribing 1/4S23 BT visible on a partly healed blaze.

One-quarter corner common to Sections 24 and 25, Township 40 South, Range 1 West, W.M.

At the corner point, I found a standard Jackson County Surveyor brass cap monument marked:

T40S R1W  
1/4S  
24  
25  
C. S.  
1973

And the following accessories:

A 40-inch diameter fir bears S.62°36'E., 19.48 feet distance, with scribing 1/4S visible on an open blaze.

A 17-inch diameter fir bears N.47°21'W., 21.25 feet distance, with a healed blaze.

One-quarter corner common to Sections 13 and 24, Township 40 South, Range 1 West, W.M.

At the corner point, I found a Jackson County Surveyor brass cap monument marked:

JACKSON COUNTY  
T 40S R 1W  
1/4S  $\frac{13}{24}$   
1985

And the following accessories:

A 15-inch diameter fir bears S.40°47'W., 43.30 feet distance, with a healed blaze.

A 26-inch diameter fir bears N.56°53'W., 20.10 feet distance, with a healed blaze.

A 33-inch diameter fir stump bears S.04°52'E., 39.80 feet distance, with a healed blaze.

East one-quarter corner common to Section 24 only, Township 40 South, Range 1 West, W.M.

At the corner point, I found a standard Bureau of Land Management Division of Cadastral Surveys brass cap monument marked:

U.S. DEPT. OF INTERIOR  
Unlawful to Disturb  
1/4 |  
S24 |  
T40S |  
R1W |  
1972  
Cadastral Surveys  
Bureau of Land Management

And the following accessories:

A 28-inch diameter fir bears S.78°45'W., 64.20 feet distance, with fragmentary scribing visible on a partly healed blaze.

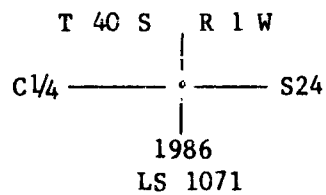
A 25-inch diameter fir bears N.14°40'W., 27.60 feet distance, with fragmentary scribing visible on a partly healed blaze.

A 36-inch diameter sawed fir stump bears S.33°00'W., 98.00 feet distance, with scribing 1/4S visible.

CORNER ESTABLISHED THIS SURVEY

Center one-quarter corner for Section 24, Township 40 South, Range 1 West, Willamette Meridian, Jackson County, Oregon.

At the corner point, I drove a t-iron fence post in the ground. Directly over the top of fence post, I set a 2½ inch diameter iron post with a 2½ inch diameter brass cap monument attached and marked:



And I mark the following accessories:

A 7-inch diameter fir bears N.14°50'W., 60.26 feet distance, scribed C1/4 S24 LS 1071 BT.

A granite stone, exposed 30"x30"x30", bears S.47°58'E., 65.23 feet distance, marked Bx0.

July 23, 1986

HAROLD L. CENTER  
Registered Professional Land Surveyor  
Oregon Certificate No. 1071

