

10613

86-13664

3:44

800
200

SEE PLAT OF MILL POND SUBDIVISION, A PLANNED UNIT DEVELOPMENT, FILED FOR RECORD THE 11th DAY OF JUNE 1986 AT 2:57 O'CLOCK P.M. AND RECORDED IN VOLUME 15 OF PLATS AT PAGE 59 OF RECORDS OF JACKSON COUNTY, OREGON FOR LOT BEARING AND DISTANCES.

EXAMINED AND APPROVED THIS 24th DAY OF

July 1986

James A. Olson
City Surveyor

FILED FOR RECORD THIS 24th DAY OF July
1986 AT 3:44 O'CLOCK P.M. AND

RECORDED IN THE OFFICIAL RECORDS OF JACKSON
COUNTY, OREGON.

Kathleen S. Bostick
County Clerk

Andy A. Poling
Deputy

I, EVERETT L. SWAIN, DULY REGISTERED SURVEYOR
OF THE STATE OF OREGON, DO HEREBY CERTIFY
THAT THIS MAP REPRESENTS A SURVEY MADE
BY ME OR UNDER MY DIRECTION AND THE
MONUMENTS CONFORM TO O.R.S. 92.060.

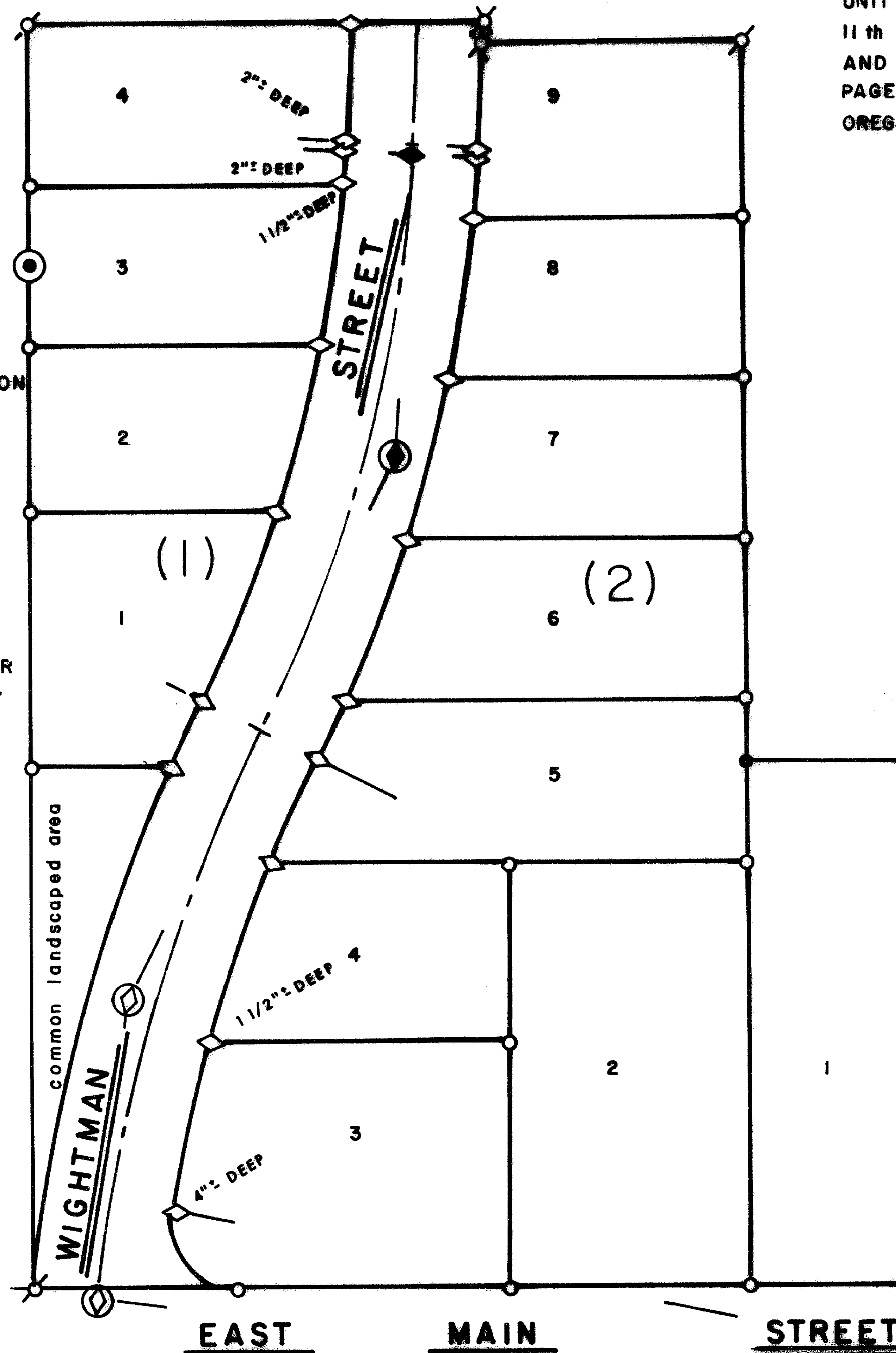
SWAIN SURVEYING, INC.

27 1/2 N. MAIN ST.
ASHLAND, OR 97520

JULY 22, 1986
SCALE: 1" = 50'

REGISTERED
PROFESSIONAL
LAND SURVEYOR

Everett L. Swain
OREGON
JULY 8, 1966
EVERETT L. SWAIN
759



NORTH

MILL POND SUBDIVISION A PLANNED UNIT DEVELOPMENT TO THE CITY OF ASHLAND

LOCATED IN D.L.C. No. 44 & 45 IN THE NW 1/4 OF SEC. 10, TWP. 39S., R. 1E.W.M., JACKSON COUNTY, OREGON

POST MONUMENTATION MAP

- ⊙ MONUMENT PER ORIGINAL SUBDIVISION PLAT
- MONUMENT PER ORIGINAL SUBDIVISION PLAT
- MONUMENT PER ORIGINAL SUBDIVISION PLAT
- ⊗ MONUMENT PER ORIGINAL SUBDIVISION PLAT
- ⊗ MONUMENT PER ORIGINAL SUBDIVISION PLAT
- ◇ SET 1/2 x 24 INCH GALVANIZED IRON PIPE WITH PLASTIC PLUG mkd. SWAIN, & BRASS NAIL
- ◆ SET 5/8 x 30 INCH IRON ROD WITH ALUMINUM CAP mkd. LS 759 1986
- ⊕ SET 1 1/2 x 30 INCH GALVANIZED IRON PIPE WITH 3 INCH BRASS DISK mkd. LS 759 1986, IN MONUMENT CASE
- ⊕ SET 1 x 36 INCH GALVANIZED IRON PIPE WITH 2 1/2 INCH BRASS DISK mkd. SWAIN SURVEYING, IN MONUMENT CASE

LS 759 1986
SURVEY MONUMENT

86-13664

86-13664

39 15 10ms

10613