

DETAIL  
NO-SCALE

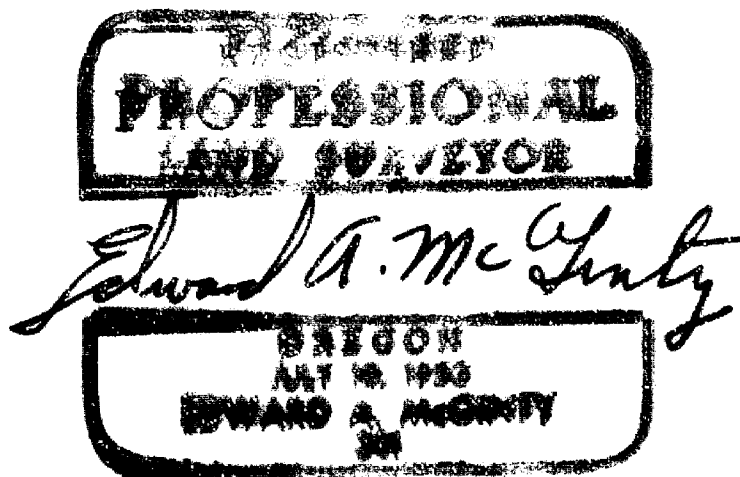
**SURVEY IN SECS. 31, 32, 33 & 34, T. 36 S., R. 2 W. &  
SECS. 3, 4, 5 & 6 T. 37 S., R. 2 W., W.M.  
IN AND FOR JACKSON CO.**

86-52

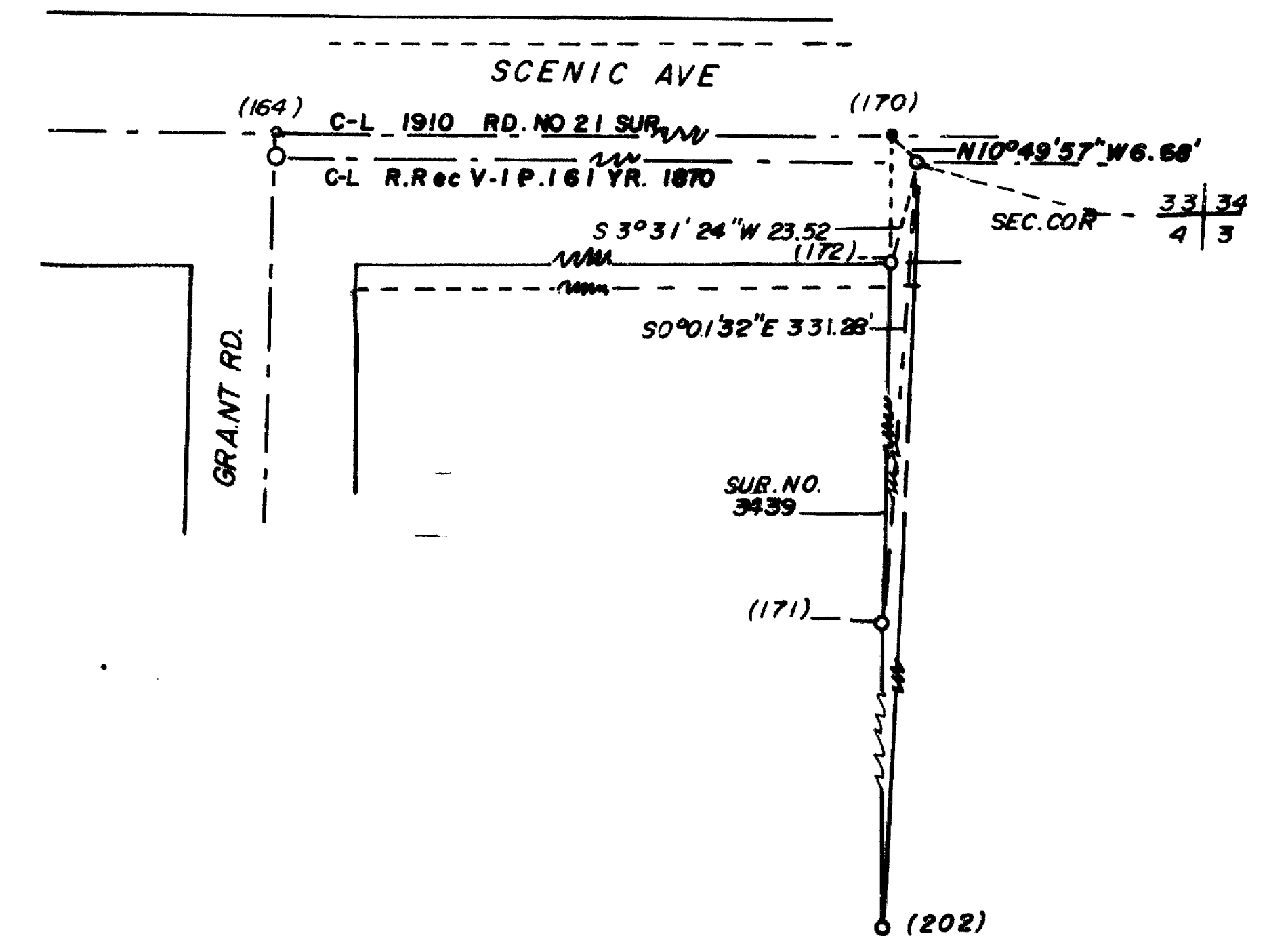
BY: EDWARD A. MCGINTY  
JACKSON CO. SURVEYOR  
COUNTY COURTHOUSE  
MEDFORD, OREGON

JULY 10, 1986  
O (NO)=MONU. SEE NAR  
RP=REFERENCE POINT  
GLO=GOVT LAND OFFICE SURVEY

*N* BASIS OF BEARINGS: SURVEY NO. 10, 596



**\*\* RECEIVED \*\***  
Date 7/14/86 By 86  
This survey consists of:  
1 sheet(s) Map  
4 page(s) Narrative  
JACKSON COUNTY  
SURVEYOR



Survey No. 10601

SURVEY NARRATIVE TO COMPLY WITH PARAGRAPH 209.250  
OREGON REVISED STATUTES

SURVEY FOR: JACKSON COUNTY

SURVEY BY: Edward A. McGinty  
Jackson County Surveyor  
Courthouse Rm. 306  
Medford, OR. 97501

DATE: July 10, 1986

LOCATION: The South half of Sections 31, 32, 33, 34, Township 36 South, Range 2 West and the North half of Sections 3, 4, 5, 6, Township 37 South, Range 2 West, Willamette Meridian, Jackson County, Oregon.

BASIS OF BEARING: Survey No. 10523. Two traverse stations along Upton County Road. South-southeast corner of D.L.C. and pk nail at random point westerly.

PURPOSE OF SURVEY:

To re-establish or locate survey control for county roads and re-establish section and D.L.C. corners in the vicinity of township line of Townships 36 and 37 South, Range 2 West as shown. See official re-established corners as being part of this survey.

PROCEDURE:

With the re-establishment of section corner to Sections 3, 4, 33 and 34, traversed westerly to the quarter corner between Sections 6 and 31 making side ties north and south. By prorating original distance along the township line, found this in close harmony in most conditions to be consistent to other original surveys on the Donation Land Claims. A few obvious discrepancies were found, one being the distance from the Southwest corner to DLC 63 to the Northwest corner of DLC 66 which computes 4.2 chains, 4.5 chains and 4.8 chains. It is evident that the original surveyor may have found an error along the north line of DLC 66 as he failed to call for any of the corners along the south line of DLC 63; a similar problem exists along the north line of DLC 67. There is also evidence that the original surveyor failed or miscalled closing section line at the northwest corner of DLC 51 as the proportion location does not agree with the closing corner.

COUNTY ROADS

SCENIC AVENUE:

On the easterly portion of Scenic Avenue, measured westerly to Grant Road. There are apparently two official center lines, one being the 1870 (also shown on S.P.R.R. map) which runs westerly along the section line and the other being the 1910 road survey as shown on Survey No. 3439. The westerly portion basically follows the 1910 road survey which the official location may vary slightly as

1910 monuments as prior survey in 1906 by C. Jones, Road Record 3, page 308, calls for the centerline on a boundary line common to different ownership.

**GRANT ROAD:**

All calls on monuments on the 1910 road survey was recovered and shown. The official centerline should be verified prior with Jackson County Public Works.

**TOLO ROAD:**

The southerly portion of this road as surveyed in 1910, runs approximately parallel to the west line of DLC 63 and 10 ft. west approximately 297 ft. thence northerly the monument called for at the NW corner of DLC 63. (see first re-establishment for found  $\frac{1}{2}$  ins. pipe).

**SEVEN OAKS ROAD:**

It is evident that the 1910 survey did not follow the west line of DLC 59 but on a straight line from 410+00.1 to the Northwest corner of DLC 59 and bypassed the Northeast corner of DLC 61. The official centerline not searched for and should be verified.

The following numbers inclosed in parentheses and on the map are field or computer station numbers representing a monument or theoretical location:

- (1) The quarter corner between Sections 3 and 34 found a 1 ins. pipe and brass cap as described in official notes, set approx. flush.
- (108) Northwest corner of DLC 59 found a concrete monument.
- (112) Northeast corner of DLC 61 found monument case and concrete with brass disc.
- (154) Corner of Sections 3, 4, 33 & 34 set 1x36 ins. pipe with brass cap flush with pavement (see official records).
- (162) 1910 road survey station 410+20.1 ft., fd.  $\frac{1}{2}$  ins. pipe 15 ins. deep.
- (164) 1910 road survey, Scenic Ave. intersection with Grant Road, fd.  $\frac{3}{8}$  ins. iron pin, 2 ins. deep set over a  $\frac{1}{2}$  ins. iron pipe set 16 ins. deep.
- (165) The Southwest corner of DLC 51 found, see official records.
- (170) Found PK nail by Verlyn Thomas.
- (171) Found  $\frac{5}{8}$  ins. pin set flush, see Survey No. 3439.
- (172) Found  $\frac{5}{8}$  ins. pin (apparently disturbed) approx. 2 ins. high (see survey No. 3439).
- (174) Proportional position of the Northwest corner of DLC 51 from the Northeast corner of DLC 61 to the Southwest corner of DLC 51. Set a 1x36 ins. pipe and brass cap, 12 ins. deep. The closing corner on township line bears  $N0^{\circ}16'40''E$ , 11.38 ft.
- (179) Computer intersection of Township line and center of S.P.R.R. (no monument).
- (201) 1910 road survey monument, fd.  $\frac{1}{2}$  ins. pipe 8 ins. deep.
- (202) Quarter corner between Sections 3 and 4, fd. brass cap and pipe 12 ins. deep. (see official records).
- (220) East-Southeast corner to DLC 48, set a 1 ins. pipe, 36 ins. long with cap set 1 ins. deep (see official records). This corner has long been accepted and established for many years, as shown on at least two surveys.
- (223) Found a partial quartz stone on the east line of DLC 66 with lead center approximately 9 ins. deep being 0.30 ft. East of  $\frac{1}{2}$  ins. pipe set on 1910 road survey. The call to the Northeast DLC 66 from different records varies from 179.0 ft. to 181.5 ft. A distance of 179.52 ft. was held for this location which agrees also with Survey No. 5359. From said stone as witness corner to NE corner of DLC 66.

- (225) Northeast corner of DLC 66 falls in residence. A search was made for monument and copper line. Apparently construction may have destroyed any monument. (See points 223 & 320 as witness corners.)
- (229) 1910 road survey PI Station 411+22.1, after digging and proding for stone and RP easterly, set 5/8x24 ins. iron pin flush. Record distance from 1910 PI southerly.
- (239) Southwest corner of DLC 62 found iron pin 1 ins. diam., 3 ins. deep, set and shown on Survey No. 3474 and shown on surveys 3686, 4037 and 4449. This location was further varified by additional surveys and now being commonly accepted as the most practical location. It also agrees closely with the original record south and near proportional distance from along the DLC 63 line. Reference for Southwest corner of DLC 62 (see official records).
- (253) Quarter corner between Sections 31 and 6, fd. 1 ins. iron pipe with plastic cap set flush at a fence line intersection. For further description see official records.
- (254) Southwest corner of DLC 63, fd. monument case and brass cap set in concrete at intersection of Tolo and Scenic Roads from which 1910 road survey monument bears N89°41'09"W, 9.99 ft.
- (257) Northwest corner of DLC 63 fd. monument case and brass disc set in concrete. It is evident that this is the location identical to the 1910 road survey angle point which was an iron pipe 1/2 ins. diam. (see first re-establishment and road notes.)
- (258) Southeast corner of DLC 62 fd. 1 ins. pipe with disc set flush. (see official notes).
- (259) 1910 road survey, fd. a pipe 1/2 ins. diam. 8 ins. deep from the southwest corner of DLC 63 brs. S89°41'09"E, 9.99 ft.
- (264) Northeast corner of DLC 63, fd. monument case with brass disc set in concrete. (see official records).
- (272) Northwest corner of DLC 47 set a pipe 1 ins. diam., 36 ins. long with brass cap flush. Identical to corner as shown on Survey No. 5359.
- (278) Traverse point, 1 ins. diam. pipe, 36 ins. long with plastic cap mkd. Jackson Co. Surveyor flush with surface. This point is in a north-south fence North 1.2 ft. of fence corner. This fence was identified to Vogel (residence of over 30 yrs.) by previous owner of many years as being on the west line of DLC 64.
- (300) Quarter corner for sections 33 and 4, a proportional position from which a witness corner (approx. on section line) brs. North 129.82 ft.
- (301) Corner of Sections 4,5,32 and 33, a proportional position form which a witness corner (approx. on the section line) brs. North 303.45 ft.
- (302) Quarter corner for Sections 32 and 5 a proportional position from which a witness corner (approx. on the section line) brs. North 298.25 ft.
- (303) Corner of Sections 5,6,31 and 32, set an iron pipe 1 ins. diam. 36 ins. long with brass cap (see official records).
- (305) Set iron rod 5/8 ins. diam., 24 ins. long, flush with edge of gutter being section line and approx. west line of DLC 67.
- (306) Northwest corner of DLC 67, set 1 ins. diam. pipe, 36 ins. long, approx. flush. (see official records).
- (309) Southeast corner of DLC 63 set a 1 ins. pipe, 36 ins. long, with brass cap, flush with pavement. (see official records).
- (310) Southeast corner of DLC 64, set a 1 ins. diam. pipe, 36 ins. long with brass cap set flush with pavement, at proportional distance between the Northwest and the Southwest corner of DLC 63. (see official records.)
- (312) Closing corner of Northwest corner of DLC 51, set a 5/8 ins. iron pin, 24 ins. long, 2 ins. deep from the proportional corner brs. S0°16'40"W, 11.38 ft.

- (314) Witness corner to quarter corner of Sections 33 and 4, set 5/8 ins. diam. iron pin, 24 ins. long with plastic cap mkd. Jackson C.S., flush with pavement.
- (317) Set 5/8 ins. diam. iron pin, 24 ins. long with plastic cap mkd. Jackson C.S. flush with pavement on the center line of 1910 road survey - 1870 road or Scenic road.
- (320) A witness corner to the Northeast corner of DLC 66, set a 1 ins. diam. pipe, 36 ins. long with brass cap 2 ins. deep, from said Northeast corner brs. N89°59'59"E, 64.51 ft.
- (321) Witness corner to quarter corner to Sections 32 and 5, see (302), set 5/8 ins. diam. iron pin, 24 ins. long, with plastic cap, set flush with pavement. (see official records).
- (322) Witness corner to Sections 4,5,32 and 33, set 5/8 ins. diam. iron pin 24 ins. long, with plastic cap mkd. Jackson C.S., flush with pavement. (see (301) and official notes).

\*\* RECEIVED \*\*  
Date 7/14/86 By SK  
This survey consists of:  
1 sheet(s) Map  
4 page(s) Narrative  
JACKSON COUNTY  
SURVEYOR

REGISTERED  
PROFESSIONAL  
LAND SURVEYOR  
*Edward A. McGinty*  
OREGON  
MAY 10, 1953  
EDWARD A. MCGINTY  
301