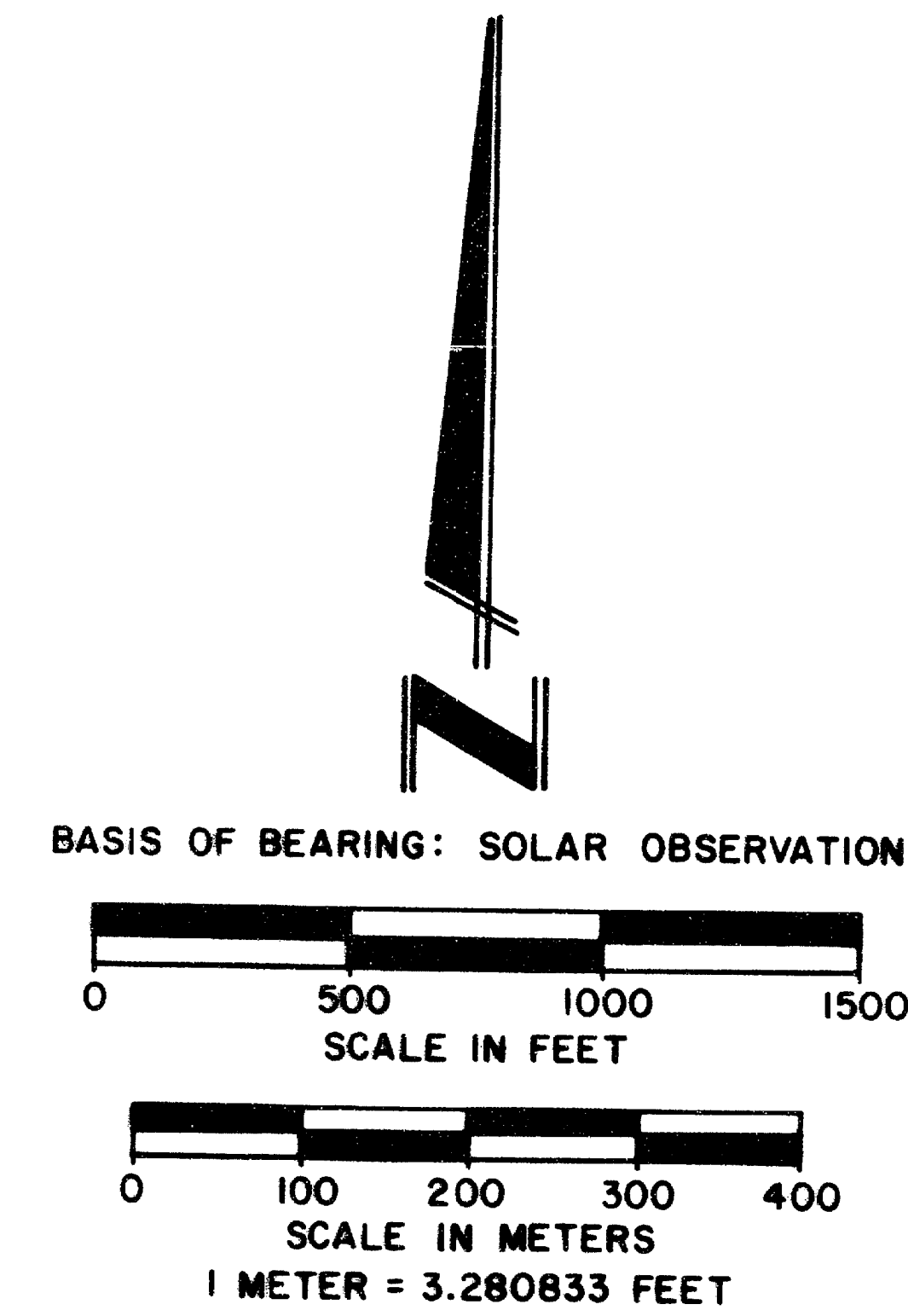
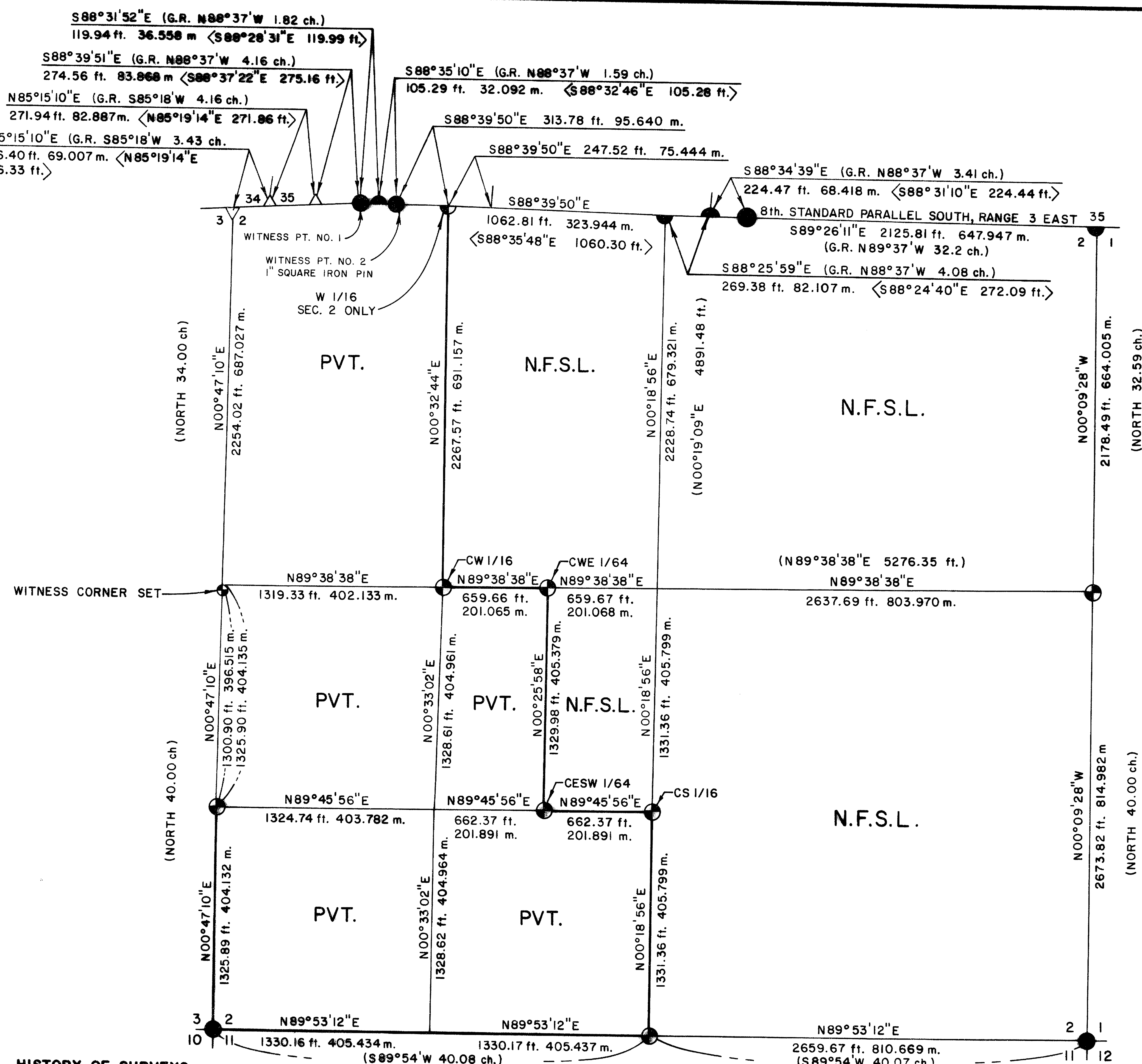


MAP OF SURVEY  
FOR  
ROGUE RIVER NATIONAL FOREST  
P.O. BOX 520  
MEDFORD, OREGON  
APRIL 7, 1986



CERTIFICATE OF SURVEY

I, HAROLD L. CENTER, REGISTRATION NO. 1071 REGISTERED PROFESSIONAL LAND SURVEYOR, STATE OF OREGON, HEREBY CERTIFY THAT THIS MAP CORRECTLY REPRESENTS A SURVEY MADE BY ME OR UNDER MY DIRECTION IN CONFORMANCE WITH LAWS OF THE STATE OF OREGON, AT THE REQUEST OF THE U.S. FOREST SERVICE.

REGISTERED  
PROFESSIONAL  
LAND SURVEYOR  
*Harold L. Center*  
OREGON  
HAROLD L. CENTER  
JULY 30, 1985  
No. 1071

\*\* RECEIVED \*\*  
Date: 6/3/86 By: *SK*  
This survey consists of:  
- 1 sheet(s) Map  
- 7 page(s) Narrative  
JACKSON COUNTY  
SURVEYOR

U.S. DEPARTMENT OF AGRICULTURE  
FOREST SERVICE  
REGION 6 ROGUE RIVER NATIONAL FOREST  
DEPENDENT RESURVEY  
AND  
SECTION SUBDIVISION  
SECTION 2, T.36 S., R.3E., W.M.  
JACKSON COUNTY, OREGON  
PROJECT 86-7  
REVIEWED BY: *John D. Bell* DATE: *5/20/86*  
REVIEWED BY: *David Loring* DATE: *5/20/86*

HISTORY OF SURVEYS

ESTABLISHMENT OF THE EIGHTH STANDARD PARALLEL SOUTH, RANGE 3 EAST, WAS PERFORMED BY DEPUTY SURVEYOR NATHANIEL FORD UNDER CONTRACT NO. 58 DATED APRIL 18, 1855.  
SUBDIVISION OF TOWNSHIP 36 SOUTH, RANGE 3 EAST, AND RETRACEMENT OF PORTIONS OF THE EIGHTH STANDARD PARALLEL SOUTH, RANGE 3 EAST, WAS PERFORMED BY DEPUTY SURVEYOR RUFUS S. MOORE UNDER CONTRACT NO. 475 DATED JULY 3, 1883.  
DEPUTY COUNTY SURVEYOR C.Z. BOYDEN RETRACED PORTIONS OF THE EIGHTH STANDARD PARALLEL SOUTH, RANGE 3 EAST, PRIOR TO CONSTRUCTION OF WILLOW CREEK RESERVOIR AND ESTABLISHED WITNESS POINTS TO REFERENCE CORNER POINTS ON THE EAST AND WEST SIDES OF WILLOW CREEK RESERVOIR.  
A DEPENDENT RESURVEY OF THE EIGHTH STANDARD PARALLEL SOUTH, RANGE 3 EAST, WAS PERFORMED BY B.L.M. CADASTRAL SURVEYOR RONALD SHIRLER DURING 1977 AND 1978 WITH THE RESULTS OF THAT SURVEY OFFICIALLY APPROVED ON MAY 26, 1983.  
NO OTHER SURVEYS OF RECORD WERE NOTED.

- LEGEND**
- FOUND STANDARD B.L.M. OR COUNTY SURVEYOR BRASS CAP MONUMENT, UNLESS OTHERWISE NOTED.
  - ⊙ SET 2-1/2" DIA. X 30" LG. IRON POST WITH 2-1/2" DIA. BRASS CAP UNLESS OTHERWISE NOTED.
  - △ COMPUTED POINT ONLY, NO MONUMENT, SITUATED BELOW HIGH WATER.
  - PROPERTY LINES MARKED AND POSTED THIS SURVEY.
  - SECTION LINES CALCULATED FROM TRAVERSE SURVEY.
  - < > DENOTES R.S. 8306 RECORD.
  - ( ) DENOTES GOV'T RECORD.
  - N.F.S.L. DENOTES NATIONAL FOREST SYSTEM LANDS.

SURVEY NARRATIVE TO COMPLY WITH  
PARAGRAPH 209.250 OREGON REVISED STATUTES

**SURVEY FOR:** Rogue River National Forest  
P. O. Box 520  
Medford, OR 97501

**LOCATION:** Section 2, Township 36 South, Range 3 East,  
Willamette Meridian, Jackson County, Oregon.

**BASIS OF BEARING:** Solar observation - utilized bearing basis from  
Record Survey No. 9927.

**PURPOSE:** To monument property corners and mark and post  
mutual property lines separating private and  
National Forest lands.

**PROCEDURE:** Prior to commencement of this survey I performed an  
investigation of the controlling corner points  
required for subdivision of this section. The  
northwest section corner falls within the confines  
of Willow Lake. This corner was referenced by wit-  
ness points on the east and west banks of the lake.  
The north one-quarter corner and the northeast sec-  
tion corner were reestablished by the BLM during a  
1978 survey of the 8th Standard Parallel, Range 3  
East. The southeast and southwest section corners  
had been remonumented from original evidence by the  
BLM. The west, east, and south one-quarter corners  
had not been recovered.

Utilizing my control established during Record  
Survey No. 9927 for the south line of Section 35,  
Township 35 South, Range 3 East, I began this sur-  
vey at witness point No. 1 situated on the easterly  
bank of Willow Reservoir and ran a traverse coun-  
terclockwise around the perimeter of Section 2. I  
closed this traverse to my previously established  
control at the northeast corner of Section 2.  
Along my traverse line I made ties to blazed trees  
and topography. From this data I determined search  
areas for the missing one-quarter corners.  
Extensive searches were made for each corner  
without success. Although I was able to recover  
numerous blazed trees, several of which dated to  
the original survey, I was unable to positively  
identify a locus of line acceptable for restoration  
of the missing corner point. Being unable to  
locate any evidence of the original corner points,  
I reestablished the missing corner points by pro-  
portional measurement.

With the controlling section and one-quarter sec-  
tion corner points reestablished, I ran a traverse  
adjacent to the private property boundary within  
Section 2, closing my survey to my perimeter  
control. From this data corner points were monu-  
mented and property lines posted, as shown on the  
attached map.

Property lines were posted with metal posts with  
National Forest boundary signs attached. Trees  
along the line were blazed and painted with red  
timber marking paint.

**EQUIPMENT UTILIZED IN SURVEY:** This survey was performed utilizing a  
Wild T-2 Theodolite and Leitz Red 2-L Electronic  
Distance Meter.

Corner Points Accepted For Control

Special Note: The following corner points were described within Record Survey No. 9927, dated March 14, 1984. These corner points were found as described within that survey and will not be redescribed within this survey.

Witness point No. 1, situated on the east side of Willow Creek Reservoir originally established by Surveyor C. Z. Boyden (Deputy County Surveyor) and remonumented by the BLM in 1977.

West-west one/sixty-fourth corner Section 35, Township 35 South, Range 3 East.

Witness point No. 2 situated on the east side of Willow Creek Reservoir originally established by Surveyor C. Z. Boyden (Deputy County Surveyor) and remonumented by the BLM in 1977.

One-quarter corner Section 2, Township 36 South, Range 3 East.

One-quarter corner Section 35, Township 35 South, Range 3 East.

Angle point on the 8th Standard Parallel South, Range 3 East, for Section 35, Township 35 South, Range 3 East, and Section 2, Township 36 South, Range 3 East.

The following corner points were accepted as Controlling Corners for this survey and are described as follows:

Section corner to Sections 2, 3, 10 and 11, Township 36 South, Range 3 East.

At the corner point I found a standard Bureau of Land Management brass cap monument marked:

U.S. Dept. of Interior  
Unlawful to Disturb  
T36S R3E

S3	S2
S10	S11

1966  
Cadastral Surveys  
Bureau of Land Management

And the following references:

A 23-inch diameter fir bears N.57°51'E., 18.70 feet distance, healed blaze.

A 22-inch diameter fir bears S.34°46'E., 53.70 feet distance, healed blaze.

An 11-inch diameter fir bears S.21°20'W., 21.70 feet distance, healed blaze.

An 11-inch diameter fir bears N.41°16'W., 14.10 feet distance, healed blaze.

A 24-inch diameter fir bears N.16°03'W., 19.70 feet distance, healed blaze.

Section corner to Sections 1, 2, 11 and 12, Township 36 South, Range 3 East.

At the corner point I found a standard Bureau of Land Management brass cap monument marked:

U.S. Dept. of Interior  
Unlawful to Disturb  
T36S R3E

S2	S1
S11	S12

1962  
Cadastral Surveys  
Bureau of Land Management

And the following references:

A 25-inch diameter fir bears N.65°15'W., 13.10 feet distance, healed blaze.

A 12-inch diameter fir bears N.32°20'E., 30.90 feet distance, healed blaze.

A 22-inch diameter fir bears S.48°09'E., 11.50 feet distance, open blaze with no definite scribe marks visible.

A 15-inch diameter fir bears S.32°10'E., 43.70 feet distance, healed blaze.

A 12-inch diameter pine bears S.32°02'W., 28.20 feet distance, healed blaze.

Section corner (closing) to Sections 1 and 2, Township 36 South, Range 3 East, and Section 35, Township 35 South, Range 3 East.

At the corner point I found a standard Bureau of Land Management brass cap monument marked:

U.S. Dept. of Interior  
Unlawful to Disturb  
T35S

S35	
S2	S1
C	C

T36S R3E  
Bureau of Land Management  
Cadastral Surveys

And the following references:

A 19-inch diameter fir bears S.14°11'E., 26.30 feet distance, healed blaze.

An 8-inch diameter fir bears S.52°28'W., 24.00 feet distance, open blaze with scribe marks visible.

Section corner to Sections 35 and 36, Township 35 South, Range 3 East, and Section 1, Township 36 South, Range 3 East.

At the corner point I found a standard Bureau of Land Management brass cap monument marked:

U.S. Dept. of Interior  
Unlawful to Disturb  
T35S

S35	S36
S1	

T36S  
1977  
Bureau of Land Management  
Cadastral Surveys

Angle point on the 8th Standard Parallel South, Range 3 East for Section 36, Township 35 South, Range 3 East, and Section 1, Township 36 South, Range 3 East.

At the corner point I found a standard Bureau of Land Management brass cap monument marked:

U.S. Dept. of Interior  
Unlawful to Disturb  
T35S R3E  
  
A.P.  $\frac{S36}{S1}$   
  
T36S  
1977  
Bureau of Land Management  
Cadastral Surveys

And the following references:

A 25-inch diameter pine bears N.60°40'W., 49.30 feet distance, healed blaze.

A 13-inch diameter pine bears S.62°09'E., 26.20 feet distance, healed blaze.

A 48-inch diameter pine bears S.52°45'W., 91.90 feet distance, open blaze with scribe marks visible.

CORNERS ESTABLISHED THIS SURVEY

West one-sixteenth corner to Section 2, Township 36 South, Range 3 East.

At the corner point I set a 2 1/2 inch diameter galvanized iron post with a 2 1/2 inch diameter brass cap marked:

T35S R3E  
  
W 1/16  $\frac{S2}{S2}$   
  
T36S  
1986  
LS1071

And the following references:

A 7-inch diameter fir bears S.22°17'E., 12.20 feet distance, scribed 'X' BT.

A 13-inch diameter fir bears S.24°04'W., 16.90 feet distance, scribed W 1/16 S2 LS1071 BT.

One-quarter corner to Sections 2 and 3, Township 36 South, Range 3 East.

This corner point falls within the water impoundment area of Willow Lake. Although the corner point is occupiable during times of low water levels, I choose to monument this corner point by use of a witness corner established S.00°47'10"W., 25.00 feet distance.

At the point for the witness corner I set a 2 1/2 inch diameter galvanized iron post with a 2 1/2 inch diameter galvanized iron post with a 2 1/2 inch diameter brass cap marked:

W. C.  
T36S R3E  
1/4  
↑  
S3 S2  
1986  
LS1071

And the following references:

A 12-inch diameter fir bears S.11°27'E., 46.49 feet distance, scribed  
W.C.1/4S3 LS1071 BT.

A 14-inch diameter fir bears S.37°56'W., 36.21 feet distance, scribed  
W.C.1/4S3 LS1071 BT.

South one-sixteenth corner to Sections 2 and 3, Township 36 South, Range 3  
East.

At the corner point I set a 2 1/2 inch diameter galvanized iron post with a 2 1/2  
inch diameter brass cap marked:

T36S    R3E  
S 1/16  
S3 | S2  
1986  
LS 1071

And the following references:

A 19-inch diameter fir bears S.56°05'W., 30.61 feet distance, scribed  
S1/16S3 LS1071 BT.

A 12-inch diameter fir bears S.48°42'E., 10.81 feet distance, scribed  
S1/16S2 LS1071 BT.

One-quarter corner to Sections 2 and 11, Township 36 South, Range 3 East.

At the corner point I cemented a 3-inch diameter brass disk in bedrock and  
marked cap:

T36S    R3E  
1/4  $\frac{S2}{S11}$   
1986  
LS1071

And the following references:

A 14-inch diameter fir bears N.06°38' E., 28.43 feet distance, scribed  
1/4S2LS1071 BT.

A 13-inch diameter cedar bears S.46°56'W., 37.96 feet distance, scribed  
1/4S11LS1071 BT.

One-quarter corner to Sections 1 and 2, Township 36 South, Range 3 East.

At the corner point I set a 2 1/2 inch diameter galvanized iron post with a 2 1/2  
inch diameter brass cap marked:

T36S    R3E  
1/4  
S2 | S1  
1986  
LS 1071

And the following references:

A 9-inch diameter cedar bears S.84°52'W., 50.75 feet distance, scribed  
1/4S2LS1071 BT.

A 9-inch diameter fir bears N.32°03'E., 5.10 feet distance, scribed 1/4S1 LS1071 BT.

Center west one-sixteenth corner Section 2, Township 36 South, Range 3 East.

At the corner point I set a 2 1/2 inch diameter galvanized iron post with a 2 1/2 inch diameter brass cap marked:

T36S R3E  
W 1/16  
C ——— C  
  
S2  
1986  
LS 1071

And the following references:

A 5-inch diameter oak bears N.30°21'E., 24.89 feet distance, CW 1/16 S2 LS1071 BT.

A 21-inch diameter fir bears S.52°01'E., 41.65 feet distance, CW 1/16S2 LS1071 BT.

Center-east-west one/sixty-fourth corner Section 2, Township 36 south, Range 3 East.

At the corner point I set a 2 1/2 inch diameter galvanized iron post with a 2 1/2 inch diameter brass cap marked:

T36S R3E  
C-E-W  
|  
1/64 ——— S2  
|  
1986  
LS 1071

And the following references:

A 15-inch diameter fir bears N.67°26'W., 18.00 feet distance, scribed CEW1/64S2 LS1071 BT.

An 11-inch diameter oak bears N.49°13'E., 54.90 feet distance, scribed CEW1/64S2 LS1071 BT.

Center east-southwest one/sixty-fourth corner Section 2, Township 36 South, Range 3 East.

At the corner I set a 2 1/2 inch diameter galvanized iron post with a 2 1/2 inch diameter brass cap marked:

T36S R3E  
CE - SW  
|  
1/64 ——— S2  
|  
LS1071  
1986

And the following references:

An 8-inch diameter fir bears N.35°22'W., 18.39 feet distance, scribed 'X' BT.

A 14-inch diameter fir bears N.28°51'E., 19.60 feet distance, scribed CESW1/64S2 LS1071 BT.

Center south one-sixteenth corner Section 2, Township 36 South, Range 3 East.

At the corner point I set a 2 1/2 inch diameter galvanized iron post with a 2 1/2 inch diameter brass cap marked:

T36S R3E  
C  
S 1/16 | S2  
C  
1986  
LS1071

And the following references:

A 19-inch diameter fir bears N.30°07'W., 18.40 feet distance, scribed CS1/16S2 LS1071 BT.

A 6-inch diameter cedar bears S.55°03'E., 3.75 feet distance, scribed 'X' BT.

March 7, 1986

HAROLD L. CENTER  
Registered Professional Land Surveyor  
Oregon Certificate No. 1071

