

R. 2 E.

MAP OF SURVEY

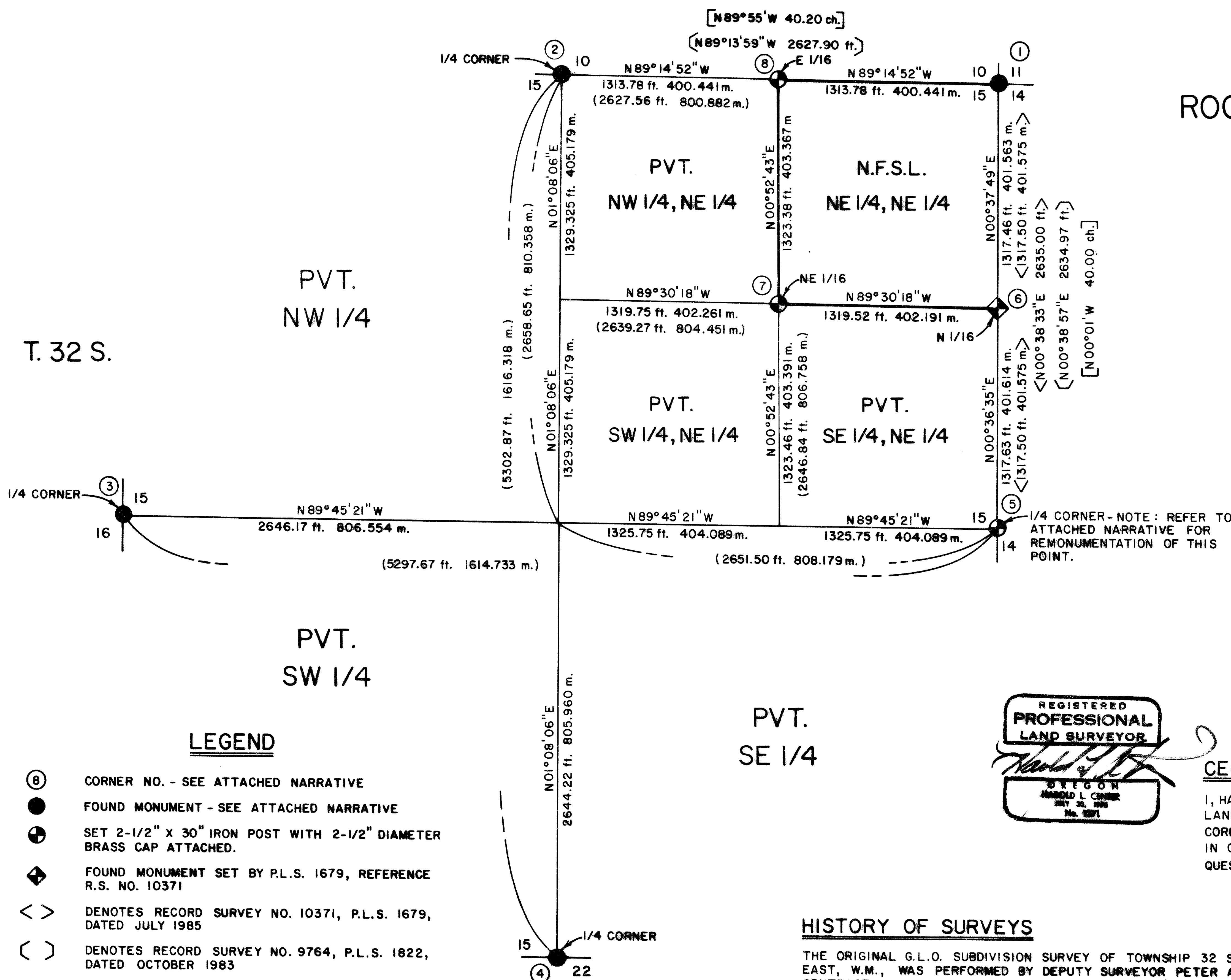
FOR

ROGUE RIVER NATIONAL FOREST

P.O. BOX 520

MEDFORD, OREGON

APRIL 30, 1986



PVT. NW 1/4

PVT. NW 1/4, NE 1/4

N.F.S.L. NE 1/4, NE 1/4

PVT. SW 1/4, NE 1/4

PVT. SE 1/4, NE 1/4

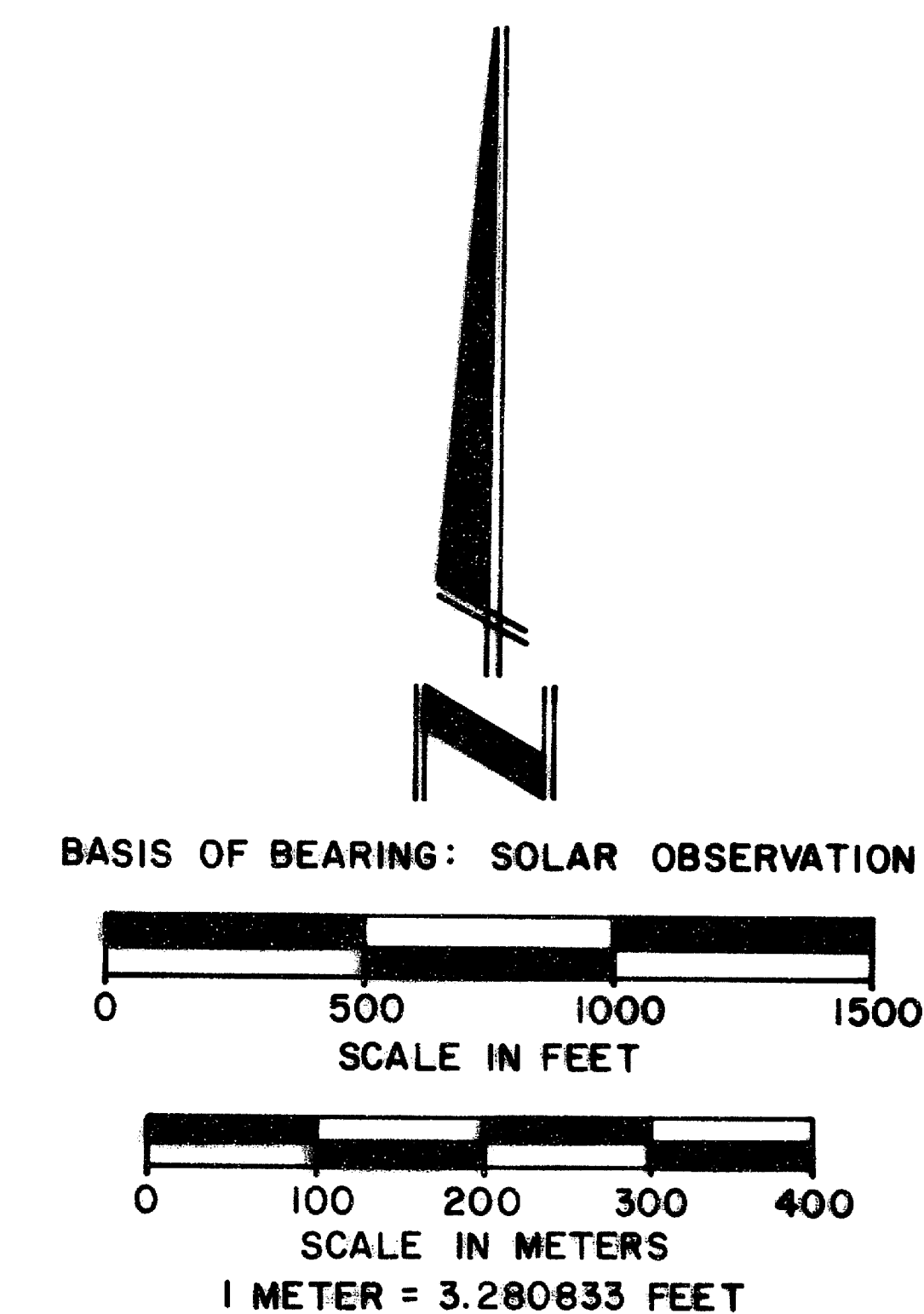
PVT. SW 1/4

PVT. SE 1/4

T. 32 S.

LEGEND

- ⑥ CORNER NO. - SEE ATTACHED NARRATIVE
- FOUND MONUMENT - SEE ATTACHED NARRATIVE
- ⊕ SET 2-1/2" X 30" IRON POST WITH 2-1/2" DIAMETER BRASS CAP ATTACHED.
- ◆ FOUND MONUMENT SET BY P.L.S. 1679, REFERENCE R.S. NO. 10371
- < > DENOTES RECORD SURVEY NO. 10371, P.L.S. 1679, DATED JULY 1985
- ( ) DENOTES RECORD SURVEY NO. 9764, P.L.S. 1822, DATED OCTOBER 1983
- [ ] DENOTES GOV'T. RECORD - PETER APPLIGATE, APRIL 25, 1896
- PROPERTY LINE MARKED AND POSTED
- LINE CALCULATED FROM TRAVERSE SURVEY
- N.F.S.L. NATIONAL FOREST SYSTEM LANDS
- PVT. PRIVATE LANDS



CERTIFICATE OF SURVEY

I, HAROLD L. CENTER, REGISTRATION NO. 1071 REGISTERED PROFESSIONAL LAND SURVEYOR, STATE OF OREGON, HEREBY CERTIFY THAT THIS MAP CORRECTLY REPRESENTS A SURVEY MADE BY ME OR UNDER MY DIRECTION IN CONFORMANCE WITH LAWS OF THE STATE OF OREGON, AT THE REQUEST OF THE U.S. FOREST SERVICE.

HISTORY OF SURVEYS

THE ORIGINAL G.L.O. SUBDIVISION SURVEY OF TOWNSHIP 32 SOUTH, RANGE 2 EAST, W.M., WAS PERFORMED BY DEPUTY SURVEYOR PETER APPLIGATE UNDER CONTRACT NO. 651 DATED APRIL 25, 1896.

AN UNRECORDED SURVEY OF SECTION 15 WAS PERFORMED BY EMPLOYEES OF ELK LUMBER COMPANY (NOW BOISE-CASCADE CORPORATION, MEDFORD, OREGON) IN 1962. MONUMENTS FOUND AND TIES MADE ARE DESCRIBED IN THE ATTACHED NARRATIVE.

THE EAST 1/2 OF THE NORTH LINE OF SECTION 15, AND THE NORTH 1/2 OF THE EAST LINE OF SECTION 15, WERE RESURVEYED BY ROGER KAUBLE, P.L.S. 1822, DURING JACKSON COUNTY RECORD SURVEY NO. 9764 DATED OCTOBER 31, 1983.

THE EAST LINE OF SECTION 15 WAS RESURVEYED BY KURT C. WEAVER, P.L.S. 1679, DURING JACKSON COUNTY RECORD SURVEY NO. 10371 DATED JULY 24, 1985.

NO OTHER SURVEYS ARE OF RECORD.

\*\* RECEIVED \*\*  
 Date: 6/3/86 By: SK  
 This survey consists of:  
 1 sheet(s) Map  
 5 page(s) Narrative  
 JACKSON COUNTY SURVEYOR

U.S. DEPARTMENT OF AGRICULTURE FOREST SERVICE REGION 6 ROGUE RIVER NATIONAL FOREST	
DEPENDENT RESURVEY AND SECTION SUBDIVISION SECTION 15, T.32S., R.2E., W.M. JACKSON COUNTY, OREGON PROJECT 86-4	
REVIEWED BY: <i>John W. Bull</i>	DATE: <i>7/1/86</i>
REVIEWED BY: <i>Donald Ewing</i>	DATE: <i>5/29/86</i>

SURVEY NARRATIVE TO COMPLY WITH  
PARAGRAPH 209.250 OREGON REVISED STATUTES

**SURVEY FOR:** Rogue River National Forest  
P. O. Box 520  
Medford, OR 97501

**LOCATION:** Located in Section 15, Township 32 South, Range 2  
East, Willamette Meridian, Jackson County, Oregon.

**BASIS OF BEARING:** Solar observation

**PURPOSE:** To subdivide Section 15, set monuments, and mark  
and post the boundaries between National Forest and  
private lands within said Section 15.

**HISTORY OF SURVEYS:** Prior to commencement of this survey, I performed  
an investigation of controlling section, quarter  
section, and one-sixteenth section corner points.  
The section corner common to Sections 10, 11, 14  
and 15 was originally established by Peter  
Applegate in 1896. Roger Kauble (PLS 1822)  
reestablished the corner for Sections 10, 11, 14  
and 15 by double proportionate measurement during  
Record Survey No. 9764 dated 1983. The North one-  
quarter corner for Section 15 was remonumented from  
original evidence by Elk Lumber Company in 1961.  
This remonumentation was accepted as the original  
corner position by the Jackson County Surveyor  
during re-establishment in 1974. The West one-  
quarter corner for Section 15 was re-established  
from original evidence by the Jackson County  
Surveyor in 1962. The South one-quarter corner for  
Section 15 was remonumented from original evidence  
by Everett L. Swain (PLS 759) during Jackson County  
Record Survey No. 5797-E dated September 13, 1974.  
The East one-quarter corner for Section 15 was  
remonumented from original evidence by Elk Lumber  
Company in 1961. This remonumentation was accepted  
as being the original corner position by the  
Jackson County Surveyor during re-establishment in  
1974. The North one-sixteenth corner for Sections  
14 and 15 was established by Kurt C. Weaver (PLS  
1679) during Jackson County Record Survey No. 10371  
dated July 24, 1985.

**PROCEDURE:** With the required controlling corner positions  
verified, I established a series of traverse lines  
tying all corners to part of a closed traverse. I  
then calculated the subdivision of Section 15,  
monumenting the required corner points as shown on  
the attached plat, and posted and blazed the pro-  
perty boundaries using 6 foot aluminum posts with  
National Forest boundary signs attached. Blazes  
are painted with red timber marking paint.

**EQUIPMENT USED:** Equipment used for this survey include a Wild T-2  
Theodolite and a Sokkisha Red 2L Distance Meter.

CORNERS ACCEPTED FOR CONTROL

All in Township 32 South, Range 2 East, Willamette Meridian, Jackson  
County, Oregon.

1. Section corner for Sections 10, 11, 14 and 15.

At the corner point, I found a 2 1/2 inch diameter brass cap monument marked:

T 32 S R 2 E

S10	S11
S15	S14

1983  
PLS 1822

And the following accessories:

A 10-inch diameter chinkapin bears N.55°40'E., 24.88 feet distance, with scribing T32S R2E S11 BT visible. Washer stamped PLS 1822 attached to lower blaze. (Record N.55-3/4° E., 24.90 feet)

A 17-inch diameter fir bears S.45°00'E., 29.98 feet distance, with scribing T32SR2E S14 BT visible. Washer stamped PLS 1822 attached to lower blaze. (Record S.44-3/4°E., 30.20 feet)

A 16-inch diameter fir bears S.22°19'W., 95.21 feet distance, with scribing T32S R2E S15 BT visible. Washer stamped PLS 1822 attached to lower blaze. (Record S.22 1/4°W., 95.20 feet)

A 7-inch diameter fir bears N.55°31'W., 29.12 feet distance, with scribing T32S R2E S10 BT visible. Washer stamped PLS 1822 attached to lower blaze. (Record N.55 1/4°W., 29.20 feet)

A 1 1/4 inch diameter iron post with a 2 inch diameter pot metal filled reducer, as noted in Record Survey No. 9764, marked:

T32S R2E

10	11
15	14

SEC COR  
1962

Bears N.46°07'W., 25.93 feet distance. (PLS 1822 Record N.45°58'W., 26.16 feet)

2. One-quarter corner for Sections 10 and 15.

At the corner point, I found a 1 1/4 inch diameter iron post with a 2 inch diameter pot metal filled reducer marked:

CS 1974  
T 32 S R 2 E

10
15

1/4 COR  
1961

And the following accessories:

An 8-inch diameter fir bears S.70°01'W., 15.80 feet distance, with scribing 1/4 S 15 BT visible on a partly healed blaze. (LS 1822 Record S.69-3/4°W., 15.80 feet)

A 22-inch diameter cedar bears N.29°47'E., 80.90 feet distance, with a healed blaze. (Original Record N.32°E., 125 lks. = 82.50 feet slope distance)

A 13-inch diameter by 6 foot tall fir bears S.80°35'E., 15.10 feet distance, with scribing CS BT visible. This tree now dead. (C.S. Record S.78 1/2°E., 15.00 feet)

A 35-inch diameter fir, tipped over with root wad exposed. The center of the root hole bears S.16°17'W., 9.00 feet distance. (Original Record S.21°W., 14 lks. = 9.24 feet distance)

3. One-quarter corner for Sections 15 and 16.

At the corner point, I found a standard 2 1/2 inch diameter Jackson County Surveyor brass cap monument marked:

T 32S    R2E  
           16 | 15  
 1/4        |        COR  
           CS  
           1962

And the following accessories:

A 19-inch diameter fir bears S.85°55'E., 61.90 feet distance, with a healed blaze. (1972 C.S. Record S.84 1/4°E., 61.20 feet)

A 19-inch diameter cedar bears S.21°13'E., 43.90 feet distance, with a healed blaze. (1962 C.S. Record S.19 1/2°E., 42.90 feet to face of tree)

A 25-inch diameter cedar bears S.75°23'W., 23.38 feet distance, with a healed blaze. (Original Record S.76 1/2°W., 35 lks. = 23.10 feet distance)

A 15-inch diameter fir bears N.42°19'W., 29.73 feet distance, with a healed blaze. (1962 C.S. Record N.40-3/4°W., 29.10 feet)

4. One-quarter corner for Sections 15 and 22.

At the corner point, I found a 1 inch diameter iron post with a 2 1/2 inch diameter brass cap marked:

SWAIN SURVEYING  
 T32S    R2E  
           1/4    S15  
                   S22  
           PLS 759  
 SURVEY MONUMENT 1974

And the following accessories:

A 36-inch diameter fir bears S.73°28'W., 10.10 feet distance, with bark scribing 1/4 S BT visible. (Original Record S.69 1/2°W., 18 lks. = 11.88 feet slope distance)

A 28-inch diameter cedar bears N.69°46'E., 12.40 feet distance, with a healed blaze. (Original Record N.69 1/2°E., 22 lks. = 14.52 feet slope distance)

5. One-quarter corner for Sections 14 and 15.

At the corner point, I found a 1 1/4 inch diameter iron post with a 2 inch diameter bell pipe reducer filled with pot metal. Monument loosely set in a mound of stone and marked:

T 32 S    R 2E  
           15 | 14  
           1/4 COR  
           1961

At the corner point, I remonument with a 2½ inch diameter x 30 inch long iron post with a 2½ inch diameter brass cap. I place old monument inside my iron post, build 3 foot x 3 foot mound of stone around monument, and mark brass cap:

T32S    R2E  
  
          ¼  
          |  
S15    |    S14  
          |  
          1986  
          LS 1071

From which accessories are:

A 16-inch diameter fir bears N.56°54'W., 29.32 feet distance, with a healed blaze. (1974 C.S. Record N.531½°W., 29.25 feet)

A 20-inch diameter fir bears N.48°40'E., 27.11 feet distance, with a healed blaze. (Original Record N.49°E., 50 lks. = 33.00 feet slope distance)

A 15-inch diameter fir bears S.57°48'E., 6.95 feet distance, with scribing S visible on an opened blaze. (Original Record S.60°E., 10 lks. = 6.60 feet distance)

6. North one-sixteenth corner for Sections 14 and 15.

At the corner point, I found a 2½ inch diameter iron post with a 2½ inch diameter brass cap marked:

T 32S    R 2E  
  
N 1/16    S15    |    S14  
          |  
          LS 1679  
          1985

And the following accessories:

A 7-inch diameter fir bears S.22°22'E., 14.00 feet distance, with scribing N1/16 S14 BT visible. (LS1679 Record S.23°10'E., 14.40 feet)

A 6-inch diameter fir bears S.66°03'W., 18.00 feet distance, with scribing N1/16 S15 BT visible. (LS1679 Record S.66°12'W., 18.30 feet)

A 1-inch diameter iron post with a 2 inch diameter pot metal filled reducer marked:

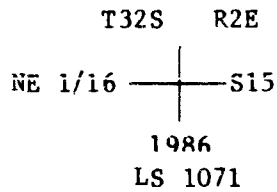
T 32S    R 2E  
  
          |  
N 1/16 BET. S15 & 14  
          1962

Bears N.52°56'27"W., 12.80 feet distance. (LS 1679 Record N.52°47'28"W., 12.77 feet)

CORNERS ESTABLISHED THIS SURVEY

7. Northeast one-sixteenth corner for Section 15, Township 32 South, Range 2 East, Willamette Meridian, Jackson County, Oregon.

At the corner point, I set a 2½ inch diameter x 30 inch long iron post with a 2½ inch diameter brass cap marked:

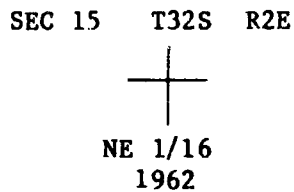


And mark the following accessories:

An 11-inch diameter fir bears S.12°03'E., 17.75 feet distance, scribed X BT.

An 18-inch diameter fir bears N.35°13'E., 34.18 feet distance, scribed NE 1/16 S15 LS 1071 BT.

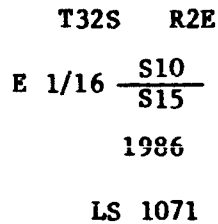
An unrecorded 1 1/4 inch diameter iron post monument with a 2 inch diameter pot metal filled reducer marked:



Bears S.87°44'30"W., 5.35 feet distance.

8. East one-sixteenth corner for Sections 10 and 15, Township 32 South, Range 2 East, Willamette Meridian, Jackson County, Oregon.

At the corner point, I set a 2 1/2 inch diameter x 30 inch long iron post with a 2 1/2 inch diameter brass cap marked:

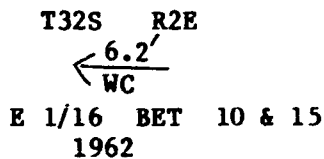


And mark the following accessories:

A 7-inch diameter fir bears N.06°40'E., 23.48 feet distance, scribed E1/16 S10 LS1071 BT.

A 6-inch diameter fir bears S.44°50'E., 28.04 feet distance, scribed E1/16 S15 LS 1071 BT.

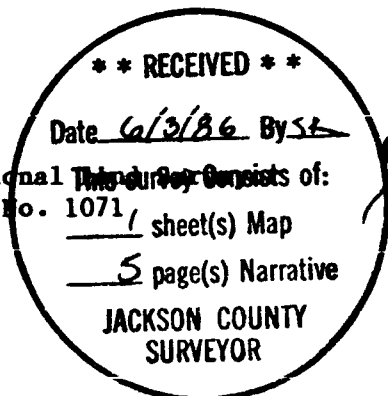
Note: I found a 1 1/4 inch diameter iron post (loosely set) with a 2 inch diameter pot metal filled reducer marked:



I remove said iron post and place inside my 2 1/2 inch diameter iron post.

April 30, 1986

HAROLD L. CENTER  
Registered Professional Land Surveyor  
Oregon Certificate No. 1071



REGISTERED  
PROFESSIONAL  
LAND SURVEYOR

OREGON  
HAROLD L. CENTER  
MAY 30, 1976  
No 1071