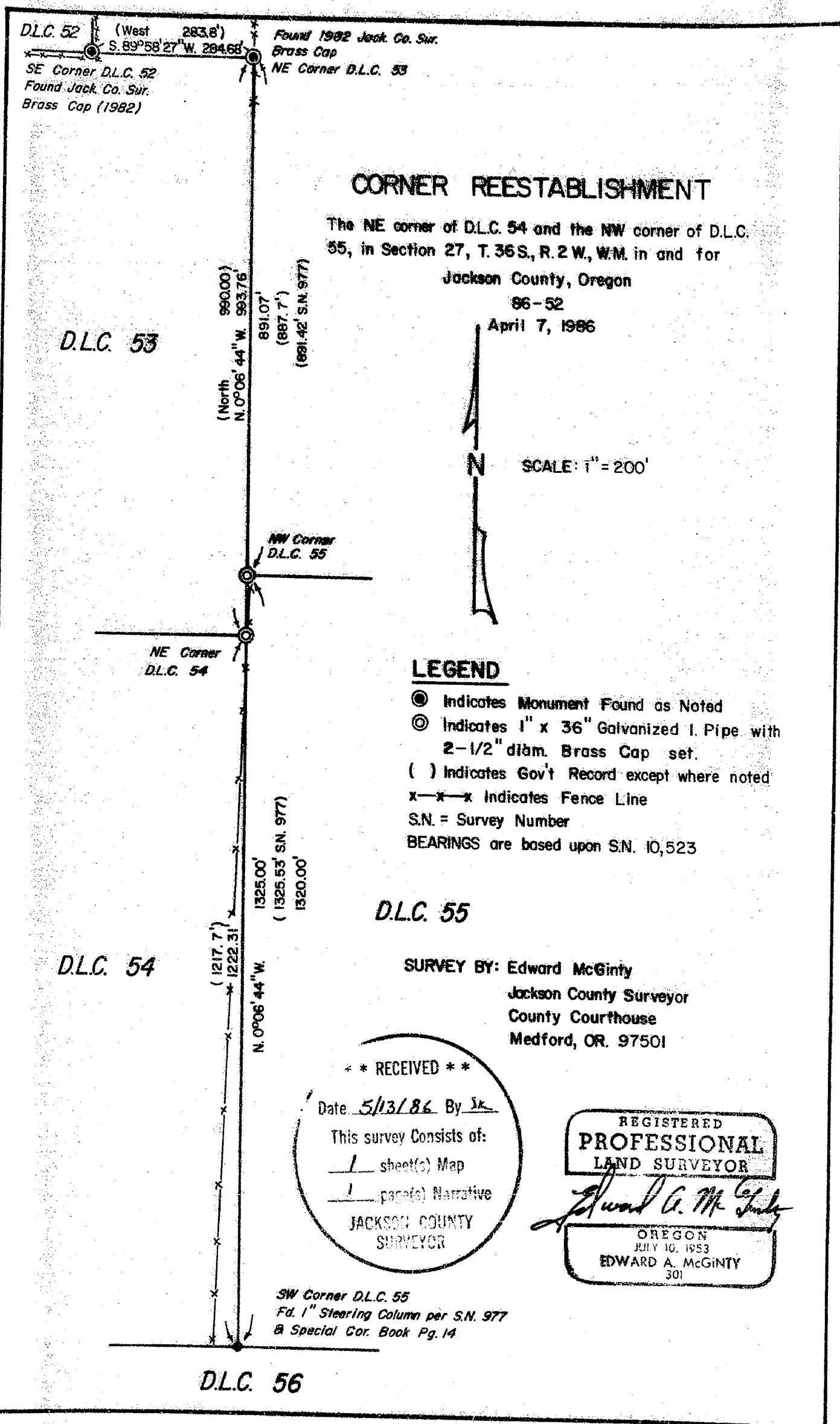


10556



### CORNER REESTABLISHMENT

The NE corner of D.L.C. 54 and the NW corner of D.L.C. 55, in Section 27, T. 36 S., R. 2 W., W.M. in and for Jackson County, Oregon

86-52

April 7, 1986



SCALE: 1" = 200'

#### LEGEND

- Indicates Monument Found as Noted
- ⊙ Indicates 1" x 36" Galvanized I. Pipe with 2-1/2" diam. Brass Cap set.
- ( ) Indicates Gov't Record except where noted
- x-x-x Indicates Fence Line
- S.N. = Survey Number
- BEARINGS are based upon S.N. 10,523

#### D.L.C. 55

SURVEY BY: Edward McGinty  
 Jackson County Surveyor  
 County Courthouse  
 Medford, OR. 97501

\*\* RECEIVED \*\*

Date 5/13/86 By sk

This survey Consists of:  
1 sheet(s) Map  
1 page(s) Narrative

JACKSON COUNTY SURVEYOR

REGISTERED  
**PROFESSIONAL**  
 LAND SURVEYOR

*Edward A. McGinty*

OREGON  
 JULY 10, 1953  
 EDWARD A. MCGINTY  
 301

SW Corner D.L.C. 55  
 Fd. 1" Steering Column per S.N. 977  
 @ Special Cor. Book Pg. 14

#### D.L.C. 56

10556

36 2W 27 S

Survey No. 10556

SURVEY NARRATIVE TO COMPLY WITH PARAGRAPH 209.250  
OREGON REVISED STATUTES

SURVEY FOR: Jackson County

SURVEY BY: Edward A. McGinty  
Jackson County Surveyor  
County Courthouse  
Medford, Oregon 97501

LOCATION: In the Southeast quarter of Section 27, Township 36 South,  
Range 2 West of the Willamette Meridian, Jackson County,  
Oregon.

PURPOSE: To re-monument the Northwest corner of Donation Land Claim 55  
which was destroyed by sewer line construction and to re-establish  
the Northeast corner of Donation Land Claim 54.

PROCEDURE: The Northwest corner of D.L.C. 55 was initially re-established by  
proportionate measurement on Survey Number 977 and reference monuments to the  
corner were established during the staking of the nearby sewer line. The corner  
monument was destroyed during construction of said line. One of the reference  
points was recovered, and as a check, the line between monuments at the Northeast  
corner of D.L.C. 53 and the Southwest corner of D.L.C. 55 was re-measured. These  
positions were in agreement and the corner was replaced at the record position.

The Northeast corner of D.L.C. 54 was then set at a proportionate distance  
on the west line of D.L.C. 55.

While occupying the Northeast corner of D.L.C. 53, the Southeast corner of  
D.L.C. 52 was located as shown.

For further information, see pages 15 and 16 of the special corner book for  
this township.

Monuments set are 1x36 inch galvanized iron pipes with 2½ inch diam. brass  
caps.

BASIS OF BEARINGS: Survey Number 10523, on traverse stations along Upton Road.

DATE: April 7, 1986

