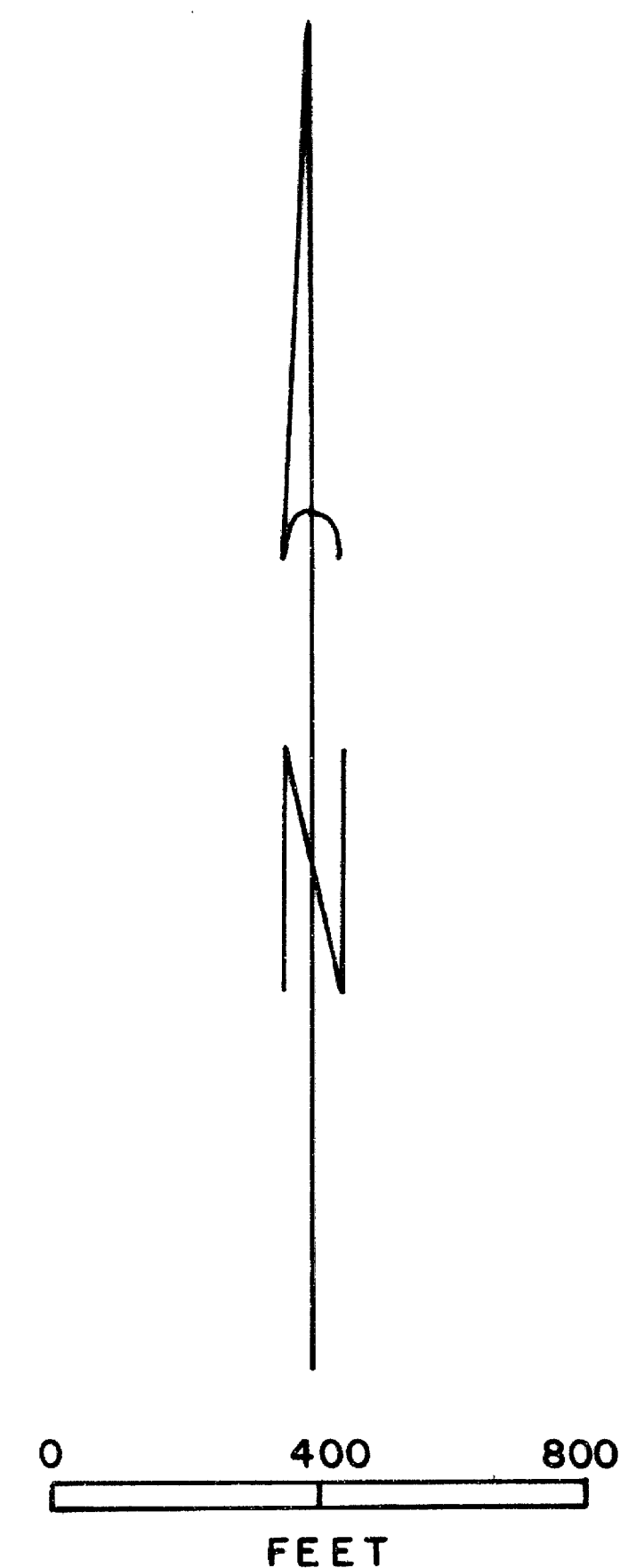
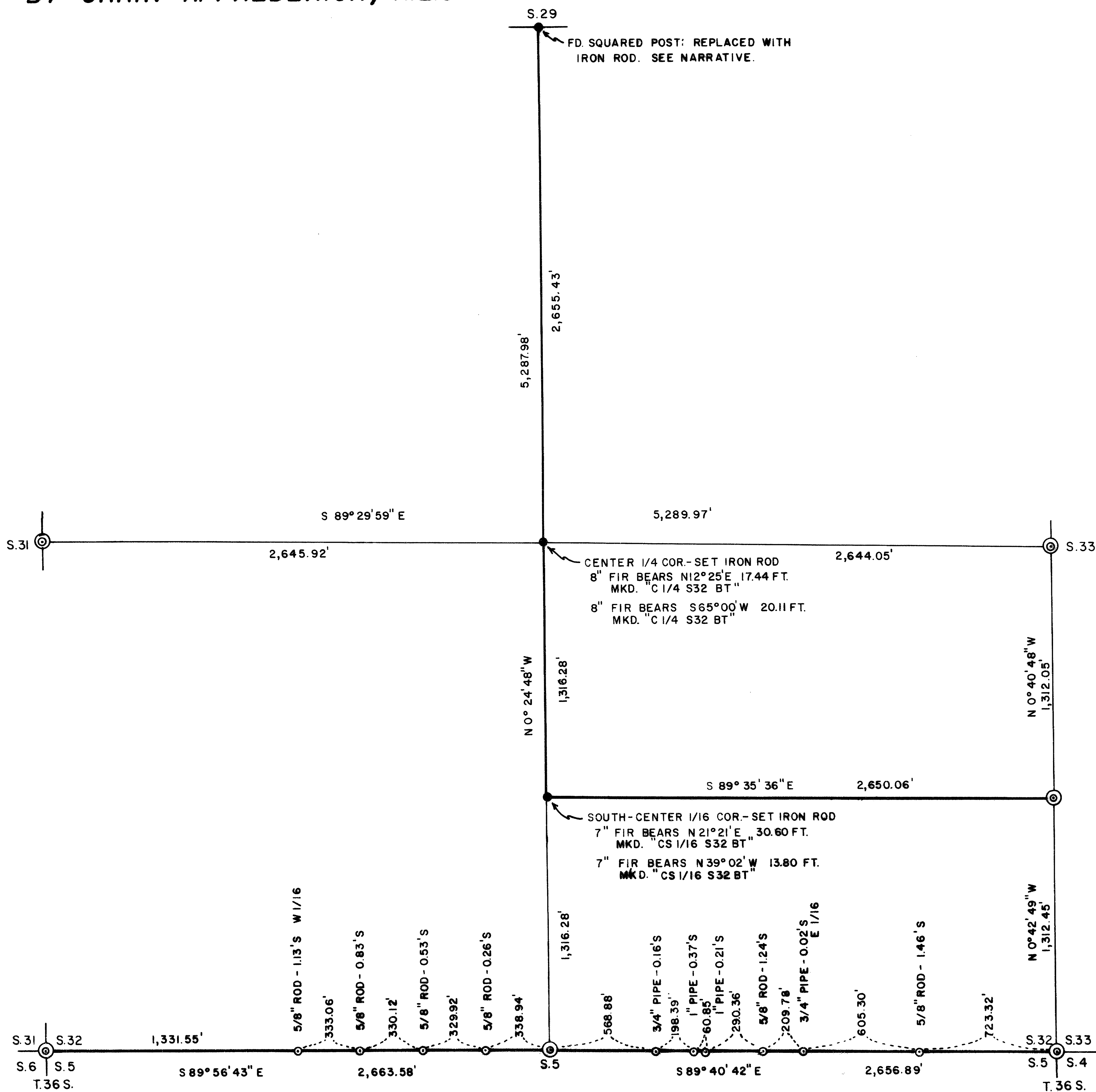


SURVEY IN SECTION 32, T.35 S., R.4 W., W.M.
FOR: BOISE CASCADE CORPORATION
BY: ORRIN K. FREDERICK, R.L.S.



BASIS OF BEARING: SOLAR OBSERVATION

LEGEND

- ⊙ FOUND GOV'T MONUMENT - SEE ACCOMPANYING NARRATIVE
- ⊙ FOUND MONUMENT AS SHOWN
- SET 5/8" X 30" IRON ROD WITH ALUMINUM CAP
- LINE BLAZED, PAINTED, AND POSTED
- LINE MEASURED BUT NOT MARKED

DATE COMPLETED: APRIL 8, 1986

SURVEY BY: ORRIN FREDERICK
 613 CHERRY ST.
 CENTRAL POINT
 OREGON 97502

REGISTERED
 PROFESSIONAL
 LAND SURVEYOR
Orrin K. Frederick
 OREGON
 JULY 16, 1982
 ORRIN K. FREDERICK
 1987

*** RECORDED ***
 Date 4/21/86
 1
 2
 JACKSON COUNTY
 SURVEYOR

SURVEY NARRATIVE TO COMPLY WITH O.R.S. 209.250

SURVEY FOR: Boise Cascade Corporation
F. O. Box 100
Medford, Oregon 97502

LOCATION: Section 32, Township 35 South, Range
4 West, Willamette Base and Meridian,
Jackson County, Oregon.

PURPOSE: To establish corner positions and mark
boundaries as shown on the accompan-
ing plat.

PROCEDURE: At the following corner positions, I
found monuments and accessories as
follows:

SECTION CORNER COMMON TO SECTIONS 32 AND 33, T. 35S., R.4W., AND
SECTIONS 4 AND 5, T. 36S., R.4W., W.M.

Found 1982 BLM Aluminum pipe and cap exposed 4" from which:
10" B. Oak bears N35°59'W, 66.02 ft. (N36°W, 66.66 ft.) with
scribe marks "BT" visible.
18" P. Pine bears N49°12'E, 45.76 ft. (N48½°E, 45.87 ft.) with
healed blazes.
3" B.Oak bears S29°00'E, 18.50 ft. (S28½°E, 18.15 ft.) with
visible scribing "T36SR4WS4BT".
22" Cedar bears S47°05'W, 56.36 ft. (S47¼°W, 56.43 ft.) with
Healed double blaze.

EAST 1/16 CORNER COMMON TO SECTION 32, T.35S, R.4W., AND SECTION 5,
T.36S., R.4W, W.M.

Found 3/4" pipe set flush 0.02 ft. South of line from which:
8" Fir bears S19°E, 10.11 ft. with healed blaze.
7" B. Oak bears S63°W, 4.43 ft. with healed blaze.

1/4 SECTION CORNER COMMON TO SECTION 32, T.35S., R.4W., and SECTION
5, T.36S., R.4W., W.M.

Found 1½" iron pipe with 1986 Jackson County Brass Cap exposed
4" from which:
10" Laurel bears S19°35'W, 22.85 ft. (S18½°W, 22.3 ft.) with
healed blazes.
22" W. Oak bears S63°14'W, 38.02 ft. (S63°W, 37.9 ft.) with
open face - no scribing visible.
11" P.Pine bears N66°01'W, 19.05 ft. (N66¼°W, 18.7 ft.) with
partially visible scribing on healing faces.
10" B. Oak bears N31°04'E, 19.46 ft. (N31°E, 19.1 ft.) with
a healed blaze.
7" B.Oak bears N78°50'E, 29.16 ft. (N79¼°E, 29.0 ft.) with
healed blazes.
5/8" rebar with RCE 5685 plastic cap bears N89°57'W, 10.01 ft.

WEST 1/16 CORNER COMMON TO SECTION 32, T.35S., R.4W., AND SECTION
5, T.36S., R.4W., W.M.

Found 5/8" rebar, exposed 2", 1.13 feet South of line from which:
15" Fir bears S4°30'W, 19.3 ft. with healed blaze.
13" B. Oak bears N83°30'W, 27.4 ft. with healed blaze.

SECTION CORNER COMMON TO SECTIONS 31 AND 32, T.35S., R4W., AND
SECTIONS 5 AND 6, T.36S., R.4W., W.M.

Found 1979 BLM brass-capped monument exposed 4", from which:
13" Fir bears S35°11'E, 43.15 ft. (S35¼°E, 43.56 ft.) with
healed blazes.
12" Fir bears S42°55'W, 23.67 ft. (S42 3/4°W, 23.43 ft.) with
healed blazes.
13" Fir bears N33°05'W, 30.44 ft. (N33°W, 30.36 ft.) with
healed blazes.
17" W. Oak bears N11°14'W, 36.93 ft. (N11°W, 37.29 ft.) with
rotted faces - no scribing visible.
10" S. Pine bears N28°04'E, 27.08 ft. (N27°E, 27.06 ft.) with
healed blazes - poor condition.

1/4 SECTION CORNER COMMON TO SECTIONS 31 AND 32, T.35S., R.4W., S.M.

Found 1982 Aluminum pipe and cap exposed 4" from which:
 9" Fir bears $S9^{\circ}38'E$, 15.35 ft. ($S92^{\circ}1'W$, 15.18 ft.) with visible scribing "1/4S31BT".
 13" Fir bears $N65^{\circ}05'E$, 16.56 ft. ($N64^{\circ}E$, 16.50 ft.) with visible scribing "1/4S32BT".

1/4 SECTION CORNER COMMON TO SECTIONS 29 AND 32, T.35S., R.4W., W.M.

Found squared post set by BLM Administrative Survey Crew at proportionate distance in January, 1986. I secured a copy of their field notes and made a complete check on their field procedures and calculations. I found their work entirely acceptable and after a diligent, yet fruitless search in the area for original evidence, I accepted their position and replaced the post with a 5/8" X 30" iron rebar with a properly marked aluminum cap 28" in the ground at the corner position, from which I scribed the following:

8" Fir bears $N14^{\circ}1'W$, 13.10 ft. marked "1/4S29BT".
 10" Fir bears $S87^{\circ}E$, 24.40 ft. marked "1/4S32BT".

1/4 SECTION CORNER COMMON TO SECTIONS 32 AND 33, T.35S., R.4W., W.M.

Found 1982 BLM Aluminum capped 2 1/2" pipe set in a mound of stone from which:

19" P.Pine bears $N75^{\circ}23'E$, 14.47 ft. (no record) with healed blazes.
 12" P.Pine bears $S61^{\circ}59'E$, 28.23 ft. ($S62^{\circ}4'E$, 28.71 ft.) with visible scribing "1/4 S33BT".
 23" S. Pine bears $S28^{\circ}46'W$ 11.33 ft. ($S27^{\circ}1'W$, 11.55 ft.) with visible scribing "1/4 S32BT".
 14" Hollow B. Oak, now dead, bears $N64^{\circ}53'W$, 27.48ft. ($N64^{\circ}1'W$, 27.06 ft.) with reverse scribe visible.

SOUTH 1/16 CORNER COMMON TO SECTIONS 32 AND 33, T.35S, R4W., W.M.

Found 1982 BLM Aluminum pipe and cap exposed 6" from which:
 13" Fir bears $S74^{\circ}49'E$, 52.56 ft ($S75^{\circ}E$, 54.45 ft) with healed blaze.
 11" S. Pine bears $S56^{\circ}44'W$, 37.39 ft. ($S57^{\circ}W$, 37.29 ft) with visible scribe "S1/16S32BT".

Using the above found corner positions, I then traversed to each position, utilizing a combination of ground control traverse along boundary lines and control traverse from a point which overlooks approximately 90% of the section subdivided the section, setting monuments as shown and marking boundaries as shown on attached survey map.

EQUIPMENT:

WILD T-1 theodolite
 and Mac II H electronic
 measuring device.

BASIS OF BEARING:

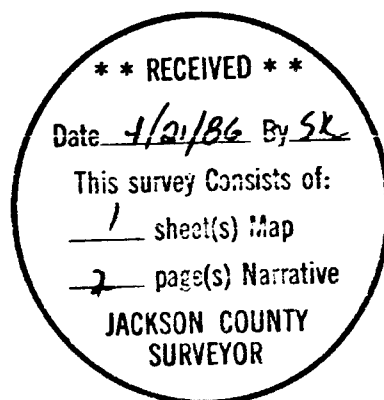
Solar Observation

DATE COMPLETED:

April 8, 1986

SURVEY BY:

Orrin K. Frederick R.L.S.
 613 Cherry St.
 Central Point
 Oregon 97502



35 4W 32 200 & 400