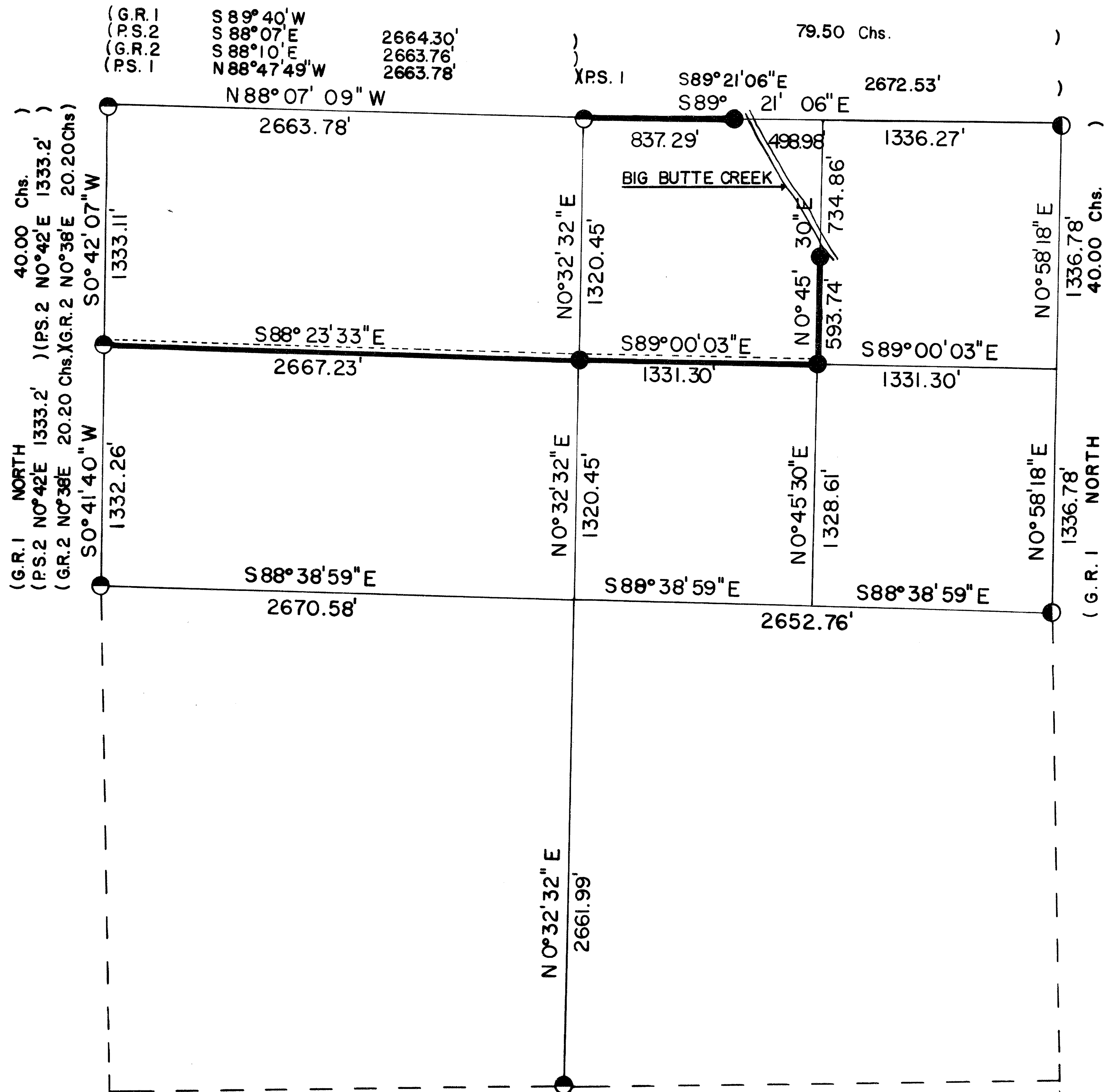


S20 T35S R3E W.M.



CERTIFICATE OF SURVEY

I, ARTHUR R. RAMBO, REGISTRATION No. 1086 REGISTERED PROFESSIONAL LAND SURVEYOR STATE OF OREGON, HEREBY CERTIFY THAT THIS MAP CORRECTLY REPRESENTS A SURVEY MADE BY ME OR UNDER MY DIRECTION IN CONFORMANCE WITH THE LAWS OF THE STATE OF OREGON.



LEGEND

- SET 5/8" BY 30" REBAR WITH 1 1/2" ALUM. CAP
- FOUND STANDARD BLM MONUMENT
- FOUND COUNTY MONUMENT
- LINE POSTED AND BLAZED THIS SURVEY
- - - - EXISTING FENCE LINE
- P.S.1 PRIVATE SURVEY No. 10450
- P.S. 2 PRIVATE SURVEY No. 4512
- G.R.1 1855 GOVERNMENT RECORD
- G.R.2 1980 GOVERNMENT RECORD

BASIS OF BEARING

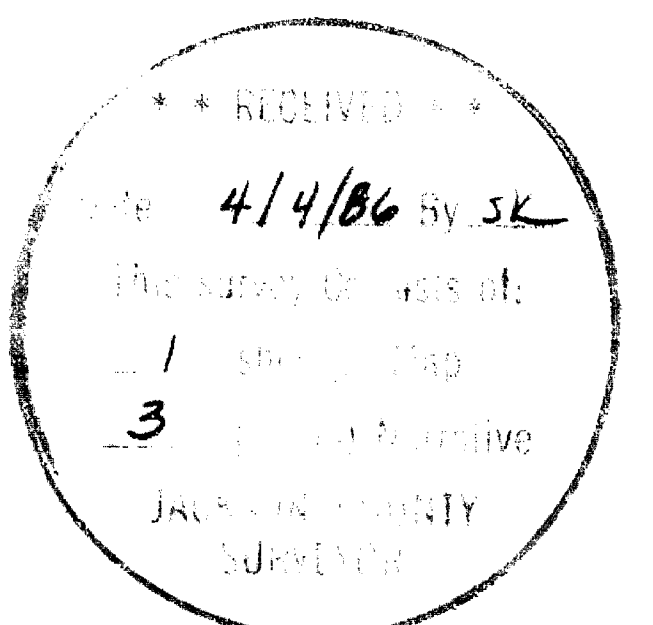
SURVEY No. 10450

SCALE

1" = 500'

DATE

APRIL 3, 1986

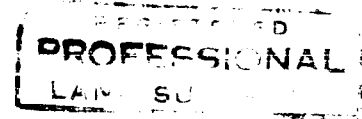


SURVEY NARRATIVE TO COMPLY WITH O.R.S. 209.250

Location: North half of Section 20, Township 35 South, Range 3 East, Willamette Meridian, Jackson County, Oregon.

Survey for: Medford Resources Corporation  
P. O. Box 550  
Medford, Oregon 97501

Survey by: Arthur R. Rambo PLS 1086  
735 Vista Park Drive  
Eagle Point, Oregon 97524



Date: April 3, 1986

Purpose: To mark and post the boundaries of Medford Resources Corporation land in the North half of Section 20, as shown on the plat to accompany this narrative. To correct the bearing of the West half of the section line common to Sections 17 and 20 on Survey No. 10450. Correction shown on the plat to accompany this narrative.

Procedure: The original survey of Section 20 was completed by Nathaniel Ford under contract #58 dated April 18, 1855. The Northwest corner, North one-sixteenth corner common to Sections 19 and 20, and West one-quarter corner were established by proportionate measurement by Duane Smeltzer (PLS 461) on Survey No. 4512. The North one-quarter corner, Northeast corner, East one-quarter corner, and South one-quarter corner were reestablished by the Jackson County Surveyor from original evidence. The Bureau of Land Management Cadastral Surveyors have remonumented the North one-quarter corner, Northwest corner, North one-sixteenth corner common to Sections 19 and 20, West one-quarter corner, and South one-quarter corner.

I performed a closed traverse beginning from Survey No. 10450 at the Northwest corner, then I proceeded to the North one-sixteenth corner common to Sections 19 and 20, then to the West one-quarter corner, then to the South one-quarter corner, then to the East one-quarter corner, then to the Northeast corner closing to Survey No. 10450. From this closed traverse I calculated the subdivision of Section 20. Then I performed a closed traverse of the interior lines needed, beginning and closing on the exterior lines of the section. I set corners and posted lines as shown on the plat to accompany this narrative.

CORNERS FOUND AND ACCEPTED FOR CONTROL:

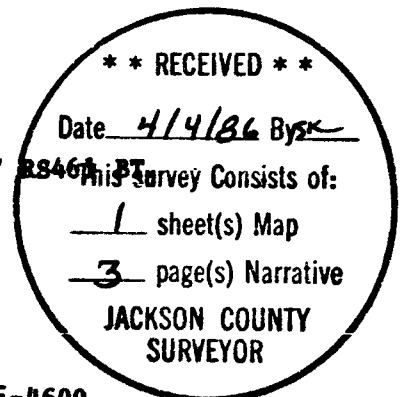
All measurements to bearing trees are to the center of tree at the base unless otherwise stated.

Section corner common to Sections 17, 18, 19, and 20, Township 35 South, Range 3 East. At the corner location I found a standard Bureau of Land Management monument, exposed 6 inches in a mound of stone, marked:

T35S R3E	
S18	S17
S19	S20
1980	

From which:

- A 10 inch dia. Fir bears S 64° 23' W 11.5 feet unopened.
- An 8 inch dia. Fir bears N 55° 00' W 3.7 feet unopened.
- An 8 inch dia. Cedar bears N 39° 25' E 1.6 feet marked S17
- A 6 inch dia. Fir bears S 6° 09' E 10.6 feet unopened.



Tax Lot #35-3E-4600

One-quarter corner common to Sections 17 and 20, Township 35 South, Range 3 East. At the corner location I found a standard Bureau of Land Management monument, exposed 15 inches in a mound of stone, marked:

T35S R3E  
 $\frac{1}{4}$  S17  
 4 S20  
 1965

From which:

- A 21½ inch dia. Pine bears N 68° 50' E 62.0 feet with scribe visible in chopped out face.
- A 27 inch dia. Fir bears S 29° 32' W 23.0 feet unopened.
- An 8½ inch dia. Fir bears S 43° 48' W 8.0 feet unopened.
- A 9 inch dia. Fir bears N 13° 21' W 10.6 feet unopened.

Section corner common to Sections 16, 17, 20, and 21, Township 35 South, Range 3 East. At the corner location I found a Jackson County monument, 2½ inch dia. brass cap exposed 6 inches, marked:

Jackson County  
 T35S R3E 1  
 $\frac{17}{20}$  |  $\frac{16}{21}$  9  
 7

From which:

- An 11½ inch dia. Fir bears S 2° 38' E 2.8 feet unopened.
- A 24½ inch dia. Cedar bears S 26° 37' W 29.1 feet marked 220 in chopped out face.
- A 14½ inch dia. Fir bears S 50° 12' W 54.7 feet unopened.
- A 10 inch dia. Fir bears N 48° 19' W 22.8 feet unopened.
- A 12½ inch dia. Fir (dead) bears N 19° 40' E 17.9 feet unopened.

One-quarter corner common to Sections 20 and 21, Township 35 South, Range 3 East. At the corner location I found a Jackson County monument, 2½ inch dia. brass cap, buried 2 inches, marked:

T35S R3E  
 $\frac{1}{4}$  S20 | S21  
 4 CS  
 1977

From which:

- A benchmark tablet bears S 56° 17' E 36.1 feet.
- Northeasterly corner of concrete house foundation bears S 39° 40' W 41.7 feet.
- Northeasterly corner of a 32 inch by 42 foot sidewalk bears S 57° 52' W 45.0 feet.
- Northwesterly corner of sidewalk, where it meets the concrete driveway parking apron, bears S 75° 42' W 72.1 feet.

One-quarter corner common to Sections 20 and 29, Township 35 South, Range 3 East. At the corner location I found a standard Bureau of Land Management monument, exposed 6 inches in a mound of stone, marked:

T35S R3E  
 $\frac{1}{4}$  S20 | S29  
 4 S29  
 1978

From which:

- A 16 inch dia. Pine bears N 43° 18' E 25.5 feet unopened.
- A 31 inch dia. Pine bears S 34° 40' E 25.0 feet unopened.

One-quarter corner common to Sections 19 and 20, Township 35 South, Range 3 East. At the corner location I found a standard Bureau of Land Management monument, exposed 6 inches next to a fence post, marked:

T35S R3E  
 $\frac{1}{4}$   
 S19 | S20  
 1980

From which:

- A 12 inch dia. Pine bears S 14° 00' E 168.0 feet with scribes visible in a partially healed face.
- An 11 inch dia. Pine stump bears S 13° 29' W 317.9 feet marked 1/4S 19 RS461 BT.
- A 14 inch dia. Pine bears S 27° 17' W 354.8 feet marked S 19 BT.

North one-sixteenth corner common to Sections 19 and 20, Township 35 South, Range 3 East. At the corner location I found a standard Bureau of Land Management monument, exposed 6 inches in a mound of stone, marked:

N1/16  
S19 | S20  
1980

From which:

- An 11 inch dia. Pine bears N 47° 48' E 17.4 feet with scribes visible in a partially healed face.
- An 8½ inch dia. Fir bears S 69° 24' W 17.4 feet unopened.

CORNERS SET THIS SURVEY:

All measurements to bearing trees are to the center of tree at the base unless otherwise stated. All bearing trees have a brass washer marked LS 1086 nailed to the BT face of tree.

Centernorth one-sixteenth corner of Section 20, Township 35 South, Range 3 East. At the corner location I set a 5/8 by 30 inch rebar with a 1½ inch dia. Alum. cap, exposed 8 inches in a mound of stone, marked:

T358 R3E  
S20  
CN + 1/16  
LS1086

From which:

- A 5 inch dia. Oak bears S 35° 24' E 43.6 feet marked CN 1/16 S20 in upper face, BT in lower face.
- A 10½ inch dia. Pine bears S 50° 38' W 59.5 feet marked CN 1/16 S20 in upper face, BT in lower face.

Northeast one-sixteenth corner of Section 20, Township 35 South, Range 3 East. At the corner location I set a 5/8 by 30 inch rebar with a 1½ inch dia. Alum. cap, exposed 18 inches in a mound of stone, marked:

T358 R3E  
S20  
NE + 1/16  
LS1086

From which:

- A 7½ inch dia. Fir bears S 49° 00' W 28.5 feet marked NE 1/16 S20 in upper face, BT in lower face.
- An 11½ inch dia. Fir bears N 52° 04' E 34.8 feet marked NE 1/16 S20 in upper face, BT in lower face.

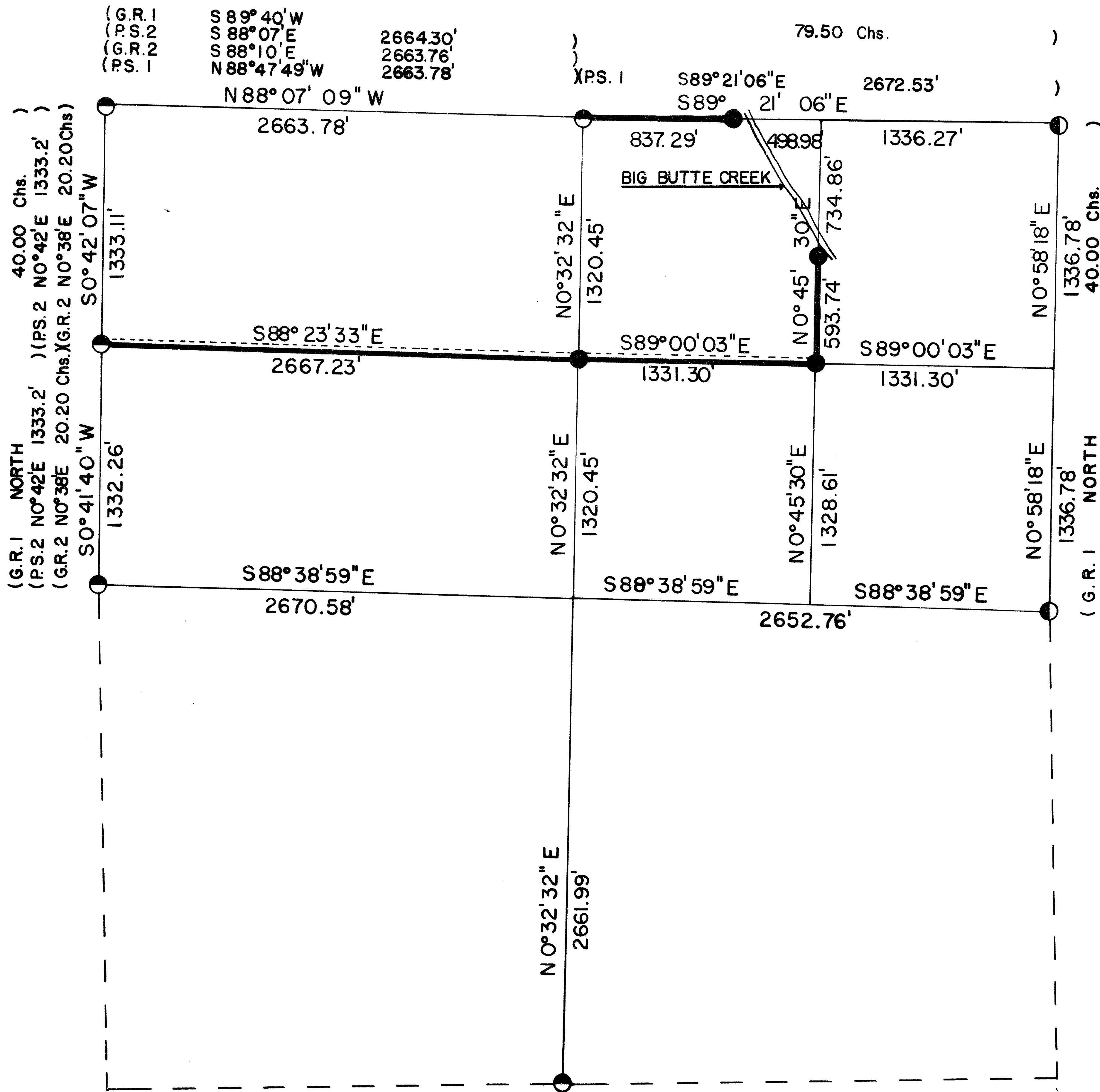
I set a 5/8 by 30 inch rebar with a 1½ inch dia. Alum. cap, exposed 11 inches for witness corner. Witness corner is S 89° 21' 06" E 837.29 feet from the North one-quarter corner on the section line between Sections 17 and 20, 70.0 feet West of the high water mark on the left bank of Big Butte Creek. Alum. cap is marked:

+  
LS1086

I set a 5/8 by 30 inch rebar with a 1½ inch dia. Alum. cap, exposed 11 inches for witness corner. Witness corner is N 0° 45' 30" E 593.74 feet from the Northeast one-sixteenth corner on the North-South centerline of the Northeast quarter of Section 20, 5.0 feet South of the high water mark on the left bank of Big Butte Creek. Alum. cap is marked:

+  
LS1086

S20 T35S R3E W.M.



CERTIFICATE OF SURVEY

I, ARTHUR R. RAMBO, REGISTRATION No. 1086 REGISTERED PROFESSIONAL LAND SURVEYOR STATE OF OREGON, HEREBY CERTIFY THAT THIS MAP CORRECTLY REPRESENTS A SURVEY MADE BY ME OR UNDER MY DIRECTION IN CONFORMANCE WITH THE LAWS OF THE STATE OF OREGON.



LEGEND

- SET 5/8" BY 30" REBAR WITH 1 1/2" ALUM. CAP
- FOUND STANDARD BLM MONUMENT
- FOUND COUNTY MONUMENT
- LINE POSTED AND BLAZED THIS SURVEY
- - - - EXISTING FENCE LINE
- PS.1 PRIVATE SURVEY No. 10450
- PS.2 PRIVATE SURVEY No. 4512
- G.R.1 1855 GOVERNMENT RECORD
- G.R.2 1980 GOVERNMENT RECORD

BASIS OF BEARING

SURVEY No. 10450

SCALE

1" = 500'

DATE

APRIL 3, 1986

