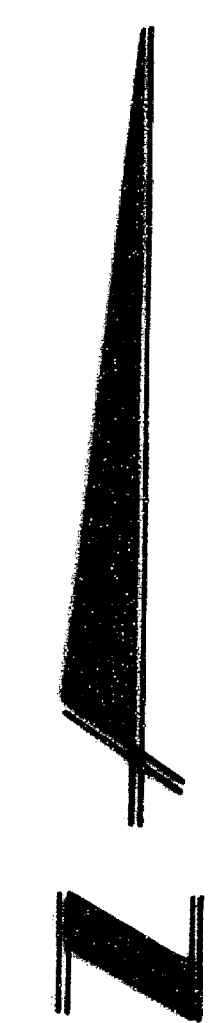
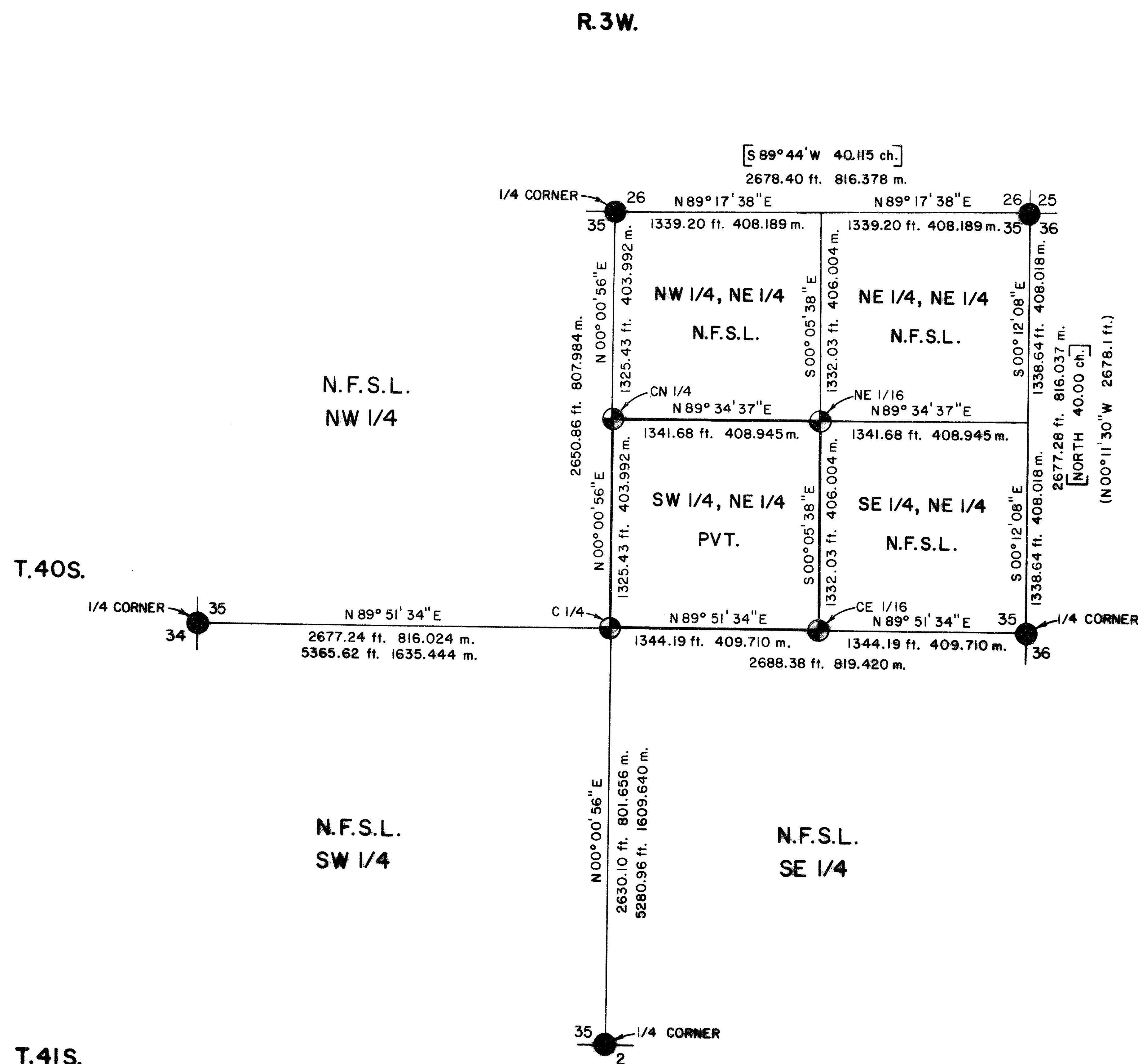
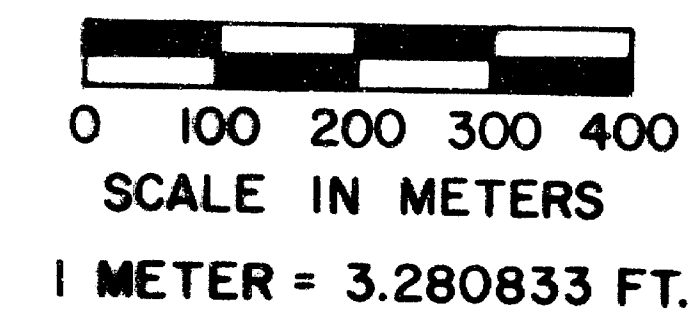
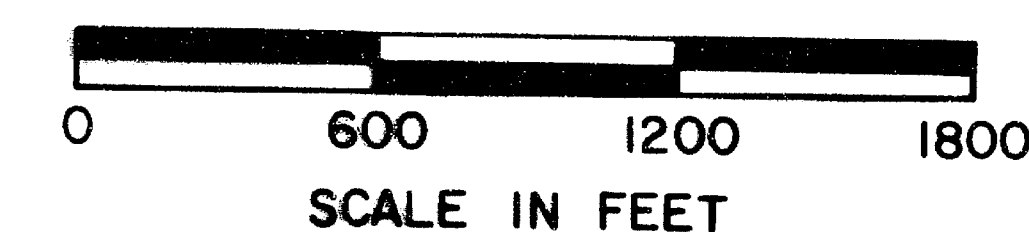


MAP OF SURVEY FOR ROGUE RIVER NATIONAL FOREST

P.O. BOX 520
MEDFORD, OREGON 97501



BASIS OF BEARING: SOLAR OBSERVATION



**** RECEIVED ****
 Date 4/1/86 By sk
 This survey consists of:
1 sheet(s) Map
5 page(s) Narrative
 JACKSON COUNTY
 SURVEYOR

T.41S.

LEGEND

- B.L.M. OR JACKSON COUNTY BRASS CAP.
- ⊕ 2 1/2" BRASS CAP MONUMENT SET THIS SURVEY.
- LINE POSTED AND BLAZED THIS SURVEY (6 FT. ALUMINUM POSTS WITH FOREST BOUNDARY SIGNS ATTACHED)
- CALCULATED LINE FROM TRAVERSE SURVEY
- [] GOV'T. RECORD: SAMUEL LACKLAND, CONTRACT NO. 429, DATED 5 JANUARY, 1882.
- N.F.S.L. NATIONAL FOREST SYSTEM LANDS
- () RECORD SURVEY NO. 4767 DATED DECEMBER 31, 1971

HISTORY OF SURVEYS

THE ORIGINAL EXTERIOR LINES OF SECTION 35, TOWNSHIP 40 SOUTH, RANGE 3 WEST, WERE SURVEYED BY SAMUEL W. LACKLAND UNDER CONTRACT NO. 429 DATED JANUARY 5, 1882. THE EAST LINE OF SECTION 35 WAS RESURVEYED BY ROBERT M. THOMPSON, P.E. NO. 3683, DURING RECORD SURVEY NO. 4767 DATED DECEMBER 31, 1971. NO OTHER SURVEYS ARE OF RECORD.

CERTIFICATE OF SURVEY

I, HAROLD L. CENTER, REGISTRATION NO. 1071 REGISTERED PROFESSIONAL LAND SURVEYOR, STATE OF OREGON, HEREBY CERTIFY THAT THIS PLAT CORRECTLY REPRESENTS A SURVEY MADE BY ME OR UNDER MY DIRECTION IN CONFORMANCE WITH THE LAWS OF THE STATE OF OREGON, AT THE REQUEST OF THE U.S. FOREST SERVICE.

REGISTERED
**PROFESSIONAL
 LAND SURVEYOR**

HAROLD L. CENTER
 REG. NO. 1071

U.S. DEPARTMENT OF AGRICULTURE FOREST SERVICE REGION 6 ROGUE RIVER NATIONAL FOREST	
DEPENDENT RESURVEY AND SECTION SUBDIVISION SECTION 35, T.40S., R.3W., W.M. JACKSON CO., OREGON PROJECT 86-18	
REVIEWED BY <u>John W. Bell</u>	DATE <u>3/10/86</u>
REVIEWED BY <u>Quill Ewing</u>	DATE <u>3/12/86</u>

SURVEY NARRATIVE TO COMPLY WITH
PARAGRAPH 209.250 OREGON REVISED STATUTES

SURVEY FOR: Rogue River National Forest
P. O. Box 520
Medford, OR 97501

LOCATION: Section 35, Township 40 South, Range 3 West,
Willamette Meridian, Jackson County, Oregon.

BASIS OF BEARING: Solar observation

PURPOSE: To monument corners and mark and post the boundaries between the National Forest and private lands within Section 35.

PROCEDURE: Prior to commencement of this survey, I performed an investigation of controlling section and quarter section corner points. The north one-quarter and west one-quarter corners for Section 35 were re-monumented from original evidence by the Jackson County Surveyor in 1980. The south one-quarter and east one-quarter corners for Section 35, and the section corner common to Sections 25, 26, 35 and 36, were re-monumented from original evidence by the Bureau of Land Management, Division of Cadastral Surveys in 1964.

With all controlling corners found, I ran a series of closed traverse lines to each controlling corner. Section subdivision was calculated from traverse data.

I then ran a random traverse adjacent to property lines separating private and National Forest lands, closing my random line to my control lines. From this data corner points were established and property lines posted, offsets from the random lines to the true position of the property lines were calculated.

Property lines are marked with six foot aluminum posts with Forest Service Forest Boundary signs attached, and trees along the true line are blazed and painted with red timber marking paint.

EQUIPMENT: This survey was performed utilizing a Wild T-2 Theodolite and Hewlett-Packard 3808A, and Wild DI-4 Distance Meters.

CORNERS ACCEPTED FOR CONTROL

Section corner to Sections 25, 26, 35 and 36, Township 40 South, Range 3 West, Willamette Meridian.

At the corner point I found a standard Bureau of Land Management Cadastral Surveys brass cap monument marked:

DEPT. OF INTERIOR
BUREAU OF LAND MANAGEMENT
T 40 S R 3 W

S26	S25
S35	S36

1964
CADASTRAL SURVEYS

And the following references:

An 8-inch diameter madrone bears S.63°32'E., 12.00 feet distance, with fragments of scribe marks visible. (Original record S.60°E., 18 Lks.) This tree is now dead.

A 7-inch diameter fir bears S.07°34'E., 14.20 feet distance, with scribe marks visible on a partially healed blaze. (B.L.M. record S.6°E., 22 Lks.)

A 32-inch diameter pine bears S.05°43'W., 17.67 feet distance, with a healed blaze. (Original record S.3°W., 30 Lks.)

A 9-inch diameter fir bears S.18°53'W., 14.98 feet distance, with partially healed blaze. (B.L.M. record S.20°W., 24 Lks.)

A broken, decayed fir stump of undetermined size bears N.69°42'W., 17.10 feet distance. No scribe marks visible. (Original record N.70°W., 26 Lks.)

A 10-inch diameter pine bears N.52°56'W., 19.50 feet distance, with a healed blaze. (B.L.M. record N.55°W., 30 Lks.)

A 15-inch diameter fir snag bears N.45°15'E., 32.66 feet distance, with a healed blaze. (B.L.M. record N.46°E., 48 Lks.)

A 31-inch diameter fir snag bears N.56°24'E., 35.52 feet distance, with a healed blaze. (Original record 24-inch fir; N.58°E., 54 Lks.)

An 8-inch diameter fir bears N.30°33'E., 47.13 feet distance, scribed T40S R3W S25 LS1071 BT. (Record R.S. 9324, 1982)

The one-quarter section corner common to Sections 26 and 35, Township 40 South, Range 3 West, Willamette Meridian.

At the corner point I found a standard Jackson County Surveyor brass cap monument marked:

JACKSON COUNTY
T 40 S R3W

$\frac{1}{4}$ $\frac{S26}{S35}$

1980

And the following references:

An 11-inch diameter pine bears S.11°52'W., 3.90 feet distance, with a partially healed blaze. (Jackson County record S.10½°W., 3.80 feet)

A 17-inch diameter madrone bears S.81°05'W., 16.57 feet distance, with a healed blaze. (Original record S.80°W., 25 Lks.)

An 8-inch diameter fir bears N.65°35'W., 11.40 feet distance, with a partially healed blaze. (Jackson County record N.65°45'W., 11.15 feet)

A 24-inch diameter pine bears N.12°00'E., 43.85 feet distance, with a burnt face. This tree is dead and down. (Note: original record N.47°E., 39 Lks.)

The one-quarter section corner common to Sections 35 and 36.

At the corner point I found a standard Bureau of Land Management Cadastral Surveys brass cap monument marked:

DEPT. OF INTERIOR
BUREAU OF LAND MANAGEMENT
T 40 S R3W
1/4
S35 | S36
1964
CADASTRAL SURVEYS

And the following references:

A 10-inch diameter fir bears N.76°42'E., 23.30 feet distance, with a healed blaze. (B.L.M. record N.77°E., 35 Lks.)

An 8-inch diameter fir bears N.82°17'W., 23.10 feet distance, with a healed blaze. (B.L.M. record N.83°W., 35 Lks.)

The one-quarter section corner common to Section 35, Township 40 South, Range 3 West, and Section 2, Township 41 South, Range 3 West, Willamette Meridian.

At the corner point I found a standard Bureau of Land Management Cadastral Survey brass cap monument marked:

DEPT. OF INTERIOR
BUREAU OF LAND MANAGEMENT
T40S R3W
1/4 $\frac{S35}{S2}$
T41S
1964
CADASTRAL SURVEYS

And the following references:

A 10-inch diameter fir bears S.19°14'E., 25.80 feet distance, with a healed blaze. (B.L.M. record S.19°E., 38.5 Lks.)

An 8-inch diameter fir bears N.18°50'E., 21.10 feet distance, with a healed blaze. (B.L.M. record N.20°E., 32 Lks.)

A 26-inch diameter madrone bears S.64°00'E., 39.20 feet distance. This tree is dead and down. (Original record S.64°E., 56 Lks.)

The one-quarter section corner common to Sections 34 and 35, Township 40 South, Range 3 West, Willamette Meridian.

At the corner point I found a standard Jackson County brass cap monument marked:

JACKSON COUNTY
1/4
S34 | S35
1980

And the following references:

A 12-inch diameter pine stump bears S.86°58'E., 5.75 feet distance, with burnt blazes. (Original record N.89°E., 8 Lks.)

A 14-inch diameter fir bears S.38°09'E., 40.52 feet distance, with a healed blaze. (Jackson County record S.37°E., 40.40 feet)

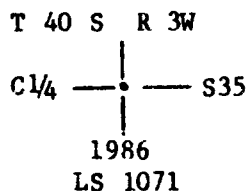
A 14-inch diameter pine bears S.04°32' W., 33.47 feet distance, with a healed blaze. (Jackson County record S.6°W., 33.40 feet)

A 36-inch diameter fir stump bears S.35°02'W., 7.25 feet distance, with a healed blaze. (Original record S.35°W., 7 lks.)

CORNERS ESTABLISHED THIS SURVEY

Center one-quarter corner for Section 35, Township 40 South, Range 3 West, Willamette Meridian.

At the corner point I set a 2 1/2 inch diameter, 30 inch long galvanized iron post with a 2 1/2 inch diameter brass cap marked:



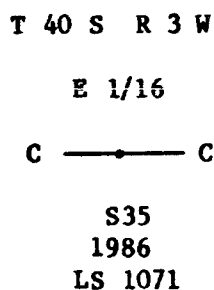
And mark the following references:

A 10-inch diameter fir bears S.73°08'W., 22.38 feet distance, scribed C 1/4 S35 LS1071 BT.

A 9-inch diameter fir bears S.00°35'W., 12.00 feet distance, scribed 'X' BT.

The center east one-sixteenth corner Section 35, Township 40 South, Range 3 West, Willamette Meridian.

At the corner point I set a 2 1/2 inch diameter, 30 inch long galvanized iron post with a 2 1/2 inch diameter brass cap marked:



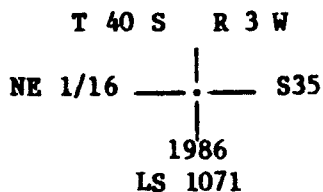
And mark the following references:

A 13-inch diameter fir bears S.01°10'W., 10.64 feet distance, scribed CE 1/16 S35 LS 1071 BT.

A 14-inch diameter fir bears S.86°27'E., 31.96 feet distance, scribed 'X' BT.

Northeast one-sixteenth corner for Section 35, Township 40 South, Range 3 West, Willamette Meridian.

At the corner point I set a 2 1/2 inch diameter, 30 inch long galvanized iron post with a 2 1/2 inch diameter brass cap marked:



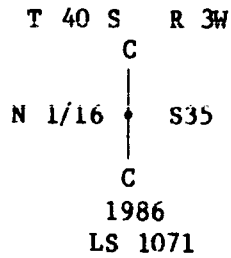
And mark the following references:

A 9-inch diameter pine bears S.76°45'E., 17.50 feet distance, scribed
NE 1/16 S35 LS 1071 BT.

A 12-inch diameter fir bears N.64°28'W., 21.70 feet distance, scribed
NE 1/16 S35 LS 1071 BT.

Center north one-sixteenth corner Section 35, Township 40 South, Range 3
West, Willamette Meridian.

At the corner point I set a 2 1/2 inch diameter, 30 inch long galvanized iron
post with a 2 1/2 inch diameter brass cap monument marked:



And mark the following references:

A 19-inch diameter pine bears N.14°55'E., 37.27 feet distance, scribed
CN 1/16 S35 LS1071 BT.

A 12-inch diameter fir bears N.75°48'W., 53.17 feet distance, scribed
CN 1/16 S35 LS 1071 BT.

January 29, 1986

HAROLD L. CENTER
Registered Professional Land Surveyor
Oregon Certificate No. 1071

REGISTERED
PROFESSIONAL
LAND SURVEYOR

OREGON
HAROLD L. CENTER
JULY 20, 1976
No. 1071

** RECEIVED **
Date 4/1/86 By SL
This survey Consists of:
1 sheet(s) Map
5 page(s) Narrative
JACKSON COUNTY
SURVEYOR