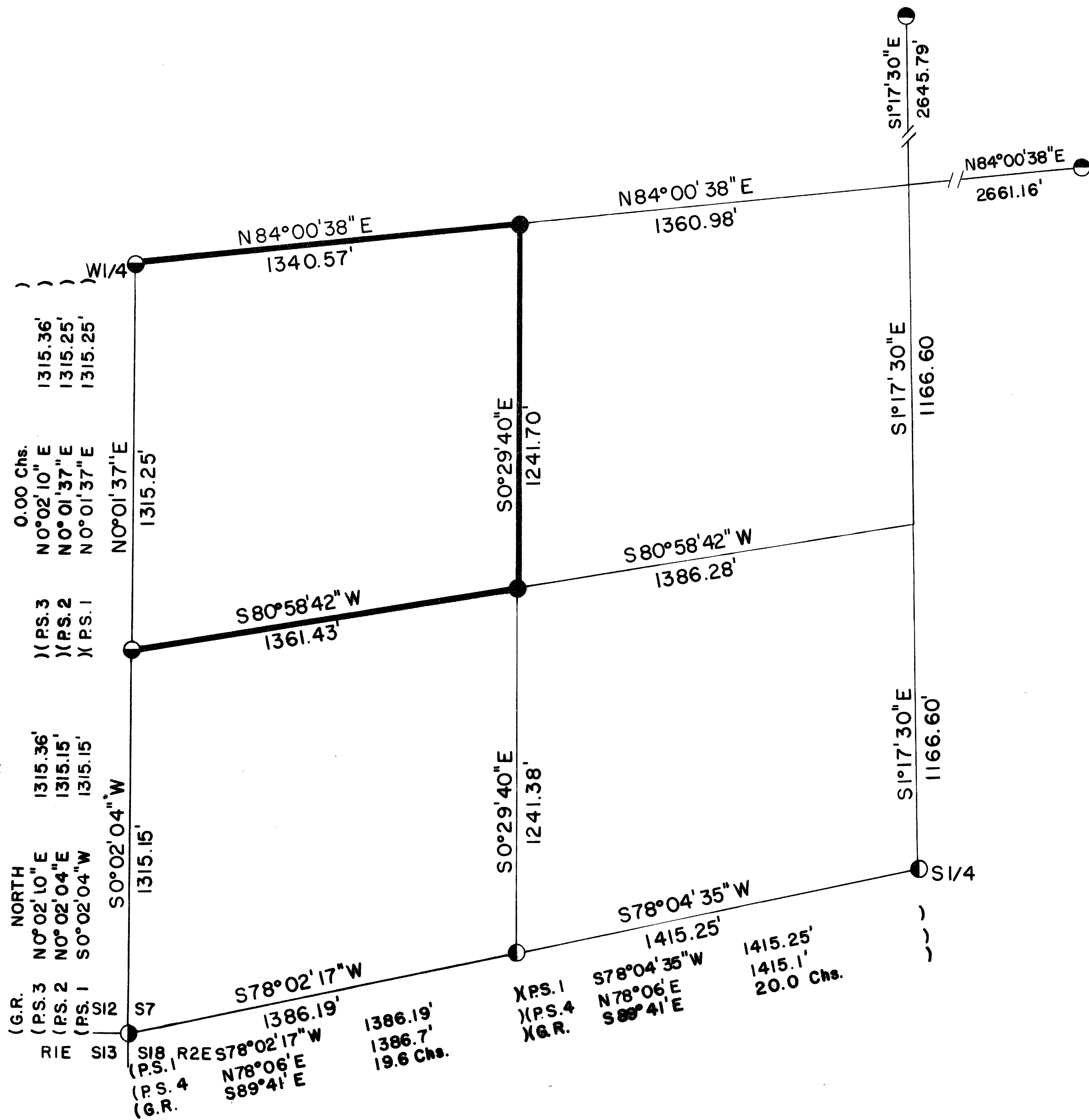


SW 1/4 S7 T35S R2E W.M.



CERTIFICATE OF SURVEY

I, ARTHUR R. RAMBO, REGISTRATION No. 1086 REGISTERED PROFESSIONAL LAND SURVEYOR STATE OF OREGON, HEREBY CERTIFY THAT THIS MAP CORRECTLY REPRESENTS A SURVEY MADE BY ME OR UNDER MY DIRECTION IN CONFORMANCE WITH THE LAWS OF THE STATE OF OREGON.

REGISTERED
PROFESSIONAL
LAND SURVEYOR

Arthur R. Rambo

OREGON
JULY 20, 1976
ARTHUR R. RAMBO
No. 1086

LEGEND

- SET 5/8" BY 30" REBAR WITH 1 1/2" ALUM. CAP
- ⊙ FOUND MONUMENT SET SURVEY No. 7839
- ⊙ FOUND MONUMENT SET SURVEY No. 6235
- ⊙ FOUND MONUMENT SET SURVEY No. 4543
- ⊙ FOUND STANDARD B.L.M. MONUMENT
- P.S. 1 PRIVATE SURVEY No. 7839
- P.S. 2 PRIVATE SURVEY No. 7412
- P.S. 3 PRIVATE SURVEY No. 6235
- P.S. 4 PRIVATE SURVEY No. 4543
- G.R. 1856 GOVERNMENT RECORD
- LINE POSTED AND BLAZED THIS SURVEY

BASIS OF BEARING

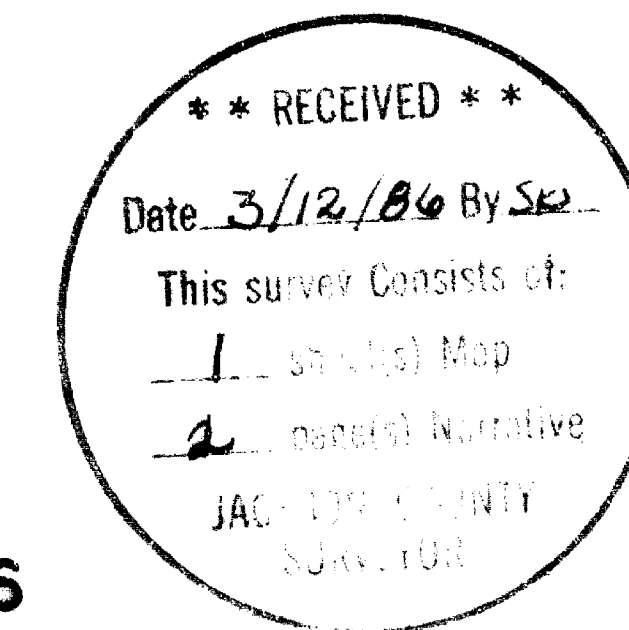
SURVEY No. 7839

SCALE

1" = 300'

DATE

MARCH 12, 1986



Centerwest one-sixteenth corner Section 7, Township 35 South, Range 2 East. At the corner location I set a 5/8 by 30 inch rebar exposed 11 inches in a mound of stone, with a 1 1/2 inch dia. Alum. cap, marked:

T35S R2E
S7
CW + 1/16
LS1086

From which:

- A 5 1/2 inch dia. Fir bears S 42° 44' W 14.7 feet marked CW1/16S7 in upper face, BT in lower face.
- A 5 inch dia. Madrona bears N 37° 23' E 28.3 feet marked CW1/16S7 in upper face, BT in lower face.

** RECEIVED **

Date 3/12/86 By SK

This survey Consists of:

1 sheet(s) Map

2 page(s) Narrative

JACKSON COUNTY
SURVEYOR

REGISTERED
PROFESSIONAL
LAND SURVEYOR

Arthur R. Rambo

OREGON
JULY 30, 1976
ARTHUR R. RAMBO
No. 1086

SURVEY NARRATIVE TO COMPLY WITH O.R.S. 209.250

Location: Southwest quarter of Section 7, Township 35 South, Range 2 East, Willamette Meridian, Jackson County, Oregon.

Survey for: Medford Resources Corporation
P. O. Box 550
Medford, Oregon 97501

Survey by: Arthur R. Rambo PLS 1086
735 Vista Park Drive
Eagle Point, Oregon 97524

Date: March 11, 1986

Purpose: To mark and post the boundaries of Medford Resources Corporation land in the Southwest quarter of Section 7, as shown on the plat to accompany this narrative.

Procedure: The original survey of Section 7 was completed by Nathaniel Ford under contract #58 dated April 18, 1855.

I found monuments to reestablish and establish the following corners. The Southwest corner I found a Bureau of Land Management monument to reestablish the corner from original evidence. The South one-quarter corner I found a monument set on Survey #4543 to reestablish the corner, set from evidence of the Jackson County reestablishment of the corner from original evidence. The West 1/16 corner common to Section 7 and 18 I found a monument set on Survey #4543. The West one-quarter corner I found a monument to reestablish the corner, by proportionate measurement on Survey #6235. The South 1/16 corner common to S7, T35S, R2E and S12, T35S, R2E I found a monument set on Survey #6235. The North one-quarter corner and the East one-quarter corner I found a monument to reestablish the corners by proportionate measurement on Survey #7839. I calculated the subdivision of the Southwest quarter of Section 7 from the closed traverse Survey #7839, which tied to all the above corners of said Section 7. I then ran a closed traverse survey around the Northwest quarter of the Southwest quarter of said Section 7. Beginning at the South 1/16 corner common to S7, T35S, R2E and S12, T35S, R1E, from Survey #7839, then to the Southwest 1/16 corner of Section 7; then to the Centerwest 1/16 corner; then to the one-quarter corner common to S7, T35S, R2E and S12, T35S, R1E closing to Survey #7839. I set the corners and posted line as shown on the plat to accompany this narrative.

CORNERS SET THIS SURVEY:

All measurements to bearing trees are to the center of tree at the base unless otherwise stated. All bearing trees have a brass washer marked LS 1086 nailed to the BT face of bearing trees.

Southwest one-sixteenth corner Section 7, Township 35 South, Range 2 East. At the corner location I set a 5/8 by 30 inch rebar, exposed 10 inches in a mound of stone, with a 1½ inch dia. Alum. cap, marked:

T35S R2E
S7
SW + 1/16
LS1086

From which:

- A 12 inch dia. Oak bears N 29° 43' E 18.1 feet marked SW1/16S7 in upper face, BT in lower face.
- A 5½ inch dia. Oak bears S 61° 49' W 28.8 feet marked SW1/16S7 in upper face, BT in lower face.