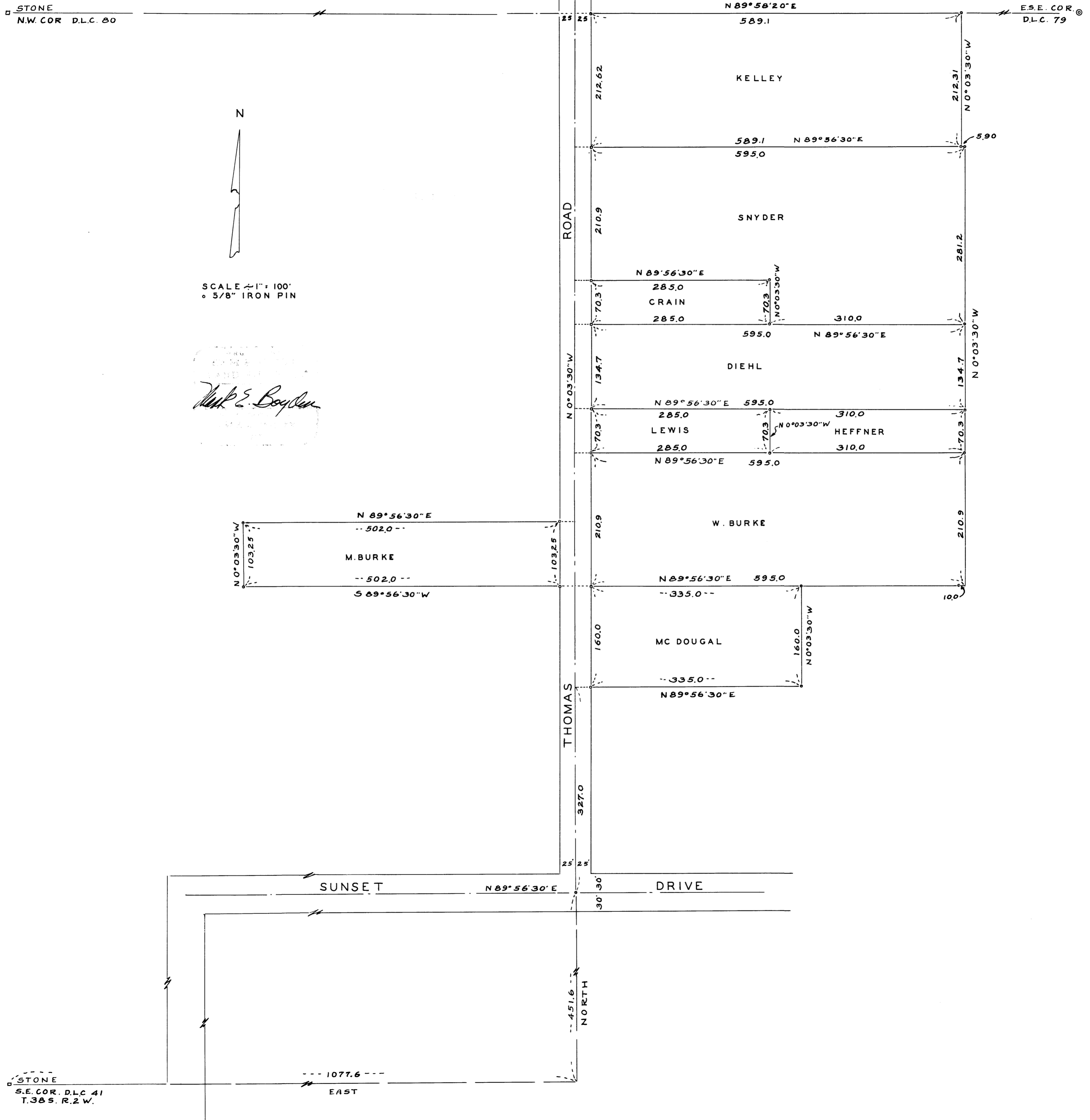


E. J. DIEHL ET AL  
SEC. 35, T. 37 S., R. 2 W.  
M. E. BOYDEN AUG. 1957



## Survey Narrative to Comply with Paragraph 209.250

## Oregon Revised Statutes

FOR: E. N. Diehl et al.

PURPOSE: To survey, monument and furnish corrected descriptions for several tracts being Lots, or portions of Lots, of Hen Acres an unrecorded subdivision located in Section 35, Township 37 South, Range 2 West.

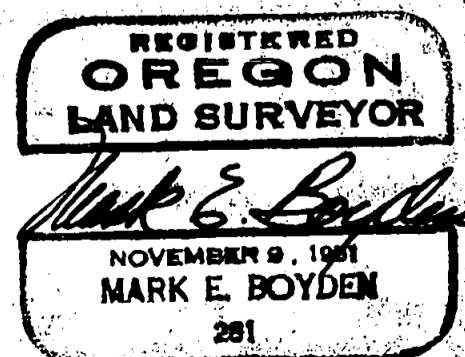
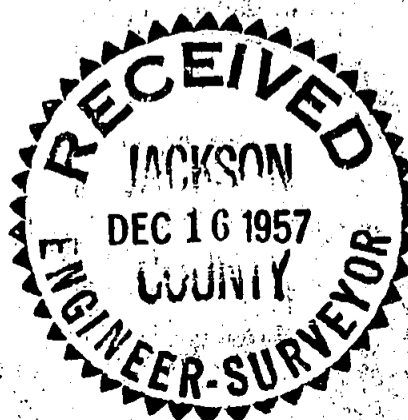
PROCEDURE: From previous surveys made by this office it was known that the record ties reported for said Lots develops an error of about 30.0 feet North and South between the Southeast corner of D.L.C. 41, Township 38 South, Range 2 West, and the centerline intersection of Thomas Road and Sunset Drive. However, the record frontages along Thomas Road to the old lot corners on the South line of Mountain View Subdivision (unrecorded) are reasonably correct.

For the purpose of this survey it was considered that each tract would have a record frontage along Thomas Road with distances measured from the center of Sunset Drive, except the most Northerly Tract which would bound the true North line of D.L.C. 80.

Division lines were established at right angles to Thomas Road and a record distance East or West, from the centerline thereof.

Iron pin monuments were set as shown on the map to accompany this report. Meridian was taken from Jackson County Road Records of the survey of Thomas Road.

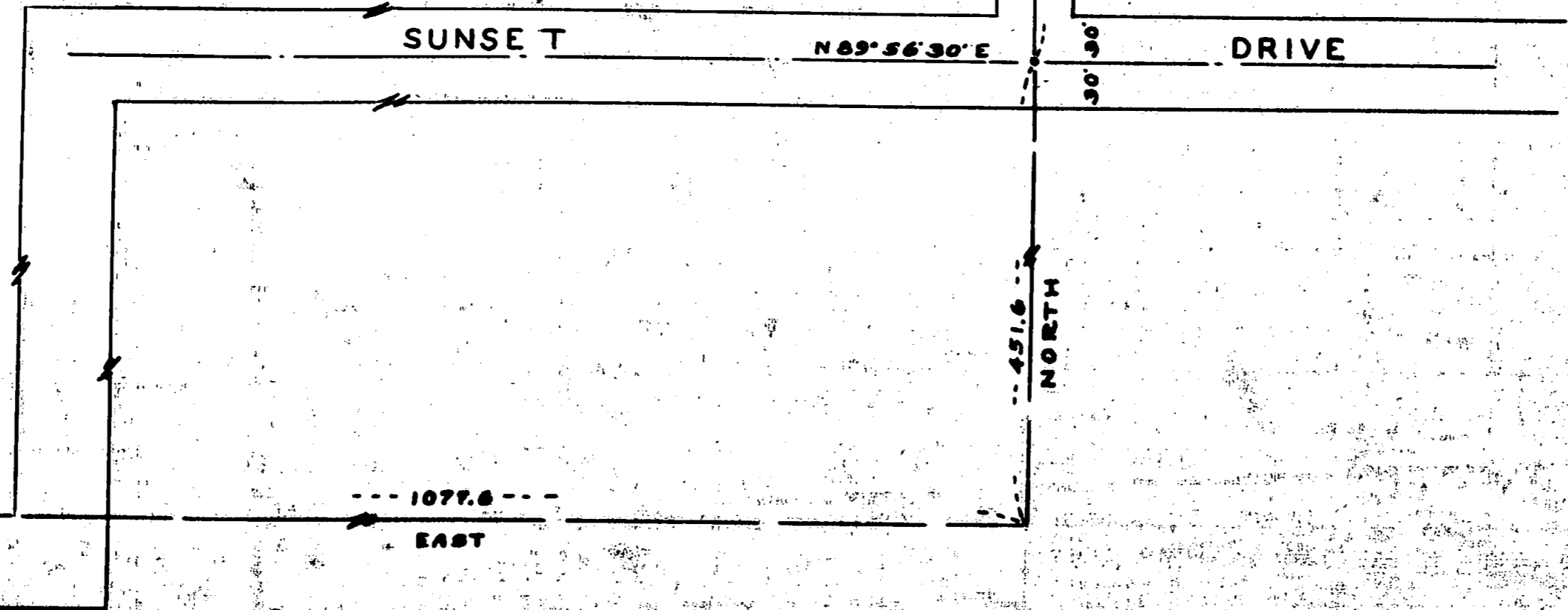
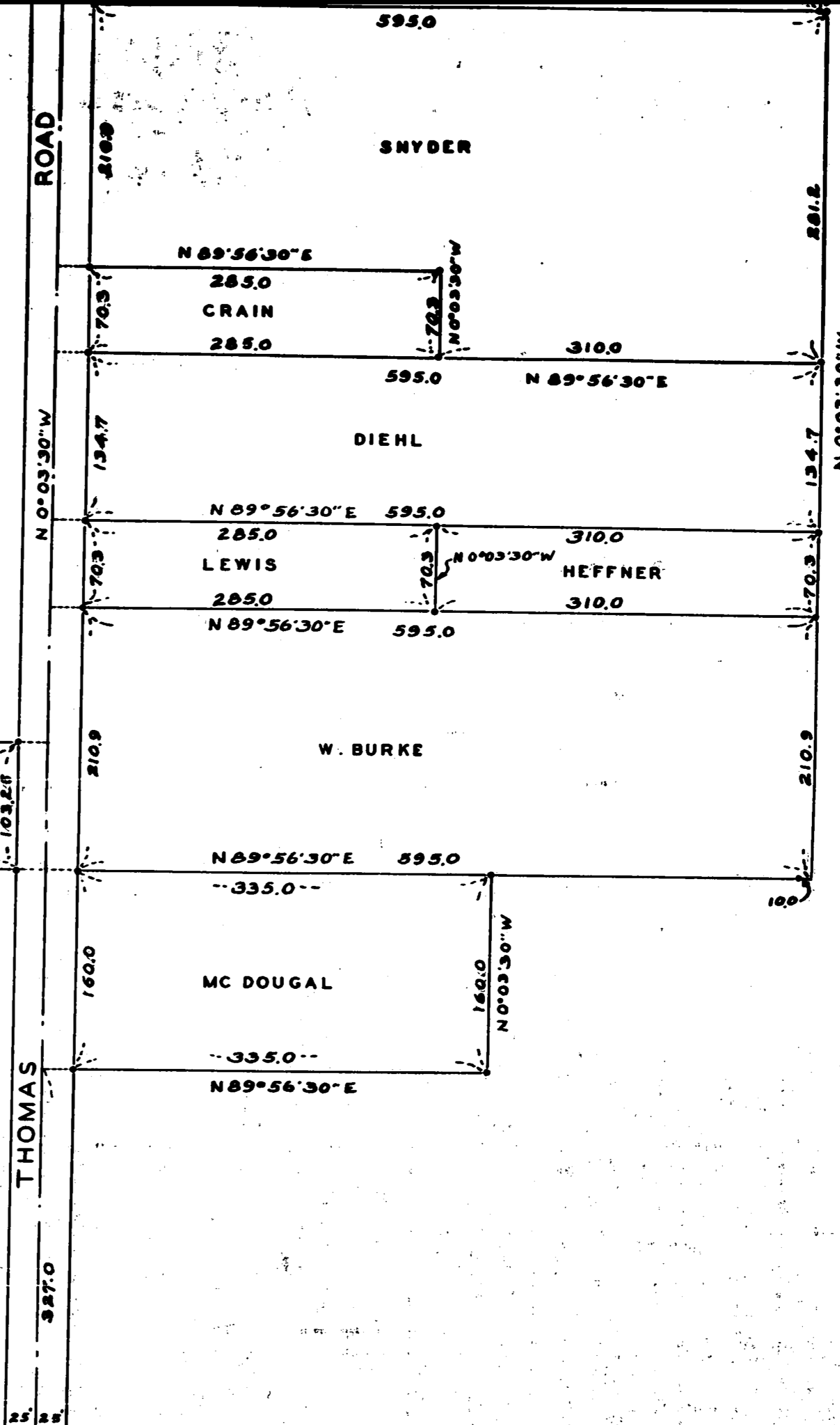
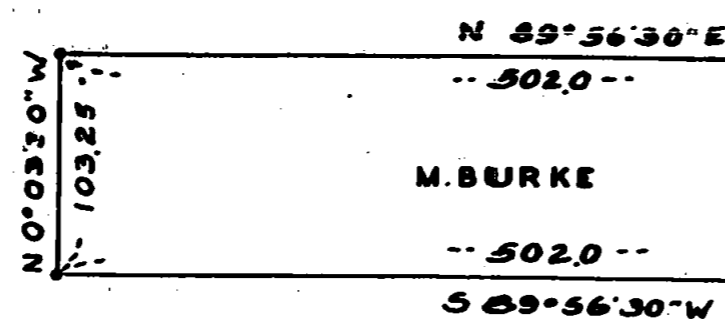
August 12, 1957





SCALE 4" = 100'  
• 5/8" IRON PIN

REGISTERED  
OREGON  
LAND SURVEYOR  
*Mark E. Boydem*  
NOVEMBER 9, 1951  
MARK E. BOYDEM  
281



STONE  
S.E. COR. D.L.C. 41  
T.36S. R.2W.