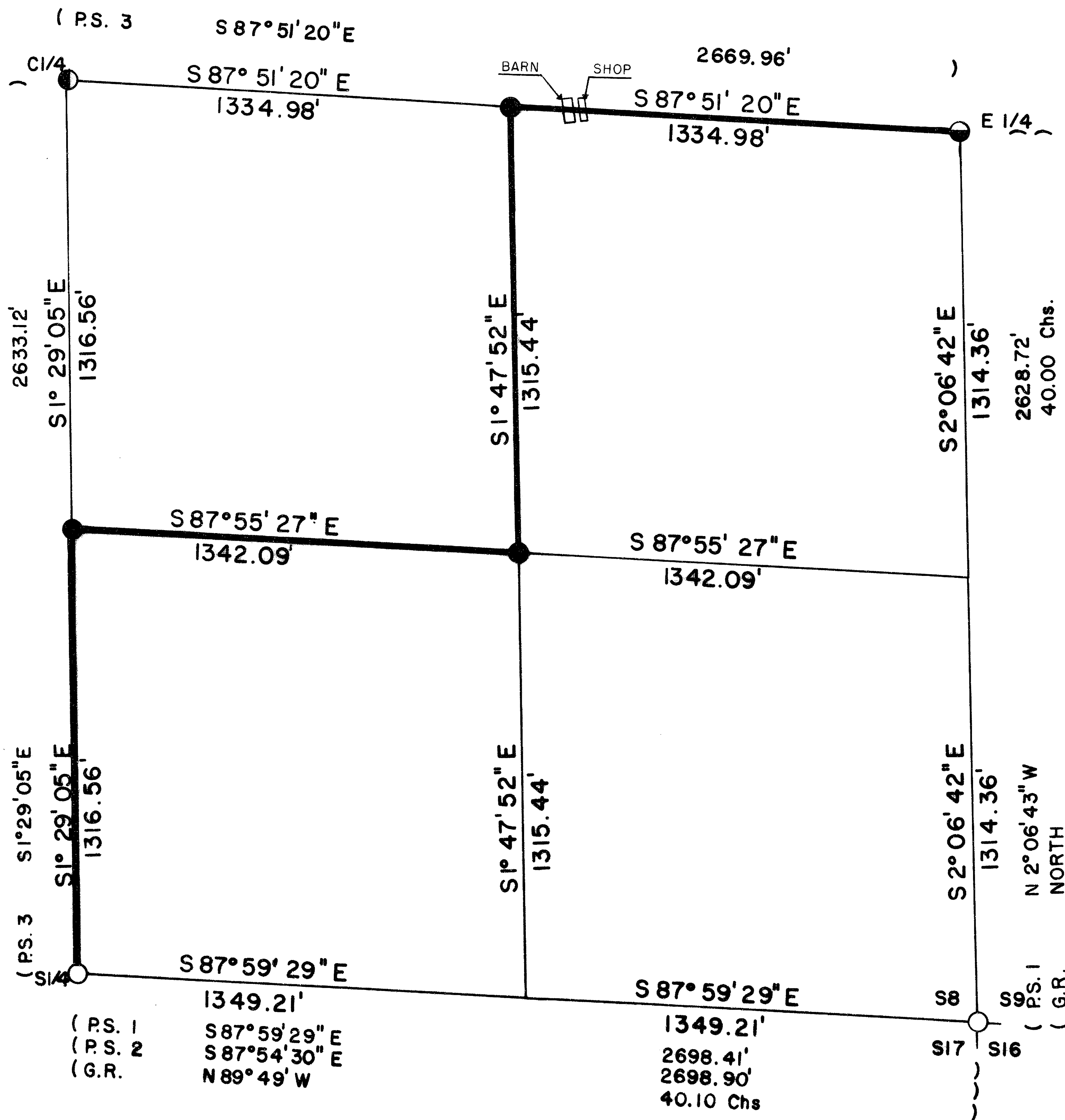


SE 1/4 S8 T35S R2E W.M.



CERTIFICATE OF SURVEY

I, ARTHUR R. RAMBO, REGISTRATION No. 1086 REGISTERED PROFESSIONAL LAND SURVEYOR STATE OF OREGON, HEREBY CERTIFY THAT THIS MAP CORRECTLY REPRESENTS A SURVEY MADE BY ME OR UNDER MY DIRECTION IN CONFORMANCE WITH THE LAWS OF THE STATE OF OREGON.

REGISTERED
PROFESSIONAL
LAND SURVEYOR

Arthur R. Rambo

OREGON
JULY 28, 1974
ARTHUR R. RAMBO
No. 1086

LEGEND

- SET 5/8" BY 30" REBAR WITH 1 1/2" ALUM. CAP
- ⊙ FOUND MONUMENT SET SURVEY No. 8369
- FOUND STANDARD B.L.M. MONUMENT
- ⊙ FOUND MONUMENT SET SURVEY No. 7839
- P.S. 1 PRIVATE SURVEY No. 7839
- P.S. 2 PRIVATE SURVEY No. 4565
- P.S. 3 PRIVATE SURVEY No. 8369
- LINE POSTED AND BLAZED THIS SURVEY
- G.R. 1856 GOVERNMENT RECORD

BASIS OF BEARING

SURVEY No. 7839

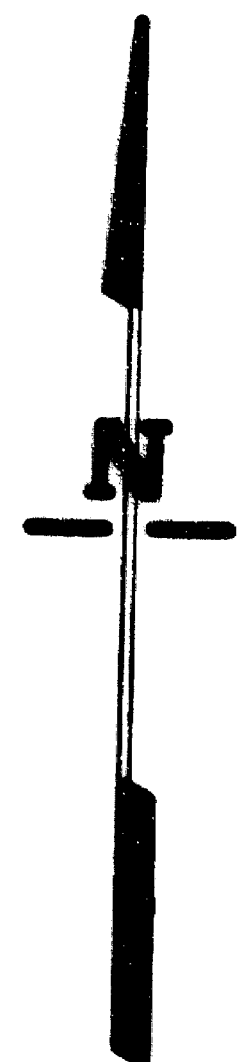
SCALE

1" = 300'

DATE

MARCH 12, 1986

** RECEIVED **
Date: 3/12/86 By: BRK
This survey consists of:
— 1 sheets
— 2 photos Narrative
JACKSON COUNTY
SURVEYOR



From which:

A 7½ inch dia. Oak bears S 68° 29' E 9.5 feet marked SE1/16S8 in upper face,
BT in lower face.

A 6 inch dia. Oak bears N 9° 58' E 8.3 feet marked SE1/16S8 in upper face,
BT in lower face.

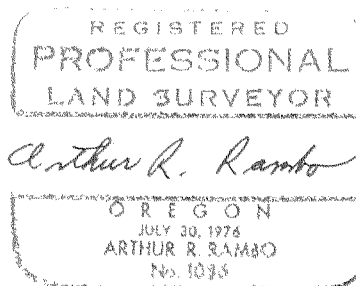
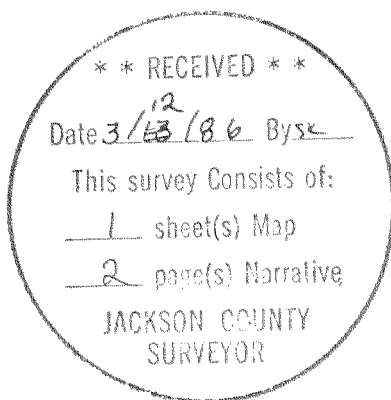
Centereast one-sixteenth corner Section 8, Township 35 South, Range 2 East. At the
corner location I set a 5/8 by 30 inch rebar exposed 8 inches with a 1½ inch dia.
Alum. cap, marked:

T35S R2E
S8
CE + 1/16
LS1086

From which:

A 6 inch dia. Oak bears N 43° 30' E 33.2 feet marked CE1/16S8 in upper face,
BT in lower face.

A 6½ inch dia. Pine bears S 18° 05' E 139.8 feet marked CE1/16S8 in upper face,
BT in lower face.



SURVEY NARRATIVE TO COMPLY WITH O.R.S. 209.250

Location: Southeast quarter of Section 8, Township 35 South, Range 2 East, Willamette Meridian, Jackson County, Oregon.

Survey for: Medford Resources Corporation
P. O. Box 550
Medford, Oregon 97501

Survey by: Arthur R. Rambo PLS 1086
735 Vista Park Drive
Eagle Point, Oregon 97524

Date: March 11, 1986

Purpose: To mark and post the boundaries of Medford Resources Corporation land in the Southeast quarter of Section 8, as shown on the plat to accompany this narrative.

Procedure: The original survey of Section 8 was completed by Nathaniel Ford under contract #58 dated April 18, 1855. The Southeast corner and South one-quarter corner have monuments set by the Bureau of Land Management Cadastral Surveyors, from original evidence. The East one-quarter corner has a monument set by proportionate measurement on Survey Number 7839. The Center one-quarter corner has a monument set on Survey Number 8369. I calculated the subdivision of the Southeast one-quarter of Section 8 from Survey Number 7839. I then ran a closed traverse survey from the South one-quarter corner (Survey Number 7839) to the Centersouth one-sixteenth corner, then to the Southeast one-sixteenth corner, then to the Centereast one-sixteenth corner, then to the East one-quarter corner closing on Survey Number 7839. I found a barn and shop built on the North line of the Northeast quarter of the Southeast quarter, as shown on the plat to accompany this narrative.

CORNERS SET THIS SURVEY:

All measurements to bearing trees are to the center of tree at the base unless otherwise stated. All bearing trees have a brass washer marked LS 1086 nailed to the BT face of tree.

Centersouth one-sixteenth corner Section 8, Township 35 South, Range 2 East. At the corner location I set a 1½ inch dia. Alum. cap on the 5/8 rebar set on Survey No. 8369, stamped cap:

T35S R2E
S8
CS + 1/16
LS1086

From which:

- An 8½ inch dia. Oak bears N 37° 40' E 31.3 feet marked CS1/16S8 in upper face, BT in lower face.
- An 11 inch dia. Pine bears S 19° 28' E 23.2 feet marked CS1/16S8 in upper face, BT in lower face.

Southeast one-sixteenth corner Section 8, Township 35 South, Range 2 East. At the corner location I set a 5/8 by 30 inch rebar exposed 12 inches in a mound of stone, with a 1½ inch dia. Alum. cap, marked:

T35S R2E
S8
SE + 1/16
LS1086