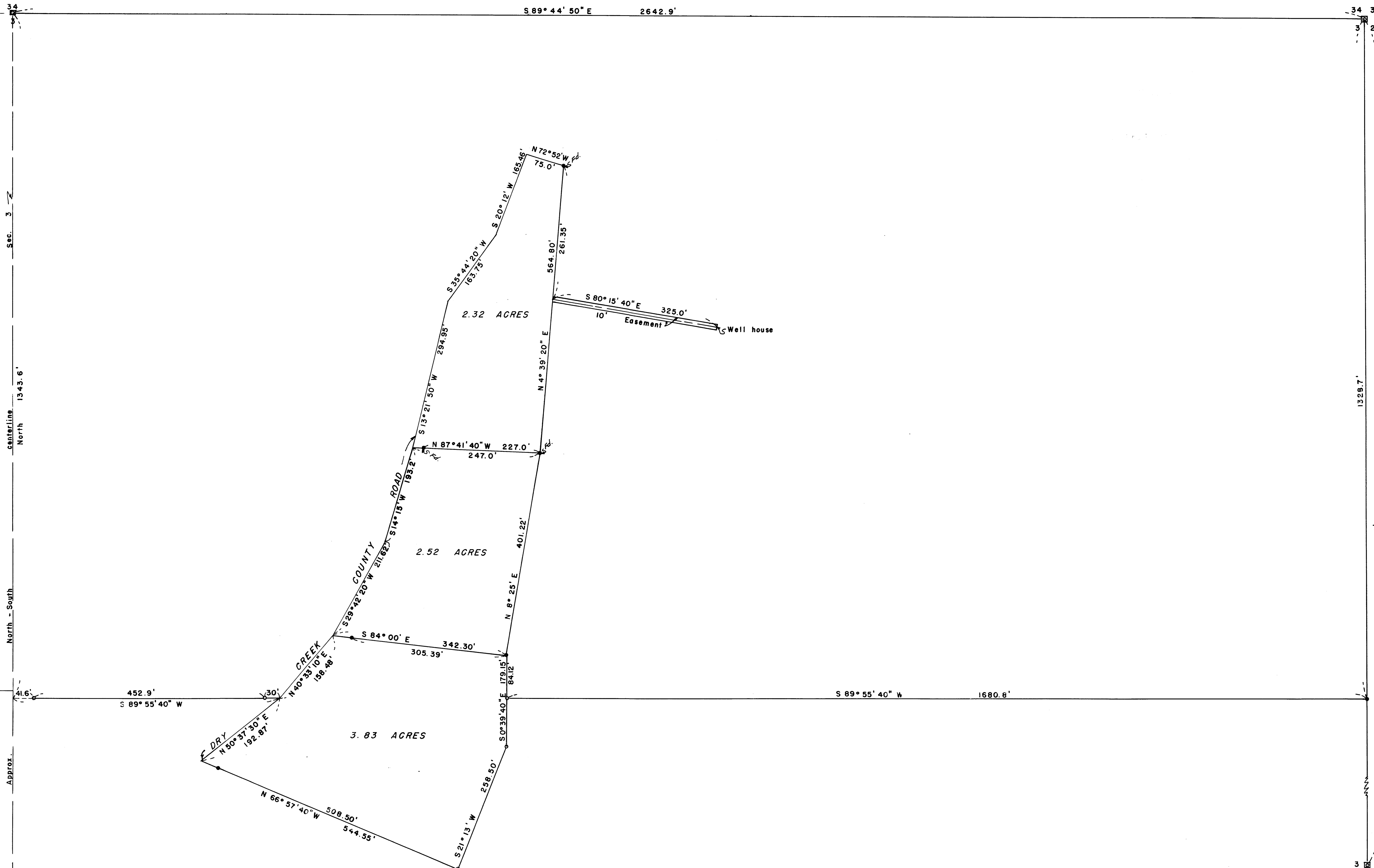


Survey For
 T. C. FLORY & M. E. DYER
 Located In Section 3, T37SRIW
 By: Mark E. Boyden Aug. 1957.

NE 1/4 of the NW 1/4
 SEC. 3



SCALE: 1" = 100'
 Meridian by Solar Observation

- Fd. concrete monument with bronze disk
- Set 3/4" iron bolt
- Set 1/2" iron pipe

Mark E. Boyden

Survey Narrative to Comply with Paragraph 209.250,

Oregon Revised Statutes

FOR: T. C. Flory and M. E. Dyer

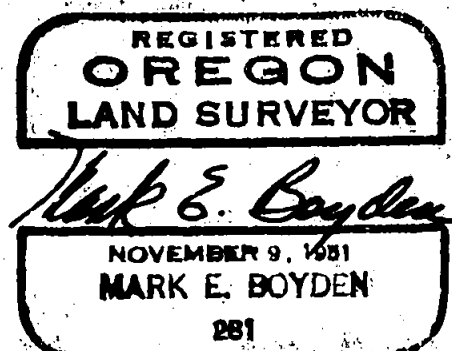
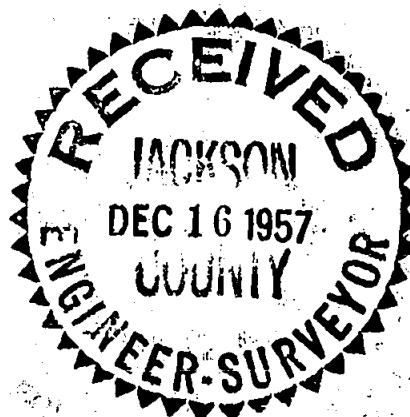
PURPOSE: To monument two new building sites, revise the one previously surveyed by this office, and monument a division line through the Northeast $\frac{1}{4}$ of Section 3, Township 37 South, Range 1 West to separate the Flory and Dyer ownerships.

PROCEDURE: Traversed South from the Northeast corner of Section 3, to the East Quarter corner of said Section, setting the division line monument as shown. Thence along said division line traversed Westerly and thence Northerly to the North Quarter corner of said Section, closing on work previously done by this office (see Recorded Survey No. 677). No attempt was made to determine the exact position of the South line of the North-Half of the Northeast $\frac{1}{4}$ of Section 3, as Flory owns the whole Northeast $\frac{1}{4}$, and the exact position of the North-South centerline was not determined at this time. A monument was set near the West end of the division line to hold the position North and South with the description running 41.6 feet, more or less to the intersection of the North-South centerline of said Section.

The Dry Creek County Road has no definite monumented location and the descriptions were run to points near the center of the existing road.

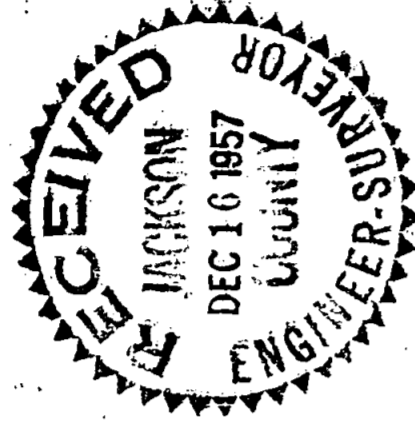
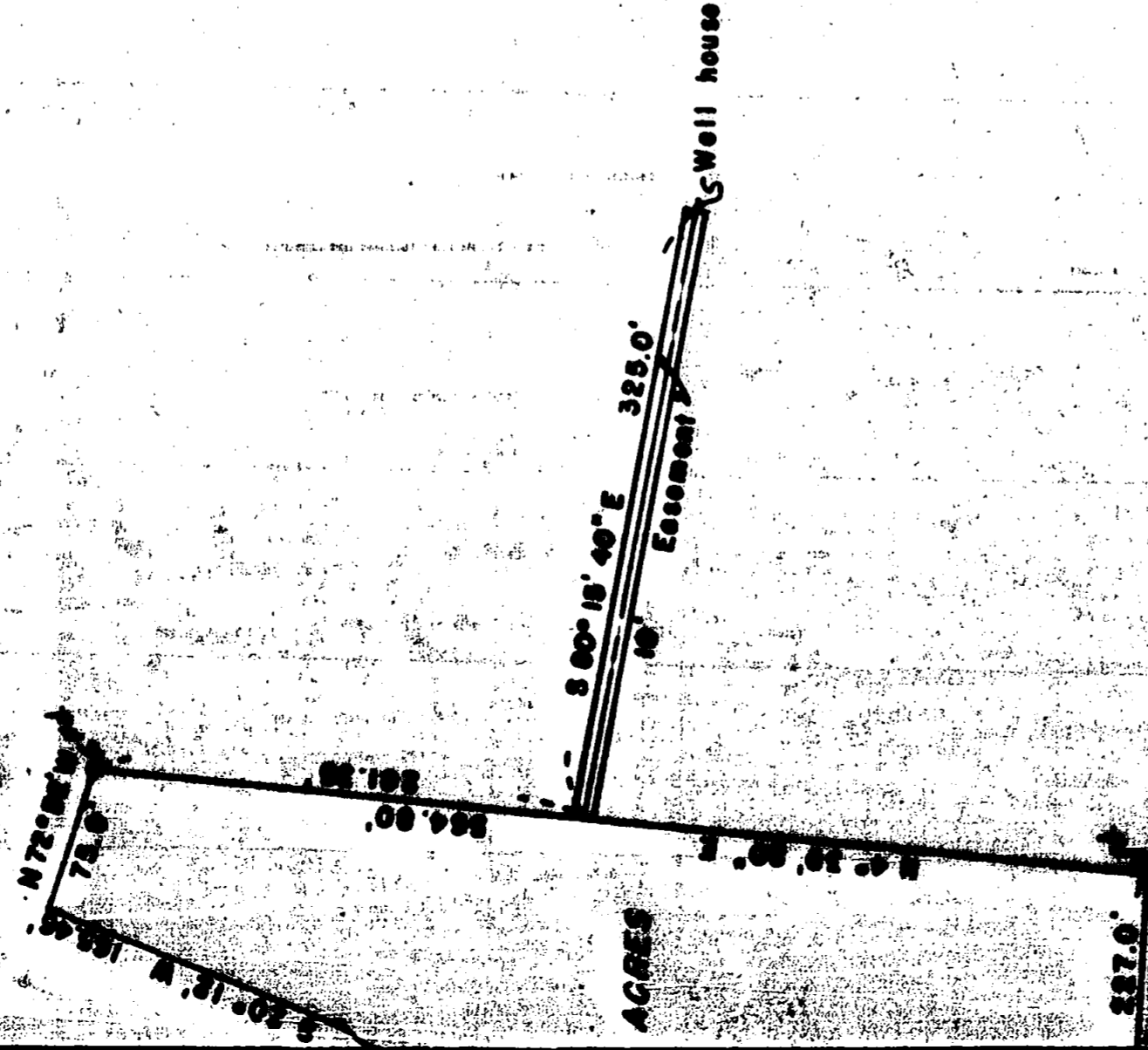
Monumented the parcels as shown, using the Solar Meridian from Survey No. 677 for the basis of bearings.

August 1957



Survey For
C. FLORY B. M.E. DYER
located in Section 3, T37SRIW
Mark E. Boyden Aug. 1957.

S 89° 44' 50" E 2642.9



3.01.08

S 89° 55' 40" W 1680.6'