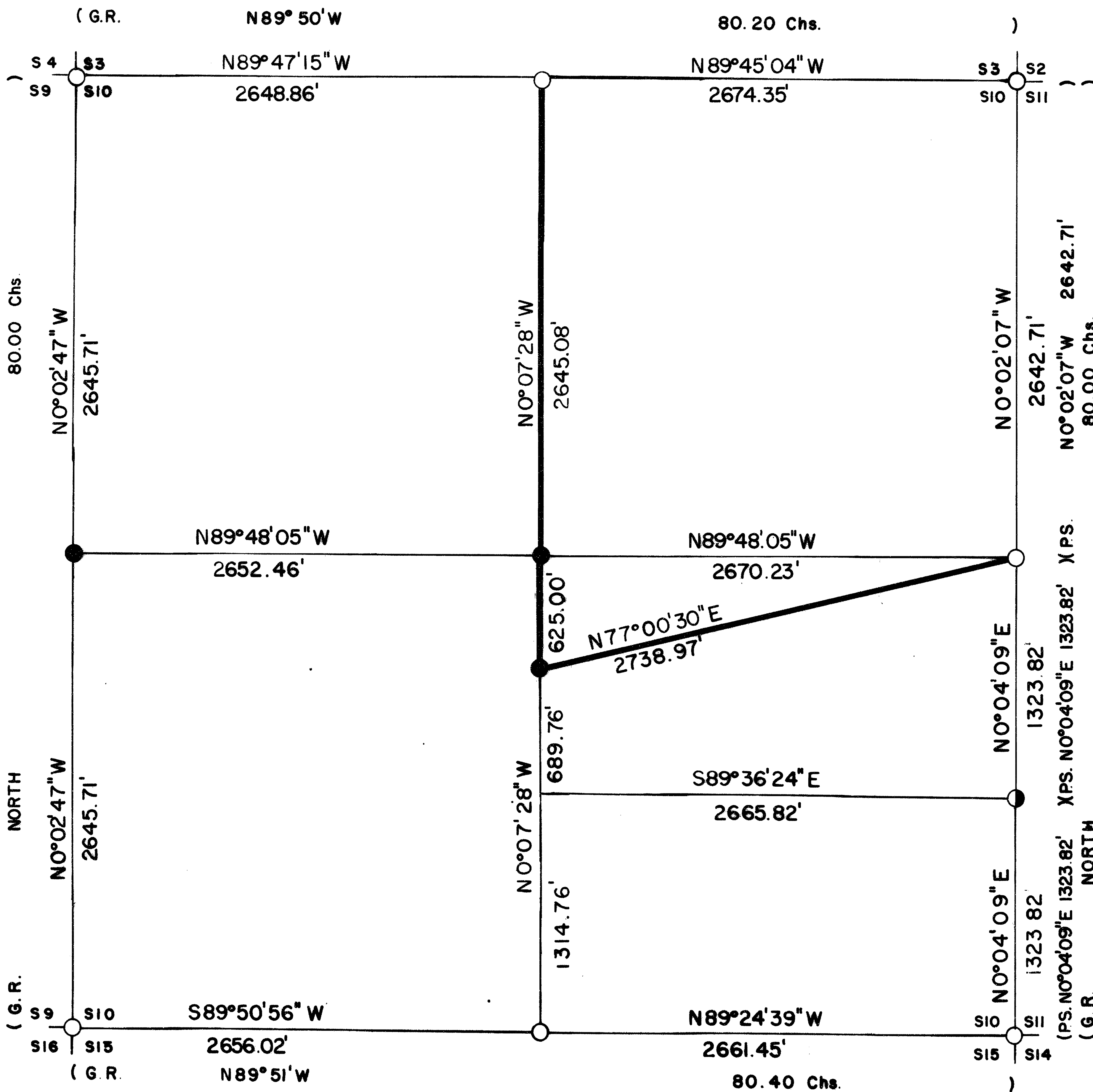
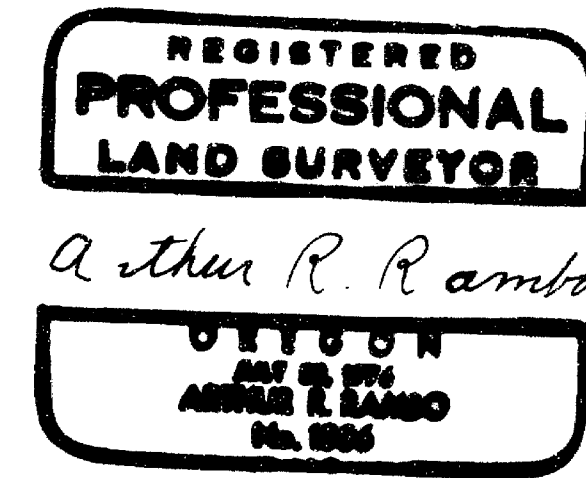


S10 T35S R1E W.M.



CERTIFICATE OF SURVEY

I, ARTHUR R. RAMBO, REGISTRATION No. 1086 REGISTERED PROFESSIONAL LAND SURVEYOR STATE OF OREGON, HEREBY CERTIFY THAT THIS MAP CORRECTLY REPRESENTS A SURVEY MADE BY ME OR UNDER MY DIRECTION IN CONFORMANCE WITH THE LAWS OF THE STATE OF OREGON.



LEGEND

- FOUND MONUMENT SET SURVEY No. 7365
- SET 5/8" BY 30" REBAR WITH 1 1/2" ALUM. CAP
- FOUND COUNTY MONUMENT
- G.R. 1855 GOVERNMENT RECORD
- P.S. PRIVATE SURVEY No 7365
- LINE POSTED AND BLAZED THIS SURVEY

BASIS OF BEARING

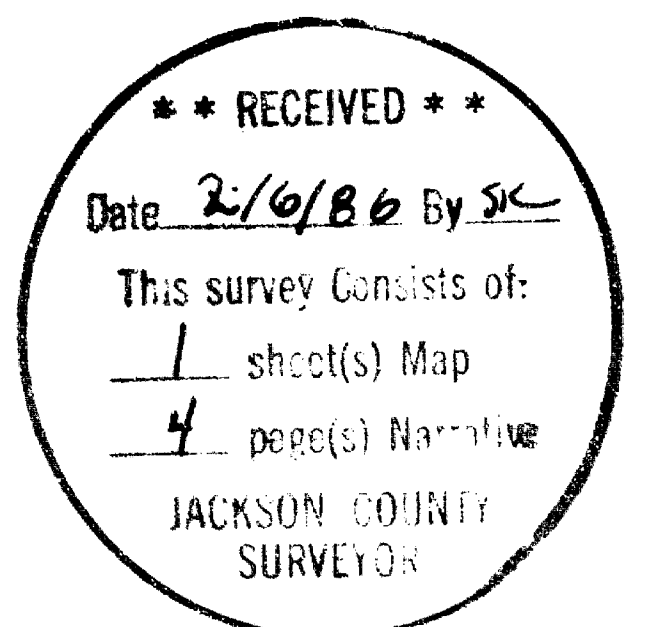
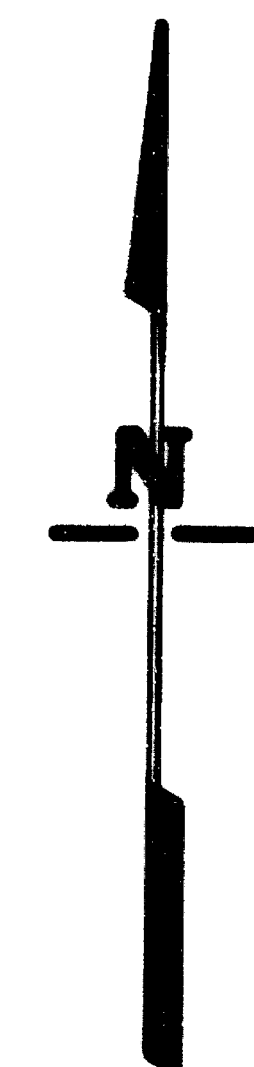
SURVEY No 7365

SCALE

1" = 500'

DATE

FEBRUARY 4, 1986



SURVEY NARRATIVE TO COMPLY WITH O.R.S. 209.250

Location: Section 10, Township 35 South, Range 1 East, Willamette Meridian, Jackson County, Oregon.

Survey for: Medford Resources Corporation
P. O. Box 550
Medford, Oregon 97501

Survey by: Arthur R. Rambo PLS 1086
735 Vista Park Drive
Eagle Point, Oregon 97524

Date: February 4, 1986

Purpose: To mark and post the boundaries of Medford Resources Corporation land in the Northeast quarter and the North half of the Southeast quarter of said section, as shown on the plat to accompany this narrative.

Procedure: A search of the records revealed that the original survey of Section 10 was completed by Ives and Hyde under contract #47 dated August 18, 1854. A resurvey of the East line of Section 10 was completed by Arthur R. Rambo (PLS 1086) on survey #7365 dated July 26, 1978. The Northeast, East $\frac{1}{4}$, Southeast, South $\frac{1}{4}$, Southwest, Northwest, and North $\frac{1}{4}$ corners of Section 10 were reestablished by the Jackson County Surveyor from original evidence. No evidence of the West $\frac{1}{4}$ corner could be found.

I performed a closed traverse survey beginning at the Southeast corner from survey #7365, then I proceeded to the South $\frac{1}{4}$ corner, then to the Southwest corner, then to the Northwest corner, then to the North $\frac{1}{4}$ corner, then to the Northeast corner closing to survey #7365. I calculated a position for the West $\frac{1}{4}$ corner and made another search for the corner. I could find no original evidence of the corner. I set the corner by single proportion measurement. Then I performed a closed traverse of the interior lines, beginning at the North $\frac{1}{4}$ corner, then running South to the Center $\frac{1}{4}$ corner, then S $0^{\circ} 09' 20''$ E 625.00 feet along the North-South centerline to the property corner, then N $77^{\circ} 00' 30''$ E 2738.97 feet closing to the East $\frac{1}{4}$ corner. I set corners and posted lines as shown on the plat to accompany this narrative.

CORNERS FOUND AND ACCEPTED FOR CONTROL:

All measurements to bearing trees are to the center of tree at the base unless otherwise stated.

Section corner common to Sections 10, 11, 14, and 15, Township 35 South, Range 1 East. At the corner location I found a $2\frac{1}{2}$ inch dia. brass cap on a $1\frac{1}{4}$ inch dia. iron pipe, exposed 28 inches in a mound of stone, Jackson County monument marked:

	T35S		R1E	
	Sec 10		11	Cor
	15		14	
			C.S.	
			1967	

From which:

- An 8 inch dia. Oak bears S $27^{\circ} 28'$ W 47.7 feet with scribe visible in upper face.
- A 16 inch dia. Oak bears S $75^{\circ} 08'$ W 84.4 feet with rotted out face.
- An $11\frac{1}{2}$ inch dia. Pine bears N $30^{\circ} 47'$ W 122.3 feet with healed face.
- A 22 inch dia. Oak bears N $54^{\circ} 22'$ E 40.6 feet with BT visible in lower face.

One-quarter corner common to Sections 10 and 15, Township 35 South, Range 1 East. At the corner location I found a 1 inch dia. iron pipe exposed 6 inches in a mound of stone set by Jackson County Surveyor.

From which:

- A 9 inch dia. Cedar bears N 10° 56' W 41.25 feet with CS marked in upper burned face, BT marked in burned lower face.
- A 12 inch dia. Oak bears N 87° 21' W 46.8 feet with unopened faces.
- An 11½ inch dia. Pine bears S 18° 01' E 46.3 feet with scribe visible in both upper and lower faces.

Section corner common to Sections 9, 10, 15, and 16, Township 35 South, Range 1 East. At the corner location I found a 2 inch dia. iron pipe exposed 7 inches in a mound of stone set by the Jackson County Surveyor.

From which:

- A 12 inch dia. Oak bears N 30° 17' E 8.6 feet with healed face.
- A 9 inch dia. Oak stub bears N 27° 23' W 103.3 feet with unopened upper and lower faces.
- A 9 inch dia. Oak bears S 61° 56' W 68.9 feet with unopened upper face, BT in lower face.
- An 18 inch dia. Oak stub bears S 35° 50' W 58.9 feet with upper face rotted out.
- A 23 inch dia. dead and down Oak bears S 31° 34' E 74.9 feet, to the base of tree, with both upper and lower faces rotted out.
- An 11 inch dia. Oak bears S 42° 12' E 110.0 feet with unopened upper and lower faces.

Section corner common to Sections 3, 4, 9, and 10, Township 35 South, Range 1 East. At the corner location I found a 2½ inch dia. brass cap in a mound of stone, Jackson County monument marked:

T35S	R1E
<u>S4</u>	! <u>S3</u>
S9	S10

Jackson County 1974

From which:

- A 17½ inch dia. Oak bears S 37° 03' E 45.5 feet with an opened face.
- A 12½ inch dia. Fir bears S 67° 17' W 18.2 feet with unopened upper and lower face.
- A 24 inch dia. Pine snag bears N 47° 10' W 66.7 feet marked CS in upper face, BT in lower face.
- A 10½ inch dia. Oak bears N 24° 34' W 36.9 feet with scribe visible in upper face.
- A 20½ inch dia. Madrona bears N 31° 42' E 24.3 feet marked CS in upper face, BT in lower face.
- A 12½ inch dia. Fir snag bears S 63° 35' E 33.0 feet marked CS in upper face, BT in lower face.

One-quarter corner common to Sections 3 and 10, Township 35 South, Range 1 East. At the corner location I found a 1 inch dia. pipe exposed 2 inches, Jackson County Surveyor monument.

From which:

- A 24½ inch dia. Pine bears S 59° 54' W 48.1 feet with upper face chopped out and rehealed, lower face unopened.
- An 8 inch dia. Oak bears N 67° 46' E 44.9 feet with unopened upper and lower faces.

Section corner common to Sections 2, 3, 10, and 11, Township 35 South, Range 1 East. At the corner location I found a 2½ inch dia. brass cap in a mound of stone, Jackson County Surveyor monument marked:

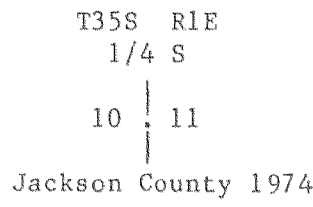
T35S	R1E
<u>S3</u>	! <u>S2</u>
S10	S11

Jackson County 1974

From which:

- A 23½ inch dia. Pine bears N 42° 42' W 110.8 feet with unopened face.
- A 17 inch dia. Fir snag bears N 42° 58' E 172.7 feet marked CS in upper face, BT in lower face.
- A 37 inch dia. Pine bears N 83° 39' E 72.2 feet marked CS in upper face, BT in lower face.
- A 7 inch dia. Oak bears S 60° 39' E 61.7 feet with scribe visible in chopped out lower face.
- A 16 inch dia. Pine bears S 49° 20' E 51.8 feet marked CS in upper face, BT in lower face.
- An 18½ inch dia. Fir snag bears S 32° 40' E 85.3 feet with scribe visible in partially healed face.
- A 9½ inch dia. Oak bears S 17° 26' W 33.0 feet with chopped out face.
- A 15 inch dia. Fir bears S 27° 16' W 34.3 feet with unopened upper and lower faces.

One-quarter corner common to Sections 10 and 11, Township 35 South, Range 1 East. At the corner location I found a 2½ inch dia. brass cap, exposed 12 inches in a mound of stone, Jackson County Surveyor monument marked:



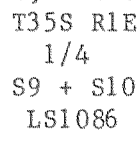
From which:

- A 10 inch dia. Oak bears N 82° 27' W 16.7 feet with reverse scribes on chips chopped out of face.
- A 10 inch dia. Fir bears N 71° 43' W 33.5 feet with unopened upper and lower faces.
- An 11½ inch dia. Cedar bears N 30° 45' E 30.1 feet marked CS in upper face, BT in lower face.
- A 27 inch dia. Pine bears S 87° 48' E 8.0 feet with unopened upper and lower faces.

CORNERS SET THIS SURVEY:

All measurements to bearing trees are to the center of tree at the base unless otherwise stated. All bearing trees have a brass washer marked LS 1086 nailed to the BT face of tree.

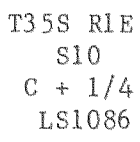
One-quarter corner common to Sections 9 and 10, Township 35 South, Range 1 East. At the corner location I set a 5/8 by 30 inch rebar with a 1½ inch dia. Alum. cap, exposed 10 inches in a mound of stone, marked:



From which:

- A 10½ inch dia. Madrona bears N 41° 38' W 27.1 feet marked 1/4S9 in upper face, BT in lower face.
- A 10 inch dia. Fir bears N 35° 58' E 58.2 feet marked 1/4S10 in upper face, BT in lower face.

Center one-quarter corner Section 10, Township 35 South, Range 1 East. At the corner location I set a 5/8 by 30 inch rebar with a 1½ inch dia. Alum. cap, exposed 15 inches in a mound of stone, marked:



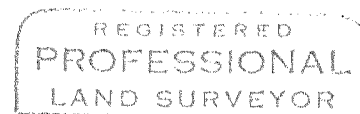
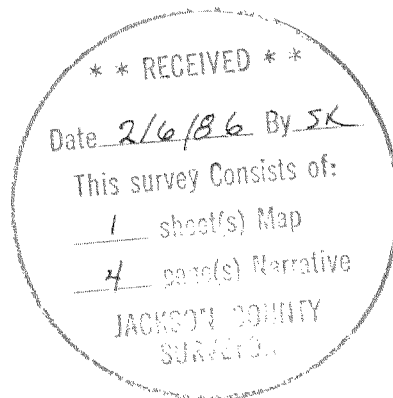
From which:

- A 6 inch dia. Madrona bears N 38° 00' W 7.2 feet marked C1/4S10 in upper face,
BT in lower face.
- A 5½ inch dia. Fir bears N 18° 16' E 18.3 feet marked C1/4S10 in upper face,
BT in lower face.

Property corner on the North-South center line of said Section 10, S 0° 07' 28" E
625.00 feet from the Center 1/4 corner. At the corner location I set a 5/8 by 30 inch
rebar with a 1½ inch dia. Alum. cap, marked LS 1086.

From which:

- An 8 inch dia. Madrona bears N 29° 02' W 19.5 feet with a brass washer marked
LS 1086 nailed to a face at the base of tree.
- A 14 inch dia. Oak bears S 10° 05' E 35.5 feet with a brass washer marked
LS 1086 nailed to a face at the base of tree.



Arthur R. Ramso

