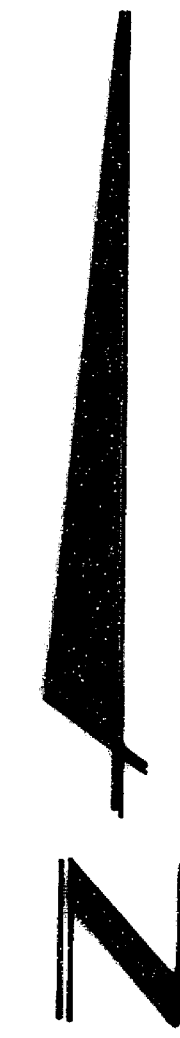
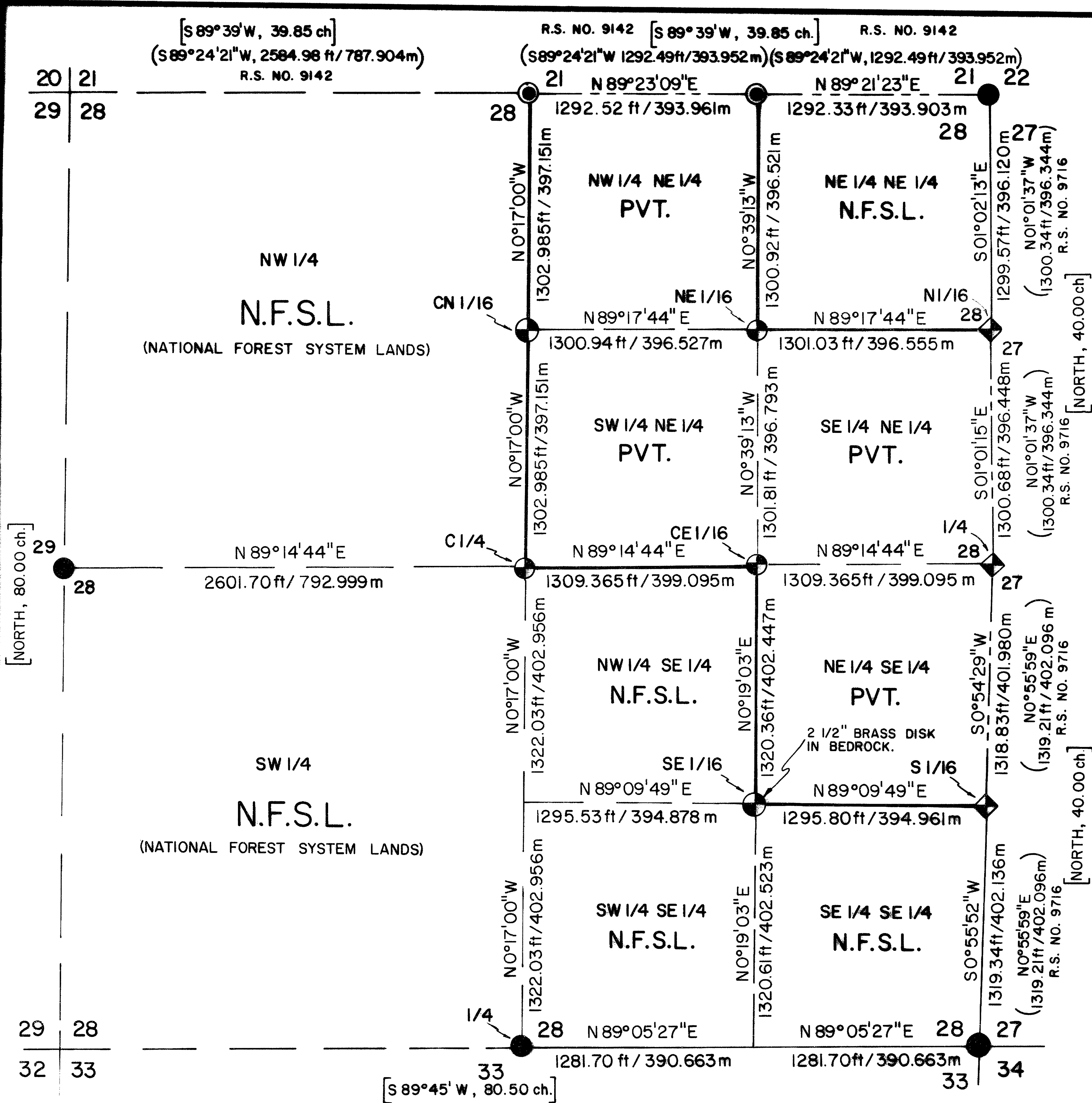
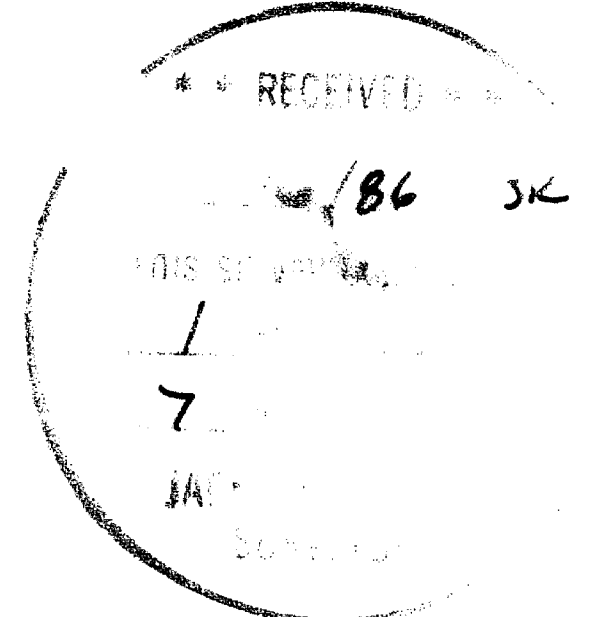
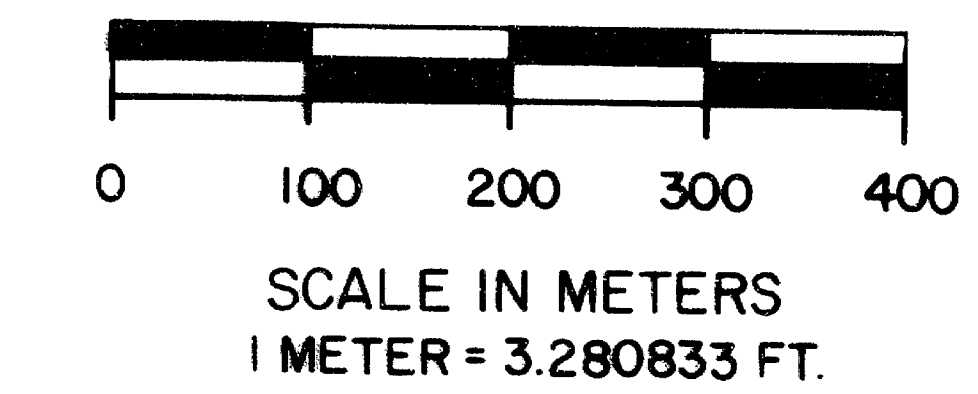
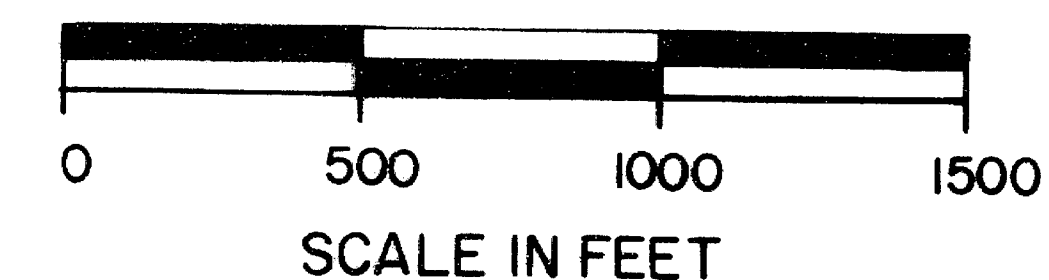


MAP OF SURVEY
FOR
ROGUE RIVER NATIONAL FOREST
P.O. BOX 520
MEDFORD, OREGON 97501
NOVEMBER 25, 1985

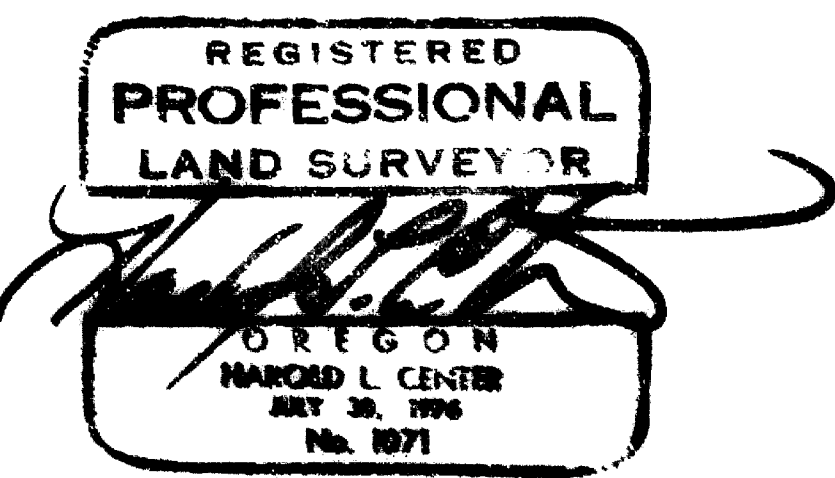


BASIS OF BEARING:
SOLAR OBSERVATION



CERTIFICATE OF SURVEY

I, HAROLD L. CENTER, REGISTRATION NO. 1071 REGISTERED PROFESSIONAL LAND SURVEYOR, STATE OF OREGON, HEREBY CERTIFY THAT THIS PLAT CORRECTLY REPRESENTS A SURVEY MADE BY ME OR UNDER MY DIRECTION IN CONFORMANCE WITH THE LAWS OF THE STATE OF OREGON, AT THE REQUEST OF THE U.S. FOREST SERVICE.



HISTORY OF SURVEYS

THE ORIGINAL CORNERS FOR SECTION 28 WERE ESTABLISHED BY RUFUS S. MOORE UNDER CONTRACT NO. 475 DATED JULY 3, 1883. THE NORTHEAST AND SOUTHWEST SECTION CORNERS AND THE WEST AND SOUTH ONE-QUARTER CORNERS WERE REMONUMENTED BY THE JACKSON COUNTY SURVEYOR IN 1973. THE NORTH ONE-QUARTER AND EAST ONE-SIXTEENTH CORNERS TO SECTIONS 21 AND 28 WERE ESTABLISHED BY MALCOLM N. CLARK, R.P.L.S. 601, UNDER RECORD SURVEY NO. 9142 DATED NOVEMBER, 1981. THE NORTH ONE-SIXTEENTH AND SOUTH ONE-SIXTEENTH CORNERS TO SECTIONS 28 AND 27 WERE ESTABLISHED BY JERRY R. SWANSON, R.P.L.S. 760, UNDER RECORD SURVEY NO. 9716 DATED JUNE-AUGUST 1983. THE ONE-QUARTER CORNER FOR SECTIONS 28 AND 27 WAS REMONUMENTED FROM ORIGINAL EVIDENCE BY JERRY R. SWANSON UNDER RECORD SURVEY NO. 9716. NO OTHER SURVEYS ARE OF RECORD.

LEGEND

- FOUND STANDARD JACKSON COUNTY SURVEYOR BRASS CAP MONUMENT W/ACCESSORIES
- FOUND 2 1/2" BRASS CAP MONUMENT SET BY RPLS 601 (REF. RECORD SURVEY NO. 9142)
- ◆ FOUND 2 1/2" BRASS CAP MONUMENT SET BY RPLS 760 (REF. RECORD SURVEY NO. 9716)
- ⊕ SET 2 1/2" X 30" LG. IRON PIPE W/ 2 1/2" BRASS CAP UNLESS OTHERWISE NOTED
- () DENOTES RECORD SURVEY
- [] DENOTES GOV'T RECORD NO. 475 R. MOORE 1883
- PROPERTY LINE MARKED AND POSTED THIS SURVEY
- SECTION AND SUBDIVISION LINE CALCULATED FROM TRAVERSE SURVEY
- - - LINE POSTED AND BLAZED PREVIOUS SURVEYS

U.S. DEPARTMENT OF AGRICULTURE
FOREST SERVICE
 REGION 6 ROGUE RIVER NATIONAL FOREST

DEPENDENT RESURVEY
AND
SECTION SUBDIVISION
SECTION 28, T.40S., R.1W., W.M
JACKSON CO., OREGON

REVIEWED BY *David L. Essing* DATE *1/14/86*
 PROJECT 84-38

10452

Survey No. _____

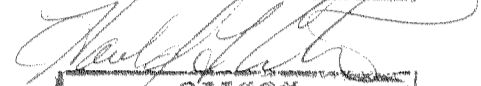
Page 7 of 7

A 10-inch diameter red fir bears S.77°26'W., 13.40 feet distance,
scribed C1/4 S28LS1071 BT.

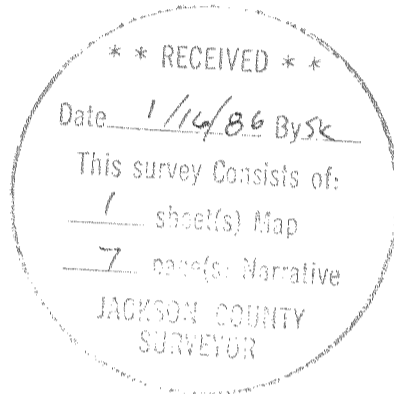
November 25, 1985

HAROLD L. CENTER
Registered Professional Land Surveyor
Oregon Certificate No. 1071

REGISTERED
PROFESSIONAL
LAND SURVEYOR



OREGON
JULY 20, 1976
HAROLD L. CENTER
No. 1071



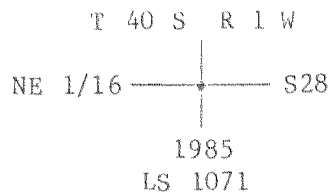
And marked the following references:

A 28-inch diameter Douglas-fir bears S.49°59'W., 44.40 feet distance, scribed CE 1/16S28 LS1071 BT.

A 22-inch diameter white fir bears S.3°48'W., 68.31 feet distance, scribed X BT.

Northeast one-sixteenth corner to Section 28, Township 40 South, Range 1 West.

At the corner point I set a 2½ inch diameter by 30 inch long iron pipe, 24 inches in the ground, with a 2½ inch diameter brass cap marked:



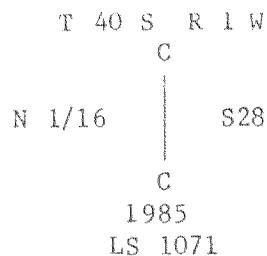
And marked the following references:

A 26-inch diameter red fir bears S.3°29'W., 35.40 feet distance, scribed NE 1/16 S28 LS1071 BT.

A 10-inch diameter white fir bears S.43°56'W., 13.75 feet distance, scribed X BT.

Center-north one-sixteenth corner to Section 28, Township 40 South, Range 1 West.

At the corner point I set a 2½ inch diameter by 30 inch long iron pipe, 27 inches in the ground, with a 2½ inch diameter brass cap marked:



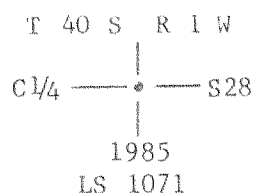
And marked the following references:

A 9-inch diameter red fir bears S.56°00'W., 64.26 feet distance, scribed X BT.

A 19-inch diameter cedar bears N.31°19'W., 20.20 feet distance, scribed CN1/16S28LS 1071 BT.

The center one-quarter corner to Section 28, Township 40 South, Range 1 West.

At the corner point I set a 2½ inch diameter by 30 inch long iron pipe, 22 inches in the ground, with a 2½ inch diameter brass cap attached, marked:



And marked the following references:

A 26-inch diameter cedar bears N.7°35'E., 11.95 feet distance, scribed C1/4S28 LS1071 BT.

A 9-inch diameter fir bears N.35°33'W., 24.20 feet distance, with scribing S1/16S28BT visible, and a 3/4-inch washer stamped LS 760 attached. (LS 760 record: N.35°W., 23.70 ft.)

Section corner to Sections 27, 28, 33 and 34, Township 40 South, Range 1 West.

At the corner point I found a standard Jackson County 2 1/2 inch brass cap monument marked:

```

T 40 S R 1 W
  |
  | S28 | S27
  |-----|
  | S33 | S34
  |
  | C.S.
  | 1973
  
```

And the following references:

A 14-inch diameter fir bears N.46°25'E., 33.30 feet distance, with a healed blaze. (Original record: N.47°E., 34.98 ft.)

A 4'x4'x2' boulder with an X chiseled on top bears S.46°23'E., 16.10 feet. (County record: S.44 1/2°W., 16.15 ft.)

A 23-inch diameter fir bears S.49°19'W., 4.60 feet distance, with a healed blaze. (Original record: S.50°W., 3.63 ft.)

A 13-inch diameter fir bears N.41°41'W., 4.20 feet distance, with a healed blaze. (Original record: N.38°W., 3.96 ft.)

Corners Established This Survey

Southeast one-sixteenth corner to Section 28, Township 40 South, Range 1 West.

At the corner point I set a 2 1/2 inch diameter brass disk, cemented flush in a northeast - facing rock cliff, marked:

```

T40S R1W
  |
  | SE 1/16 ——— S28
  |
  | 1985
  | LS 1071
  
```

And marked the following references:

A rock of undetermined (large) size bears N.10°11'W., 18.50 feet distance, marked with chisel, Bx0.

A 16-inch diameter pine bears S.7°39'E., 29.20 feet distance, scribed SE1/16 S28 LS 1071 BT.

Center-east one-sixteenth corner to Section 28, Township 40 South, Range 1 West.

At the corner point I set a 2 1/2 inch diameter by 30 inch long iron pipe, 28 inches in the ground, with a 2 1/2 inch diameter brass cap marked:

```

T 40 S R 1W
  |
  | C
  | |
  | | SE 1/16 ——— S 28
  | |
  | | C
  | | 1985
  | | LS 1071
  |
  
```

North one-sixteenth corner to Sections 28 and 27, Township 40 South, Range 1 West.

At the corner point I found a 2 1/2 inch brass cap monument marked:

N 1/16
 S28 • S27
 1983
 PLS 760

And the following references:

A 10-inch diameter fir bears N.35°22'W., 21.80 feet distance, with scribing N1/16S28 BT visible, and a 3/4-inch washer stamped LS 760 attached. (LS 760 record: N.31-3/4°W., 20.90 ft.)

A 9-inch diameter fir bears S.57°59'E., 2.80 feet distance, with scribing N1/16S27BT visible, and a 3/4-inch washer stamped LS 760 attached. (LS 760 record: N.86°E., 2.5 ft.)

One-quarter corner to Sections 27 and 28, Township 40 South, Range 1 West.

At the corner point I found a 2 1/2 inch brass cap monument marked:

T 40 S R 1W
 1/4
 S28 • S27
 1983
 PLS 760

And the following references:

A 38-inch diameter sawed fir stump, hollowed and rotten, bears S.62°55'E., 19.00 feet distance, with no scribing visible on a decayed face. (LS 760 record: N.63°W., 17.82 ft.)

A 17-inch diameter fir bears S.48°05'E., 27.90 feet distance, with scribing 1/4S27 BT visible, and a 3/4-inch washer stamped LS 760 attached. (LS 760 record: S.47 1/2°E., 27.80 ft.)

A 9-inch diameter cedar bears S.59°00'W., 32.60 feet distance, with scribing 1/4S 28 BT visible, and a 3/4-inch washer stamped LS 760 attached. (LS 760 record: S.57°W., 33.00 ft.)

South one-sixteenth corner to Sections 27 and 28, Township 40 South, Range 1 West.

At the corner point I found a 2 1/2 inch brass cap monument marked:

S 1/16
 S28 • S27
 1983
 PLS 760

And the following references:

An 11-inch diameter fir bears N.7°20'E., 8.50 feet distance, with scribing S1/16S27BT visible, and a 3/4-inch washer stamped LS 760 attached. (LS 760 record: N.81 1/2°E., 8.60 ft.)

And the following references:

A 12-inch diameter pine bears N.29°48'W., 27.80 feet distance, scribing T40SR1W 1/4S21 BT visible, with washer stamped LS 601 attached. (LS 601 record: N.29°40'W., 27.6 ft.)

A 13-inch diameter Douglas-fir bears S.57°11'W., 5.00 feet distance, with scribing T40SR1W 1/4S28 BT visible, and 3/4 inch washer stamped LS 601 attached. (LS 601 record: S59°00'W., 5.1 ft.)

The east one-sixteenth corner to Sections 21 and 28, Township 40 South, Range 1 West.

At the corner point I found a 2 1/2 inch brass cap monument marked:

T40S	R1W
E 1/16	— $\frac{S21}{S28}$ —
	1981
	RPLS 601

And the following references:

An 11-inch diameter white fir bears N.19°36'E., 20.10 feet distance, with scribing T40SR1W E1/16S21 BT visible and a 3/4-inch washer stamped LS 601 attached. (LS 601 record: N.19°35'E., 20.0 ft.)

An 11-inch diameter white fir bears S.60°06'E., 16.50 feet distance, with scribing T40SR1W E1/16S28 BT visible and a 3/4-inch washer stamped LS 601 attached. (LS 601 record: S.59°45'E., 16.45 ft.)

Section corner to Sections 21, 22, 27 and 28, Township 40 South, Range 1 West.

At the corner point I found a 2 1/2 inch Jackson County Surveyor brass cap monument marked:

T40S	R1W
S21	S22
S28	S27
	C. S.
	1973

And the following references:

A 10-inch diameter fir bears S.77°22'W., 27.80 feet distance with a healed blaze. (County record: S.78 1/2°W., 27.80 ft.)

A 19-inch diameter cedar bears N.41°43'W., 54.00 feet distance, with scribing 40SR1W BT visible. This tree now dead and down. (Original record: N.43°W., 57.42 ft.)

A 7-inch diameter fir bears N.35°48'W., 18.60 feet distance, with a double healed blaze. (County record: N.34°W., 18.50 ft.)

A 27-inch diameter fir snag, 25 feet high, bears N.16°30'E., 20.90 feet distance, with scribing 40S R1W visible. (Original record: N.18°E., 20.46 ft.)

A 7-inch diameter fir bears N.48°23'E., 17.30 feet distance, with a double healed blaze. (County record: N.50°E., 17.10 ft.)

A 12-inch diameter fir bears S.32°51'E., 31.40 feet distance, with a double healed blaze. (County record: S.31°E., 31.30 ft.)

This survey was performed using a Wild T-2 Theodolite and a Sokkisha Red 2-L Distance Meter. Basis of bearing was solar observations taken near the south one-quarter corner of Section 28. Three other solar observations were taken at random locations to verify angular accuracy.

Corners Accepted For Control

One-quarter corner to Sections 28 and 33, Township 40 South, Range 1 West.

At the corner point I found a standard 2 1/2 inch Jackson County Surveyor brass cap monument marked:

T 40 S R1W
 1/4S — $\frac{28}{33}$ —
 C.S.
 1973

And the following references:

A 19-inch diameter white pine bears S.65°34'W., 8.60 feet distance, with a healed blaze. (Original record: S.68°W., 12 lks.)

A 16-inch diameter white pine bears N.77°46'W., 9.90 feet distance, with scribing 1/4 BT visible on an open blaze. (Original record: N.74°W., 14 lks.)

A 14-inch diameter white pine bears N.17°31'W., 56.21 feet distance, with scribing CS BT visible. (County record: N.16 1/2°W., 56.25 feet)

One-quarter corner common to Sections 29 and 28, Township 40 South, Range 1 West.

At the corner point I found a standard 2 1/2 inch Jackson County Surveyor brass cap monument marked:

T40S R1W
 1/4
 S29 | S28
 C.S.
 1973

And the following references:

A 28-inch diameter by 20 feet high pine snag bears S.14°46'W., 60.06 feet distance, with scribing 1/4S BT visible. (Original record: S.13°W., 90 lks.)

A 15-inch diameter pine bears S.37°24'W., 34.48 feet distance, with scribing CS BT visible. (County record: S.37°W., 34.2 feet)

A 37-inch diameter Douglas-fir bears N.86°07'E., 8.40 feet distance, with illegible bark scribe. (Original record: East, 12 lks.)

County record: A lead plug with tack bears S.66-3/4°E., 4.82 feet.

One-quarter corner to Sections 21 and 28, Township 40 South, Range 1 West.

At the corner point I found a 2 1/2 inch brass cap monument marked:

T 40 S R1W
 1/4 — $\frac{S21}{S28}$ —
 1981
 RPLS 601

SURVEY NARRATIVE TO COMPLY WITH
PARAGRAPH 209.250 OREGON REVISED STATUTES

SURVEY FOR: Rogue River National Forest
P. O. Box 520
Medford, OR 97501

LOCATION: Section 28, Township 40 South, Range 1 West,
Willamette Meridian, Jackson County, Oregon.

PURPOSE: To monument corners and mark and post the bound-
aries between the National Forest and private
lands within Section 28.

PROCEDURE: Prior to commencement of this survey, I performed
an investigation of controlling section, quarter
section, and one-sixteenth section corner points.
The southeast and northeast section corners and the
south and west one-quarter corners of Section 28
were remonumented from original evidence by the
Jackson County Surveyor in 1973. The one-quarter
corner and east one-sixteenth corner common to
Sections 28 and 21 were established by propor-
tionate measurement by Malcolm N. Clark (R.P.L.S.
#601) during Record Survey No. 9142, dated November
1981. The one-quarter corner common to Sections 28
and 27 was remonumented from original evidence, and
the north and south one-sixteenth corners common to
Sections 27 and 28 were established by propor-
tionate measurement by Jerry R. Swanson (P.L.S.
#760) during Record Survey No. 9716 dated August
1983. No other surveys of record are noted.

With the required corner control identified, I
began the survey at the south one-quarter corner
(solar point #1) and performed a closed traverse
around the perimeter of Section 28, tying each of
the recovered monuments needed to control this sur-
vey. A search was made for original evidence at
the north one-quarter corner of Section 28. Blazes
dating to 1955 were found, but unable to locate any
original evidence, I accepted the proportioned
position of corners established by R.P.L.S. #601.

With all of the exterior controlling corners found,
the section subdivision was calculated in accor-
dance with procedures outlined in the B.L.M. Manual
of Surveying Instructions, 1973.

Closed random traverses were run in the approximate
locations of lines to be marked. Offsets from the
random lines were made to the true positions of the
property lines, which were blazed, painted red, and
posted with 6 foot aluminum posts with National
Forest boundary signs attached. All bearing trees
have a B.T. tag and attention signs attached.
Bearing Trees are scribed in accordance with the
B.L.M. Manual. In addition, most (except X BT's)
are scribed LS 1071. All monuments set are 2 1/2 inch
by 30 inch iron pipes with 2 1/2 inch brass cap
attached, except the southeast one-sixteenth
corner, which is a 2 1/2 inch brass disk set flush in
northeast - facing bedrock.