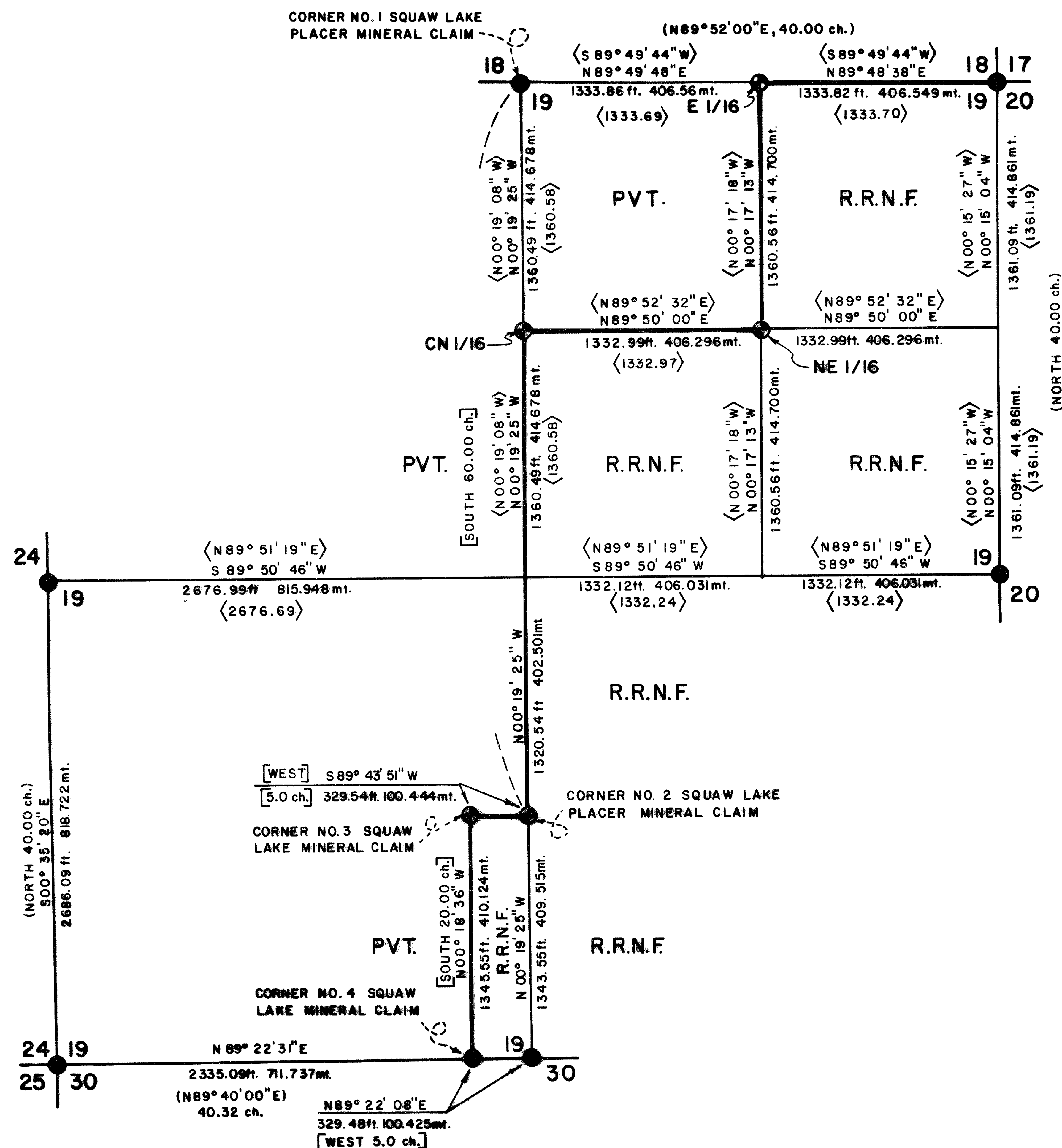
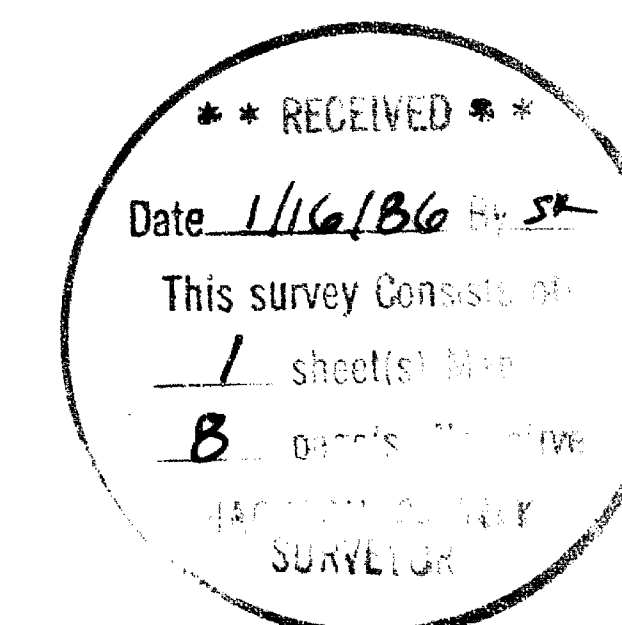
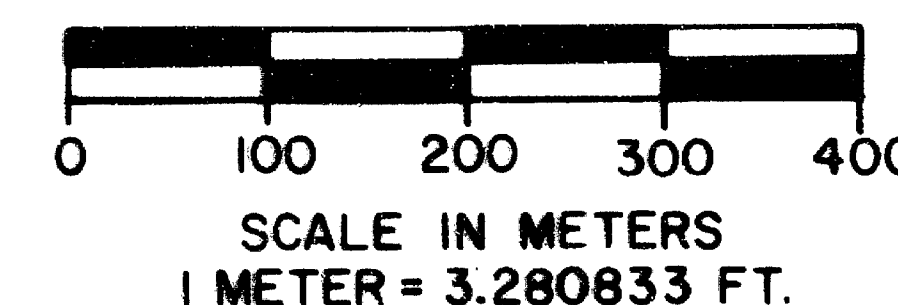
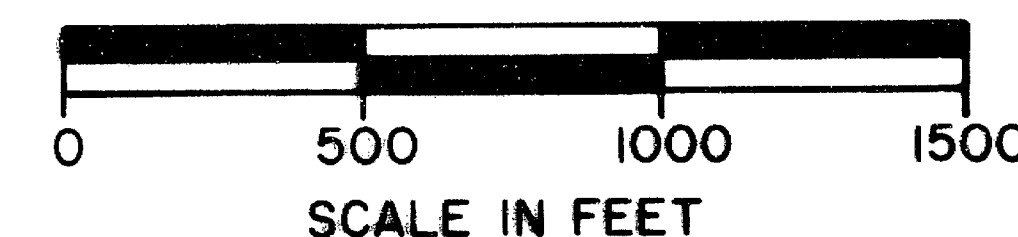


MAP OF SURVEY
FOR
ROGUE RIVER NATIONAL FOREST
P.O. BOX 520
MEDFORD, OREGON
NOVEMBER 19, 1985



BASIS OF BEARING - SOLAR OBSERVATION
HISTORY OF SURVEYS - CONTINUED IN NARRATIVE

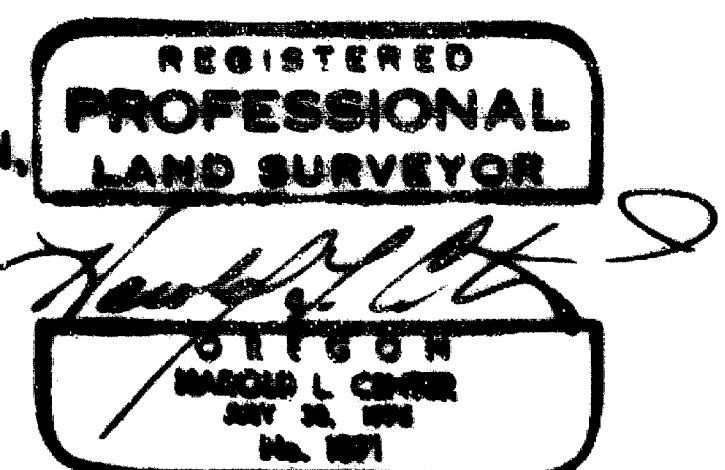


LEGEND

- FOUND STANDARD B.L.M. BRASS CAP MONUMENT
- ⊙ SET 2 1/2" DIA. X 30" LG. IRON POST WITH 2 1/2" DIA. BRASS CAP
- PROPERTY LINE MARKED AND POSTED
- () GOVERNMENT RECORD - LACKLAND 1882
- [] MINERAL SURVEY RECORD - HOWARD 1887
- < > R.S. 8099 RECORD - E.A. MCGINTY, P.L.S. 301, 1979

CERTIFICATE OF SURVEY

I, HAROLD L. CENTER, REGISTRATION NO. 1071 REGISTERED PROFESSIONAL LAND SURVEYOR, STATE OF OREGON, HEREBY CERTIFY THAT THIS PLAT CORRECTLY REPRESENTS A SURVEY MADE BY ME OR UNDER MY DIRECTION IN CONFORMANCE WITH THE LAWS OF THE STATE OF OREGON, AT THE REQUEST OF THE U.S. FOREST SERVICE.



U.S. DEPT. OF AGRICULTURE
FOREST SERVICE
REGION 6 ROGUE RIVER NATIONAL FOREST

DEPENDENT RESURVEY
AND
SECTION SUBDIVISION
SECTION 19, T. 40 S., R. 3W., W.M.
JACKSON COUNTY, OREGON

REVIEWED BY: Stephan G. Burt DATE: 2 Dec 85
REVIEWED BY: David L. Lewis DATE: 1/14/86
PROJECT 84-26

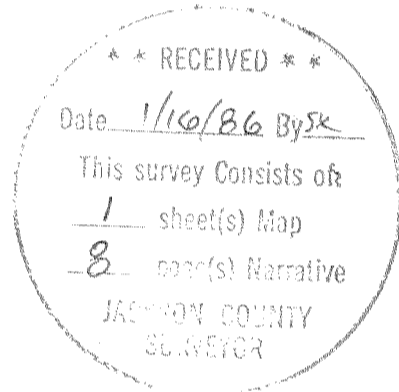
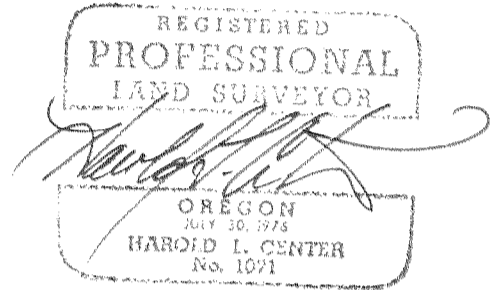
And the following references:

A 15-inch diameter oak bears $S85^{\circ}32'E.$, 35.50 feet distance, and scribed SLP-3-154 LS1071-BT.

A 19-inch diameter fir bears $S34^{\circ}08'E.$, 27.05 feet distance, and scribed SLP-3-154 LS1071 BT.

November 19, 1985

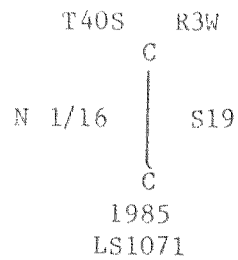
HAROLD L. CENTER
Registered Professional Land Surveyor
Oregon Certificate No. 1071



A 14-inch diameter fir bears S45°01'W., 5.00 feet distance, and scribed NE 1/16 S19 LS1071-BT.

Center-North one-sixteenth corner Section 19, Township 40 South, Range 3 West.

At the corner point I found a 3/4 inch diameter iron pin established by Edward A. McGinity, Registered Professional Land Surveyor No. 301, reference Record Survey No. 8099. Directly over the top of said iron pin I set a 2 1/2 inch diameter iron post with a 2 1/2 inch diameter brass cap marked:



And the following references:

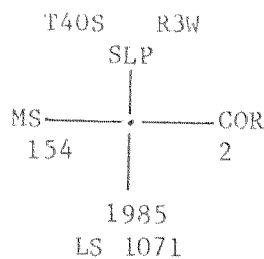
A 10-inch diameter oak bears S58°46'E., 20.40 feet distance, and scribed CN 1/16 S19 LS1071-BT.

A 6-inch diameter fir bears S15°52'E., 55.30 feet distance, and scribed X-BT.

Corners Established This Survey

Corner No. 2, Mineral Survey No. 154, Squaw Lake Placer Claim, Township 40 South, Range 3 West.

At the corner point I set a 2 1/2 inch diameter iron post with a 2 1/2 inch diameter brass cap marked:



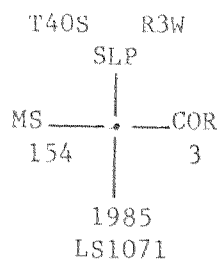
And the following references:

An 8-inch diameter pine bears N51°14'E., 15.20 feet distance, and scribed X-BT.

A 10-inch diameter fir bears S72°05'W., 5.40 feet distance, and scribed SLP-2-154LS1071-BT.

Corner No. 3, Mineral Survey No. 154 Squaw Lake Placer Claim, Township 40 South, Range 3 West.

At the corner point I set a 2 1/2 inch diameter iron post with a 2 1/2 inch diameter brass cap marked:



Corner No. 5, Mineral Survey No. 154, Squaw Lake Placer Claim, Township 40 South, Range 3 West.

At the corner point I found a standard Jackson County Surveyor brass cap monument marked:

Jackson County
SLP-5

MS 154
 1979
 T40S R3W

And the following references:

The remains of an oak stump bears $S70^{\circ}29'W.$, 31.30 feet distance, with reverse scribe marks B-T visible.

A 13-inch diameter fir bears $S74^{\circ}04'W.$, 22.20 feet distance.

An 11-inch diameter pine bears $N24^{\circ}31'E.$, 7.10 feet distance, with scribe marks CS-BT visible.

East one-sixteenth corner to Sections 18 and 19, Township 40 South, Range 3 West.

At the corner point I found a 3/4 inch diameter iron pin established by Edward A. McGinity, Registered Professional Land Surveyor No. 301, reference Record Survey No. 8099. Directly over the top of said iron pin I set a 2 1/2 inch diameter iron post with a 2 1/2 inch diameter brass cap marked:

T40S R3W
 S18
 E 1/16 ———→
 S19
 1985
 LS1071

And the following references:

A 17-inch diameter fir bears $S47^{\circ}32'E.$, 93.10 feet distance, and scribed E 1/16 S19 LS1071-BT.

An 18-inch diameter oak bears $N40^{\circ}26'E.$, 47.20 feet distance, and scribed E 1/16 S18 LS1071-BT.

Northeast one-sixteenth corner Section 19, Township 40 South, Range 3 West.

At the corner point I found a 3/4 inch diameter iron pin established by Edward A. McGinity, Registered Professional Land Surveyor No. 301, reference Record Survey No. 8099. Directly over the top of said iron pin I set a 2 1/2 inch diameter iron post with a 2 1/2 inch diameter brass cap marked:

T40S R3W
 NE 1/16 ———|—— S19
 |
 1985
 LS 1071

And the following references:

An 18-inch diameter fir bears $S70^{\circ}20'E.$, 13.98 feet distance, and scribed NE 1/16 S19 LS1071-BT.

U.S. Dept. of Interior
Unlawful to Disturb
T40S R3W

$\frac{1}{4}$ $\frac{S19}{S30}$

1981
1977

Bureau of Land Management
Cadastral Surveys

And the following references:

A 7-inch diameter oak bears N50°32'E., 35.60 feet distance, with scribe visible.

An 11-inch diameter fir bears S43°08'E., 28.77 feet distance.

One-quarter section corner to Section 19, Township 40 South, Range 3 West, and Section 24, Township 40 South, Range 4 West.

At the corner point I found a standard Bureau of Land Management brass cap monument marked:

U.S. Dept. of Interior
Unlawful to Disturb

$\frac{1}{4}$

S24 | S19
R4W | R3W

T40S
1964

Cadastral Surveys
Bureau of Land Management

And the following references:

A 22-inch diameter oak bears S04°50'E., 35.36 feet distance.

A 17-inch diameter oak bears S30°54'W., 31.10 feet distance.

A 15-inch diameter fir bears N64°07'W., 24.51 feet distance. This tree now dead.

An 11-inch diameter pine bears N79°58'E., 29.99 feet distance.

Corner No. 4, Mineral Survey No. 154 Squaw Lake Placer Claim, Township 40 South, Range 3 West.

At the corner point I found a standard Bureau of Land Management brass cap monument marked:

U.S. Dept. of Interior
Unlawful to Disturb
S19

SLP-4-154

S30
1981
1977

Cadastral Surveys
Bureau of Land Management

And the following references:

A 10-inch diameter fir bears S16°21'W., 26.70 feet distance.

U.S. Dept. of Interior
 Unlawful to Disturb
 T40S R3W
 1/4
 S19 | S20
 1964
 Bureau of Land Management
 Cadastral Surveys

And the following references:

- A 9-inch diameter oak bears N59°19'E., 31.44 feet distance, with scribe visible.
- A 15-inch diameter oak bears N70°12'E., 16.47 feet distance.
- A 10-inch diameter oak bears S09°42'W., 55.77 feet distance.
- A 12-inch diameter oak stump bears S87°13'W., 31.27 feet distance. Face is badly burnt, no marks visible.

The one-quarter corner to Sections 19, Township 40 South, Range 3 West, and Section 24, Township 40 South, Range 4 West.

At the corner point I found a standard Bureau of Land Management brass cap monument marked:

U.S. Dept. of Interior
 Unlawful to Disturb
 T40S
 R4W R3W
 S24 | S19
 S25 | S30
 1964
 Bureau of Land Management
 Cadastral Surveys

And the following references:

- A 10-inch diameter oak bears S32°12'W., 47.60 feet distance.
- A 15-inch diameter oak bears N30°18'W., 55.10 feet distance.
- A 9-inch diameter fir bears N05°56'W., 46.70 feet distance.
- A 13-inch diameter fir bears N21°00'E., 15.20 feet distance.
- A 25-inch diameter pine bears N38°09'E., 52.70 feet distance.
- A 17-inch diameter oak bears S79°13'E., 72.47 feet distance.
- A 25-inch diameter oak bears S37°01'E., 55.70 feet distance.

The one-quarter corner to Sections 19 and 30, Township 40 South, Range 3 West.

At the corner point I found a standard Bureau of Land Management brass cap monument marked:

Corners Accepted For Control

One-quarter corner to Sections 18 and 19, Township 40 South, Range 3 West. This corner is also equal to corner no. 1, M.S. No. 154, Squaw Lake Placer Claim.

At the corner point I found a standard Bureau of Land Management brass cap monument marked:

U.S. Dept. of Interior
Unlawful to Disturb
T40S R3W

$\frac{1}{4}$ $\frac{18}{19}$

1964
Bureau of Land Management
Cadastral Surveys

And the following references:

- A 15-inch diameter fir bears S30°54'W., 11.70 feet distance.
- A 28-inch diameter oak bears S40°32'W., 87.50 feet distance.
- A 16-inch diameter fir bears N41°05'E., 10.60 feet distance.
- A 10-inch diameter oak bears N49°02'E., 49.20 feet distance.

Section corner to Sections 17, 18, 19 and 20, Township 40 South, Range 3 West.

At the corner point I found a standard Bureau of Land Management brass cap monument marked:

U.S. Dept. of Interior
Unlawful to Disturb
T40S R3W

S18	S17
S19	S20

1964
Bureau of Land Management
Cadastral Surveys

And the following references:

- A 25-inch diameter fir bears N75°08'W., 40.51 feet distance.
- A 29-inch diameter fir bears N56°38'E., 20.48 feet distance.
- A 16-inch diameter fir bears N87°09'E., 55.48 feet distance.
- A 23-inch diameter fir bears S49°05'E., 22.73 feet distance.
- A 12-inch diameter oak bears S37°06'E., 20.13 feet distance, with scribe fragments visible.
- A 12-inch diameter fir bears S17°28'W., 25.99 feet distance.

The one-quarter corner of Sections 19 and 20, Township 40 South, Range 3 West.

At the corner point I found a standard Bureau of Land Management brass cap monument marked:

Surveyor McGinity had subdivided Section 19 and established iron pins to monument the east one-sixteenth corner to Sections 18 and 19, and the northeast and center north one-sixteenth corners of Section 19 (reference Record Survey No. 8099). From my control survey data I computed a section subdivision of Section 19 and compared my corner points with those established by McGinity. Each corner point established by McGinity was found within positional tolerances and was accepted in positions found. Each corner point was then monumented with a 2 1/2 inch diameter brass cap monument. Iron pins established by McGinity were placed inside each monument I established. In addition, accessories to reference each corner point were established.

I then made an evaluation of the mineral survey performed by J. S. Howard. Corner no. 1 (the one-quarter corner of Sections 18 and 19) and corner no. 5 were the only original mineral survey corners which had been recovered prior to this survey. I began at corner no. 1 and established a random line traverse and temporary corner points at record positions for corners no. 2 and 3, tying my traverse to corner no. 4 (corner no. 4 had been reestablished by proportional measurement on the south line of Section 19 by the Bureau of Land Management) and corner no. 5. From this data I performed a search for evidence of corners no. 2, 3 and wooden posts established by Howard to mark the center one-quarter. After extensive search I was unable to locate any evidence of the original mineral survey corners. Search along the interior claim lines within Section 19 did recover 2 oak trees blazed and scribed with the letter's PMC on an upper blaze and the letters BT near the base of the tree. Blazes on both trees date to the age of Howard's survey, and a comparison of scribe from these trees with scribe trees at other original mineral survey corners within the claim, matched perfectly. These trees appeared to be more as blazed trees along the line rather than references to a particular corner. I performed a search of Howard's original field note books in the possession of Mark Boyden, Registered Professional Land Surveyor No. 281, and reviewed logs of notes on file with the National Archives in Seattle, Washington, with no data located pertaining to M.S. No. 154 that would assist in identifying corner points not of record. Unable to locate any evidence of the original corners, I reestablished corners no. 2 and 3 utilizing the broken boundary method of corner restoration. I utilized this method as it provided a method of proportional measurement for reestablishment of corners no. 2 and 3 and virtually eliminated conflict with the line between corners no. 1 and 2, and the west line of the northwest quarter of the northeast quarter. This method was also employed by the Bureau of Land Management in dependent resurvey of Section 30.

Property lines were marked with aluminum posts with National Forest boundary signs attached. Trees along the line were blazed and blazes were painted with red timber marking paint.

This survey was performed utilizing a Wild T-2 Theodolite and Wild DI-4 Electronic Distance Meter.

SURVEY NARRATIVE TO COMPLY WITH
PARAGRAPH 209.250 OREGON REVISED STATUTES

SURVEY FOR: Rogue River National Forest
P. O. Box 520
Medford, OR 97501

LOCATION: Section 19, Township 40 South, Range 3 West,
Willamette Meridian, Jackson County, Oregon.

PURPOSE: To establish corner points and mark and post pro-
perty lines separating National Forest and private
lands within portions of Section 19.

HISTORY OF SURVEYS: Original surveys of Section 19 were performed by
Deputy Surveyor Samuel W. Lackland under Contract
No. 429 dated January 5, 1882.

Mineral Survey No. 154, known as the Squaw Lake
Placer Mine, was surveyed by J. S. Howard, U.S.
Deputy Mineral Surveyor, on August 13, 1887.
Portions of Mineral Survey No. 154 were dependently
resurveyed by Bureau of Land Management Cadastral
Surveyors Ronald Schirler and Philip G. Griffin
between 1977 and 1981 under Group No. 943.

Edward A. McGinity, Registered Professional Land
Surveyor No. 301, performed a dependent resurvey
and section subdivision of portions of Section 19,
reference Record Survey No. 8099. Surveyor
McGinity established monuments to mark the boun-
daries of the NW $\frac{1}{4}$ of NE $\frac{1}{4}$ of Section 19.

J. A. Hoffbuhr, Registered Oregon Land Surveyor No.
222, performed several surveys within Section 19.
Reference Record Survey No. 4358. Surveyor
Hoffbuhr divided a portion of the land situated
between the County Road and the easterly line of
the mineral survey into small tracts. Surveyor
Hoffbuhr did not establish the east line of the
claim, but established witness corners westerly of
the easterly north-south line of the claim.

PROCEDURE: I began this survey with an investigation of
controlling corners for the subdivision of the sec-
tion and corner points controlling the reestablish-
ment of the easterly boundary of the mineral survey
within Section 19. The north, east and west one-
quarter corners and northeast section corner points
had been remonumented from original corner evi-
dence. Mineral Survey No. 154 corner point no. 5
had been remonumented from original evidence by the
Jackson County Surveyor. Surveyor McGinity had
reestablished the south one-quarter corner by pro-
portional measurement, reference Record Survey No.
8099.

With the above controlling corners identified, I
performed a control traverse tying all corners
along with corner points established by Surveyors
McGinity and Hoffbuhr.

This survey was complex in that a portion of the
lines and corners needed were dependent upon the
mineral survey while other lines were dependent
upon a subdivision of Section 19. It is
interesting to note that the patent issued for the
northwest quarter of the northeast quarter does not
refer to the mineral survey or claim lines or cor-
ners.