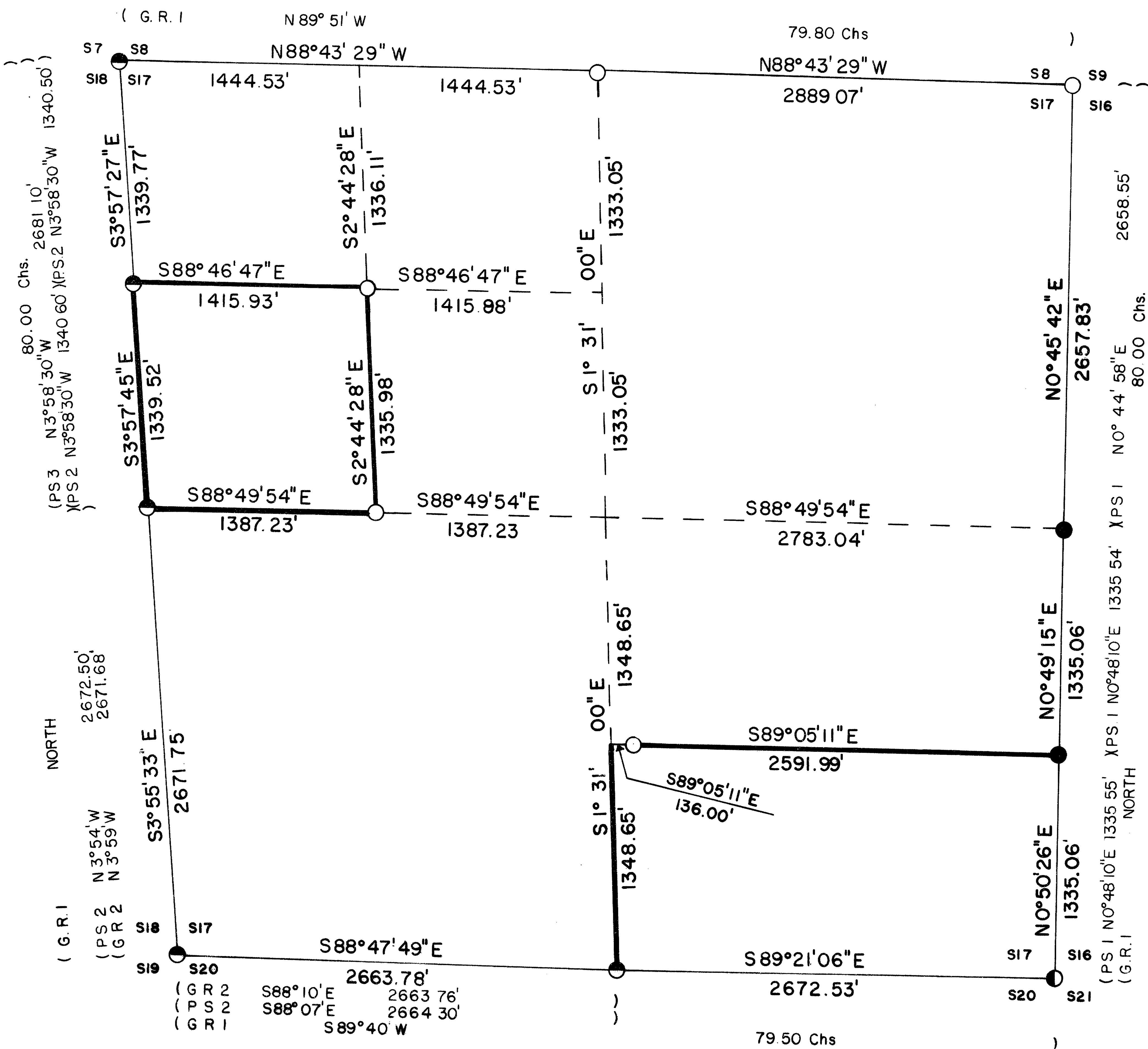
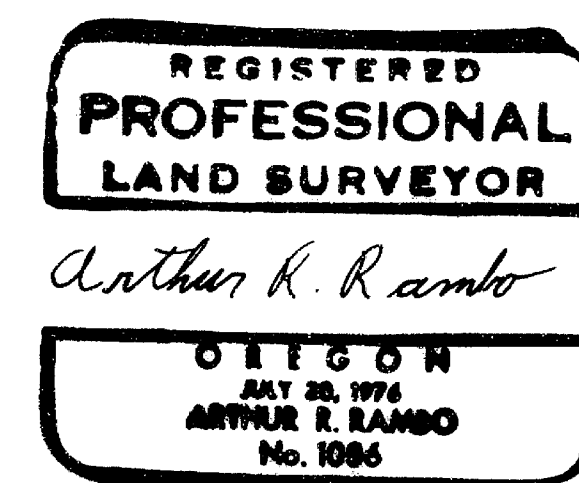


S 17 T 35 S R 3 E W. M.



CERTIFICATE OF SURVEY

I, ARTHUR R. RAMBO, REGISTRATION No. 1086 REGISTERED PROFESSIONAL LAND SURVEYOR STATE OF OREGON, HEREBY CERTIFY THAT THIS MAP CORRECTLY REPRESENTS A SURVEY MADE BY ME OR UNDER MY DIRECTION IN CONFORMANCE WITH THE LAWS OF THE STATE OF OREGON.



LEGEND

- FOUND STANDARD B.L.M. MONUMENT
 - FOUND COUNTY MONUMENT
 - FOUND MONUMENT SET SURVEY No. 6760
 - SET 5/8" BY 30" REBAR WITH 1 1/2" ALUM. CAP
- G.R. 1 1855 GOVERNMENT RECORD
 G.R. 2 1980 GOVERNMENT RECORD
 P.S. 1 PRIVATE SURVEY No. 6760
 P.S. 2 PRIVATE SURVEY No. 4512
 P.S. 3 PRIVATE SURVEY No. 4434
- LINE POSTED AND BLAZED THIS SURVEY

BASIS OF BEARING

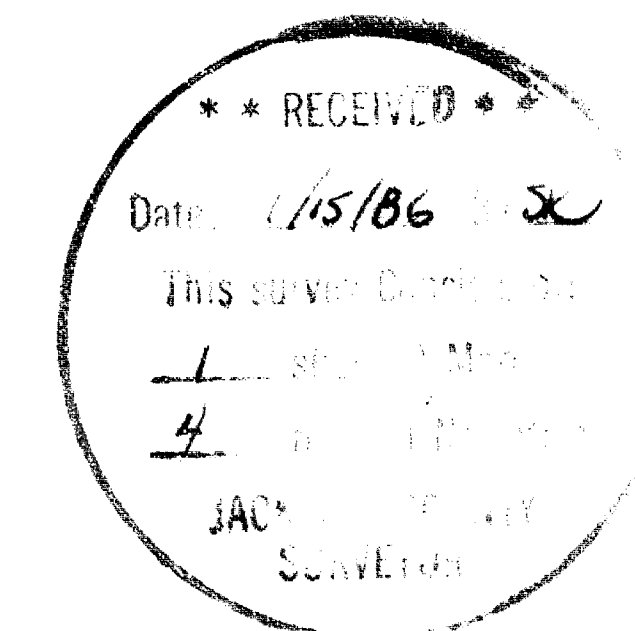
SOLAR OBSERVATION

SCALE

1" = 500'

DATE

14 JANUARY 1986



SURVEY NARRATIVE TO COMPLY WITH O.R.S. 209.250

Location: Section 17, Township 35 South, Range 3 East, Willamette Meridian, Jackson County, Oregon

Survey for: Medford Resources Corporation
P. O. Box 550
Medford, Oregon 97501

Survey by: Arthur R. Rambo PLS 1086
214 Tracy Avenue
Eagle Point, Oregon 97524

Date: January 14, 1986

Purpose: To mark and post the boundaries of Medford Resources Corporation land in the Northwest and Southeast quarters of said section.

Procedure: The original survey of Section 17 was completed by Nathaniel Ford under contract #58 dated April 18, 1855. The Northwest, Northeast, Southeast, and South one-quarter corners have been reestablished, by the Jackson County Surveyor, from original evidence. The West one-quarter corner was reestablished from original evidence by Duane Smeltzer (PLS 461) on survey #4434. The Southwest corner was reestablished by double proportionate measurement, and the North 1/16 corner common to Sections 17 and 18 was established by Duane Smeltzer (PLS 461) on survey #4512. The East one-quarter corner was reestablished from original evidence, and the South 1/16 corner common to Sections 16 and 17 was established by Arthur R. Rambo (PLS 1086) on survey #6760. No evidence of the North one-quarter corner had been found. The Bureau of Land Management, Cadastral Surveyors have remonumented the South one-quarter corner, Southwest corner, West one-quarter corner, North 1/16 corner common to Sections 17 and 18, and the Northwest corner of said Section 17.

I performed a closed traverse survey beginning at the Northeast corner, then I proceeded to the Northwest corner, then to the North 1/16 corner common to Sections 17 and 18, then to the West one-quarter corner, then to the Southwest corner, then to the South one-quarter corner, then to the Southeast corner, then to the South 1/16 corner common to Sections 16 and 17, then to the East one-quarter corner, then back to the Northeast corner closing the survey. I calculated a position for the North one-quarter corner and made another search for the corner. I could find no original evidence of the corner. I set the corner by single proportion measurement. Then I performed a closed traverse of the interior lines needed, beginning and closing on the exterior lines of the section. I set corners and posted lines as shown on the plat to accompany this narrative.

CORNERS FOUND AND ACCEPTED FOR CONTROL:

All measurements to bearing trees are to the center of tree at the base unless otherwise stated.

Section corner common to Sections 8, 9, 16, and 17, Township 35 South, Range 3 East. At the section corner I found a 2 inch dia. pipe flush with the ground.

From which:

- A 22 inch dia. Douglas Fir bears S 31° 31' E 84.4 feet unopened.
- An 18½ inch dia. Douglas Fir bears N 54° 30' W 26.9 feet scribes visible in chopped out face.
- A 20 inch dia. Douglas Fir bears S 59° 55' W 37.0 feet unopened.

Tax Lots #35-3E-02700
#35-3E-02801
#35-3E-02900

Section corner common to Sections 7, 8, 17, and 18, Township 35 South, Range 3 East. At the corner location I found a standard Bureau of Land Management monument marked:

T35S	R3E
S7	S8
S18	S17

1965

From which:

- A 51 inch dia. Cedar bears N 38° 55' E 113.0 feet bark scribed, S in upper face, BT in lower face.
- An 11 inch dia. Cedar bears N 55° 35' E 37.1 feet with partially healed face.
- A 13 inch dia. Pine bears S 45° 20' E 28.4 feet with scribes visible in a partially healed face.
- A 13½ inch dia. Fir bears S 55° 22' W 33.0 feet unopened.
- An 11 inch dia. Pine bears N 23° 47' W 10.6 feet with scribes visible in a partially healed face.

North one-sixteenth corner common to Sections 17 and 18, Township 35 South, Range 3 East. At the corner location I found a standard Bureau of Land Management monument, exposed 6 inches in a mound of stone, marked:

N 1/16	
S18	S17

1980

From which:

- A 10 inch dia. Pine bears S 2° 32' E 5.3 feet unopened.
- An 11 inch dia. Pine bears N 61° 15' W 22.6 feet with scribes visible in a partially healed face.

One-quarter corner common to Sections 17 and 18, Township 35 South, Range 3 East. At the corner location I found a standard Bureau of Land Management monument, cap exposed 3 feet above ground in large mound of stone, marked:

T35S	R3E
1/4	
S18	S17

1980

From which:

- A 15 inch dia. Fir bears N 50° 54' E 13.4 feet with scribes visible in a partially healed face.
- A 14 inch dia. Fir bears N 79° 36' W 38.3 feet with scribes visible in a partially healed face.
- A 34½ inch dia. Fir bears N 59° 09' W 39.8 feet with scribes visible in a chopped out face.

Section corner common to Sections 17, 18, 19, and 20, Township 35 South, Range 3 East. At the corner location I found a standard Bureau of Land Management monument, exposed 6 inches in a mound of stone, marked:

T35S	R3E
S18	S17
S19	S20

1980

From which:

- A 10 inch dia. Fir bears S 64° 23' W 11.5 feet unopened.
- An 8 inch dia. Fir bears N 55° 00' W 3.7 feet unopened.
- An 8 inch dia. Cedar bears N 39° 25' E 1.6 feet marked S17 RS 461 BT.
- A 6 inch. dia. Fir bears S 6° 09' E 10.6 feet unopened.

One-quarter corner common to Sections 17 and 20, Township 35 South, Range 3 East. At the corner location I found a standard Bureau of Land Management monument, exposed 15 inches in a mound of stone, marked:

T35S	R3E
1/4	S17
4	S20

1965

From which:

- A 2 1/2 inch dia. Pine bears N 68° 50' E 62.0 feet with scribes visible in chopped out face.
- A 27 inch dia. Fir bears S 29° 32' W 23.0 feet unopened.
- An 8 1/2 inch dia. Fir bears S 43° 48' W 8.0 feet unopened.
- A 9 inch dia. Fir bears N 13° 21' W 10.6 feet unopened.

Section corner common to Sections 16, 17, 20, and 21, Township 35 South, Range 3 East. At the corner location I found a Jackson County monument, 2 1/2 inch dia. brass cap exposed 6 inches, marked:

Jackson County 1		
T35S	R3E	9
17	16	7
20	21	7

From which:

- An 1 1/2 inch dia. Fir bears S 2° 38' E 2.8 feet unopened.
- A 2 1/2 inch dia. Cedar bears S 26° 37' W 29.1 feet marked 220 in chopped out face.
- A 1 1/2 inch dia. Fir bears S 50° 12' W 54.7 feet unopened.
- A 10 inch dia. Fir bears N 48° 19' W 22.8 feet unopened.
- A 1 1/2 inch dia. Fir (dead) bears N 19° 40' E 17.9 feet unopened.

South one-sixteenth corner common to Sections 16 and 17, Township 35 South, Range 3 East. At the corner location I found a 1 1/2 inch dia. Alum. cap, exposed 2 inches in North edge of Rancheria Creek, marked:

PLS 1086		
S		
S17	1	S16
16		
T35S R3E		

From which:

- A 20 inch dia. Fir bears S 52° 13' W 48.1 feet with scribes visible in a partially healed face.
- A 16 inch dia. Fir bears N 17° 21' E 44.3 feet with scribes visible in a partially healed face.

One-quarter corner common to Sections 16 and 17, Township 35 South, Range 3 East. At the corner location I found a 2 1/2 inch dia. brass cap, exposed 8 inches in a mound of stone, marked:

PLS 1086		
1		
4		
S17	+	S16
T35S R3E		

From which:

- An 11 inch dia. Fir (dead) bears S 53° 01' W 70.2 feet marked PLS 1086 BT.
- A 1 3/4 inch dia. Fir bears S 67° 26' E 22.9 feet unopened.

CORNERS SET THIS SURVEY:

All measurements to bearing trees are to the center of tree at the base unless otherwise stated. All bearing trees have a brass washer marked LS 1086 nailed to the BT face of tree.

One-quarter corner common to Sections 8 and 17, Township 35 South, Range 3 East. At the corner location I set a 5/8 by 30 inch rebar with a 1 1/2 inch dia. Alum. cap exposed 8 inches, marked:

T35S R3E		
S8		
1/4	+	
S17		
LS1086		

From which:

- An 7 inch dia. Cedar bears N 49° 38' E 7.9 feet marked 1/4S6 in upper face,
BT in lower face.
An 7 inch dia. Fir bears S 27° 11' W 23.2 feet marked 1/4S17 in upper face,
BT in lower face.

Northwest one-sixteenth corner Section 17, Township 35 South, Range 3 East. At the corner location I set a 5/8 by 30 inch rebar with a 1½ inch dia. Alum. cap, exposed 6 inches, marked:

T35S R3E
S17
NW + 1/16
LS1086

From which:

- A 7 inch dia. Fir bears S 88° 15' E 13.3 feet marked NW1/16S17 in upper face,
BT in lower face.
An 8½ inch dia. Fir bears S 51° 42' W 39.6 feet marked NW1/16S17 in upper face,
BT in lower face.

Centerwest one-sixteenth corner Section 17, Township 35 South, Range 3 East. At the corner location I set a 5/8 by 30 inch rebar with a 1½ inch dia. Alum. cap, exposed 11 inches in a mound of stone, marked:

T35S R3E
S17
CW + 1/16
LS1086

From which:

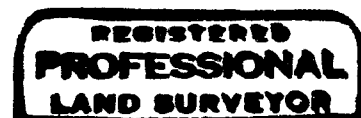
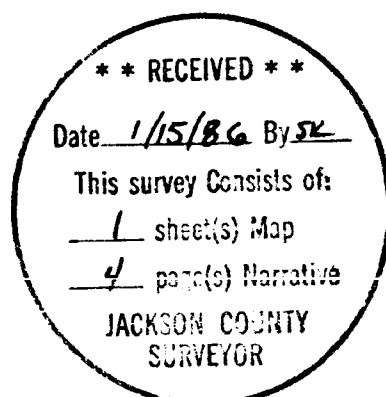
- An 8 inch dia. Fir bears N 88° 35' E 20.3 feet marked CW1/16S17 in upper face,
BT in lower face.
An 8 inch dia. Fir bears N 17° 55' W 63.4 feet marked CW1/16S17 in upper face,
BT in lower face.

Centersouth one-sixteenth corner Section 17, Township 35 South, Range 3 East. Corner location falls in Big Butte Creek. At a point S 89° 05' 11" E 136.00 feet from the corner location I set a Witness Corner 5/8 by 30 inch rebar with a 1½ inch dia. Alum. cap, exposed 6 inches in a mound of stone, marked:

T35S R3E
WC
CS ← + 1/16
S17
LS1086

From which:

- A 9 inch dia. Oak bears S 25° 03' E 12.6 feet marked WCCS1/16S17 in upper face,
BT in lower face.
A 3½ inch dia. Oak bears N 63° 00' E 19.5 feet marked WCCS1/16S17 in upper face,
BT in lower face.



Arthur R. Rando

