

10372

(GR. WEST 79.9 CH.)

SURVEY NO.

* RECEIVED *

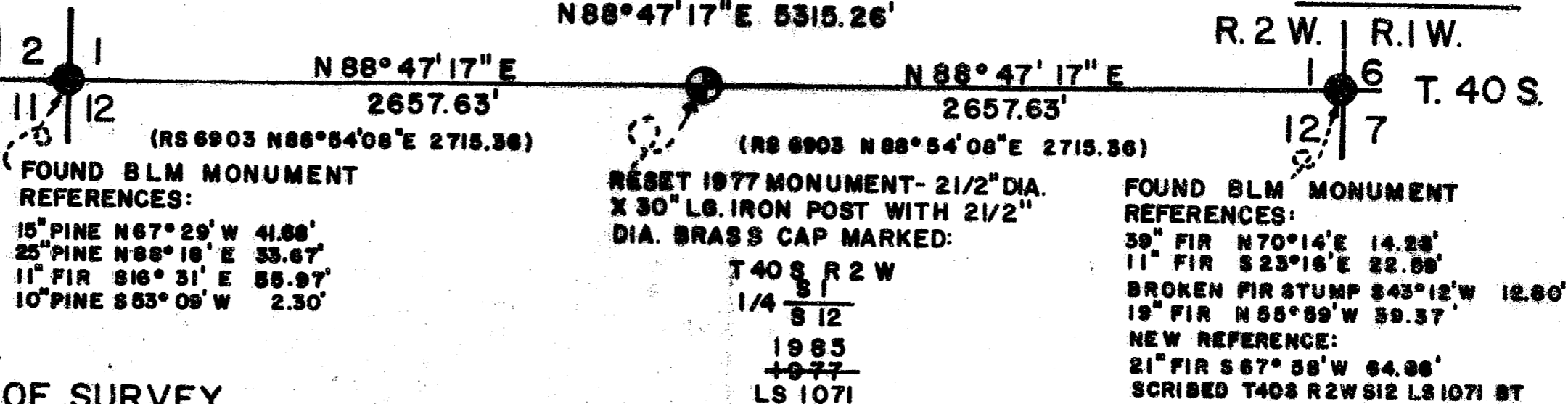
Date 10/1/85 By SK

This survey consists of

1 sheet(s) map

3 page(s) narrative

JACKSON COUNTY SURVEY



MAP OF SURVEY
FOR
ROGUE RIVER NATIONAL FOREST
LOCATION
SEC. 1 & 12, T. 40 S., R. 2 W., W.M.

LEGEND

- FOUND STANDARD BLM MONUMENTS
 - ⊕ SET 2 1/2" DIA. X 30" LG. IRON POST WITH 2 1/2" DIA. BRASS CAP.
- BASIS OF BEARING - SOLAR OBSERVATION
SCALE 1" = 600'
SEPTEMBER 11, 1985

REGISTERED
PROFESSIONAL
LAND SURVEYOR

Harold L. Center

OREGON
HAROLD L. CENTER
JULY 26, 1982
No. 1071

U.S. DEPT. OF AGRICULTURE FOREST SERVICE REGION 6 ROGUE RIVER NATIONAL FOREST	
DEPENDENT RESURVEY	
SECS. 1 & 12, T. 40 S., R. 2 W., W.M. JACKSON COUNTY, OREGON	
REVIEWED BY <i>[Signature]</i>	DATE <u>9/25/85</u>
REVIEWED BY <i>[Signature]</i>	DATE <u>9/25/85</u>

10372

SURVEY NARRATIVE TO COMPLY WITH
PARAGRAPH 209.250 OREGON REVISED STATUTES

SURVEY FOR: Rogue River National Forest
P. O. Box 520
Medford, OR 97501

LOCATION: Line common to Sections 1 and 12, Township 40
South, Range 2 West, Willamette Meridian, Jackson
County, Oregon.

BASIS OF BEARING: Solar Observation

PURPOSE: To amend Record of Survey No. 6903. A distance
error was discovered in my original survey. This
survey corrects and supersedes Record of Survey No.
6903.

PROCEDURE: I began my resurvey of this line with an investiga-
tion of the controlling corners. Both controlling
section corners had been remonumented from original
corner evidence by the Bureau of Land Management,
Division of Cadastral Surveys in 1975. With the
required controlling corners verified, I
established a control traverse tying both
controlling corners and my monument established in
1977.

I then ran a random line traverse adjacent to the
true line between corner points. I then reset my
1977 monument to the proper location and reposted
the property line.

Lines were posted utilizing metal posts with
National Forest boundary signs attached. Trees
along the line were blazed and painted with red
timber marking paint.

Surveys were performed utilizing a Wild T-2
Theodolite and a Leitz Red 2L Electronic Distance
Meter.

Corners Accepted For Control

Section corner to Sections 1 and 12, Township 40 South, Range 2 West, and
Sections 6 and 7, Township 40 South, Range 1 West.

At the corner point I found a standard Bureau of Land Management brass cap
monument marked.:

U.S. Dept. of Interior
Unlawful to Disburb
T 40 S
R2W R1W

S1 | S6
—+—
S12 | S7

1976
Cadastral Surveys
Bureau of Land Management

And the following references:

A 39-inch diameter fir bears N70°14'E., 14.26 feet, with a healed
blaze.

An 11-inch diameter fir bears S23°16'E., 22.59 feet, with a healed blaze.

A fir stump, size indeterminate, bears S43°12'E., 12.80 feet. This tree is dead and badly decayed.

A 19-inch diameter fir bears N55°59'W., 39.37 feet, with a healed blaze.

And a new reference this survey:

A 21-inch diameter fir bears S67°58'W., 64.86 feet, and scribed T40S R2W S12 LS1071 BT.

Section corner to Sections 1, 2, 11 and 12, Township 40 South, Range 2 West.

At the corner point I found a standard Bureau of Land Management brass cap monument marked:

U.S. Dept. of Interior
Unlawful to Disturb
T40S R2W

S2	S1
S11	S12

1975
Cadastral Surveys
Bureau of Land Management

And the following references:

A 15-inch diameter pine bears N67°29'W., 41.68 feet, with scribe visible.

A 25-inch diameter pine bears N88°18'E., 33.67 feet, with scribe visible.

An 11-inch diameter fir bears S16°31'E., 55.97 feet, with a healed blaze.

A 10-inch diameter pine bears S53°09'W., 2.30 feet, with scribe visible.

CORNER ESTABLISHED THIS SURVEY

One-quarter to Sections 1 and 12, Township 40 South, Range 1 West.

At the corner point I reset my previously established monument, a 2 1/2 inch diameter 30 inch long brass cap monument marked:

T40S
R2W
1/4 $\frac{S1}{S12}$
1985
~~1977~~
LS1071

And the following references:

A 6-inch diameter pine bears N56°50'W., 17.40 feet, and scribed X-BT.

An 8-inch diameter fir bears S71°18'W., 45.40 feet, and scribed 1/4 S12 LS1071 BT.

September 11, 1985

HAROLD L. CENTER
Registered Professional Land Surveyor
Oregon Certificate No. 1071

