

**MAP OF SURVEY**

Located in Sections 14 and 23, Township 32 South,  
Range 2 East of the Willamette Meridian, Jackson  
County, Oregon.

for

**The U.S. FOREST SERVICE**

REF. CONTRACT NO. 43-04N7-5-495

sheet 1 of 2 sheets

BASIS OF BEARING: Filed Survey No. 8914.

○ Found monument as shown. (SEE NARRATIVE)

● Set 2" x 30" flanged galvanized iron pipe with  
a 2 1/2" brass cap.

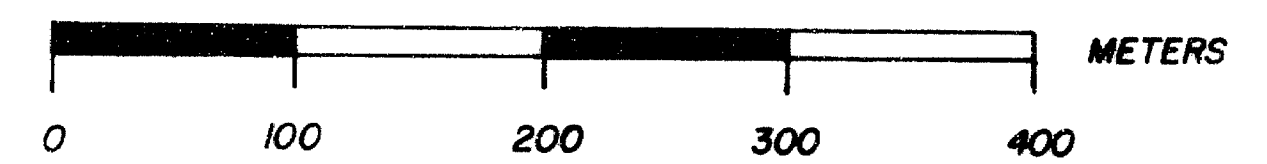
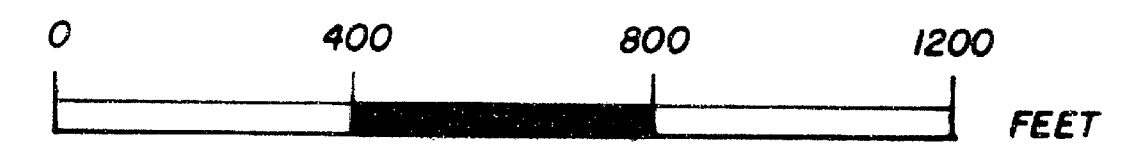
SCALE: 1 inch = 400 feet

1 meter = 3.280833333 feet

REF: Fieldbooks 1 and 2 of 2 WHETSTONE CADASTRAL  
SURVEY, CONTRACT NO. 43-04N7-5-495.

DATE: Survey began June 3, 1985

Completed July 24, 1985.



Mean magnetic declination = 18°37' East



**CONTRACT SURVEYOR'S CERTIFICATE:**

I, KURT C. WEAVER, A REGISTERED PROFESSIONAL LAND SURVEYOR IN THE STATE OF OREGON,  
HEREBY CERTIFY THAT THIS PLAT AND THE NOTES HEREON, OR ATTACHED, ARE A CORRECT  
REPRESENTATION OF A SURVEY PERFORMED BY ME OR UNDER MY DIRECTION DURING JUNE AND  
JULY OF 1985, AT THE REQUEST OF THE USDA FOREST SERVICE, IN ACCORDANCE WITH THE STATUTES  
OF THE STATE OF OREGON AND THE ARTICLES OF MY CONTRACT.

*Kurt C. Weaver*  
KURT C. WEAVER, O.R.P.L.S. 1679

SURVEY NARRATIVE TO COMPLY WITH O.R.S. 209.250.

Survey for: Rogue River National Forest  
P.O. Box 520  
Medford, Oregon 97501

Location: Located in Sections 14 and 23, Township 32 South, Range 2 East of the Willamette Meridian, Jackson County, Oregon.

Purpose: To subdivide said Sections 14 and 23 in order to monument the corner positions as shown on the accompanying maps. Also to mark the boundary between Forest Service and private ownership with signs attached to aluminum posts and blazed trees per U.S.F.S. contract specifications.

Procedure: The corners along the north line of Section 14 were previously set by proportionate measurement by Roger Kauble during the performance of filed survey no. 9764. The south quarter corner of Section 23 was previously set via proportionate measurement by this surveyor during the performance of filed survey no. 8914.

The east quarter corner of Section 23 was set on this survey at proportionate position after extensive search for the original corner proved fruitless.

All of the remaining controlling corners were remonumentations of the original corner positions. These controlling corners as well as the monumented proportion corners were incorporated in a series of closed traverses. The sections were then subdivided as shown on the accompanying maps. The interior lines were traversed with random lines, and then marked from offsets to the true line.

The following monuments were tied or set, and the accessories to same were recorded as follows:

Section corner  $\frac{15}{22} | \frac{14}{23}$ : Found a 1 inch galvanized iron pipe with a 2-1/2 inch brass cap exposed 1 inch in a mound of stone from which:

- White Fir snag 15" dia. bears S 77°39'E 23.4 ft.  
(record S 77-1/4°E 23.8 ft.)
- White Fir 12" dia. bears S 65°28'E 96.1 ft.  
(record S 64-3/4°E 96.1 ft.)
- Douglas Fir 16" dia. bears N 7°34'W 137.2 ft.  
(record N 6-3/4°W 137.6 ft.)
- White Fir 12" dia. bears N 55°27'E 113.7 ft.  
(record N 56-1/2°E 113.8 ft.)

I set a 5/8 inch x 24 inch iron pin with a yellow plastic cap marked WEAVER L.S. 1679 as a R.M. flush with the ground which bears S 50°46'W 10.47 feet.

1/4 Corner  $15 | 14$ : Found a 1 inch galvanized iron pipe with a 2 inch expander filled with pot metal, exposed 19 inches in a mound of stone from which:

- Douglas Fir 16" dia. bears N 57°00'W 28.7 ft.  
(record N 53-1/2°W 29.25 ft.)
- Douglas Fir 20" dia. bears N 49°34'E 27.1 ft.  
(record N 49°E 27.0 ft.)
- Douglas Fir 15" dia. bears S 58°02'E 7.2 ft.  
(record S 60°E 6.6 ft.)

Douglas Fir 15" dia. bears S 58°02'E 7.2 ft.  
(record S 60°E 6.6 ft.)

10|11  
Section corner 15|14: Found a 2 inch galvanized iron pipe with a 2-1/2 inch brass cap exposed 7" in a mound of stone, from which:

White Fir 17" dia. bears S 44°37'E 29.6 ft.  
(record S 44-3/4°E 30.2 ft.)  
White Fir 16" dia. bears S 22°23'W 95.1 ft.  
(record S 22 1/4°W 95.2 ft.)  
White Fir 7" dia. bears N 55°36'W 29.2 ft.  
(record N 55-1/4°W 29.2 ft.)  
Chinquapin 10" dia. bears N 55°24'E 25.0 ft.  
(record N 55-3/4°E 24.9 ft.)

11  
1/4 corner 14: Found a 2 inch galvanized iron pipe with a 2-1/2 inch brass cap exposed 5 inches in a mound of stone, from which:

Douglas Fir 10" dia. bears S 56°04'E 37.6 ft.  
(record S 56°E 37.6 ft.)  
Douglas Fir, easterly fork of double trunk, 7" dia. bears  
N 50°12'E 12.4 ft.  
(record N 50-1/4°E 12.3 ft.)

11|12  
Section corner 14|13: Found a 2 inch galvanized iron pipe with a 2-1/2 inch brass cap exposed 3 inches in a mound of stone, from which:

White Fir 7" dia. bears S 79°35'W 36.3 ft.  
(record S 79-1/2°W 36.9 ft.)  
White Fir 14" dia. bears N 60°00'W 33.0 ft.  
(record N 60-1/4°W 33.5 ft.)  
Incense Cedar 10" dia. bears N 54°04'E 31.2 ft.  
(record N 54°E 31.6 ft.)  
Incense Cedar 15" dia. bears S 35°06'E 16.9 ft.  
(record S 35°E 17.3 ft.)

1/4 corner 14|13: Found a 1 inch galvanized iron pipe with a 2 inch expander filled with pot metal exposed 8 inches in a mound of stone, from which:

White Fir 13" dia. bears N 36°30'E 63.0 ft.  
(record N 35-1/2°E 63.35 ft.)  
White Fir 19" dia. bears S 40°15'W 39.5 ft.  
(record S 39°W 39.3 ft.)  
White Fir 21" dia. bears S 76°43'W 12.8 ft.  
(record S 75°W 13.2 ft.)

14|13  
Section corner 23|24: Found a 2 inch galvanized iron pipe with a 2-1/2 inch brass cap exposed 3 inches in a mound of stone, from which:

White Fir 18" dia. bears N 11°51'E 12.5 ft.  
(record N 12°E 12.35 ft.)  
White Fir 14" dia. bears S 43°31'E 39.6 ft.  
(record S 42°E 39.70 ft.)  
White Fir 34" dia. bears S 3°58'W 174.2 ft.  
(record S 6°W 174.3 ft.)  
White Fir 24" dia. bears N 31°53'W 35.6 ft.  
(record N 31°W 35.25 ft.)

14

1/4 corner 23: Found a 1 inch galvanized iron pipe with a 2-1/2 inch brass cap exposed 6 inches with the original 1/4 section tree alongside, from which:

White Fir 14" dia. bears S 48°26'W 36.2 ft.  
(record S 48°W 36.25 ft.)  
White Fir 11" dia. bears N 68°41'W 10.1 ft.  
(record N 70°W 10.00 ft.)  
Douglas Fir 19" dia. bears N 59°40'E 6.0 ft.  
(record N 60°E 6.20 ft.)

1/4 corner 22|23: Found 1 inch galvanized iron pipe with a 2-1/2 inch brass cap exposed 2 inches in a mound of stone, from which:

White Fir 15" dia. bears S 30°51'W 36.2 ft.  
(record S 31°W 36.2 ft.)  
Douglas Fir snag 32" dia. bears S 44°44'W 36.1 ft.  
(record S 45°W 36.1 ft.)  
Incense Cedar 33" dia. bears N 10°32'E 45.5 ft.  
(record N 11-1/4°E 45.0 ft.)

1/4 corner 23|24: I set a 2 inch x 30 inch galvanized iron pipe with a 2-1/2 inch brass cap exposed 16 inches in a mound of stone and mark the following trees:

Incense Cedar 11" dia. bears S 52°29'W 3.5 ft.  
marked 1/4 S 23 BT.  
Douglas Fir 21" dia. bears S 61°54'E 36.9 ft.  
marked 1/4 S 24 BT.

23|24

Section corner 26|25: Found a 1 inch galvanized iron pipe with a 2 inch expander filled with pot metal exposed 9 inches, from which:

White Fir 12" dia. bears S 22°04'W 20.6 ft.  
Fir snag 14" dia. bears N 32°32'W 11.4 ft.  
White Fir 13" dia. bears S 31°04'E 24.5 ft.  
White Fir 10" dia. bears N 69°23'W 14.5 ft.  
Incense Cedar 19" dia. bears N 60°47'E 93.5 ft.  
(note all trees record from survey no. 8914)

23

1/4 corner 26: Found a 2 inch galvanized iron pipe with a 2-1/2 inch brass cap exposed 6 inches, from which:

Douglas Fir 9" dia. bears S 28°01'W 93.7 ft.  
Douglas Fir 18" dia. bears N 11°40'W 38.2 ft.  
(note all trees record from survey no. 8914)

CN 1/16 Sec. 14: Set a 2 inch x 30 inch galvanized iron pipe with a 2-1/2 inch brass cap exposed 8 inches in a mound of stone and mark the following trees:

White Fir 7" dia. bears S 87°38'E 15.6 ft.  
marked CN 1/16 S 14 BT  
White Fir 6" dia. bears S 23°31'E 12.2 ft.  
marked CN 1/16 S 14 BT  
Found 1" G.I.P. with a 2" expander filled with pot metal  
bears N 83°37'44"E 23.81 ft.

C 1/4 Sec. 14: Set a 2 inch x 30 inch galvanized iron pipe with a 2-1/2 inch brass cap exposed 24 inches in a mound of stone and mark the following trees:

Douglas Fir 15" dia. bears S 13°41'E 19.5 ft.  
marked C 1/4 S 14 BT

Incense Cedar 20" dia. bears S 67°27'W 10.1 ft.  
 marked C 1/4 S 14 BT  
 Found 1" G.I.P. with a 2" expander filled with pot metal  
 bears S83°28'02"E 15.67 ft.

CW 1/16 Sec. 14: Set a 2 inch x 30 inch galvanized iron pipe with  
 a 2-1/2 inch brass cap exposed 12 inches in a mound of stone and  
 mark the following trees:

White Fir 17" dia. bears S 46°27'W 15.4 ft.  
 marked CW 1/16 S 14 BT  
 Incense Cedar 7" dia. bears S 57°42'E 15.9 ft.  
 marked CW 1/16 S 14 BT  
 Found 1" G.I.P. with a 2" expander filled with pot metal  
 bears S70°19'11"E 7.55 ft.

SW 1/16 Sec. 14: Set a 2 inch x 30 inch galvanized iron pipe with  
 a 2-1/2 inch brass cap exposed 12 inches in a mound of stone and  
 mark the following trees:

White Fir 8" dia. bears N 32°19'E 10.6 ft.  
 marked SW 1/16 S 14 BT  
 White Fir 7" dia. bears N 78°41'W 9.6 ft.  
 marked SW 1/16 S 14 BT  
 Found 1" G.I.P. with a 2" expander filled with pot metal  
 bears S 75°00'30"E 4.32 ft.

CS 1/16 Sec. 14: Set a 2 inch x 30 inch galvanized iron pipe with  
 a 2-1/2 inch brass cap exposed 24 inches in a mound of stone and  
 mark the following trees:

White Fir 11" dia. bears N 40°35'E 9.9 ft.  
 marked CS 1/16 S 14 BT  
 White Fir 6" dia. bears S 37°13'E 11.8 ft.  
 marked CS 1/16 S 14 BT

N 1/16 15|14: Set a 2 inch x 30 inch galvanized iron pipe with a  
 2-1/2 inch brass cap exposed 12 inches in a mound of stone and  
 mark the following trees:

Douglas Fir 6" dia. bears S 66°12'W 18.3 ft.  
 marked N 1/16 S 15 BT  
 Douglas Fir 7" dia. bears S 23°10'E 14.4 ft.  
 marked N 1/16 S 14 BT  
 Found 1" G.I.P. with a 2" expander filled with pot metal  
 bears N52°47'28"W 12.77 ft.

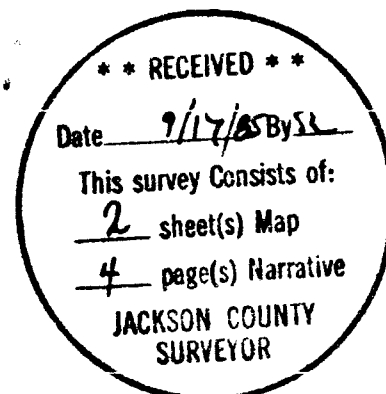
C 1/4 Sec. 23: Set a 2 inch x 30 inch galvanized iron pipe with a  
 2-1/2 inch brass cap exposed 2 inches and mark the following  
 trees:

White Fir 13" dia. bears N 30°52'E 91.2 ft.  
 marked C 1/4 S 23 BT  
 Incense Cedar 12" dia. bears S 70°36'W 57.4 ft.  
 marked C 1/4 S 23 BT

Bearing was based on filed survey number 8914.

Surveyed by: Kurt C. Weaver  
 616 China Gulch Road  
 Jacksonville, Oregon 97530

Date: Survey began June 3, 1985 and was completed on July 24, 1985.



MAP OF SURVEY

Located in Sections 14 and 23, Township 32 South, Range 2 East of the Willamette Meridian, Jackson County, Oregon.

for

The U.S. FOREST SERVICE

REF. CONTRACT NO. 43-04N7-5-495

sheet 2 of 2 sheets

BASIS OF BEARING: Filed Survey No. 8914.

○ Found monument as shown. (SEE NARRATIVE)

● Set 2"x 30" flanged galvanized iron pipe with a 2 1/2" brass cap.

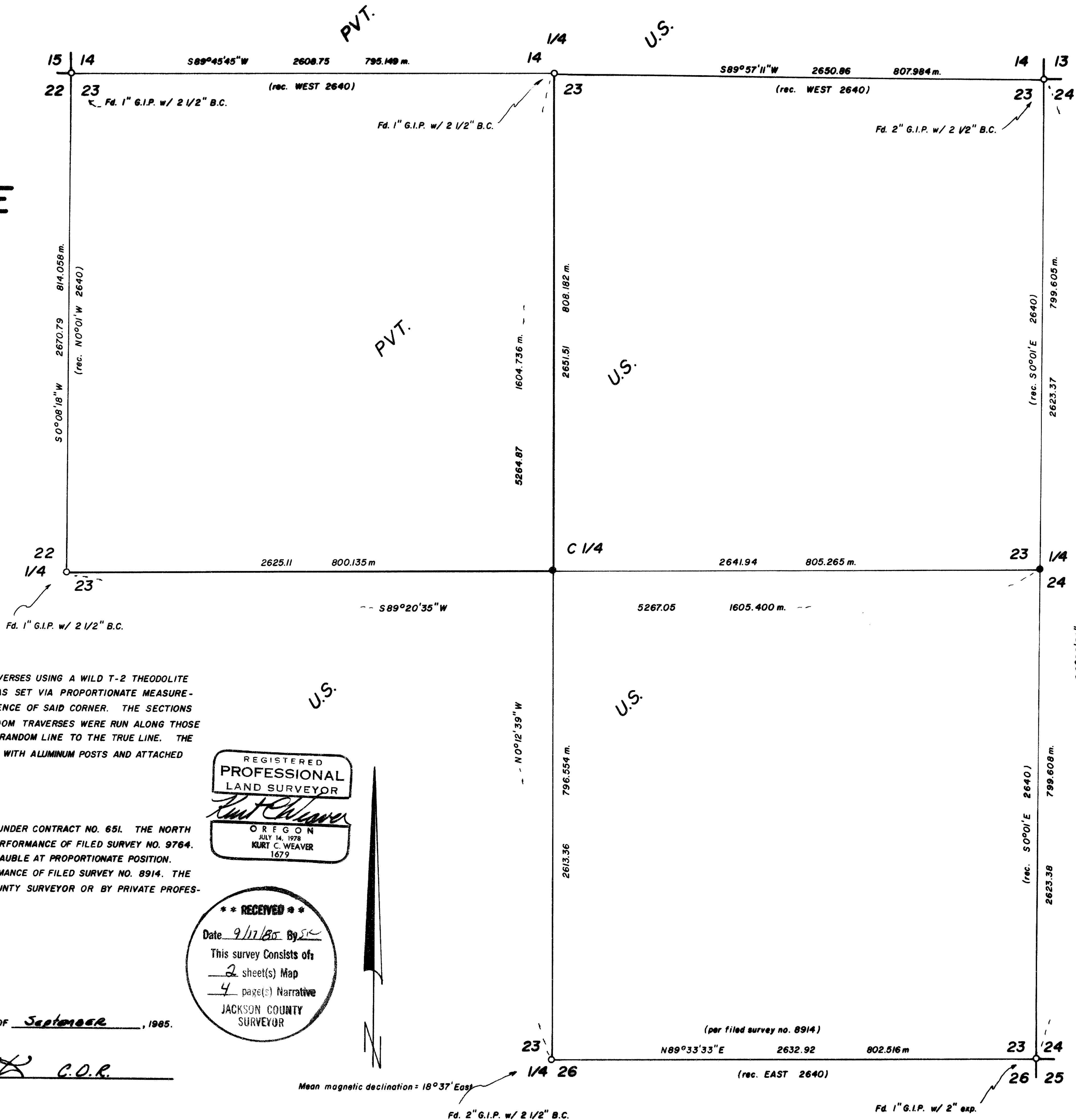
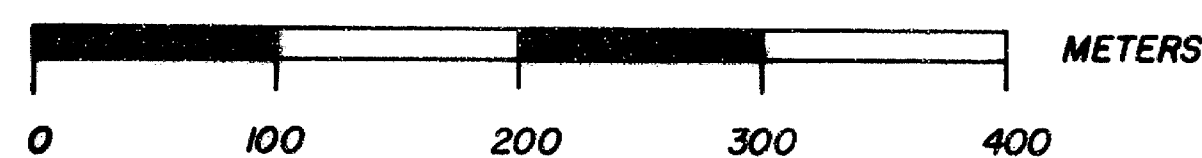
SCALE: 1 inch = 400 feet

1 meter = 3.28083333 feet

REF: Fieldbooks 1 and 2 of 2 WHETSTONE CADASTRAL SURVEY, CONTRACT NO. 43-04N7-5-495.

DATE: Survey began June 3, 1985

Completed July 24, 1985.



PROCEDURE:

ALL CONTROLLING CORNERS WERE INCORPORATED IN A SERIES OF CLOSED TRAVERSES USING A WILD T-2 THEODOLITE AND AN H.P. 3805A E.D.M. THE EAST QUARTER CORNER OF SECTION 23 WAS SET VIA PROPORTIONATE MEASUREMENT AFTER EXTENSIVE FIELD SEARCH FAILED TO YIELD ANY ORIGINAL EVIDENCE OF SAID CORNER. THE SECTIONS WERE SUBDIVIDED AS SHOWN HEREON OR ON THE ACCOMPANYING SHEET. RANDOM TRAVERSES WERE RUN ALONG THOSE LINES TO BE MARKED AND POSTED, THE OFFSETS WERE MEASURED FROM THE RANDOM LINE TO THE TRUE LINE. THE LINES BETWEEN NATIONAL FOREST LANDS AND OTHER OWNERSHIP WERE MARKED WITH ALUMINUM POSTS AND ATTACHED SIGNS, AND BLAZED TREES.

HISTORY:

SECTIONS 14 AND 23 WERE ORIGINALLY SURVEYED BY PETER APPLIGATE IN 1896 UNDER CONTRACT NO. 651. THE NORTH LINE OF SECTION 14 WAS SURVEYED BY ROGER KAUBLE IN 1983 DURING THE PERFORMANCE OF FILED SURVEY NO. 9764. ALL THREE CONTROLLING CORNERS ALONG THIS LINE WERE MONUMENTED BY KAUBLE AT PROPORTIONATE POSITION. THE SOUTH 1/4 COR. OF Sec. 23 WAS SET BY KURT C. WEAVER DURING THE PERFORMANCE OF FILED SURVEY NO. 8914. THE REMAINING FOUND CONTROLLING CORNERS ARE REMONUMENTATIONS BY THE COUNTY SURVEYOR OR BY PRIVATE PROFESSIONAL LAND SURVEYORS.

EXAMINED AND ACCEPTED FOR THE U.S. FOREST SERVICE THIS 12<sup>TH</sup> DAY OF September, 1985.

*Handwritten signature: Harold J. C.D.R.*

REGISTERED PROFESSIONAL LAND SURVEYOR

*Handwritten signature: Kurt C. Weaver*

OREGON JULY 14, 1978 KURT C. WEAVER 1679

RECEIVED

Date 9/17/85 By SK

This survey consists of

2 sheet(s) Map

4 page(s) Narrative

JACKSON COUNTY SURVEYOR

Mean magnetic declination = 18°37' East