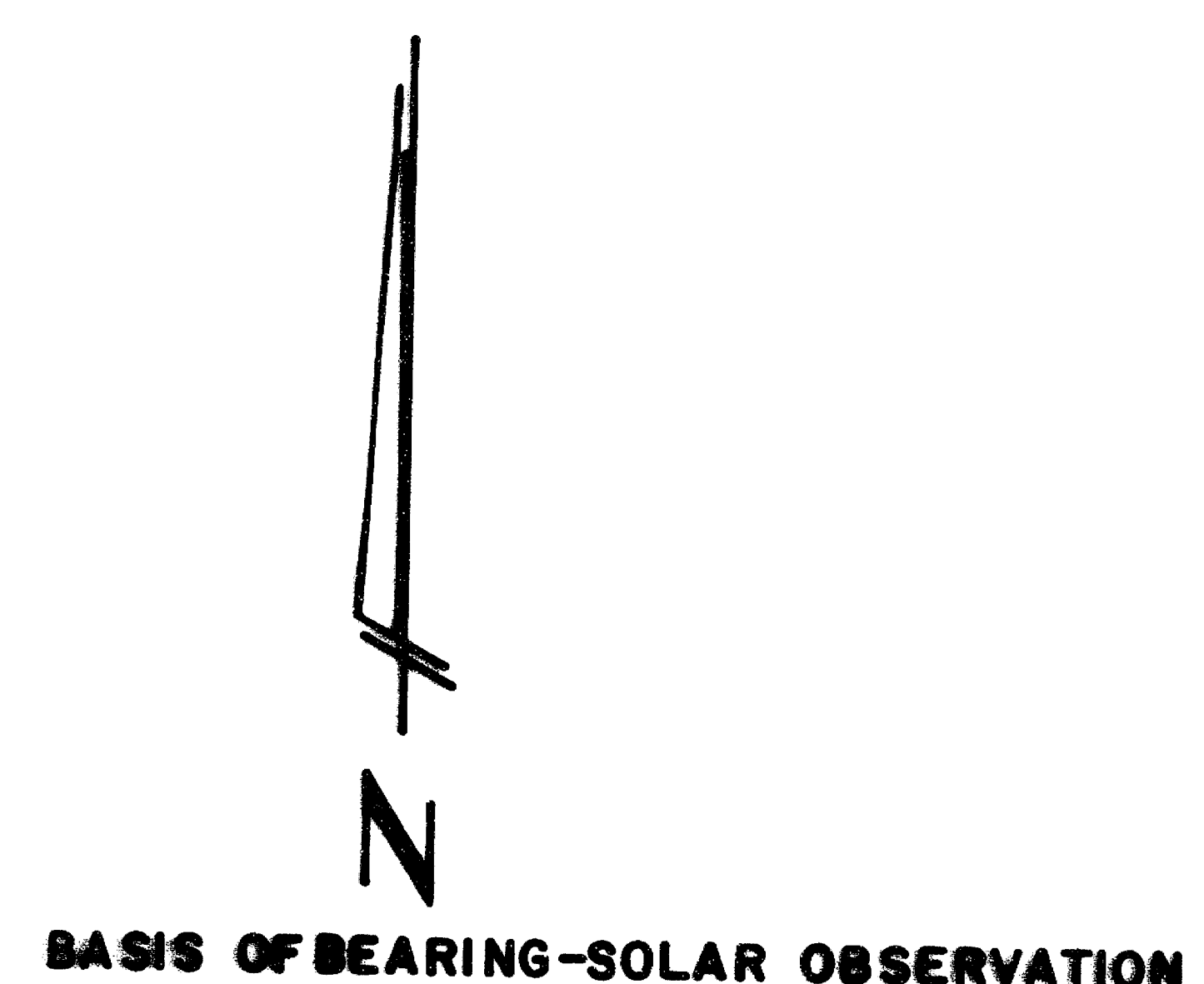
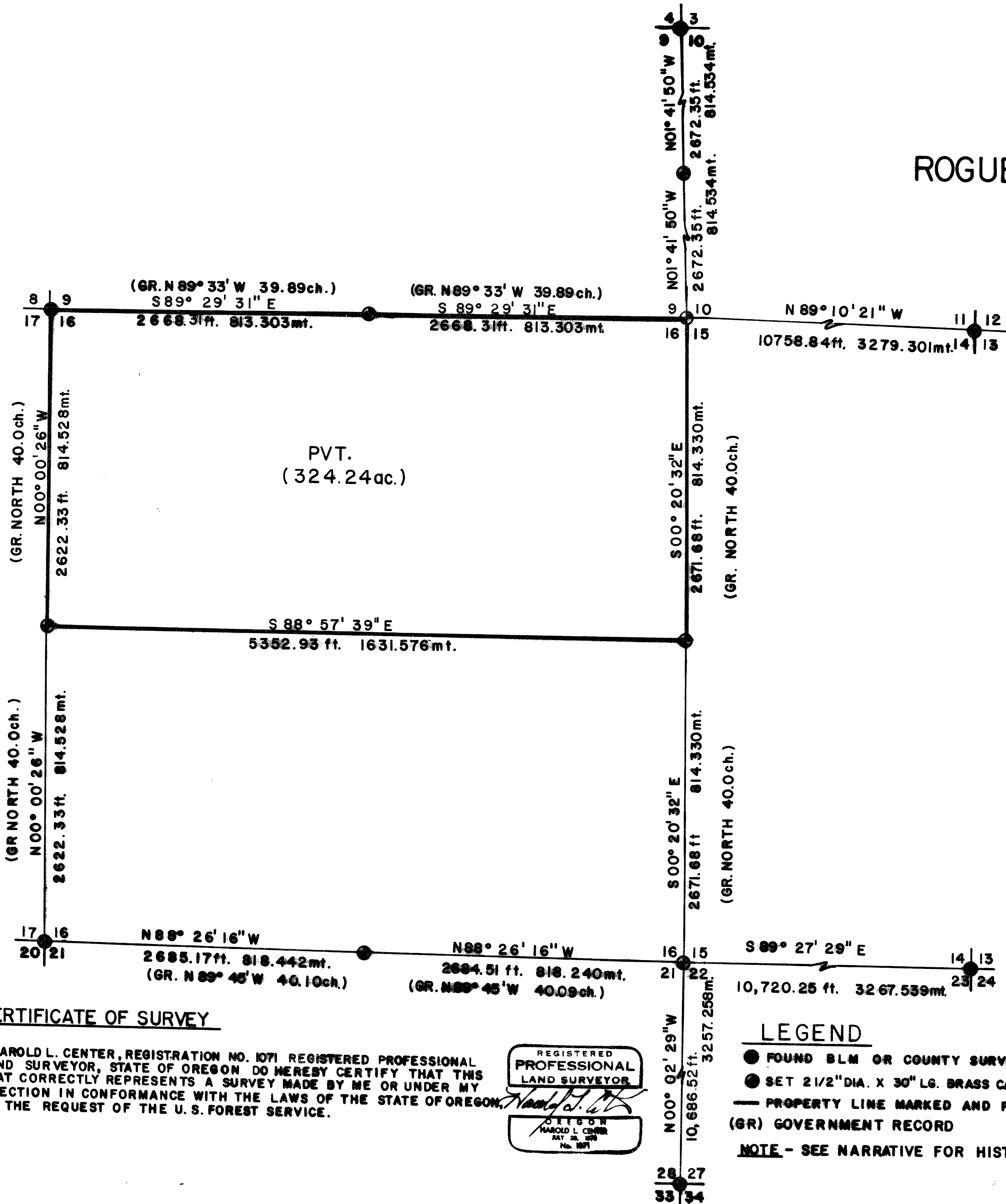


# MAP OF SURVEY FOR ROGUE RIVER NATIONAL FOREST P.O. BOX 520 MEDFORD, OREGON 97501

AUGUST 5, 1985



**\*\* RECEIVED \*\***  
Date 8/10/85 By [Signature]  
This survey consists of:  
1 sheet(s) Map  
7 page(s) Narrative  
JACKSON COUNTY SURVEYOR

**CERTIFICATE OF SURVEY**

I, HAROLD L. CENTER, REGISTRATION NO. 1071 REGISTERED PROFESSIONAL LAND SURVEYOR, STATE OF OREGON DO HEREBY CERTIFY THAT THIS PLAT CORRECTLY REPRESENTS A SURVEY MADE BY ME OR UNDER MY DIRECTION IN CONFORMANCE WITH THE LAWS OF THE STATE OF OREGON AT THE REQUEST OF THE U. S. FOREST SERVICE.

REGISTERED PROFESSIONAL LAND SURVEYOR  
[Signature]  
HAROLD L. CENTER  
REG. NO. 1071  
JULY 25, 1978

**LEGEND**

- FOUND BLM OR COUNTY SURVEYOR MONUMENT
- SET 2 1/2" DIA. X 30" LG. BRASS CAP MONUMENT
- PROPERTY LINE MARKED AND POSTED
- (GR) GOVERNMENT RECORD

**NOTE - SEE NARRATIVE FOR HISTORY OF SURVEYS**

U. S. DEPT. OF AGRICULTURE  
**FOREST SERVICE**  
REGION 6 ROGUE RIVER NAT. FOREST

**DEPENDENT RESURVEY**  
AND  
SECTION SUBDIVISION  
SECTION 16, T. 40 S., R. 3 W., W.M.  
JACKSON CO., OREGON

REVIEWED [Signature] DATE 8/29/85  
REVIEWED [Signature] DATE 8/29/85

SURVEY NARRATIVE TO COMPLY WITH  
PARAGRAPH 209.250 OREGON REVISED STATUTES

SURVEY FOR: Rogue River National Forest  
P. O. Box 520  
Medford, OR 97501

LOCATION: Section 16, Township 40 South, Range 3 West,  
Willamette Meridian, Jackson County, Oregon.

BASIS OF BEARING: Solar observation

PURPOSE: To monument property corners and mark and post property boundary lines separating National Forest and private lands within Section 16.

HISTORY OF SURVEYS: Original surveys of the township were performed by Samuel W. Lackland, Deputy Surveyor, under Contract No. 429 dated January 1882.

Original corner points used for control were re-monumented from original evidence by the Bureau of Land Management Division of Cadastral Surveys or the Jackson County Surveyor.

No other surveys of record were noted.

PROCEDURE: This survey was accomplished by photogrammetry. Prior to commencement of this survey, extensive corner search was performed within the area. Search areas were established by several different methods, neither evidence of the original corner points or blaze trees along the lines could be recovered. Due to the distance between controlling corners it was decided that the project could best be accomplished by photogrammetric process. The process began with the establishment of a horizontal and vertical ground survey network for project control.

Following the establishment of project control, all known corner points, control stations and projected corner points were marked with symmetrical targets centered over each station marker. Offset targets were established at corner locations not directly visible due to ground conditions and both targets and corner point tied as a part of a independent closed traverse. With all ground control and targets established, a flight map of the area was determined followed by stereoscopic flight of the area with a photoscale of 1:12000. Utilizing this photography, an analytical bridge (phototriangulation) was used to establish coordinate values for panelled points and natural objects. Analytical bridge of the area was performed by separate photogrammetrists in order to preclude errors and establish an accuracy check of the analytical bridge. Coordinates established by the second bridge were used as an accuracy check and all calculations were based on the first bridge data.

Utilizing the coordinate control data, I computed search areas for each corner point. Searches were performed for evidence of the original survey and corner points without success. Unable to locate evidence of the original corner points, I reestablish the corner points by proportionate measurement as shown on the attached map of survey.

Surveys were performed utilizing Wild T-2 Theodolite and Hewlett-Packard 3808A Electronic Distance Meters. Certain distances were measured utilizing DI-4 and DI4L Electronic Distance Meters.

Lines were posted utilizing metal posts with National Forest boundary signs attached. Trees along the line were blazed. Blazes were painted with red timber marking paint.

Corners Accepted For Control

Section corner to Sections 3, 4, 9 and 10, Township 40 South, Range 3 West.

At the corner point I found a standard Jackson County Surveyor brass cap monument marked:

Jackson County  
T40S R3W  
S4 | S3  
---+---  
S9 | S10  
1980

And the following references:

A 19-inch diameter fir bears S87°01'E, 10.04 feet distance.

A 20-inch diameter fir bears S63°56'E, 15.73 feet distance, with partial scribe visible.

A 14-inch diameter madrone bears S50°32'W, 32.92 feet distance.

A 14-inch diameter fir bears N27°40'W, 13.16 feet distance.

A 27-inch diameter fir bears N12°55'E, 20.64 feet distance.

Section corner to Sections 8, 9, 16 and 17, Township 40 South, Range 3 West.

At the corner point I found a standard Bureau of Land Management brass cap monument marked:

U.S. Dept. of Interior  
Unlawful to Disturb  
T40S R3W  
S8 | S9  
---+---  
S17 | S16  
1964  
Bureau of Land Management  
Cadastral Surveys

And the following references:

An 11-inch diameter fir bears S64°43'E, 25.50 feet distance. This tree dead and down.

A 17-inch diameter fir bears S16°44'E, 53.90 feet distance.

A 21-inch diameter fir bears S56°53'W, 73.90 feet distance. This tree now dead and broken at 20 feet above ground level.

A 10-inch diameter fir bears S57°19'W, 4.20 feet distance. This tree dead and broken.

An 8-inch diameter fir bears S68°48'W, 48.70 feet distance. Partial scribe visible.

A 33-inch diameter fir bears N19°02'W, 47.17 feet distance.

A 20-inch diameter fir bears N12°46'W, 26.56 feet distance.

A 30-inch diameter oak bears N42°00'E, 43.76 feet distance. This tree now dead and down.

An 18-inch diameter fir bears N74°51'E, 14.10 feet distance.

Section corner to Sections 11, 12, 13 and 14, Township 40 South, Range 3 West.

At the corner point I found a standard Bureau of Land Management brass cap monument marked:

U.S. Dept. of Interior  
Unlawful to Disturb  
T40S R3W

S11	S12
S14	S13

1964

Bureau of Land Management  
Cadastral Surveys

And the following references:

A 25-inch diameter oak bears S76°31'E, 70.80 feet distance, with scribe T40S R3W S13 BT visible.

A 26-inch diameter pine bears S80°49'W, 103.20 feet distance, with scribe 3W S14 BT visible.

A 36-inch diameter fir bears N43°47'W, 42.10 feet distance.

An 11-inch diameter pine bears N04°52'E, 18.80 feet distance.

Section corner to Sections 16, 17, 20 and 21, Township 40 South, Range 3 West.

At the corner point I found a standard Bureau of Land Management brass cap monument marked:

U.S. Dept. of Interior  
Unlawful to Disturb  
T40S R3W

S17	S16
S20	S21

1964

Bureau of Land Management  
Cadastral Surveys

And the following references:

An 18-inch diameter sawed pine stump bears S64°37'W, 16.78 feet distance with scribe marks visible.

A 14-inch diameter sawed madrone stump bears N76°37'W, 13.50 feet distance. Partial scribe visible.

A 7-inch diameter oak bears N31°33'W, 38.25 feet distance. Tree dead and decayed.

An 8-inch diameter pine bears N18°56'W, 20.43 feet distance, scribed T40S R3W S17 LS1071 BT.

A 28-inch diameter pine bears N07°58'E, 37.68 feet distance with scribe visible.

A 7-inch diameter oak bears N39°54'E, 31.00 feet distance.

A 19-inch diameter pine bears S59°01'E, 66.07 feet distance.

A 10-inch diameter madrone bears S37°34'W, 37.30 feet distance.

Section corners to Sections 13, 14, 23 and 24, Township 40 South, Range 3 West.

At the corner point I found a standard Jackson County Surveyor brass cap monument marked:

Jackson County	
T40S	R3W
S14	S13
S23	S24
1977	

And the following references:

A 10-inch diameter fir bears N57°04'W, 20.22 feet distance. This tree dead and down.

A 10-inch diameter madrone bears N47°20'W, 44.20 feet distance, scribed T40S R3W S14 LS1071 BT.

A 22-inch diameter fir bears N82°43'E, 37.50 feet distance.

A 17-inch diameter fir bears S21°53'E, 36.09 feet distance.

A 20-inch diameter madrone bears S53°50'W, 22.02 feet distance with partial scribe visible.

Section corner to Sections 27, 28, 33 and 34, Township 40 South, Range 3 East.

At the corner point I found a standard Jackson County Surveyor brass cap monument marked:

T40S	R3W	
28	27	
33	34	1980
C.S.		

And the following references:

A 7-inch diameter pine bears N84°13'W, 58.91 feet distance with scribe visible.

A 19-inch diameter oak bears N50°06'W, 42.33 feet distance. This tree dead and down. Partial scribe visible on open face.

A 14-inch diameter oak bears N19°53'E, 7.90 feet distance. This tree dead and down.

A 12-inch diameter oak bears N56°49'E, 57.40 feet distance with scribe visible.

A 16-inch diameter fir bears S29°22'E, 32.00 feet distance with scribe visible.

A badly decayed oak bears S16°12'E, 9.00 feet distance.

A 21-inch diameter oak bears S07°20'W, 47.93 feet distance.

Corners Established This Survey

One-quarter corner to Sections 9 and 10, Township 40 South, Range 3 West.

At the corner point I set a 2½ inch diameter galvanized iron post with a 2½ inch diameter brass cap marked:

T40S	R3W
	¼
9	10
	1985
	LS 1071

And the following references:

A 7-inch diameter fir bears N81°27'E, 32.50 feet distance, scribed ¼ S10 LS1071 BT.

No other suitable trees within limits.

One-quarter corner to Sections 9 and 16, Township 40 South, Range 3 West.

At the corner point I set a 2½ inch diameter galvanized iron post with a 2½ inch diameter brass cap marked:

T40S	R3W
	¼ $\frac{9}{16}$
	1985
	LS 1071

And the following references:

A 14-inch diameter fir bears N07°25'W, 29.58 feet distance, scribed ¼ S9 LS1071 BT.

An 8-inch diameter fir bears S81°08'W, 14.91 feet distance, scribed ¼ S16 LS1071 BT.

Section corner to Sections 9, 10, 15 and 16, Township 40 South, Range 3 West.

At the corner point I set a 2½ inch diameter galvanized iron post with a 2½ inch diameter brass cap marked:

T40S	R3W
S9	S10
S16	S15
	1985
	LS 1071

And the following references:

A 13-inch diameter pine bears N47°48'W, 21.90 feet distance, scribed T40S R3W S9 LS1071 BT.

A 19 inch diameter fir bears N54°19'E, 38.80 feet distance, scribed T40S, R3W S10 LS1071 BT.

A 15-inch diameter pine bears S56°57'E, 26.20 feet distance, scribed T40S R3W S15 LS1071 BT.

A 20-inch diameter pine bears S62°01'W, 24.90 feet distance, scribed T40S R3W S16 LS1071 BT.

One-quarter corner to Sections 16 and 17, Township 40 South, Range 3 West.

At the corner point I set a 2½ inch diameter galvanized iron post with a 2½ inch diameter brass cap marked:

T40S    R3W  
          ¼  
          |  
17    |    16  
          |  
          1985  
          LS 1071

And the following references:

A 9-inch diameter fir bears S44°46'W, 33.60 feet distance, scribed ¼ S17 LS1071 BT.

An 11-inch diameter fir bears S58°16'E, 43.30 feet distance, scribed ¼ S16 LS1071 BT.

One-quarter corner to Sections 15 and 16, Township 40 South, Range 3 West.

At the corner point I set a 2½ inch diameter galvanized iron post with 2½ inch diameter brass cap marked:

T40S    R3W  
          ¼  
          |  
16    |    15  
          |  
          1985  
          LS 1071

And the following references:

An 8-inch diameter oak bears N77°36'E, 65.30 feet distance, scribed ¼ S15 LS1071 BT.

A 23-inch diameter pine bears N78°24'W, 45.30 feet distance, scribed ¼ S16 LS1071 BT.

One-quarter corner to Sections 16 and 21, Township 40 South, Range 3 West.

At the corner point I set a 2½ inch diameter galvanized iron post with a 2½ inch diameter brass cap marked:

T40S    R3W  
          ¼    S16  
          |    S21  
          |  
          1985  
          LS 1071

And the following references:

A 33-inch diameter fir bears N10°46'E, 16.60 feet distance, scribed ¼ S16 LS1071 BT.

A 36-inch diameter pine bears S70°19'W, 77.90 feet distance, scribed ¼ S21 LS1071 BT.

Section corner to Sections 15, 16, 21 and 22, Township 40 South, Range 3 West.

At the corner point I set a 2 1/2 inch diameter galvanized iron post with a 2 1/2 inch diameter brass cap marked:

T40S	R3W
16	15
21	22

1985  
LS 1071

And the following references:

A 6-inch diameter oak bears N33°08'E, 15.70 feet distance, scribed T40S R3W S15 LS1071 BT.

A 9-inch diameter oak bears N19°33'W, 45.20 feet distance, scribed T40S R3W S16 LS1071 BT.

An 8-inch diameter oak bears S65°07'W, 22.60 feet distance, scribed T40S R3W S21 LS1071 BT.

An 8-inch diameter oak bears S19°20'E, 15.1 feet distance, scribed T40S R3W S22 LS1071 BT.

August 5, 1985

HAROLD L. CENTER  
Registered Professional Land Surveyor  
Oregon Certificate No. 1071

