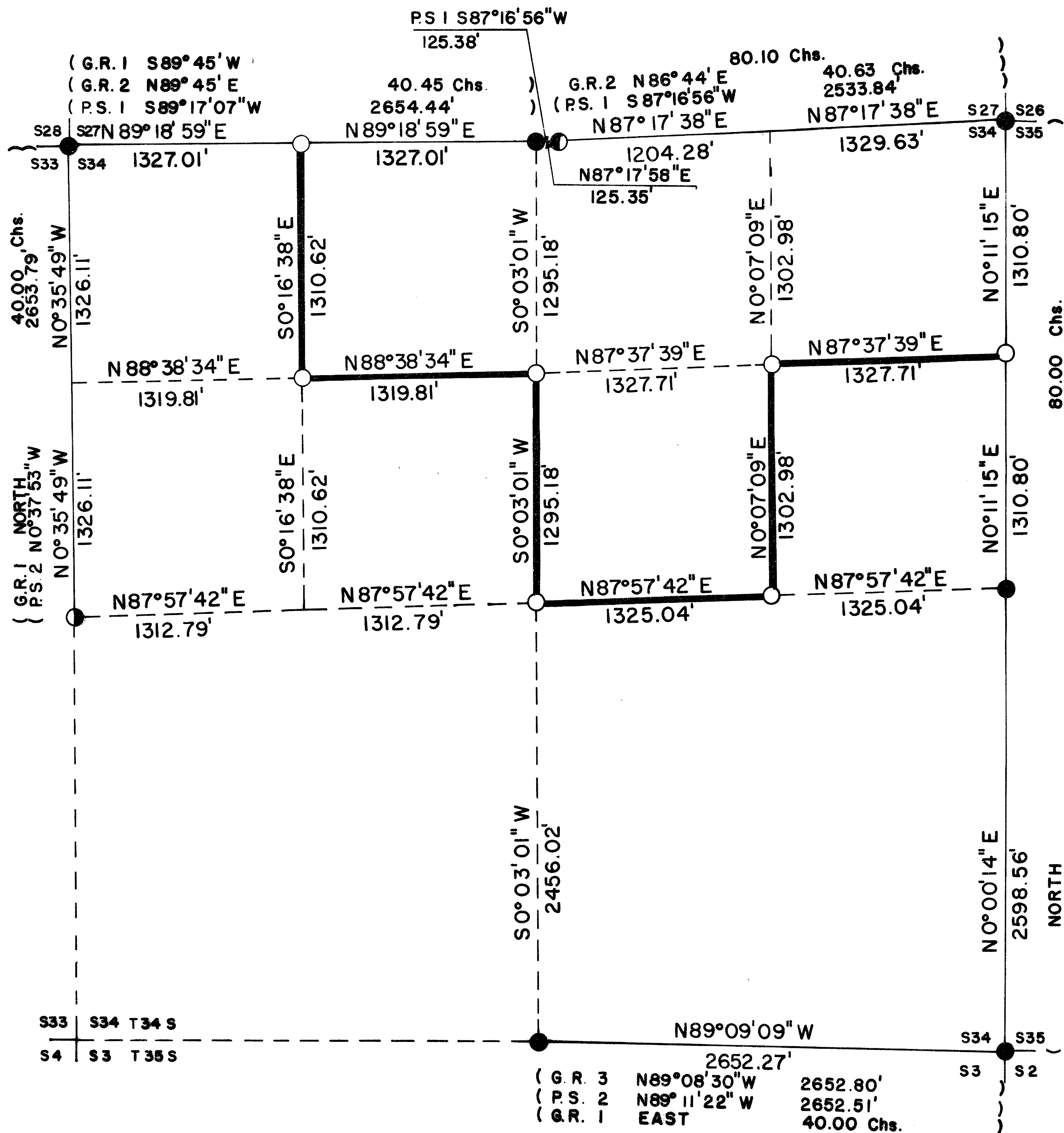


S34 T34S R2E W.M.



CERTIFICATE OF SURVEY

I, ARTHUR R. RAMBO, REGISTRATION No. 1086 REGISTERED PROFESSIONAL LAND SURVEYOR STATE OF OREGON, HEREBY CERTIFY THAT THIS MAP CORRECTLY REPRESENTS A SURVEY MADE BY ME OR UNDER MY DIRECTION IN CONFORMANCE WITH THE LAWS OF THE STATE OF OREGON.



LEGEND

- SET 5/8" BY 30" REBAR WITH 1 1/2" ALUM. CAP
- FOUND STANDARD BLM MONUMENT
- ⊙ FOUND MONUMENT SET SURVEY No. 6458
- ⊙ FOUND MONUMENT SET SURVEY No. 8784

- G.R.-1 1856 GOVERNMENT RECORD
- G.R.-2 1908 GOVERNMENT RECORD
- G.R.-3 1979 GOVERNMENT RECORD
- P.S.-1 PRIVATE SURVEY No. 8784
- P.S.-2 PRIVATE SURVEY No. 6458

█ LINE POSTED AND BLAZED THIS SURVEY

BASIS OF BEARING

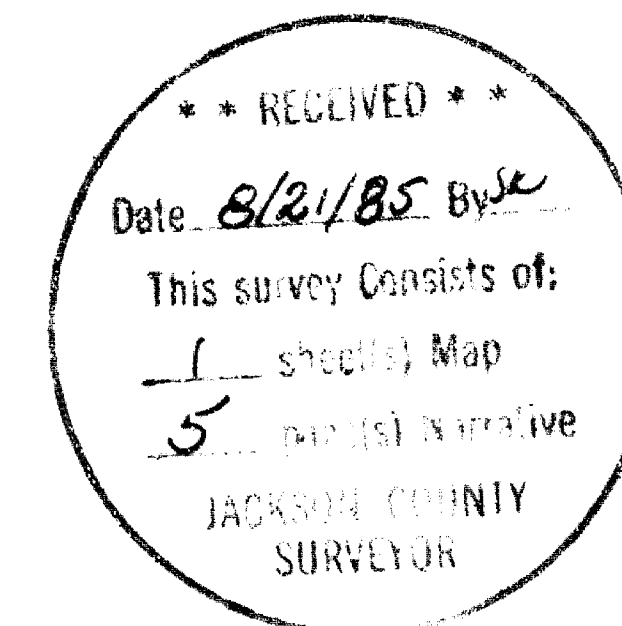
SOLAR OBSERVATION

SCALE

1" = 500'

DATE

AUG. 20, 1985



## SURVEY NARRATIVE TO COMPLY WITH O.R.S. 209.250

Location: Section 34, Township 34 South, Range 2 East, Willamette Meridian, Jackson County, Oregon

Survey for: Medford Resources Corporation  
P. O. Box 550  
Medford, Oregon 97501

Survey by: Arthur R. Rambo PLS 1086  
214 Tracy  
Eagle Point, Oregon 97524

Date: August 20, 1985

Purpose: To mark and post the boundaries of Medford Resources Corporation land in the Northwest and Northeast one-quarters of said section.

Procedure: The original survey of Section 34 was completed by Nathaniel Ford under contract #58 dated April 18, 1855. The North line of Section 34 was resurveyed by Eugene B. Henry under contract #774 dated January 30, 1908.

Harold Center completed a resurvey of the North line of Section 34 on survey #8784 for Section 27 and set the one-quarter corner for Section 27 only. The Bureau of Land Management, Cadastral Surveyors have reestablished the Northwest, North one-quarter, Northeast, East one-quarter, Southeast, and South one-quarter corners from original evidence. Lorne Swearingen (RE 4186) reestablished the West one-quarter corner from original evidence on survey #6458.

I performed a closed traverse survey with a T-16 theodolite and 3805A distance meter beginning at the Southeast corner, then I proceeded to the South one-quarter corner, then to the West one-quarter corner, then to the Northwest corner, then to the North one-quarter corner Section 34 only, then to the South one-quarter corner Section 27 only, then to the Northeast corner, then to the East one-quarter corner, then back to the Southeast corner closing the survey. Then I performed a closed traverse survey of the interior lines needed, beginning and closing on the exterior lines of the section. I set corners and posted lines as shown on the plat to accompany this narrative.

CORNERS FOUND AND ACCEPTED FOR CONTROL:

All measurements to bearing trees are to the center of tree at the base unless otherwise stated.

Section corner common to Sections 34 and 35, Township 34 South, Range 2 East, and Sections 2 and 3, Township 35 South, Range 2 East. At the section corner I found a standard Bureau of Land Management monument exposed 5 inches in a mound of stone, Brass cap marked:

T34S	R2E
S34	S35
S3	S2
T358	
1978	

From which:

An 8 $\frac{1}{2}$  inch dia. Oak bears S 81° 19' W 31.4 feet with unopened face.

Tax Lot #34-2E-08100

- A 9½ inch dia. Oak bears N 44° 02' W 57.4 feet with rotted out face,  
no scribes visible.  
A 33½ inch dia. Fir snag bears N 18° 12' W 38.9 feet with scribes pitched over.  
An 8½ inch dia. Fir bears N 64° 47' E 22.1 feet with unopened face.  
A 12½ inch dia. Oak bears N 78° 41' E 37.1 feet with rotted out face,  
no scribes visible.  
A 12 inch dia. Fir bears S 17° 09' E 70.8 feet with unopened face.

One-quarter corner common to Section 34, Township 34 South, Range 2 East and Section 3, Township 35 South, Range 2 East. At the corner location I found a standard Bureau of Land Management monument, in a 3 foot high by 5 foot diameter mound of stone, Brass cap marked:

T34S	R2E
$\frac{1}{4}$	<u>S34</u>
4	S3
T35S	
1978	

From which:

- A 21 inch dia. Pine bears N 39° 15' W 48.4 feet with scribes visible in partially healed face.  
An 11 inch dia. Oak bears S 61° 49' W 106.5 feet with scribes visible in partially healed face.

One-quarter corner common to Sections 33 and 34, Township 34 South, Range 2 East. At the corner location I found monument set on survey #6458, 1½ inch dia. Alum. cap on 5/8 inch dia. rebar, Alum cap marked:

RE 4186	
S33	$\frac{1}{4}$ S34
	4
T34S R2E	

From which:

- A 4½ inch dia. Oak bears N 74° 27' E 5.0 feet with marked RE 4186 BT.  
A 6½ inch dia. Oak bears N 22° 57' W 35.7 feet with marked RE 4186 BT.

Section corner common to Sections 27, 28, 33, and 34, Township 34 South, Range 3 East. At the corner location I found a standard Bureau of Land Management monument marked:

T34S	R2E
<u>S28</u>	<u>S27</u>
S33	S34
1968	

From which:

- A 34½ inch dia. Pine bears N 15° 02' E 16.2 feet with scribe visible in chopped out face.  
An 8½ inch dia. Fir bears N 23° 21' W 46.7 feet with an unopened face.  
A 15½ inch dia. Fir bears S 25° 06' W 67.3 feet with an unopened face.  
A 37 inch. dia. Fir bears S 19° 18' E 13.1 feet with an unopened face.

North one-quarter corner Section 34, Township 34 South, Range 2 East. At the corner location I found a standard Bureau of Land Management monument, exposed 6 inches in a mound of stone, Brass cap marked:

$\frac{1}{4}$	S34
4	
T34S	R2E
1974	

From which:

- A 12½ inch dia. Fir stump bears S 50° 41' E 68.4 feet marked 1/4 S34 LS 1071 in upper face, BT in lower face.  
A 44 inch dia. Cedar stump bears S 22° 00' E 19.8 feet marked 1/4 BT in chopped out face.

A 29 inch dia. Fir stump bears S 60° 30' W 27.7 feet with part of lower healed over face left on stump.

I take two new bearing trees:

A 12½ inch dia. Fir bears S 19° 20' E 78.1 feet marked 1/4 S34 in upper face, BT with brass washer marked LS 1086 in lower face.  
An 18 inch dia. Fir bears S 51° 23' W 41.2 feet marked 1/4 S34 in upper face, BT with brass washer marked LS 1086 in lower face.

South one-quarter corner Section 27, Township 34 South, Range 2 East. At the corner location I found a 2½ inch dia. metal pipe in a mound of stone with a 2½ inch dia. Brass cap marked:

T34S R2E  
1/4 . S27  
1981  
LS 1071

From which:

A 15½ inch dia. Fir stump bears N 59° 30' W 38.6 feet with scribes visible in upper face, BT in lower face.  
A 16½ inch dia. Fir stump bears N 47° 27' E 14.7 feet with scribes visible in both upper face and lower face.

I take two new bearing trees:

A 7½ inch dia. Fir bears N 74° 47' W 44.8 feet marked 1/4 S27 in upper face, BT with brass washer marked LS 1086 in lower face.  
An 9½ inch dia. Fir bears N 33° 42' W 105.8 feet marked 1/4 S27 in upper face, BT with brass washer marked LS 1086 in lower face.

Section corner common to Sections 27, 34, and 35, Township 34 South, Range 2 East. At the corner location I found a standard Bureau of Land Management monument, exposed 6 inches, marked:

T34S R2E  
S27  
S34 | S35  
1968

From which:

A 58 inch dia. Fir bears S 46° 56' E 32.4 feet with healed face.  
A 13 inch dia. Fir bears S 43° 45' W 20.6 feet with scribe visible in a partially healed face.  
A 28 inch dia. Fir bears S 9° 06' W 8.1 feet with healed face.  
A 32 inch dia. Fir stump bears N 45° 18' W 17.4 feet with healed face.  
A stone with an + marked on top against the West side of monument.

One-quarter corner common to Sections 34 and 35, Township 34 South, Range 2 East. At the corner location I found a standard Bureau of Land Management monument in a mound of stone marked:

T34S R2E  
1/4  
S34 | S35  
1974

From which:

An 6½ inch dia. Fir bears N 83° 04' E 7.0 feet with a healed face.  
An 11 inch dia. Fir bears S 29° 20' W 11.5 feet with a healed face.

**CORNERS SET THIS SURVEY:**

All measurements to bearing trees are to the center of tree at the base unless otherwise stated. All bearing trees have a brass washer marked LS 1086 nailed to the BT face of tree.

West one-sixteenth corner between Sections 27 and 34, Township 34 South, Range 2 East, for Section 34 only. At the corner location I set a 5/8 by 30 inch rebar exposed 24 inches in a mound of stone with a 1½ inch dia. Alum. cap marked:

T34S R2E  
W 1/16  
|  
S34  
LS1086

From which:

An 14½ inch dia. Oak bears S 47° 39' E 84.3 feet marked W1/16 S34 in upper face,  
BT in lower face.

An 8 inch dia. Oak bears S 39° 49' W 24.9 feet marked W1/16 S34 in upper face,  
BT in lower face.

North one-sixteenth corner common to Sections 34 and 35, Township 34 South, Range 2 East. At the corner location I set a 5/8 by 30 inch rebar exposed 9 inches in a mound of stone with a 1½ inch dia. Alum. cap marked:

T34S R2E  
N 1/16  
S34 + S35  
LS1086

From which:

A 7 inch dia. Oak bears S 28° 56' W 10.4 feet marked N1/16 S34 in upper face,  
BT in lower face.

A 10½ inch dia. Oak bears N 27° 01' E 37.3 feet marked N1/16 S35 in upper face,  
BT in lower face.

Northwest one-sixteenth corner Section 34, Township 34 South, Range 2 East. At the corner location I set a 5/8 by 30 inch rebar exposed 6 inches in a mound of stone with a 1½ inch dia. Alum. cap marked:

T34S R2E  
S34  
NW + 1/16  
LS1086

From which:

A 12½ inch dia. Fir bears S 12° 59' W 10.3 feet marked NW1/16 S34 in upper face,  
BT in lower face.

A 9 inch dia. Fir bears N 54° 05' E 14.1 feet marked NW1/16 S34 in upper face,  
BT in lower face.

Centernorth one-sixteenth corner Section 34, Township 34 South, Range 2 East. At the corner location I set a 5/8 by 30 inch rebar exposed 8 inches in a mound of stone with a 1½ inch dia. Alum. cap marked:

T34S R2E  
S34  
CN + 1/16  
LS1086

From which:

A 9 inch dia. Pine bears N 40° 14' W 7.1 feet marked CN1/16 S34 in upper face,  
BT in lower face.

A 10 inch dia. Madrona bears N 32° 23' E 25.5 feet marked CN1/16 S34 in upper face,  
BT in lower face.

Northeast one-sixteenth corner Section 34, Township 34 South, Range 2 East. At the corner location I set a 5/8 by 30 inch rebar, exposed 10½ inches in a mound of stone, with a 1½ inch dia. Alum. cap marked:

T34S R2E  
S34  
NE + 1/16  
LS1086

10333

Survey No.  
Page 5 of 5

From which:

A 8 inch dia. Oak bears N 56° 20' E 32.8 feet marked NE1/16 S34 in upper face,  
BT in lower face.

A 1 1/2 inch dia. Madrona bears S 55° 11' W 20.1 feet marked NE1/16 S34 in upper face,  
BT in lower face.

Centereast one-sixteenth corner Section 34, Township 34 South, Range 2 East. At the  
corner location I set a 5/8 by 30 inch rebar in a mound of stone with a 1 1/2 inch dia.  
Alum. cap marked:

T34S R2E  
S34  
CE 1/16 +  
LS1086

From which:

A 9 inch dia. Madrona bears S 32° 05' W 15.1 feet marked CE1/16 S34 in upper face,  
BT in lower face.

A 14 inch dia. Oak bears S 72° 52' E 14.8 feet marked CE1/16 S345 in upper face,  
BT in lower face.

Center one-quarter corner Section 34, Township 34 South, Range 2 East. At the corner  
location I set a 5/8 by 30 inch rebar, exposed 10 inches, with a 1 1/2 inch dia. Alum.  
cap marked:

T34S R2E  
C1/4 + S34  
LS1086

From which:

A 6 inch dia. Oak bears S 1° 39' W 47.6 feet marked C1/4 S34 in upper face,  
BT in lower face.

A 9 inch dia. Oak bears S 56° 00' W 51.3 feet marked C1/4 S34 in upper face,  
BT in lower face.

\*\* RECEIVED \*\*  
Date 8/21/85 By SK  
This survey Consists of:  
1 sheet(s) Map  
5 page(s) Narrative  
JACKSON COUNTY  
SURVEYOR

REGISTERED  
PROFESSIONAL  
LAND SURVEYOR

*Arthur R. Rambo*

OREGON  
JULY 30, 1976  
ARTHUR R. RAMBO  
No. 1086