

M A P O F S U R V E Y

1082

FOR

Newton J. Alder,

Gold Hill, Oregon.

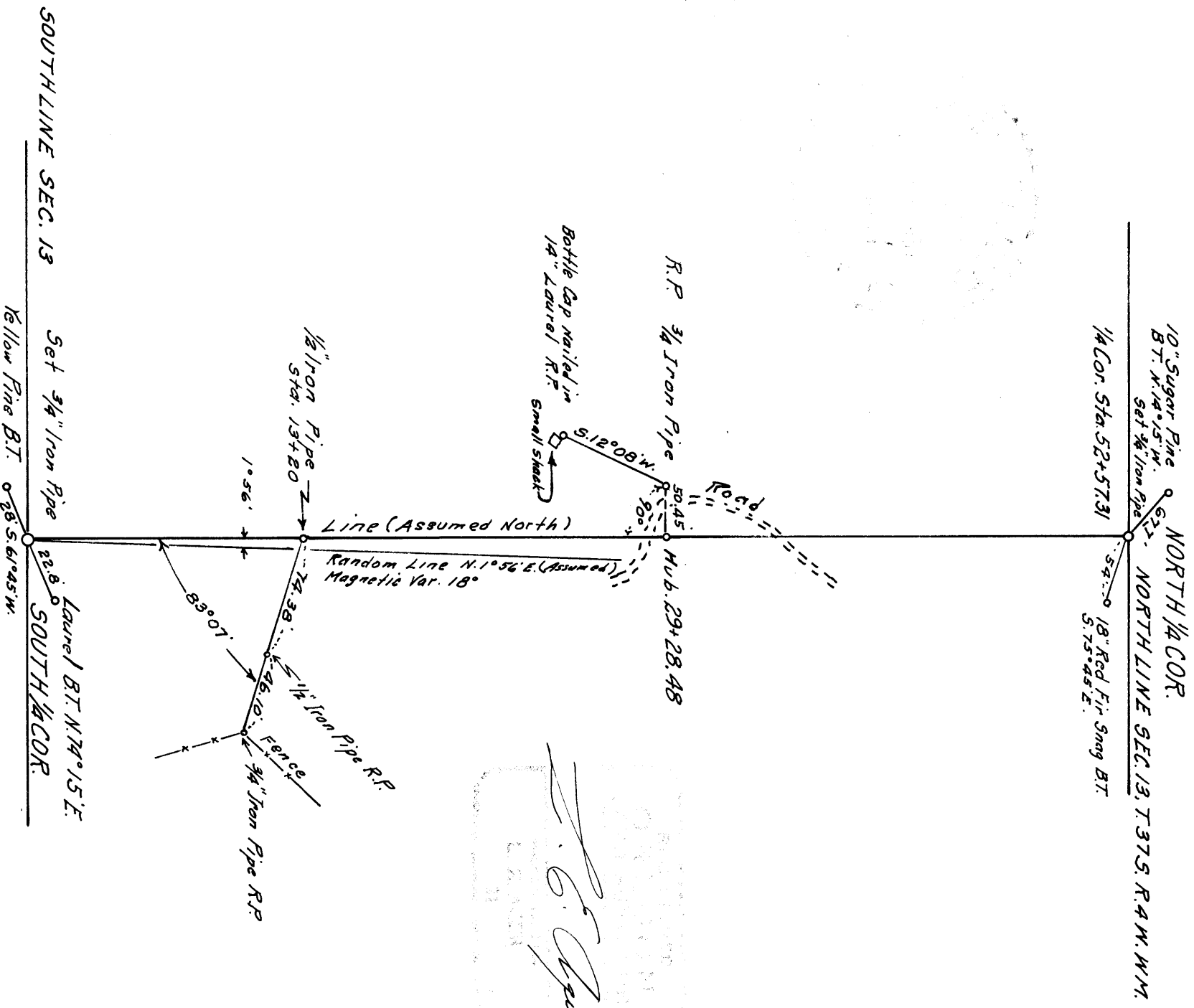
Located in Section 13, T. 37 S., R. 4 W., J.H., Jackson County, Oregon.

Surveyed: 11-7-57

Scale: 8" = 1 Mile.

No solar observation due to overcast.

All bearings shown are taken from the true line between the Quarter corners, this line assumed (North-South).



Survey narrative to comply with Section 87-330 Oregon State Law of 1947.

For: Newton J. Elder, Gold Hill, Oregon.

Purpose: To establish the north-south quarter Section line in Section 13, T.37 S., R.4 W., W.M., Jackson County, Oregon.

Procedure: I set an iron pipe $3/4$ " by 30" in place from the bearing trees according to the bearings and distances set forth in reestablish field notes for the North and South Quarter Corners, posts were set by the County Surveyor at the time these corners were reestablished and had rotted out. Set inst. on the south Quarter corner ran a random line North, compass var. 18° and tied to the north $1/4$ corner. Set hub and tack at a point 1320 feet north of south $1/4$ corner on random line and also hubs and tacks at various points along this line. All points were measured from the south $1/4$ corner. From the tie between corners the true line computed to be $1^{\circ}56'$ to the left of my random line and the distance on true line from corner to corner computed to be 5,257.71 feet. At the hub on random line 1320 feet from the south $1/4$ corner I set an iron pipe on true line 1320 feet north of south $1/4$ corner. Reset transit on south $1/4$ corner turning an angle $1^{\circ}56'$ left from random line on true line and set stakes at intervals along this line to the pipe set 1320 north, this line intersecting the pipe set from the random line proving computations of true line being correct. The pipe 1320 feet north is not represented to be a section subdivision corner but set and referenced to be used for future surveys if a section subdivision is called for. At a point 2,928.48 feet north on true line I set an iron pipe 50.45 feet west at right angles and referenced same for future use as the approx. center of the Section fall in the middle of a large pond.

REGISTERED
OREGON
LAND SURVEYOR

L. E. Acer
RECORDED 10, 1944
L. E. ACER
21

RECEIVED
JACKSON
NOV 12 1957
COUNTY
ENGINEER-SURVEYOR