

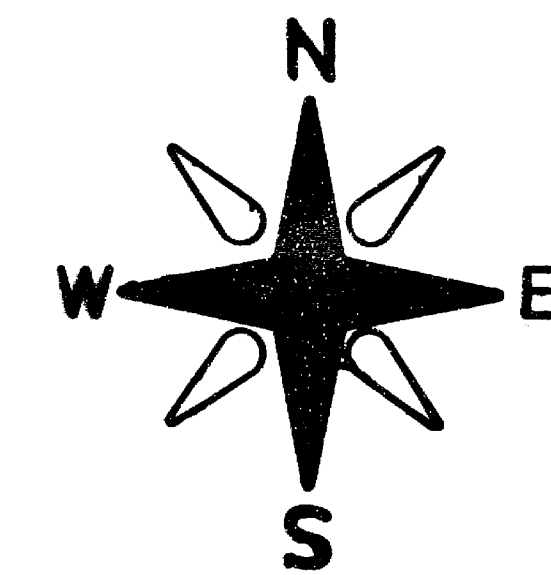
# MAP OF SURVEY

FOR

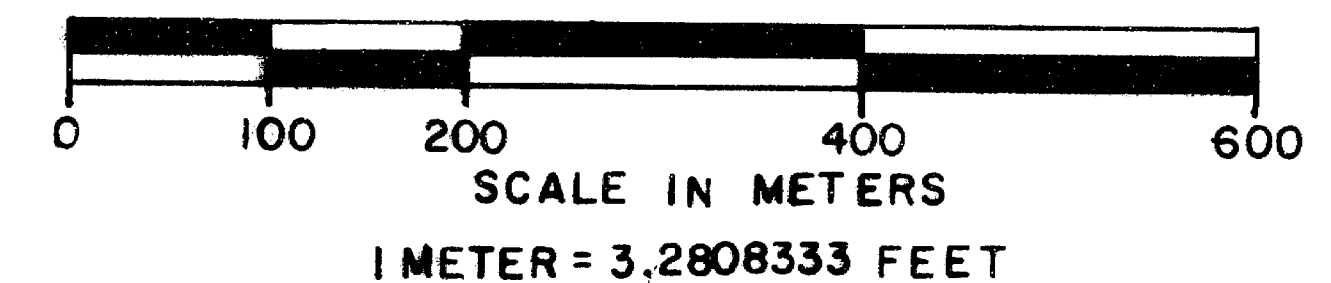
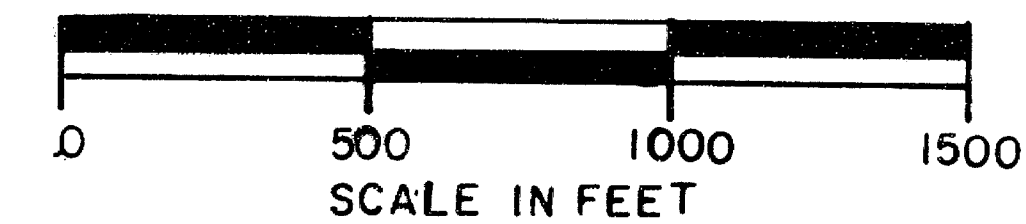
## ROGUE RIVER NATIONAL FOREST

P. O. BOX 520  
MEDFORD, OREGON

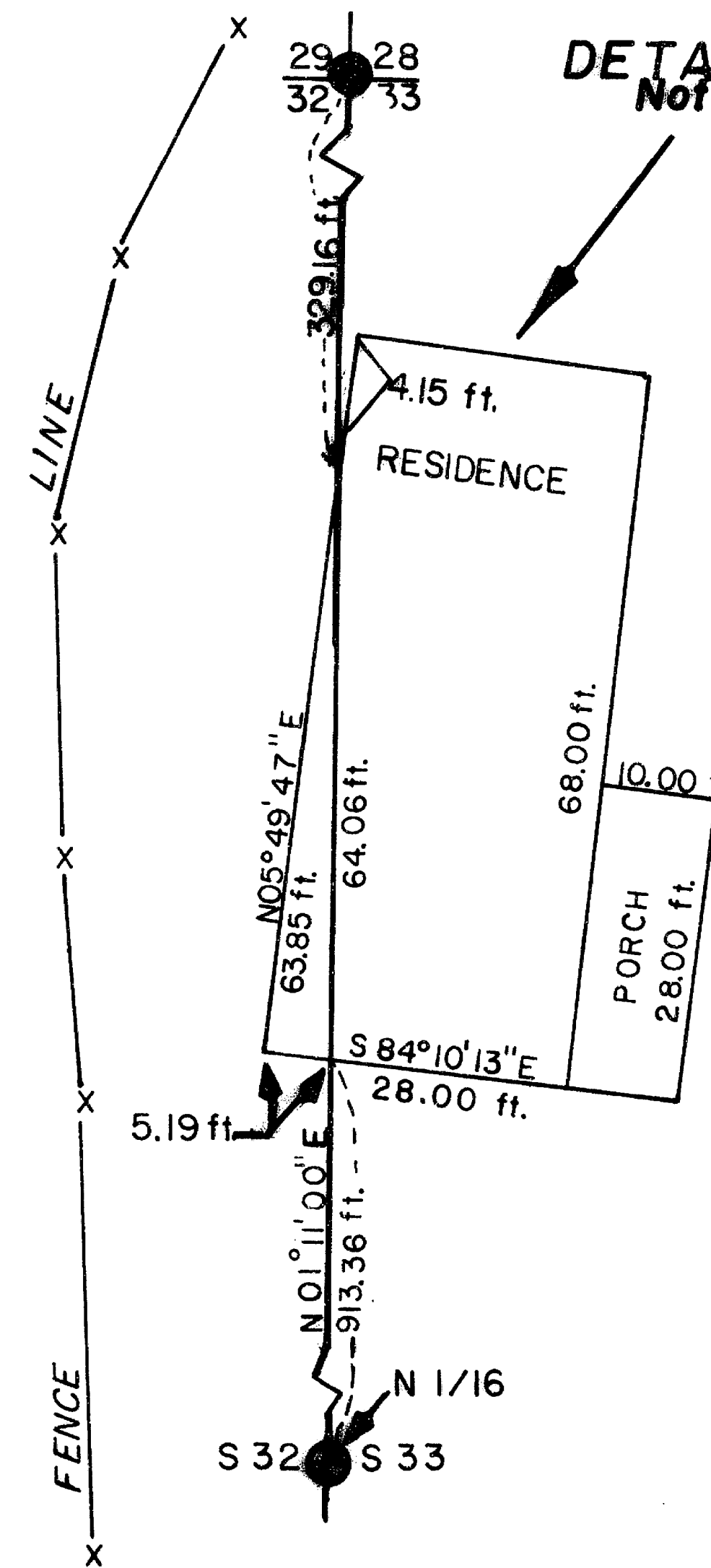
JUNE 20, 1985



BASIS OF BEARING: SOLAR OBSERVATION

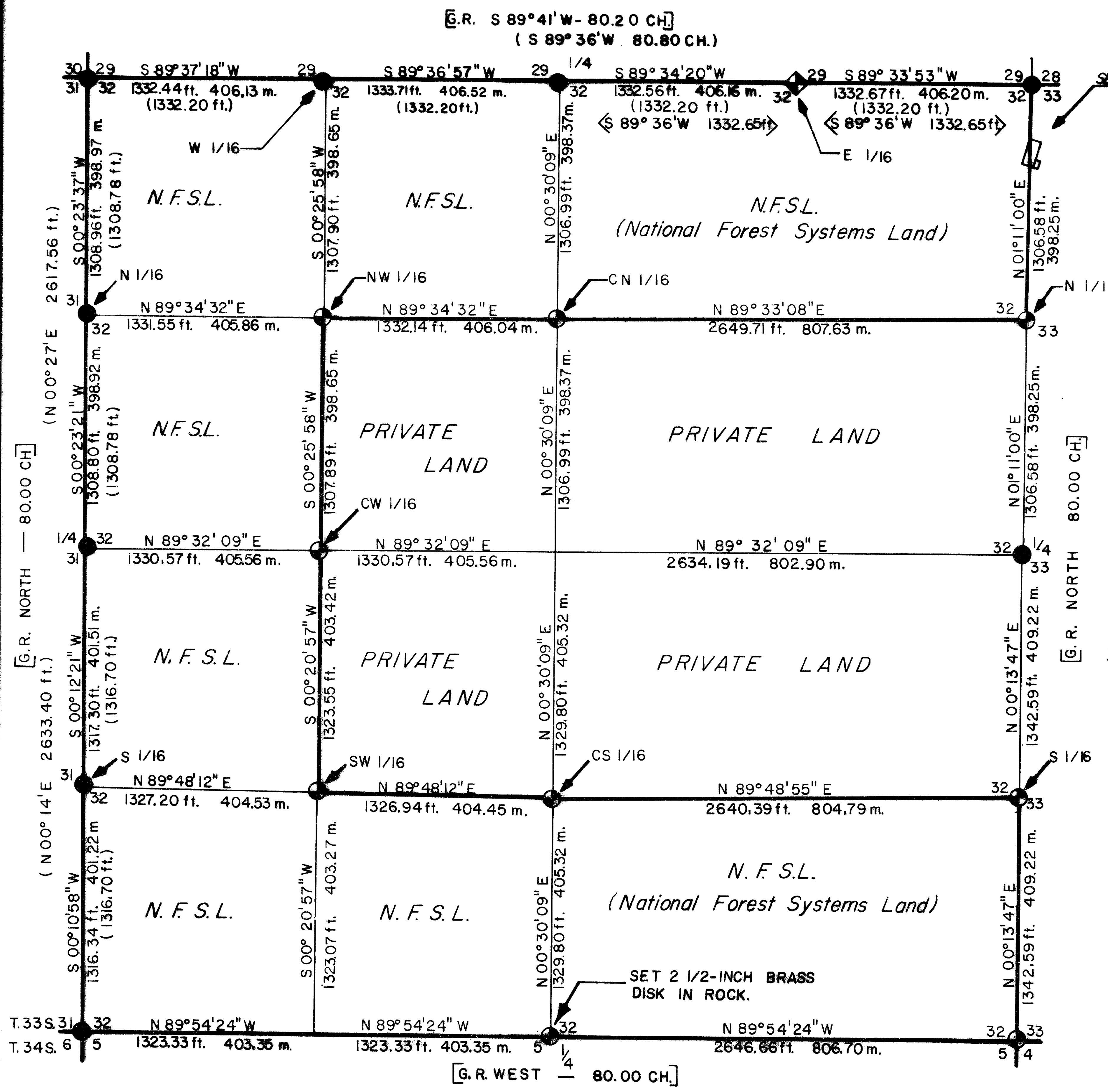


DETAIL "A"  
Not to scale



HISTORY OF SURVEYS: SEE ATTACHED NARRATIVE

RECEIVED  
Date 7/11/85  
This survey was done by  
Harold L. Center  
9/2/85



### LEGEND

- SET 2 1/2" x 30" IRON POST WITH 2 1/2" DIA. BRASS CAP UNLESS OTHERWISE NOTED.
- FOUND STANDARD BLM OR COUNTY SURVEYOR BRASS CAP MONUMENT.
- ◆ FOUND IRON PIN MONUMENT SET BY PLS 741 REFERENCE RECORD SURVEY 8781
- SECTION LINE CALCULATED FROM TRAVERSE SURVEY.
- PROPERTY LINE MARKED AND POSTED.
- [ ] DENOTES GOVERNMENT RECORD
- ( ) DENOTES BLM RETRACEMENT (1973).
- <> DENOTES RECORD SURVEY No. 8781, DATED 1981.

### CERTIFICATE OF SURVEY

I, Harold L. Center, Registration No. 1071 Registered Professional Land Surveyor, State of Oregon, hereby certify that this plat correctly represents a survey made by me or under my direction in conformance with the laws of the State of Oregon, at the request of the U.S. Forest Service.

REGISTERED  
PROFESSIONAL  
LAND SURVEYOR  
*Harold L. Center*  
Harold L. Center  
No. 1071

U.S. DEPT. OF AGRICULTURE  
**FOREST SERVICE**  
REGION 6 ROGUE RIVER NATIONAL FOREST

**DEPENDENT RESURVEY  
AND  
SECTION SUBDIVISION**  
**SECTION 32, T. 33 S., R. 1 W., W.M.**  
**JACKSON COUNTY, OREGON**

REVIEWED BY: *D. L. McLaughlin* DATE *7/1/85*  
REVIEWED BY: *M. O. O'Keefe* DATE *7/1/85*

SURVEY NARRATIVE TO COMPLY WITH  
PARAGRAPH 209.250 OREGON REVISED STATUTES

**SURVEY FOR:** Rogue River National Forest  
P. O. Box 520  
Medford, OR 97501

**LOCATION:** Section 32, Township 33 South, Range 1 West,  
Willamette Meridian, Jackson County, Oregon.

**BASIS OF BEARING:** Solar observation

**PURPOSE:** To monument corners and mark and post the boundaries between the National Forest and private lands within Section 32.

**PROCEDURE:** Prior to commencement of this survey, I performed an investigation of controlling section, quarter section, and one-sixteenth section corner points. The southwest section corner and west one-quarter corner were remonumented from original evidence in 1966 by the Bureau of Land Management. In 1973, the northwest section corner was remonumented from original evidence by the Bureau of Land Management. During this same year, the north one-quarter corner was reestablished, the west one-sixteenth corner common to Sections 29 and 32, and the north and south one-sixteenth corners common to Sections 31 and 32, were established by survey by the Bureau of Land Management. In 1960, the Jackson County Surveyor remonumented the northeast section corner from original evidence. In 1972, the Jackson County Surveyor remonumented the east one-quarter corner and southeast section corner from original evidence. The east one-sixteenth corner common to Sections 29 and 32, was established by Darrel W. Edwards, Registered Professional Land Surveyor, No. 741 Oregon, Reference Record Survey No. 8781 dated April 1, 1981.

With the required corner control identified, I began the survey at the northeast section corner (solar point) and performed a closed traverse around the perimeter of Section 32, tying each of the recovered monuments. From this data I computed search areas and searched for original evidence of the north one-quarter corner. No original evidence was found. Along the south line of Section 32, a search was made for the original blazes and topographic calls, with the intent to locate evidence of the south one-quarter corner. Blazes dating to 1905, 1945, and 1960 were found, but no original evidence was located. Unable to locate any evidence of the original one-quarter corner, I reestablished the south one-quarter corner by single proportionate measurement.

With all exterior corners found or reestablished, a closed traverse was ran along the interior lines, closing to the exterior control traverse.

At various points along the interior lines, unrecorded blazes and one unrecorded monument was found.

An encroachment of a residence on Government land was found along the north 1/2 of the north 1/2 of the east section line, Section 32. Detail "A" shows the residence in relation to the property boundary. No evidence of prior survey was found in the area of the said encroachment.

This survey was performed utilizing a Wild T-2 Theodolite and a Wild DI-4 Distance Meter. The National Forest property lines were posted with aluminum posts with national forest boundary signs attached. Trees along true line were blazed and painted with red timber marking paint.

Corners Accepted For Control

East one-sixteenth corner to Sections 29 and 32, Township 33 South, Range 1 West.

At the corner point I found a 5/8 inch diameter iron pin and two bearing trees with blazes; no scribing visible. Record Survey No. 8781 describes the following references:

A 12-inch diameter fir bears N.73°W., 1.30 feet distance, marked with blaze and no scribing.

A 6-inch diameter pine bears N.45°E., 20.20 feet distance, marked with blaze and no scribing.

One-quarter corner to Sections 29 and 32, Township 33 South, Range 1 West.

At the corner point I found a standard Bureau of Land Management brass cap monument marked:

U.S. Dept. of Interior  
Unlawful to Disturb  
T33S R1W

1/4  $\frac{S29}{S32}$

1973  
Cadastral Surveys  
Bureau of Land Management

And the following references:

A 15-inch diameter fir bears S.30°53'W., 15.56 feet distance, with a healed blaze.

A 13-inch diameter fir bears N.2°10'W., 26.26 feet distance, with scribing 1/4 S29 BT visible. This tree now dead.

New reference:

A 7-inch diameter pine bears N.21°06'E., 31.52 feet distance, scribed 1/4 S29 LS 1071 BT.

West one-sixteenth corner to Sections 29 and 32, Township 33 South, Range 1 West.

At the corner point I found a standard BLM brass cap monument marked:

U.S. Dept. of Interior  
Unlawful to Disturb

W 1/16  $\frac{S29}{S32}$

1973  
Cadastral Surveys  
Bureau of Land Management

And the following references:

A 10-inch diameter fir bears S.62°19'W., 31.47 feet distance, with a healed blaze.

A 10-inch diameter fir bears N.61°32'E., 30.70 feet distance, with a healed blaze.

Section corner to Sections 29, 30, 31 and 32, Township 33 South, Range 1 West.

At the corner point I found a standard Bureau of Land Management brass cap monument marked:

U.S. Dept. of Interior  
Unlawful to Disturb  
T33S R1W

S30	S29
S31	S32

1973  
Cadastral Surveys  
Bureau of Land Management

And the following references:

A 9-inch diameter fir bears S.08°11'E., 21.80 feet distance, with a healed blaze.

A 17-inch diameter fir bears S.37°46'W., 45.02 feet distance, with a healed blaze.

An 11-inch diameter fir bears N.58°44'W., 31.93 feet distance, with a healed blaze.

A 21-inch diameter oak bears N.51°38'W., 22.36 feet distance, with an opened blaze and decayed face.

A 10-inch diameter madrone bears N.74°05'E., 25.41 feet distance, with scribed face T33S R1W S29 ET.

North one-sixteenth corner to Sections 31 and 32, Township 33 South, Range 1 West.

At the corner point I found a standard Bureau of Land Management brass cap monument marked:

U.S. Dept. of Interior  
Unlawful to Disturb  
N 1/16

S31	S32
-----	-----

1973  
Cadastral Surveys  
Bureau of Land Management

And the following references:

An 11-inch diameter fir bears N.65°54'E., 23.13 feet distance, with a single healed blaze.

A 13-inch diameter fir bears N.54°49'W., 21.62 feet distance, with a single healed blaze.

One-quarter corner to Sections 31 and 32, Township 33 South, Range 1 West.

At the corner point I found a standard Bureau of Land Management brass cap monument marked:

And the following references:

A 14-inch diameter cedar bears N.24°31'E., 62.26 feet distance, with a healed blaze.

A 13-inch diameter fir bears S.37°16'E., 76.85 feet distance, with a healed blaze.

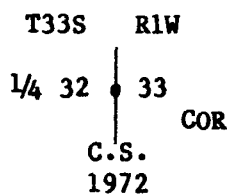
A 14-inch diameter fir stump bears S.2°03'W., 45.95 feet distance, with partial scribing visible.

A 13-inch diameter cedar bears N.64°25'W., 29.56 feet distance, with a healed blaze.

A 15-inch diameter oak bears N.13°55'W., 61.15 feet distance, with an open blaze.

One-quarter corner to Sections 32 and 33, Township 33 South, Range 1 West.

At the corner point I found a standard Jackson County Surveyor brass cap monument marked:



And the following references:

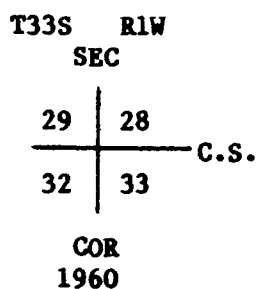
A 15-inch diameter fir bears N.82°01'W., 36.34 feet distance, with a double healed blaze.

A 7-inch diameter oak bears N.41°27'E., 47.13 feet distance, with a double healed blaze.

A 22-inch diameter oak bears S.28°46'E., 56.39 feet distance, with two open blazes; scribe BT visible.

Section corner to Sections 28, 29, 32 and 33, Township 33 South, Range 1 West.

At the corner point I found a standard Jackson County Surveyor brass cap monument marked:



And the following references:

A 6-inch diameter oak bears N.43°29'W., 29.85 feet distance, with a healed blaze.

A 31-inch diameter oak bears N.33°17'E., 27.26 feet distance, with a decayed face.

An 8-inch diameter oak bears N.88°07'E., 21.02 feet distance, with a healed blaze.

A 12-inch diameter oak (dead and down) bears S.50°20'E., 71.28 feet distance, with a double healed blaze.

U.S. Dept. of Interior  
Unlawful to Disturb  
T33S R1W

1/4  
S31 | S32  
1966  
Cadastral Surveys  
Bureau of Land Management

And the following references:

A 27-inch diameter oak bears N.84°26'E., 29.72 feet distance, with a double healed blaze.

A 15-inch diameter fir bears S.51°39'E., 43.42 feet distance, with a healed blaze.

A 16-inch diameter fir bears N.76°14'W., 39.81 feet distance, with scribing 3 1 B visible. This tree now dead.

New Reference:

An 8-inch diameter oak bears N.56°45'W., 44.10 feet distance, scribed 1/4 S31 LS 1071 BT.

South one-sixteenth corner to Sections 31 and 32, Township 33 South, Range 1 West.

At the corner point I found a standard Bureau of Land Management brass cap monument marked:

U.S. Dept. of Interior  
Unlawful to Disturb  
S 1/16  
S31 | S32  
1973  
Cadastral Survey  
Bureau of Land Management

And the following references:

An 8-inch diameter pine bears S.58°47'E., 16.66 feet distance, with a partly healed blaze.

An 18-inch diameter fir bears S.88°16'W., 61.94 feet distance, with a healed blaze.

Section corner to Sections 31 and 32, Township 33 South, Range 1 West, and Sections 5 and 6, Township 34 South, Range 1 West.

At the corner point I found a standard Bureau of Land Management brass cap monument marked:

U.S. Dept. of Interior  
Unlawful to Disturb  
T33S R1W  
S31 | S32  
S6 | S5  
T34S  
1966  
Cadastral Surveys  
Bureau of Land Management

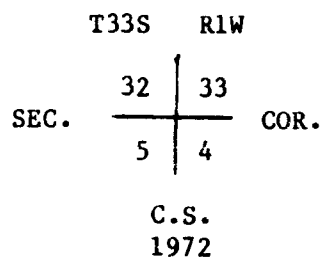
A 20-inch diameter oak (dead and down) bears S.10°05'W., 17.24 feet distance, with a decayed, chopped face.

A 7-inch diameter oak bears S.42°11'W., 42.20 feet distance, with a healed blaze.

CORNERS REESTABLISHED THIS SURVEY

Section corner to Sections 32 and 33, Township 33 South, Range 1 West, and Sections 4 and 5, Township 34 South, Range 1 West.

At the corner point I found a standard Jackson County Surveyor brass cap monument loosely set in a 4 feet by 3 feet mound of stone (which included a 9"x10"x24" stone marked with an "X"). The monument was marked:



And the following references:

A 22-inch diameter oak bears N.38°39'W., 86.55 feet distance, with fragmentary scribing visible.

A 10-inch diameter fir bears N.26°24'E., 62.75 feet distance, with scribing CS BT visible. This tree now dead and down.

A sawed pine stump bears N.46°53'E., 70.04 feet distance, with scribing BT plainly visible.

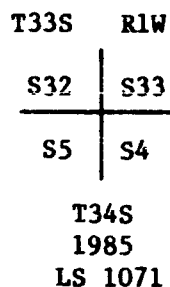
A 26-inch diameter pine bears S.36°39'E., 97.52 feet distance, with scribing T34S4 visible.

An 11-inch diameter fir bears S.35°47'W., 71.11 feet distance, with scribing CS BT visible. This tree is now dead.

A 10-inch oak bears S.74°13'W., 31.74 feet distance, with a partly healed blaze and rotted interior.

I remonumented as follows:

I removed the County Surveyor's iron post monument and at the corner point I set a 2 1/2 inch diameter iron post with a 2 1/2 inch diameter brass cap cemented in a 4 foot by 4 foot mound of stone. I place the original stone on west side of monument, and mark the brass cap:



And the following new references:

An 18-inch diameter fir bears S.42°16'W., 140.87 feet distance, scribed T34S R1W S5 LS1071 BT.

A 13-inch diameter fir bears N.60°53'E., 124.11 feet distance, scribed T33S R1W S33 LS1071 BT.





One-quarter corner to Section 32, Township 33 South, Range 1 West, and Section 5, Township 34 South, Range 1 West.

At the corner point I set a 2½ inch brass disk, cemented flush in bedrock and marked:

T33S R1W  
1/4  $\frac{S32}{S5}$   
T34S  
1985  
LS 1071

And the following references:

A 13-inch diameter pine bears S.85°03'W., 69.90 feet distance, scribed 1/4 S5 LS1071 BT.

A rock, size indeterminable, bears N.21°41'W., 36.60 feet distance, with Bx0 chiseled and a P.K. nail in center of X.

CORNERS ESTABLISHED THIS SURVEY

South one-sixteenth corner to Sections 32 and 33, Township 33 South, Range 1 West.

At the corner point I set a 2½ inch diameter iron post with a 2½ inch brass cap marked:

T33S R 1W  
S 1/16  
S32 • S33  
1985  
LS 1071

And the following references:

A 5-inch diameter fir bears S.86°00'E., 6.20 feet distance, scribed X BT.

A 7-inch diameter fir bears S.51°45'W., 19.20 feet distance, scribed S 1/16 S32 LS1071 BT.

Center-south one-sixteenth corner to Section 32, Township 33 South, Range 1 West.

At the corner point I set a 2½ inch diameter iron post with a 2½ inch diameter brass cap marked:

T 33S R1W  
C  
S 1/16 • S32  
C  
1985  
LS 1071

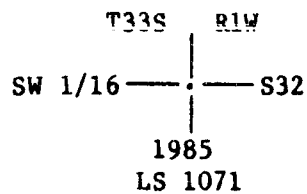
And the following references:

A 6-inch diameter fir bears S.65°59'W., 15.80 feet distance, scribed X BT.

A 9-inch diameter fir bears S.67°54'E., 20.10 feet distance, scribed CS 1/16 S32 LS1071 BT.

Southwest one-sixteenth corner to Section 32, Township 33 South, Range 1 West.

At the corner point I set a 2 1/2 inch diameter iron post with a 2 1/2 inch diameter brass cap marked:



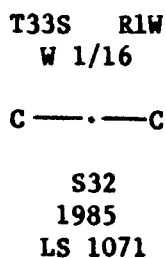
And the following references:

A 6-inch diameter pine bears S.33°05'E., 13.76 feet distance, scribed X BT.

An 8-inch diameter fir bears S.30°17'W., 24.55 feet distance, scribed SW 1/16 S32 LS1071 BT.

Center-west one-sixteenth corner Section 32, Township 33 South, Range 1 West.

At the corner point I set a 2 1/2 inch diameter iron post with a 2 1/2 inch diameter brass cap marked:



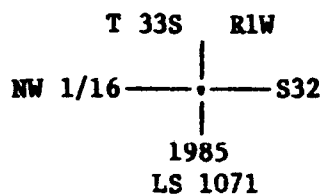
And the following references:

A 14-inch diameter fir bears S.73°54'W., 24.10 feet distance, scribed CW 1/16 S32 LS1071 BT.

An 11-inch diameter fir bears N.55°49'W., 25.80 feet distance, scribed X BT.

Northwest one-sixteenth corner to Section 32, Township 33 South, Range 1 West.

At the corner point I set a 2 1/2 inch diameter iron post with a 2 1/2 inch diameter brass cap marked:



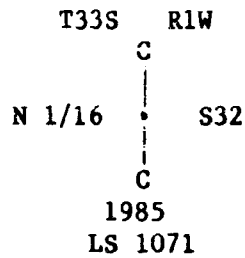
And the following references:

A 6-inch diameter fir bears N.63°08'W., 11.25 feet distance, scribed X BT.

An 11-inch diameter cedar bears N.16°35'E., 19.50 feet distance, scribed NW 1/16 S32 LS1071 BT.

Center-north one-sixteenth corner to Section 32, Township 33 South, Range 1 West.

At the corner point I set a 2 1/2 inch diameter iron post with a 2 1/2 inch diameter brass cap marked:



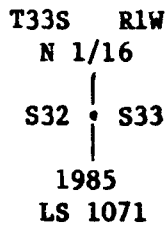
And the following references:

An 11-inch diameter pine bears N.24°25'E., 10.03 feet distance, scribed CN 1/16 S32 LS1071 BT.

A 14-inch diameter fir bears S.76°56'W., 12.53 feet distance, scribed CN 1/16 S32 LS 1071 BT.

North one-sixteenth corner to Sections 32 and 33, Township 33 South, Range 1 West.

At the corner point I set a 2 1/2 inch diameter iron post with a 2 1/2 inch diameter brass cap marked:



And the following references:

A 6-inch diameter fir bears N.76°20'W., 24.53 feet distance, scribed N 1/16 S32 LS1071 BT.

A 9-inch diameter fir bears N.76°45'E., 29.76 feet distance, scribed N 1/16 S33 LS1071 BT.

June 20, 1985

HAROLD L. CENTER  
Registered Professional Land Surveyor  
Oregon Certificate No. 1071

