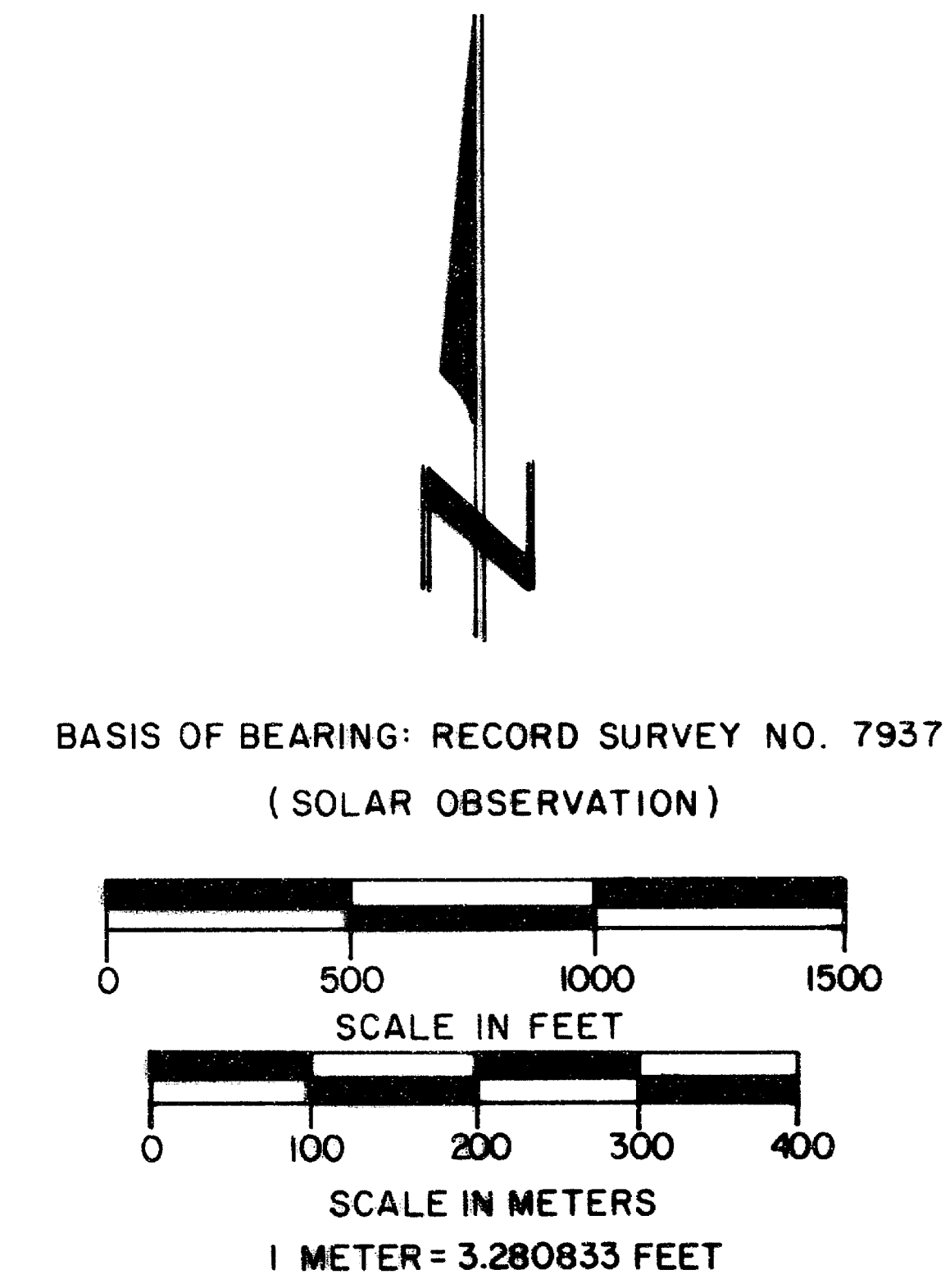
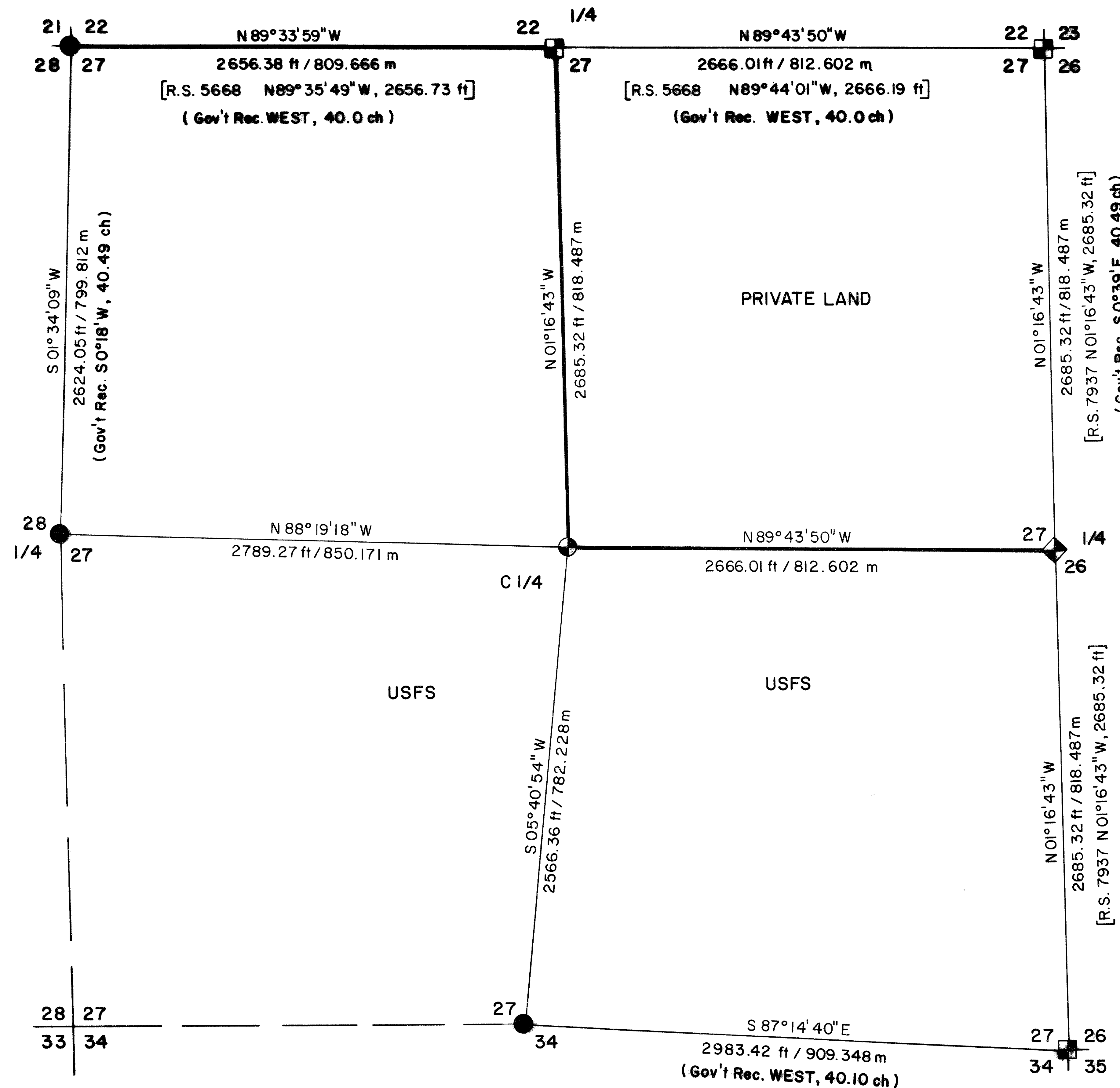


MAP OF SURVEY
 FOR
 ROGUE RIVER NATIONAL FOREST
 P.O. BOX 520
 MEDFORD, OREGON
 APRIL 15, 1985



LEGEND

- FOUND STANDARD BLM BRASS CAP MONUMENT
- FOUND MONUMENT-ESTABLISHED BY E.L. SWAIN P.L.S. No. 759 (ref. R.S. 5668 & 5300)
- ◆ FOUND MONUMENT-ESTABLISHED BY H.L. CENTER P.L.S. 1071 (ref. R.S. 7937)
- SET 2 1/2" dia. X 30" lg. GALVANIZED IRON POST BRASS CAP MONUMENT
- PROPERTY LINE MARKED AND POSTED
- SECTION LINE CALCULATED FROM TRAVERSE SURVEY

HISTORY OF SURVEYS

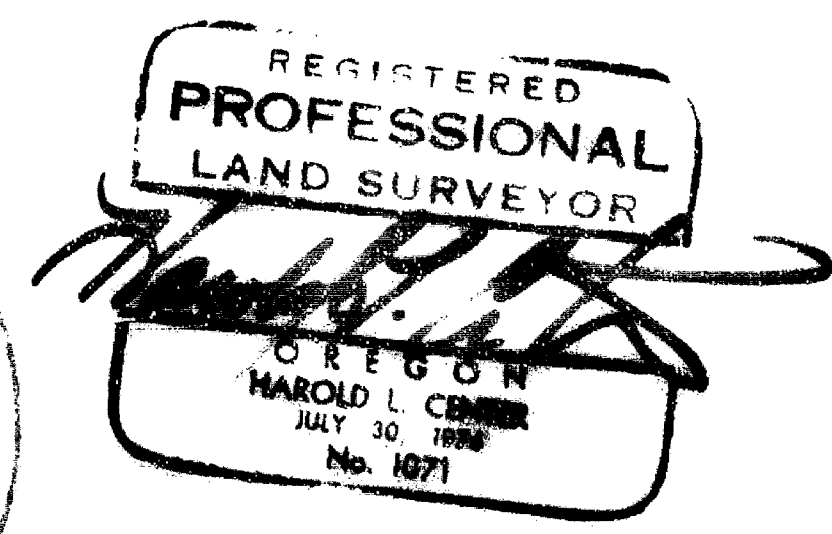
The Northeast corner of section 27 was established by Deputy Surveyors Ives and Hyde under Contract No. 39 dated January 4, 1854. The East and North lines were established by Deputy Surveyors Turner and Howard under Contract No. 142 dated September 9, 1870. The South and West lines were established by Deputy Surveyor O. Fletcher under contract No. 663 dated May 21, 1896. E. L. Swain, Registered Professional Land Surveyor No. 759, re-monumented from original corner evidence the Section Corner of Sections 26, 27, 34 and 35 (ref. R.S. 5300) and the one-quarter corner to Sections 22 and 27 (ref. R.S. 5668). Surveyor Swain also re-established by proportional measurement the Section Corner to Sections 22, 23, 26 and 27 (ref. R.S. 5668). H. L. Center, Registered Professional Land Surveyor No. 1071, re-established the one-quarter corner to Sections 26 and 27 by proportional measurement (ref. R.S. 7937). No other surveys of record were noted.

SPECIAL NOTE: The Northeast one-quarter of Section 27 was established by protraction from the Turner and Howard plat of 1870. Patents to the Northeast one-quarter of Section 27 were issued based on the Turner and Howard plat. In order to protect the patent, I established the center one-quarter corner at the point of intersection of lines parallel to the East half of the North line and North half of the East line of Section 27.

CERTIFICATE OF SURVEY

I, Harold L. Center, Registration No. 1071 Registered Professional Land Surveyor, State of Oregon, hereby certify that this plat correctly represents a survey made by me or under my direction in conformance with the laws of the State of Oregon, at the request of the U.S. Forest Service.

*** RECEIVED ***
 Date 5/29/85 by SK
 This survey consists of:
1 sheet(s) map
4 page(s) narrative
 JACKSON COUNTY SURVEYOR



U.S. DEPARTMENT OF AGRICULTURE FOREST SERVICE REGION 6 ROGUE RIVER NATIONAL FOREST	
DEPENDENT RESURVEY AND SECTION SUBDIVISION SECTION 27, T. 39S., R. 1E., W.M. JACKSON COUNTY, OREGON	
REVIEWED BY <u>D. McNeill</u>	DATE <u>5/13/85</u>
REVIEWED BY <u>W. O'Leary</u>	DATE <u>5/13/85</u>

A 16-inch diameter pine bears N87°45'E, 47.93 feet distance with scribe visible.

One-quarter corner to Sections 27 and 34, Township 39 South, Range 1 East.

At the corner point I found a standard Bureau of Land Management brass cap monument marked:

U.S. Dept. of Interior
Unlawful to Disturb
T39S R1E

1/4 $\frac{S27}{S34}$

1967
Bureau of Land Management
Cadastral Surveys

And the following references:

A 30-inch diameter fir bears N01°38'W, 35.18 feet distance with healed blaze.

A 9-inch diameter fir bears S36°11'E, 25.97 feet distance with healed blaze.

An 11-inch diameter pine snag bears S18°48'E, 13.20 feet distance with scribe visible.

Corners Established This Survey

Center one-quarter corner Section 27, Township 39 South, Range 1 East.

At the corner point I set a 2 1/2 inch diameter galvanized iron post with a 2 1/2 inch diameter brass cap marked:

T39S R1E
C1/4 — | — S27
|
LS1071
1985

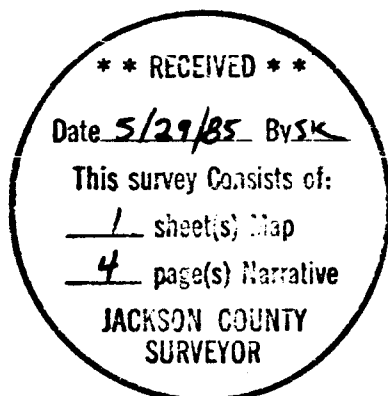
And the following references:

A 16-inch diameter fir bears S43°59'E, 19.64 feet distance and scribed C1/4S27LS1071 BT.

An 8-inch diameter fir bears S72°23'W, 24.11 feet distance and scribe C1/4S27LS1071 BT.

April 15, 1985

HAROLD L. CENTER
Registered Professional Land Surveyor
Oregon Certificate No. 1071



At the corner point I found a 2 1/2 inch diameter iron post monument with a 2 1/2 inch diameter brass cap marked:

T39S	R1E
	1/4
S27	S26
1979	
LS1071	

And the following references:

A 25-inch diameter fir bears S74°03'W, 26.95 feet distance with scribe visible.

A 3/4-inch diameter iron post bears N57°27'W, 24.33 feet distance.

A 26-inch diameter pine bears N38°53'E, 105.00 feet distance with scribe visible.

Section corner to Sections 22, 23, 26 and 27, Township 39 South, Range 1 East.

At the corner point I found a 2 1/2 inch diameter brass disk set flush with the pavement of Tolman Creek Road marked:

Swain Surveying	
T39S	R1E
S22	S23
S27	S26
RLS759 1974	

And the following references:

An 11-inch diameter pine bears N28°19'W, 60.50 feet distance with healed blaze.

A 12-inch diameter pine bears N29°46'E, 40.00 feet distance with scribe visible.

A 19-inch diameter fir bears S28°12'E, 78.10 feet distance with healed blaze.

A 15-inch diameter fir bears S16°08'E, 21.80 feet distance with healed blaze.

One-quarter corner to Sections 22 and 27, Township 39 South, Range 1 East.

At the corner point I found a 2 1/2 inch diameter iron post monument with a 2 1/2 inch diameter brass cap marked:

Swain Surveying	
T39S	R1E
1/4	S22
	S27
RLS 759 1974	

And the following references:

A 12-inch diameter fir bears S37°47'W, 2.50 feet distance with healed blaze.

SURVEY NARRATIVE TO COMPLY WITH
PARAGRAPH 209.250 OREGON REVISED STATUTES

SURVEY FOR: Rogue River National Forest
P. O. Box 520
Medford, OR 97501

LOCATION: Section 27, Township 39 South, Range 1 East,
Willamette Meridian, Jackson County, Oregon.

BASIS OF BEARING: Record Survey No. 7937 (solar observation)

PURPOSE: To monument property corners and mark and post property boundary lines separating National Forest and private lands.

PROCEDURE: Prior to commencement of this project, a search of controlling corners was made. The northwest section corner and the west and south one-quarter corners had been remonumented from original corner evidence by the Bureau of Land Management, Division of Cadastral Surveys in 1967. The north one-quarter corner had been remonumented from original corner evidence by Everett L. Swain, Registered Professional Land Surveyor No. 759 (reference Record of Survey No. 5668). The northeast section corner was reestablished from survey by Surveyor Swain (reference Record Survey No. 5668).

The east one-quarter corner was reestablished from survey by Harold L. Center, Registered Professional Land Surveyor No. 1071 (reference Record Survey No. 7937). With the required corner control verified, I began a traverse at the northeast section corner tying to my previously established control for survey of the east line of Section 27. I proceeded to traverse counter clockwise around Section 27 tying the required controlling corners, closing the traverse to my previously established control. The northwest quarter of Section 27 was established by protraction from the Turner and Howard plat of 1870. Although patents to the northeast one quarter of Section 27 were not finally approved until after 1920, the patents were issued based on the Turner and Howard plat. In order to protect the patents I established the center one quarter corner of Section 27 at a point utilizing a east-west center line held parallel to the east half of the north line and a north-south center line held parallel to the north half of the east line of Section 27. Subdivisional lines were computed and a random line traverse ran along the interior sectional subdivisional lines. Offsets were computed and true lines blazed and posted. Lines were posted utilizing metal post with National Forest boundary signs attached, and trees along the line were blazed. Blazes painted with red timber marking paint.

Surveys were performed utilizing a Wild T-16 Theodolite and Wild DI-4 Electronic Distance Meter.

Corners Accepted For Control

One-quarter corner to Sections 26 and 27, Township 39 South, Range 1 East.

An 11-inch diameter fir bears N21°26'E, 38.90 feet distance with scribe visible.

A 29-inch diameter cedar stump bears S44°00'E, 6.80 feet distance.

Section corner to Sections 21, 22, 27 and 28, Township 39 South, Range 1 East.

At the corner point I found a standard Bureau of Land Management brass cap monument marked:

U.S. Dept. of Interior
Unlawful to Disturb
T39S R1E

S21	S22
S28	S27

1967
Bureau of Land Management
Cadastral Surveys

And the following references:

A 12-inch diameter fir bears S57°40'E, 24.09 feet distance with healed blaze.

A 17-inch diameter fir bears S22°46'W, 9.70 feet distance with healed blaze.

A 12-inch diameter fir bears N31°13'W, 42.54 feet distance with healed blaze.

A 33-inch diameter pine bears N13°29'W, 38.99 feet distance with healed blaze.

A 14-inch diameter pine stump bears N07°18'E, 25.76 feet distance.

An 11-inch diameter fir bears N21°20'E, 32.39 feet distance with healed blaze.

One-quarter corner to Sections 27 and 28, Township 39 South, Range 1 East.

At the corner point I found a standard Bureau of Land Management brass cap monument marked:

U.S. Dept. of Interior
Unlawful to Disturb
T39S R1E

1/4	
S28	S27

1967
Bureau of Land Management
Cadastral Surveys

And the following references:

A 12-inch diameter fir bears N59°10'W, 3.30 feet distance with healed blaze.

A 25-inch diameter pine bears N20°34'W, 16.90 feet distance with scribe visible.

A 50-inch diameter pine stump bears N79°26'E, 79.18 feet distance with healed blaze.