

RECEIVED
 Date: 4/11/85 By: SK
 This survey consists of:
 2 sheet(s) Map
 4 page(s) Narrative
 JACKSON COUNTY SURVEYOR

REGISTERED PROFESSIONAL LAND SURVEYOR
 Jay R. Moffit
 GREGORY
 JULY 20, 1978
 LLOYD L. MOFFIT
 944

AT THE EAST ONE-SIXTEENTH CORNER COMMON TO SECTIONS 30 AND 31 I SET A 5/8 INCH IRON PIN WITH A PLASTIC CAP STAMPED, MOFFIT PLS 944, FROM WHICH;

A 5/8 INCH IRON PIN R.P. IN A NORTH-SOUTH FENCE BEARS N21°E 23.32 FEET.

A 5/8 INCH IRON PIN R.P. IN A NORTH-SOUTH FENCE BEARS S81°E 9.39 FEET.

AT THE ONE-QUARTER CORNER COMMON TO SECTIONS 29 AND 32 I SET A 5/8 INCH IRON PIN WITH A PLASTIC CAP STAMPED, MOFFIT PLS 944, FROM WHICH;

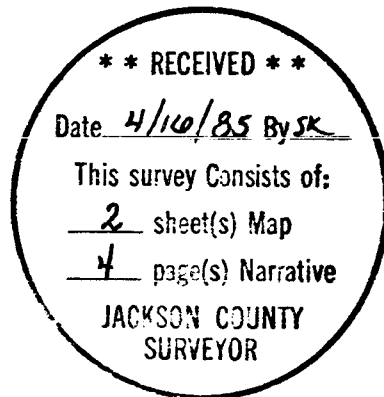
A NEW B.T., A 10" MADRONE, BEARS S72°W 26.20 FEET SCRIBED 1/4 S32 BT.

A NEW B.T., A 16" MADRONE, BEARS N29°W 53.49 FEET SCRIBED 1/4 S29 BT.

IT SHOULD BE NOTED THAT THE ORIGINAL STONE AT THE SECTION CORNER COMMON TO SECTION 25, 30, 36 AND 31 HAS BEEN REPLACED WITH A 5/8 INCH IRON PIN WITH A PLASTIC CAP STAMPED, MOFFIT PLS 944. THE BEARING TREES ARE STILL IN GOOD SHAPE.

ALL TRAVERSES WERE RUN WITH THE H.P. 3800 OR THE GTS 2 TOPCON. ALL TRAVERSES HAD CLOSURES OF BETTER THAN 1" IN 50,000'.

LOYD R. MOFFIT
FRIAR-MOFFIT & ASSOC.
717 W. 10TH ST.
MEDFORD, OR 97530



AT THE ONE-QUARTER CORNER COMMON TO SECTIONS 20 AND 21 WE FOUND A HOLLOW SHELL OF AN ORIGINAL BEARING TREE IN THE SOUTHWEST QUADRANT SHOWING AXE MARKS. IN THE NORTHEAST QUADRANT WE FOUND THE ORIGINAL BEARING TREE LAYING ON THE GROUND WITH OLD AXE MARKS. WE SET A COUNTY BRONZE CAP ON A 1 INCH IRON PIPE FROM WHICH;

THE REMAINS OF ORIG. OAK B.T. BEARS N28°52'E
122.10 FEET.

A NEW B.T., A 10" WHITE OAK, BEARS N84°18'E
22.45 FEET SCRIBED CS BT.

A NEW B.T., A 8" WHITE OAK, BEARS S54°44'W
36.07 FEET SCRIBED CS BT.

THE SHELL OF ORIG. OAK B.T. BEARS S86°59'W
39.60 FEET.

AT THE ONE-QUARTER CORNER COMMON TO SECTIONS 19 AND 20 I SET A 5/8 INCH IRON PIN WITH A PLASTIC CAP STAMPED, MOFFIT PLS 944, FROM WHICH;

A NEW B.T., A 8" WHITE OAK, BEARS N33°E 69.22
FEET SCRIBED 1/4 S20 BT.

A NEW B.T., A 10" WHITE OAK, BEARS N64°W 71.90
FEET SCRIBED 1/4 S19 BT.

AT THE SOUTH ONE-SIXTEENTH CORNER COMMON TO SECTIONS 19 AND 20 I SET A 5/8 INCH IRON PIN WITH A PLASTIC CAP STAMPED, MOFFIT PLS 944, FROM WHICH;

A NEW B.T., A 8" WHITE OAK, BEARS S48°E 62.77
FEET SCRIBED S1/16 S20 BT.

A NEW B.T., A 8" WHITE OAK, BEARS S74°W 9.47
FEET SCRIBED S1/16 S19 BT.

AT THE CENTER SOUTH ONE-SIXTEENTH CORNER OF SECTION 20 I SET A 5/8 INCH IRON PIN WITH A PLASTIC CAP STAMPED, MOFFIT PLS 944, FROM WHICH;

A NEW B.T., A 8" WHITE OAK, BEARS S14°W 37.10
FEET SCRIBED CS 1/16 S20 BT.

A NEW B.T., A 11" MADRONE, BEARS N81°W 26.73
FEET SCRIBED CS 1/16 S20 BT.

AT THE SECTION CORNER COMMON TO SECTIONS 19, 20, 29 AND 30 I SET A 5/8 INCH IRON PIN WITH A PLASTIC CAP STAMPED, MOFFIT PLS 944, FROM WHICH;

A NEW B.T., A 8" WHITE OAK, BEARS N27°E 34.36
FEET SCRIBED T35S R1E S20 BT.

A NEW B.T., A 6" WHITE OAK, BEARS S44°E 39.64
FEET SCRIBED T35 R1E S29 BT.

A NEW B.T., A 7" WHITE OAK, BEARS S50°W 27.60
FEET SCRIBED T35 R1E S30 BT.

A NEW B.T., A 8" WHITE OAK, BEARS N59°W 33.53
FEET SCRIBED T35 R1E S19 BT.

AT THE CENTER EAST ONE-SIXTEENTH CORNER OF SECTION 30 I SET A 5/8 INCH IRON PIN WITH A PLASTIC CAP STAMPED, MOFFIT PLS 944, FROM WHICH;

A NEW B.T., A 8" WHITE OAK, BEARS S76°E
100.40 FEET SCRIBED CE 1/16 S30 BT.

A NEW B.T., A 10" WHITE OAK, BEARS S56°W
105.25 FEET SCRIBED CE 1/16 S30 BT.

AT THE ONE-QUARTER CORNER COMMON TO SECTIONS 29 AND 30 I SET A 5/8 INCH IRON PIN WITH A PLASTIC CAP STAMPED, MOFFIT PLS 944, FROM WHICH;

A NEW B.T., A 6" WHITE OAK, BEARS S16°E 27.13
FEET SCRIBED 1/4 S29 BT.

A NEW B.T., A 8" WHITE OAK, BEARS S85°W 96.15
FEET SCRIBED 1/4 S30 BT.

AT THE ONE-QUARTER CORNER COMMON TO SECTIONS 24 AND 25 I SET A 5/8 INCH IRON PIN WITH A PLASTIC CAP STAMPED, MOFFIT PLS 944, FROM WHICH;

A NEW B.T., A 7" WHITE OAK, BEARS N62°W 5.46 FEET SCRIBED 1/4 S24 BT.
A NEW B.T., A 6" WHITE OAK, BEARS S40°W 14.98 FEET SCRIBED 1/4 S25 BT.

AT THE ONE-QUARTER CORNER COMMON TO SECTIONS 25 AND 26 I SET A 5/8 INCH IRON PIN WITH A PLASTIC CAP STAMPED, MOFFIT PLS 944, FROM WHICH;

A 5/8 INCH IRON PIN R.P. IN A NORTH-SOUTH FENCE BEARS N89°E 7.05 FEET.
A 5/8 INCH IRON PIN R.P. IN AN EAST-WEST FENCE BEARS S06°W 27.99 FEET.
AN UNRECORDED 3/4 INCH IRON PIPE BEARS S07°E 28.15 FEET.

AT THE SECTION CORNER COMMON TO SECTIONS 25, 26, 35 AND 36 I SET A 5/8 INCH IRON PIN WITH A PLASTIC CAP STAMPED, MOFFIT PLS 944, FROM WHICH;

A 5/8 INCH IRON PIN R.P. IN A NORTH-SOUTH FENCE BEARS N02°E 67.91 FEET.
A "X" AT NORTHEAST CORNER CONC. BRIDGE ABUTMENT BEARS S45°W 5.20 FEET.

AT THE ONE-QUARTER CORNER COMMON TO SECTIONS 25 AND 36 I SET A 5/8 INCH IRON PIN WITH A PLASTIC CAP STAMPED, MOFFIT PLS 944, FROM WHICH;

A 5/8 INCH IRON PIN SET DURING SURVEY NO. 2902 BEARS N75°E 4.71 FEET.
A 5/8 INCH IRON PIN R.P. IN A NORTH-SOUTH FENCE BEARS S12°E 23.30 FEET.

TOWNSHIP 35 SOUTH, RANGE 1 EAST, WILLAMETTE MERIDIAN. A SEARCH WAS MADE FOR THE ONE-QUARTER CORNER COMMON TO SECTIONS 19 AND 20; THE SECTION CORNER COMMON TO SECTIONS 19, 20, 29 AND 30; AND THE ONE-QUARTER CORNER COMMON TO SECTIONS 29 AND 30 WITH A MEMBER OF THE JACKSON COUNTY SURVEYORS OFFICE (RON FROST) BUT NO EVIDENCE COULD BE FOUND.

THE SECTION CORNER COMMON TO SECTIONS 17, 18, 19 AND 20; THE ONE-QUARTER CORNER COMMON TO SECTIONS 19 AND 30; THE ONE-QUARTER CORNER COMMON TO SECTIONS 20 AND 29; AND THE SECTION CORNER COMMON TO SECTIONS 29, 30, 31 AND 32 WERE USED FOR DOUBLE PROPORTIONING THE LOCATION OF THE MISSING SECTION CORNER COMMON TO SECTIONS 19, 20, 29 AND 30.

AT THE ONE-QUARTER CORNER COMMON TO SECTIONS 17 AND 20 WE FOUND OLD AXE MARKS IN A 20 INCH WHITE OAK (O.B.T.). WE SET A COUNTY BRONZE CAP ON A 1 INCH IRON PIPE SOUTH 29.04 FEET (RECORD) FROM SAID OAK. THIS POSITION FITS WITHIN A FEW FEET OF THE ONE-QUARTER LOCATION ESTABLISHED DURING AN OLD SURVEY OF THE CLARK AND MARSH HOMESTEADS WHICH I FOUND IN THE OLD SURVEY BOOKS AT THE COUNTY SURVEYORS OFFICE. FROM SAID MONUMENT;

A NEW B.T., A 8" WHITE OAK, BEARS N52°40'E 84.45 FEET SCRIBED CS BT.
A NEW B.T., A 10" WHITE OAK, BEARS S22°33'W 24.85 FEET SCRIBED CS BT.

SURVEY NO. 10239

SURVEY NARRATIVE TO COMPLY WITH O.R.S. 209.250

SURVEY FOR: GEORGES ST. LAURENT
C/O MINDY CAUVIN
1322 E. MCANDREWS RD.
MEDFORD, OR 97504

LOCATION: A PORTION OF SECTION 25, TOWNSHIP 35 SOUTH,
RANGE 1 WEST AND SECTIONS 20, 29, 30 AND
31, TOWNSHIP 35 SOUTH, RANGE 1 EAST,
WILLAMETTE MERIDIAN, JACKSON COUNTY, OREGON.

PURPOSE: TO SURVEY AND MONUMENT THE BOUNDRIES OF THE
CLIENT'S RANCH.

PROCEDURE: TOWNSHIP 35 SOUTH, RANGE 1 WEST, WILLAMETTE
MERIDIAN. A SEARCH WAS MADE FOR THE ONE-
QUARTER CORNER COMMON TO SECTIONS 23 AND 24;
THE NORTH ONE-QUARTER, THE NORTHWEST CORNER,
THE WEST ONE-QUARTER CORNER, THE SOUTHWEST
CORNER AND THE SOUTH ONE-QUARTER CORNER OF
SECTION 25; THE ONE-QUARTER CORNER COMMON TO
SECTIONS 26 AND 35; AND THE ONE-QUARTER CORNER
COMMON TO SECTIONS 35 AND 36, NOTHING COULD BE
FOUND.

THEREFORE I USED THE SECTION CORNER COMMON
TO SECTIONS 13, 14, 23 AND 24; THE ONE-QUARTER
CORNER COMMON TO SECTIONS 23 AND 26; THE SECTION
CORNER COMMON TO SECTIONS 26, 27, 34 AND 35;
THE SECTION CORNER COMMON TO SECTIONS 35, 36,
1 AND 2; THE SECTION CORNER COMMON TO SECTIONS
25, 30, 31 AND 36; AND THE SECTION CORNER
COMMON TO SECTIONS 24, 19, 25 AND 30 TO DOUBLE
PROPORTION THE LOCATION OF THE MISSING SECTION
CORNERS REQUIRED FOR THIS SURVEY.

AT THE ONE-QUARTER CORNER COMMON TO SECTIONS
23 AND 24 I FOUND A 5/8 INCH IRON PIN SET DURING
SURVEY NO. 3760 TO BEAR NORTH 39°14" WEST 7.2
FEET FROM THE PROPORTIONED POSITION OF THE ONE-
QUARTER CORNER. I ALSO FOUND A 36 INCH PINE WITH
RECENT AXE WORK IN THE NORTHWEST QUADRANT AND
THE REMAINS OF A PINE IN THE SOUTHEAST QUADRANT.
NEITHER PINE WAS CLOSE TO FITTING THE PROPORTIONED
LOCATION.

AT THE ONE-QUARTER CORNER COMMON TO SECTIONS
23 AND 26 I FOUND A 1/2 INCH IRON PIPE IN A VERY
OLD MOUND OF ROCK. THE 1/2 INCH PIPE WAS REPLACED
WITH A 5/8 INCH IRON PIN WITH A PLASTIC CAP
STAMPED, MOFFIT PLS 944, FROM WHICH;

A NEW B.T., A 22" ASH, BEARS S37°W 195.08
FEET SCRIBED 1/4 S26 BT.

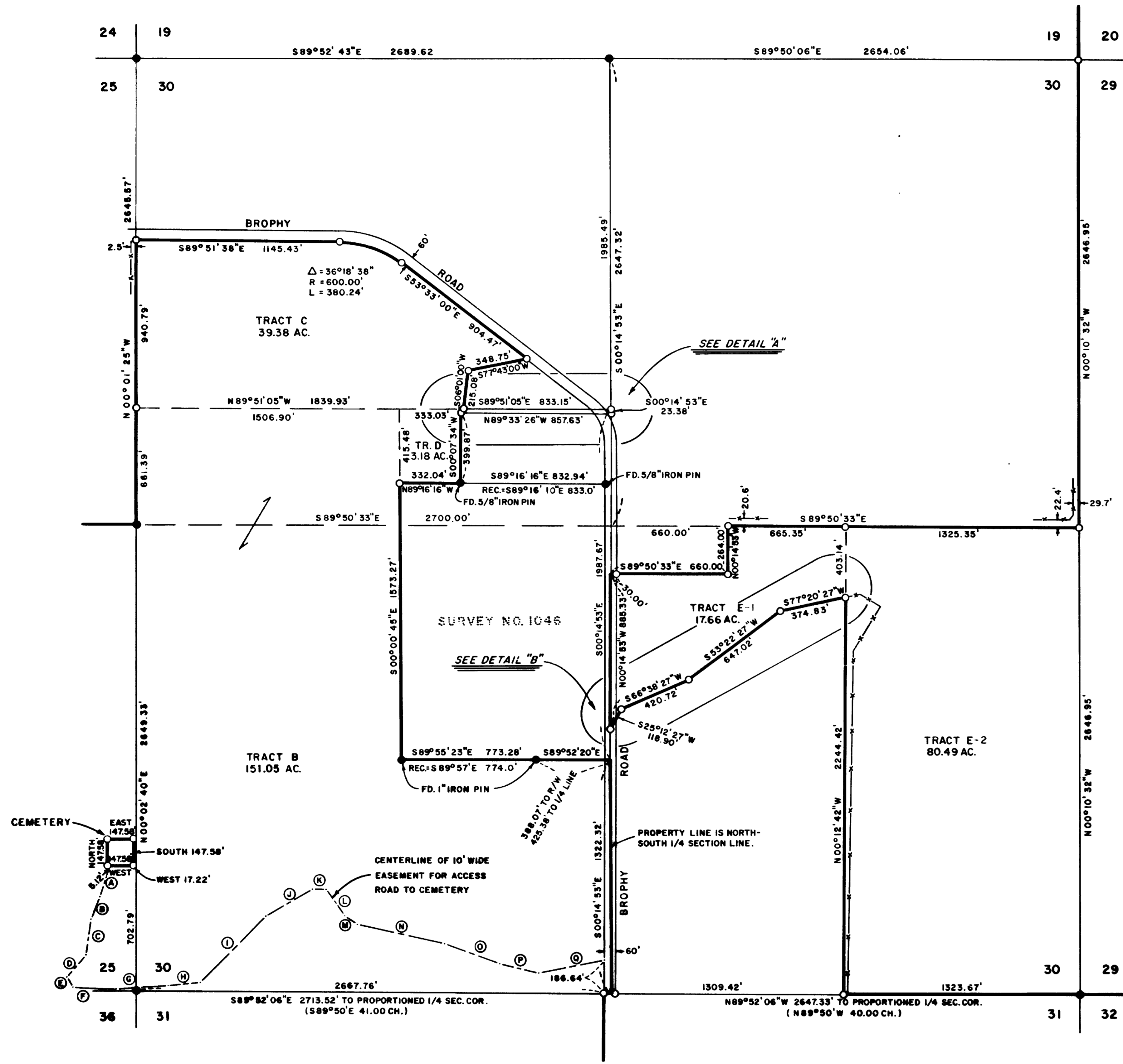
A NEW B.T., A 10" WHITE OAK, BEARS N36°W
390.24 FEET SCRIBED 1/4 S23 BT.

AT THE SECTION CORNER COMMON TO 23, 24, 25
AND 26 I SET A 5/8 INCH IRON PIN WITH A PLASTIC
CAP STAMPED, MOFFIT PLS 944, FROM WHICH;

A "X" ON A CONCRETE IRRIG. STRUCTURE BEARS
N56°W 14.26 FEET.

A 5/8 INCH IRON PIN R.P. IN THE EAST-WEST
FENCE BEARS N60°E 18.34 FEET.

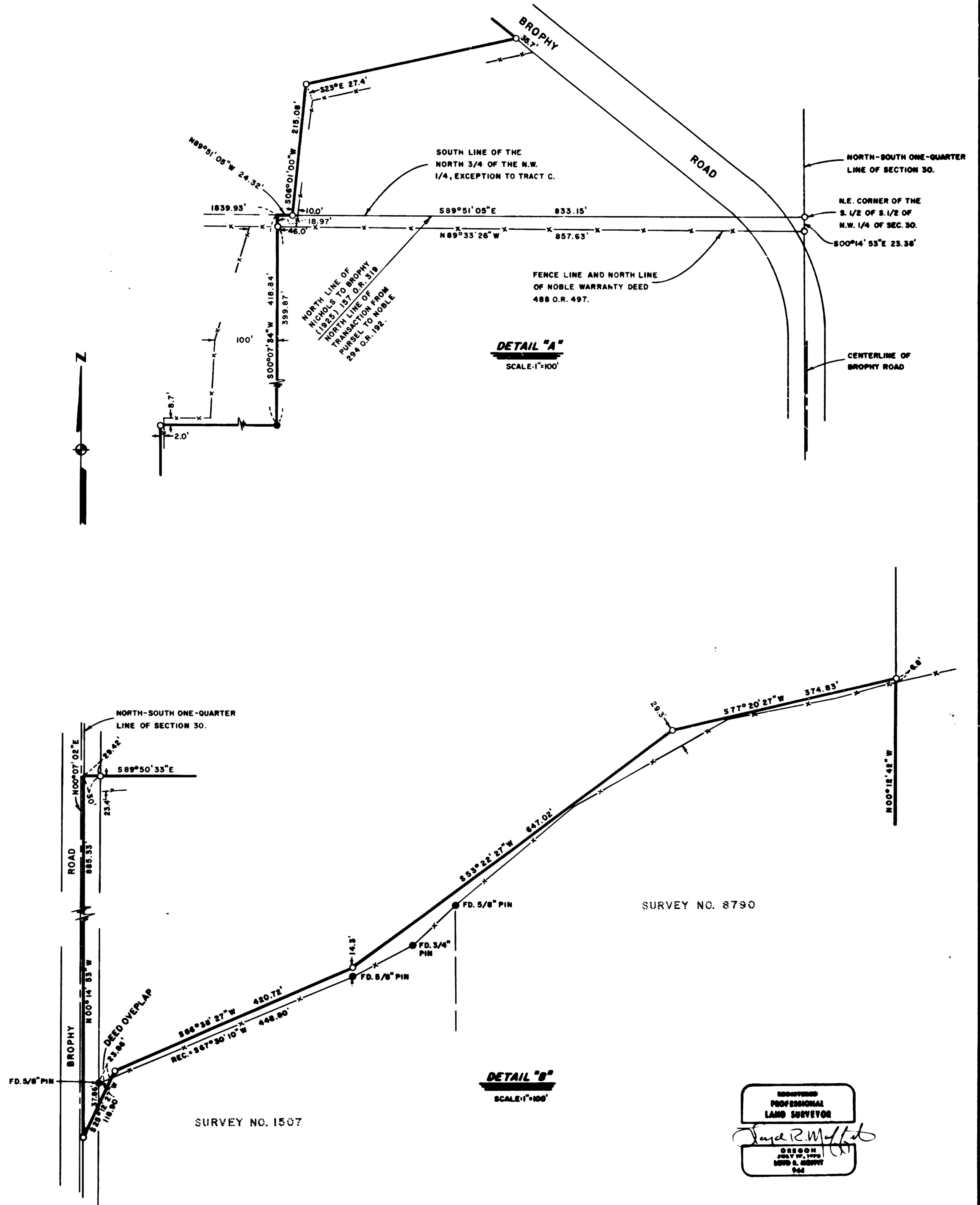
TL 500 351 W 25
300 351 E 31
TL 300, 400, 500, 1200, 1300, 135-1E 30
TL 5200 T 35-1E 20
TL 9600 T 35-1E 29



CENTERLINE OF CEMETERY ACCESS ROAD

COURSE	BEARING	DISTANCE
A	S 17° 44' 29" W	183.88'
B	S 29° 41' 24" W	134.11'
C	S 09° 30' 15" W	197.17'
D	S 36° 51' 19" W	165.77'
E	S 23° 22' 16" E	67.78'
F	S 89° 04' 48" E	243.56'
G	N 86° 08' 30" E	294.76'
H	N 84° 15' 58" E	183.31'
I	N 44° 05' 31" E	531.08'
J	N 51° 07' 48" E	301.78'
K	S 88° 53' 34" E	75.81'
L	S 38° 08' 22" E	180.42'
M	S 84° 24' 57" E	85.71'
N	S 77° 11' 00" E	518.88'
O	S 71° 52' 32" E	347.00'
P	S 79° 07' 00" E	218.73'
Q	N 79° 21' 20" E	581.90'

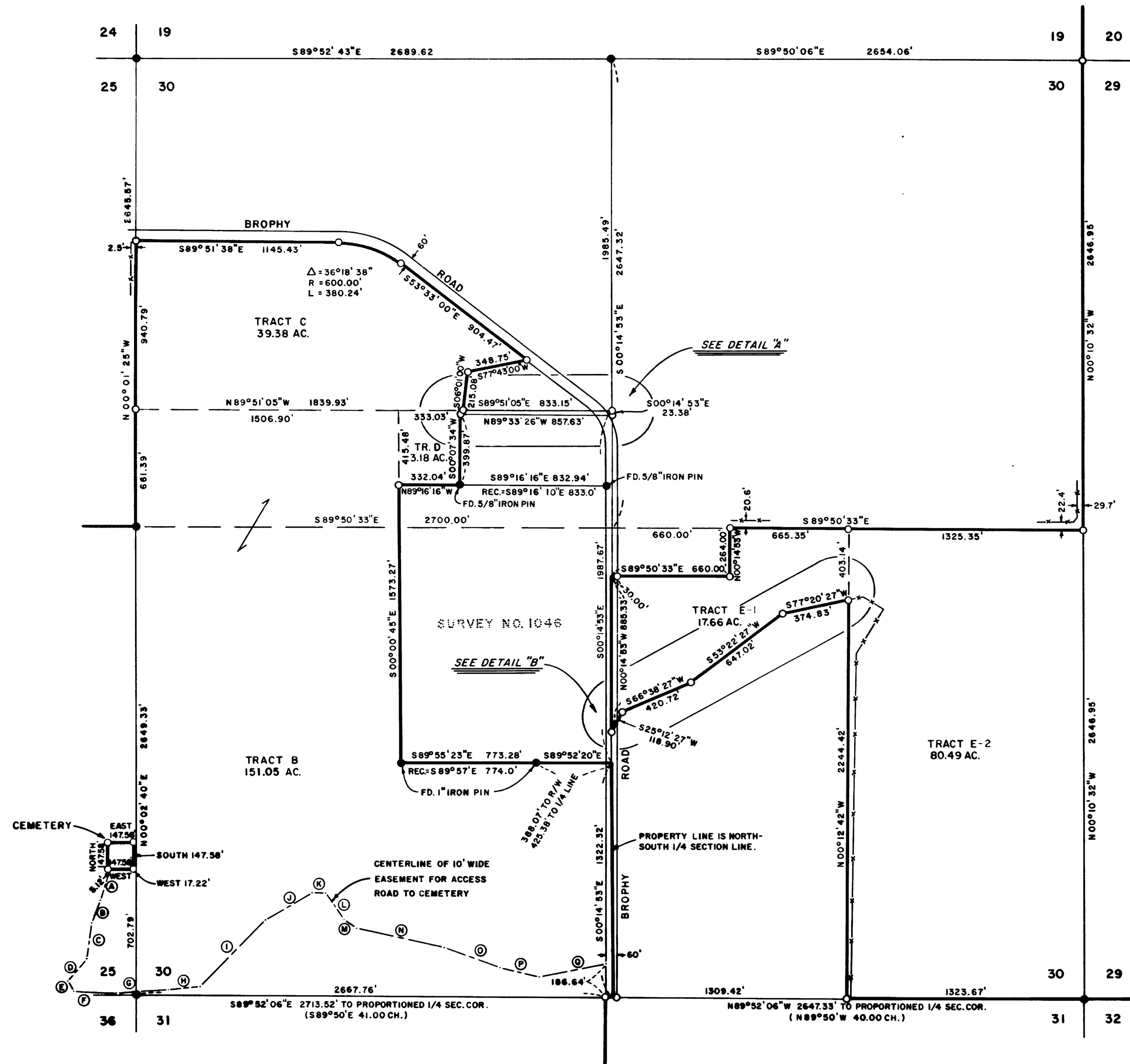
DETAIL OF SECTION 30, T.35S, R.1E, W.M.
SCALE: 1" = 400'



DETAIL "A"
SCALE: 1" = 100'

DETAIL "B"
SCALE: 1" = 100'

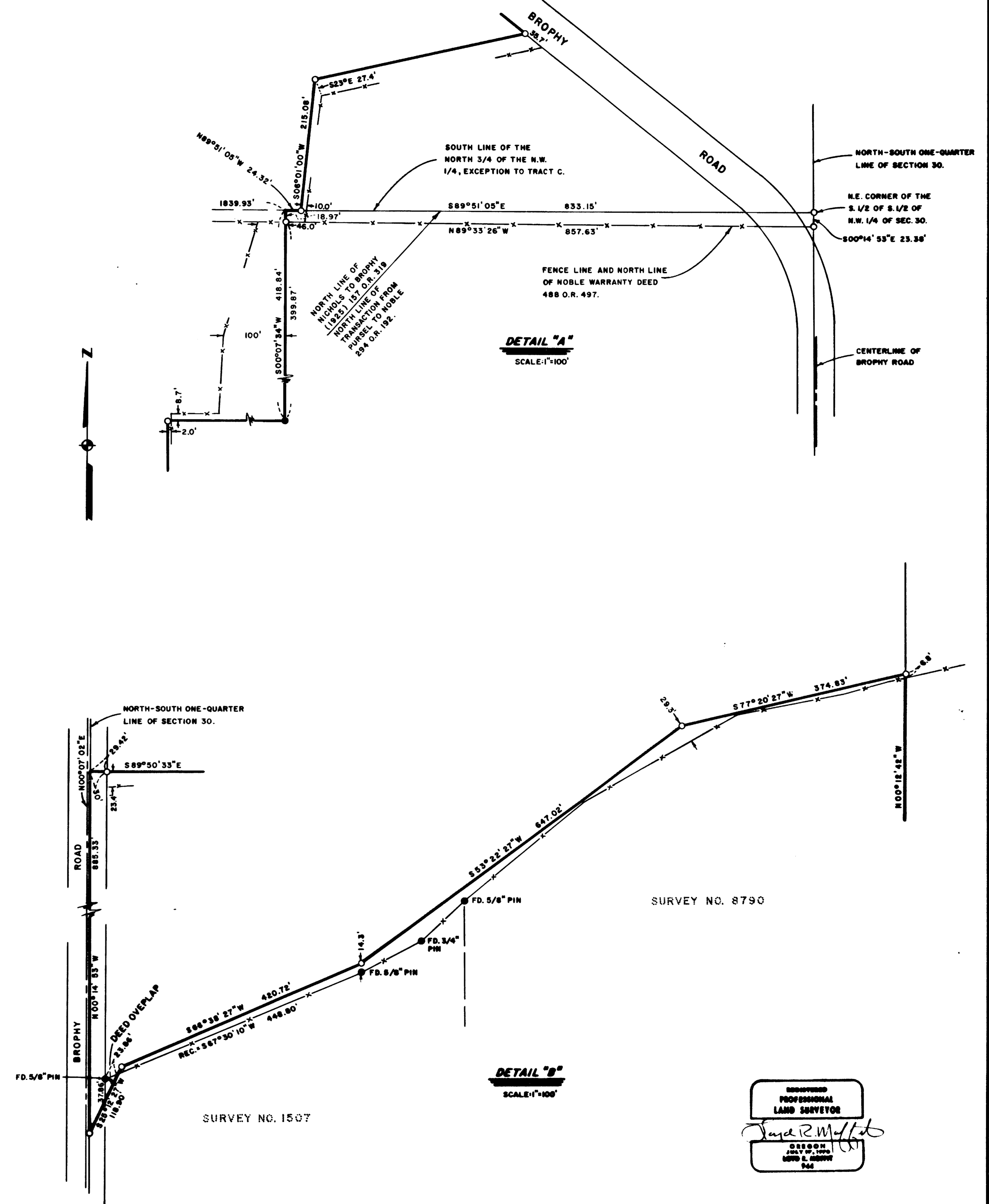
PROFESSIONAL
LAND SURVEYOR
Jane R. Moffat
OSBORN
JULY 17, 1990
NO. 1, 000000
924



CENTERLINE OF CEMETERY ACCESS ROAD

COURSE	BEARING	DISTANCE
A	S 13° 48' 29" W	183.88'
B	S 29° 41' 24" W	134.11'
C	S 09° 30' 15" W	197.17'
D	S 36° 51' 19" W	165.77'
E	S 23° 22' 16" E	67.78'
F	S 89° 06' 46" E	243.56'
G	N 86° 04' 35" E	294.76'
H	N 84° 18' 86" E	183.31'
I	N 44° 02' 31" E	531.08'
J	N 61° 07' 49" E	301.76'
K	S 86° 33' 34" E	75.81'
L	S 38° 06' 22" E	180.42'
M	S 84° 24' 87" E	85.71'
N	S 77° 17' 00" E	519.88'
O	S 71° 42' 32" E	347.00'
P	S 79° 07' 00" E	218.73'
Q	N 79° 21' 20" E	281.90'

DETAIL OF SECTION 30, T.35S., R.1E., W.M.
SCALE: 1" = 400'



DETAIL "A"
SCALE: 1" = 100'

DETAIL "B"
SCALE: 1" = 100'

REGISTERED PROFESSIONAL LAND SURVEYOR
Jane R. Moffitt
 OSBORN
 JULY 17, 1998
 924