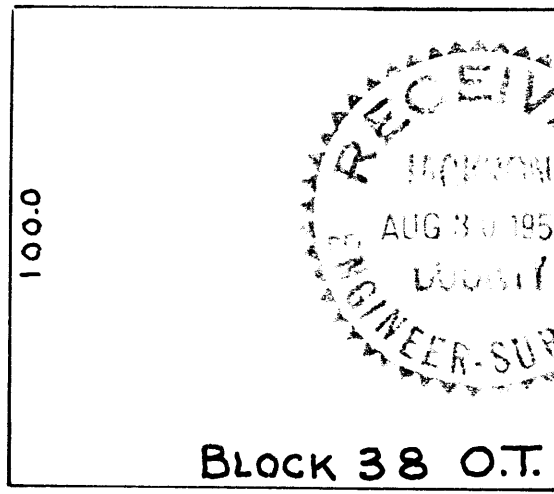


GRAPE STR.

**SURVEY FOR
UNITED RADIO SUPPLY
LOTS 1 & 2, Block 38 O.T.
Aug. 17, 1957**

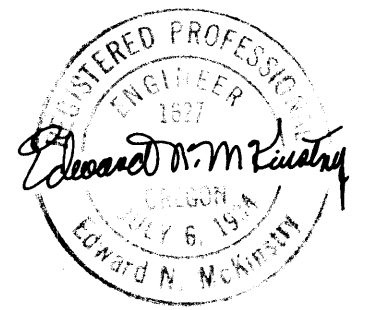
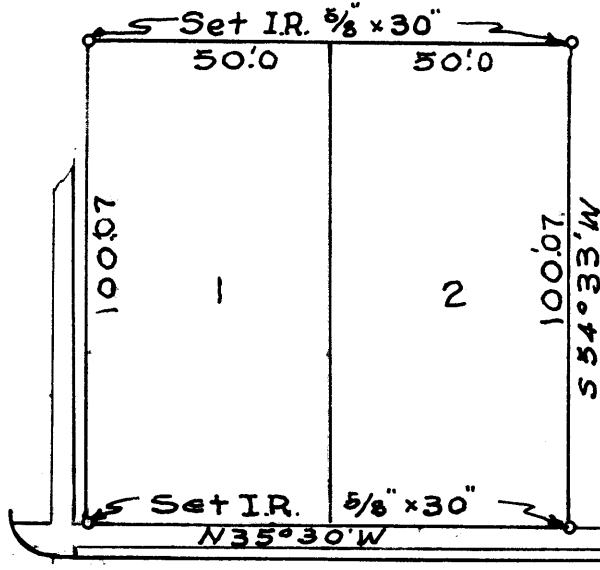
Recorded Survey No. 1023



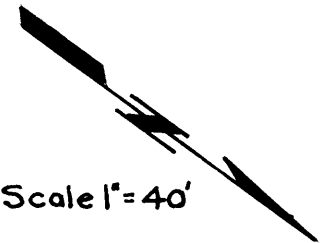
Block 38 O.T.

FIRST STR.

275.16



Scale 1" = 40'



FIR STR.

THIRD STR.

MON

MON.

90°03'

89°37'

Survey description to comply with Par. 209.250 Ore. Rev. Statutes

For: United Radio Supply

Purpose: To set property corners on Lots 1 and 2, Block 38, Original Town.

Procedure:

The distance from the center line of Grape Street to the center line of Fir Street was chained and found to be 275.16 feet. The record distance is 275.0. This over plus was then proportioned.

The transit was set on the monument at 3rd and Fir Streets, a backsite was taken on the monument at 6th and Fir and the intersection was made at 1st and Fir Streets. With the transit at 1st and Fir Streets, temporary points were set in the pavement at 30 feet and at 130 feet. The transit was set on the temporary points at 30 feet and 130 feet and an angle of $89^{\circ} 57'$ was turned to the left and an iron rod $5/8'' \times 30''$ set at 25 feet and at 100.07 for the proportionate distance East and West.

