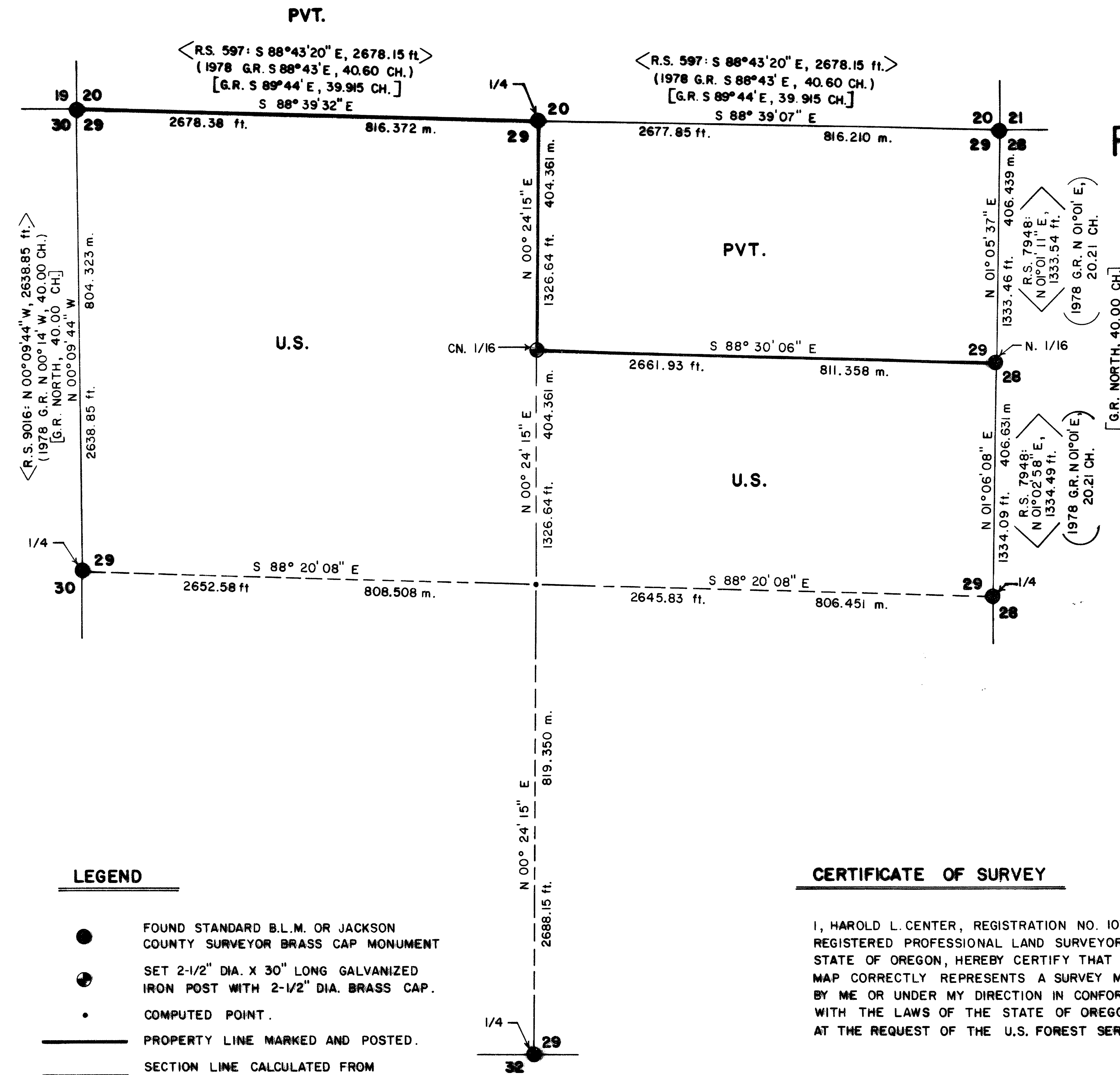


MAP OF SURVEY  
FOR

ROGUE RIVER NATIONAL FOREST

P.O. BOX 520  
MEDFORD, OREGON  
97501

JANUARY 25, 1985



HISTORY OF SURVEYS

THE ORIGINAL SURVEY OF SECTION 29 WAS PERFORMED BY DEPUTY SURVEYOR NATHANIEL FORD UNDER CONTRACT NO. 58, DATED APRIL 18, 1855.

THE NORTHWEST AND NORTHEAST CORNERS OF SECTION 29 WERE PERPETUATED FROM ORIGINAL EVIDENCE BY C.Z. BOYDEN, DEPUTY JACKSON COUNTY SURVEYOR, ON APRIL 4, 1930, AND SUBSEQUENTLY REMONUMENTED BY THE BUREAU OF LAND MANAGEMENT IN 1966.

THE NORTH ONE-QUARTER CORNER OF SECTION 29 WAS REESTABLISHED BY PROPORTIONATE MEASURE BY MARK E. BOYDEN, P.L.S. 281, UNDER RECORD SURVEY NO. 597, DATED DECEMBER 3, 1953, AND SUBSEQUENTLY REMONUMENTED BY THE BUREAU OF LAND MANAGEMENT IN 1978.

THE BUREAU OF LAND MANAGEMENT ALSO PERFORMED A DEPENDENT RESURVEY OF A PORTION OF TOWNSHIP 35 SOUTH, RANGE 3 EAST IN 1977-1978, AND REMONUMENTED THE WEST ONE-QUARTER CORNER OF SECTION 29, REESTABLISHED THE SOUTH ONE-QUARTER CORNER OF SECTION 29 BY PROPORTIONATE MEASURE, AND ESTABLISHED THE NORTH ONE-SIXTEENTH CORNER COMMON TO SECTIONS 28 AND 29.

THE EAST ONE-QUARTER CORNER OF SECTION 29 WAS REMONUMENTED FROM ORIGINAL EVIDENCE BY THE JACKSON COUNTY SURVEYORS OFFICE IN 1978.

THE EAST LINE OF SECTION 29 WAS RESURVEYED BY ARTHUR R. RAMBO, P.L.S. 1086, UNDER RECORD SURVEY NO. 7948, DATED AUGUST 16, 1979.

THE WEST LINE OF SECTION 29 WAS RESURVEYED BY HAROLD L. CENTER, P.L.S. 1071, UNDER RECORD SURVEY NO. 9016, DATED AUGUST 31, 1981.

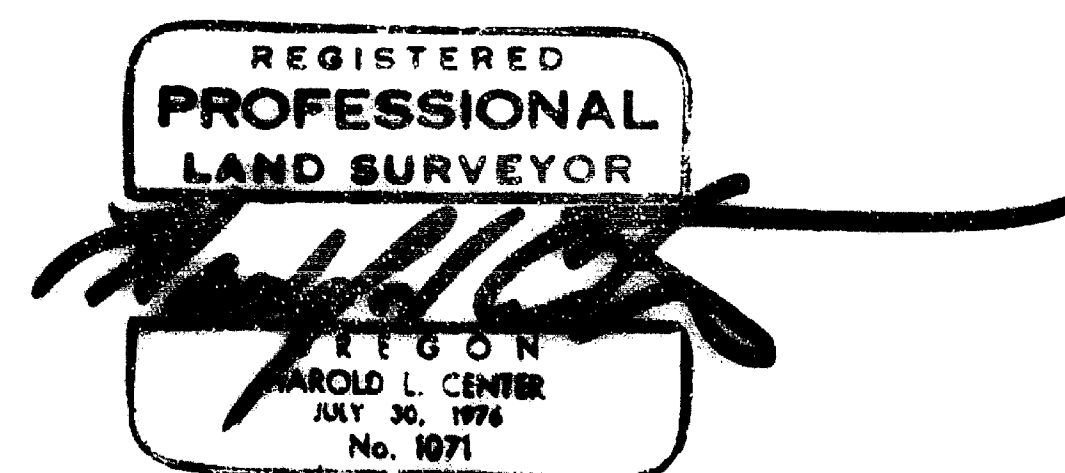
NO OTHER SURVEYS OF RECORD WERE NOTED.

LEGEND

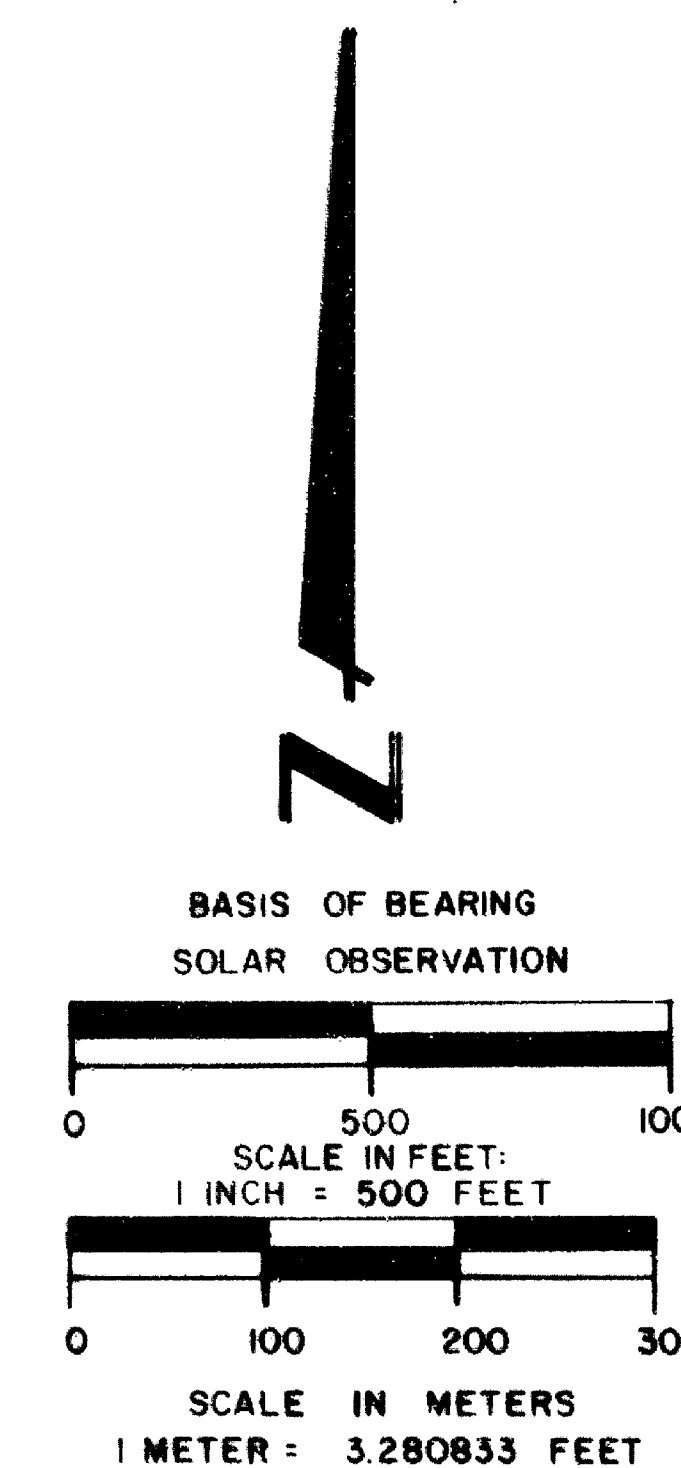
- FOUND STANDARD B.L.M. OR JACKSON COUNTY SURVEYOR BRASS CAP MONUMENT
- ⊙ SET 2-1/2" DIA. X 30" LONG GALVANIZED IRON POST WITH 2-1/2" DIA. BRASS CAP.
- COMPUTED POINT.
- PROPERTY LINE MARKED AND POSTED.
- SECTION LINE CALCULATED FROM TRAVERSE.
- - - SUBDIVISION LINE.
- [ GR. ] GOVERNMENT RECORD.
- ( ) 1978 B.L.M. SURVEY.
- < > RECORD PRIVATE SURVEY.

CERTIFICATE OF SURVEY

I, HAROLD L. CENTER, REGISTRATION NO. 1071 REGISTERED PROFESSIONAL LAND SURVEYOR, STATE OF OREGON, HEREBY CERTIFY THAT THIS MAP CORRECTLY REPRESENTS A SURVEY MADE BY ME OR UNDER MY DIRECTION IN CONFORMANCE WITH THE LAWS OF THE STATE OF OREGON, AT THE REQUEST OF THE U.S. FOREST SERVICE.

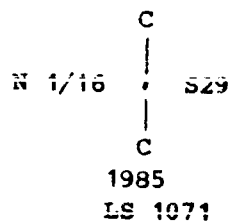


**\*\* RECEIVED \*\***  
Date: 3/16/85 By: JLC  
This survey consists of:  
1 sheet(s) Map  
5 page(s) Narrative  
JACKSON COUNTY SURVEYOR



U.S. DEPARTMENT OF AGRICULTURE <b>FOREST SERVICE</b> REGION 6 ROGUE RIVER NATIONAL FOREST	
<b>DEPENDENT RESURVEY AND SECTION SUBDIVISION</b>	
SECTION 29, T.35 S., R.3 E., W.M. <b>JACKSON COUNTY, OREGON</b>	
REVIEWED BY: <i>Dick Hathaway</i>	DATE: <i>2/19/85</i>
APPROVED BY: <i>Dick Hathaway</i>	DATE: <i>2/19/85</i>
PROJECT 84-29	

At the corner point, I set a 2½-inch diameter, 30-inch long galvanized iron post with a 2½-inch diameter brass cap marked:



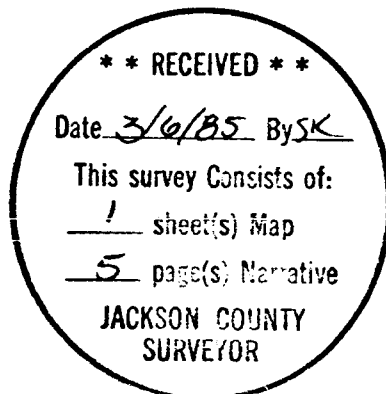
From which the following references:

An 11-inch diameter pine bears S39°14'W, 30.07 feet distance, scribed "CN 1/16 S29 LS 1071 BT" on a single blaze.

An 11-inch diameter pine bears N41°35'W, 39.80 feet distance, scribed "CN 1/16 S29 LS 1071 BT" on a single blaze.

January 25, 1985

HAROLD L. CENTER  
Registered Professional Land Surveyor  
Oregon Certificate No. 1071



From which the following references:

An 8-inch diameter pine bears N79°12'E, 14.90 feet distance, with a single healed blaze.

A 9-inch diameter pine bears N60°05'W, 6.67 feet distance, with a single healed blaze.

One-quarter corner common to Sections 28 and 29, Township 35 South, Range 3 East.

At the corner point, I found a standard Jackson County Surveyor's Office brass cap monument marked:

Jackson County 1978

1/4S  
|  
29 • 28  
|

From which the following references:

An 8-inch diameter cedar bears N74°51'E, 29.28 feet distance, with scribe marks "1/4 S 28 BT" visible on a partially healed single blaze.

A 12-inch diameter fir bears S23°37'W, 22.23 feet distance, with a double healed blaze.

A 6-inch diameter cedar bears S59°02'W, 12.65 feet distance, with scribe marks "1/4 S 29 BT" visible on a partially healed blaze.

A rotted fir stump, diameter indeterminate, bears N78°59'W, 18.15 feet distance.

One-quarter corner common to Sections 29 and 32, Township 35 South, Range 3 East.

At the corner point, I found a standard Bureau of Land Management brass cap monument marked:

U.S. Dept. of Interior  
Unlawful to Disturb  
T35S R3E

1/4  $\frac{S29}{S32}$

1977  
Cadastral Survey  
Bureau of Land Management

From which the following references:

A 13-inch diameter pine bears S24°16'W, 83.99 feet distance, with a single healed blaze.

A 10-inch diameter fir bears N30°19'W, 16.05 feet distance, with a single healed blaze.

Corners Established This Survey

Center-north one-sixteenth corner of Section 29, Township 35 South, Range 3 East.

U.S. Dept. of Interior  
Unlawful to Disturb  
T35S R3E

S20	S21
S29	S28

1968  
Cadastral Survey  
Bureau of Land Management

From which the following references:

A 15-inch diameter fir bears N28°57'E, 10.98 feet distance, with a single healed blaze.

A 24½-inch diameter cedar bears S08°43'E, 56.32 feet distance, with a single healed blaze.

A 25½-inch diameter fir bears S15°20'W, 70.47 feet distance, with a single healed blaze.

A fir stump, diameter indeterminate, bears S72°16'W, 10.93 feet distance, with scribe marks visible on an opened blaze.

A 14½-inch diameter fir bears N22°19'W, 52.86 feet distance, with a single healed blaze.

North one-sixteenth corner common to Sections 28 and 29, Township 35 South, Range 3 East.

At the corner point, I found a standard Bureau of Land Management brass cap monument marked:

U.S. Dept. of Interior  
Unlawful to Disturb  
T35S R3E  
N 1/16

S29	S28
-----	-----

1978  
Cadastral Survey  
Bureau of Land Management

From which the following references:

An 8-inch diameter fir bears S21°53'E, 29.28 feet distance, with a single healed blaze.

A 14-inch diameter fir bears S57°26'W, 40.76 feet distance, with a single healed blaze.

One-quarter corner common to Sections 29 and 30, Township 35 South, Range 3 East.

At the corner point, I found a standard Bureau of Land Management brass cap monument marked:

U.S. Dept. of Interior  
Unlawful to Disturb  
T35S R3E

¼	
S30	S29

1978  
Cadastral Survey  
Bureau of Land Management

U.S. Dept. of Interior  
Unlawful to Disturb  
T35S R3E

S19	S20
S30	S29

1966  
Cadastral Survey  
Bureau of Land Management

From which the following references:

A 29-inch diameter oak bears N39°56'E, 489.13 feet distance, with a double healed blaze.

A 17-inch diameter pine bears N60°55'E, 111.24 feet distance, with a healed blaze.

A 22-inch diameter pine bears S75°46'E, 79.00 feet distance, with a healed blaze.

The northwest corner of the foundation of a barn bears S48°15'E, 157.27 feet distance.

A 13½-inch diameter pine bears S33°33'W, 65.49 feet distance, with a healed blaze.

A 24-inch diameter pine bears S56°24'W, 189.45 feet distance, with a healed blaze.

A 7-inch diameter oak bears N35°47'W, 107.60 feet distance, with an opened blaze.

One-quarter corner common to Sections 20 and 29, Township 35 South, Range 3 East.

At the corner point, I found a standard Bureau of Land Management brass cap monument marked:

U.S. Dept. of Interior  
Unlawful to Disturb  
T35S R3E

¼ $\frac{S20}{S29}$
---------------------

1979  
Cadastral Survey  
Bureau of Land Management

From which the following references:

An 18-inch diameter pine bears N43°40'E, 25.76 feet distance, with a single healed blaze.

A 31½-inch diameter pine bears S35°14'E, 24.89 feet distance, with a double healed blaze.

Section corner common to Sections 20, 21, 28 and 29, Township 35 South, Range 3 East.

At the corner point I found a standard Bureau of Land Management brass cap monument marked:

SURVEY NARRATIVE TO COMPLY WITH  
PARAGRAPH 209.250 OREGON REVISED STATUTES

**SURVEY FOR:** Rogue River National Forest  
P. O. Box 520  
Medford, OR 97501

**LOCATION:** Section 29, Township 35 South, Range 3 East,  
Willamette Meridian, Jackson County, Oregon.

**BASIS OF BEARING:** Solar observation

**PURPOSE:** To establish monuments and mark and post National Forest boundaries along the west half of the north line of Section 29, and along interior lines of Section 29, as shown on attached map of survey.

**PROCEDURE:** Prior to commencement of this survey, an investigation of the controlling section and one-quarter section corners was made. The northeast and northwest corners of Section 29 were perpetuated from original evidence by C. Z. Boyden, Deputy Jackson County Surveyor on April 4, 1930, and subsequently remonumented by the Bureau of Land Management, Division of Cadastral Surveys, in 1966. The north one-quarter corner of Section 29 was reestablished by Mark E. Boyden, P.L.S. 281, under Record Survey No. 597, dated December 3, 1953, and subsequently remonumented by the Bureau of Land Management, Division of Cadastral Surveys, in 1978. The Bureau of Land Management also performed a dependent resurvey of a portion of Township 35 South, Range 3 East in 1977-78, and remonumented the west one-quarter corner of Section 29, reestablished the south one-quarter corner of Section 29 by proportionate measure, and established the north one-sixteenth corner common to Sections 28 and 29. The east one-quarter corner of Section 29 was remonumented from original evidence by the Jackson County Surveyor's Office in 1978.

Utilizing this corner control, I performed a closed traverse around Section 29, tying in the above controlling corners. After computing the closure and subdividing the section, I traversed the interior property lines and established the center-north one-sixteenth corner of Section 29.

Property lines were posted utilizing aluminum posts with National Forest boundary signs attached. Trees along the true lines were blazed and painted with red timber marking paint.

**EQUIPMENT USED:** This survey was performed utilizing a Wild T-16 Theodolite and a Wild DI-4 Electronic Distance Meter.

Corners Accepted For Control

Section corner common to Sections 19, 20, 29 and 30, Township 35 South, Range 3 East.

At the corner point, I found a standard Bureau of Land Management brass cap monument marked: