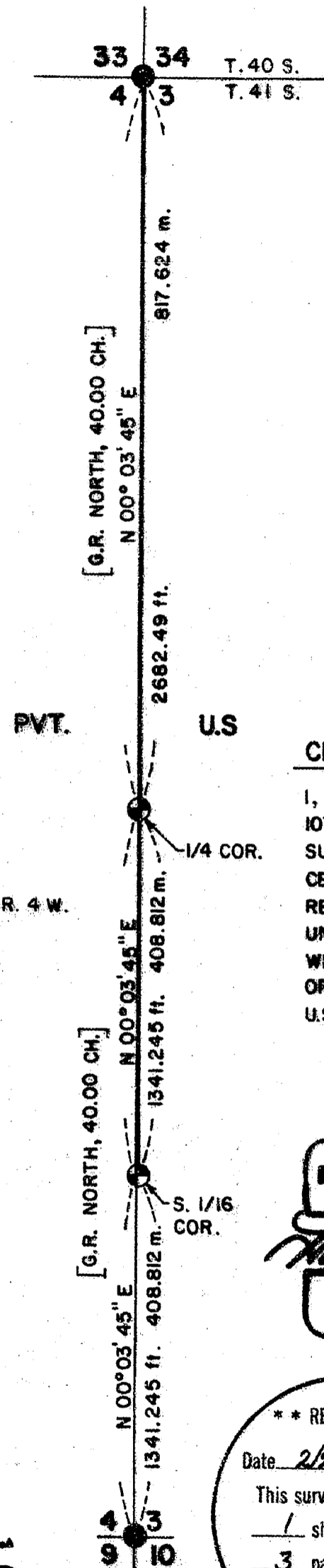


MAP OF SURVEY
 LOCATED IN
 SEC. 3, T. 41 S., R. 4 W., W.M.
 JACKSON COUNTY, OREGON
 FOR
ROGUE RIVER NATIONAL FOREST
 P.O. BOX 520
 MEDFORD, OREGON
JANUARY 15, 1985



LEGEND :

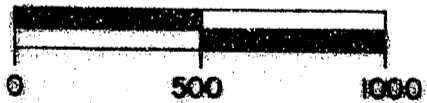
- FOUND STD. B.L.M. BRASS CAP MONUMENT.
- SET 2 1/2" DIA. X 30" LONG ALUMINUM POST WITH 2 1/2" DIA. ALUMINUM CAP.
- SECTION LINE CALCULATED FROM TRAVERSE.
- PROPERTY LINE MARKED AND POSTED.
- [G.R.] GOVERNMENT RECORD.

CERTIFICATE OF SURVEY

I, HAROLD L. CENTER, REGISTRATION NO. 1071, REGISTERED PROFESSIONAL LAND SURVEYOR, STATE OF OREGON, HEREBY CERTIFY THAT THIS PLAT CORRECTLY REPRESENTS A SURVEY MADE BY ME OR UNDER MY DIRECTION IN CONFORMANCE WITH THE LAWS OF THE STATE OF OREGON, AT THE REQUEST OF THE U.S. FOREST SERVICE.



BASIS OF BEARING
SOLAR OBSERVATION



SCALE IN FEET
1 INCH = 500

**** RECEIVED ****
 Date 2/22/85 By
 This survey Consists of:
1 sheet(s) Map
3 page(s) Narrative
 JACKSON COUNTY
 SURVEYOR

U.S. DEPARTMENT OF AGRICULTURE
FOREST SERVICE
 REGION 6 ROGUE RIVER NAT'L FOREST

REVIEWED BY: Dick McDaniel DATE: 2/19/85
 REVIEWED BY: Dick Hathaway DATE: 2/18/85

10195

A 21-inch diameter oak snag bears N60°33'W, 44.04 feet distance, with a healed blaze.

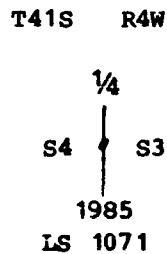
A 7-inch diameter fir snag bears N31°49'W, 11.60 feet distance, with scribe marks visible on a partially healed blaze.

A 13-inch diameter fir bears N30°56'W, 17.65 feet distance, with scribe marks visible on a partially healed blaze.

Corners Established This Survey

One-quarter corner common to Sections 3 and 4, Township 41 South, Range 4 West.

At a proportional position on line between the section corner common to Sections 33, 34, 3 and 4, and the section corner common to Sections 3, 4, 9 and 10, I set a 2½ inch diameter, 30 inch long aluminum post with a 2½ inch diameter aluminum cap marked:



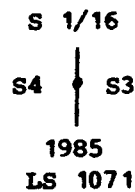
From which the following references:

An 8-inch diameter fir bears S24°17'E, 15.17 feet distance, scribed "1/4 S3 LS 1071 BT."

A 12-inch diameter fir bears S88°24'W, 14.88 feet distance, scribed "1/4 S4 LS 1071 BT."

South one-sixteenth corner common to Sections 3 and 4, Township 41 South, Range 4 West.

At the corner point, I set a 2½ inch diameter, 30 inch long aluminum post with a 2½ inch diameter aluminum cap marked:



From which the following references:

A 10-inch diameter oak bears S55°11'E, 44.49 feet distance, scribed "S 1/16 S3 LS 1071 BT."

A 7-inch diameter fir bears N63°02'W, 51.97 feet distance, scribed "S 1/16 S4 LS 1071 BT."

January 15, 1985

HAROLD L. CENTER
Registered Professional Land Surveyor
Oregon Certificate No. 1071

