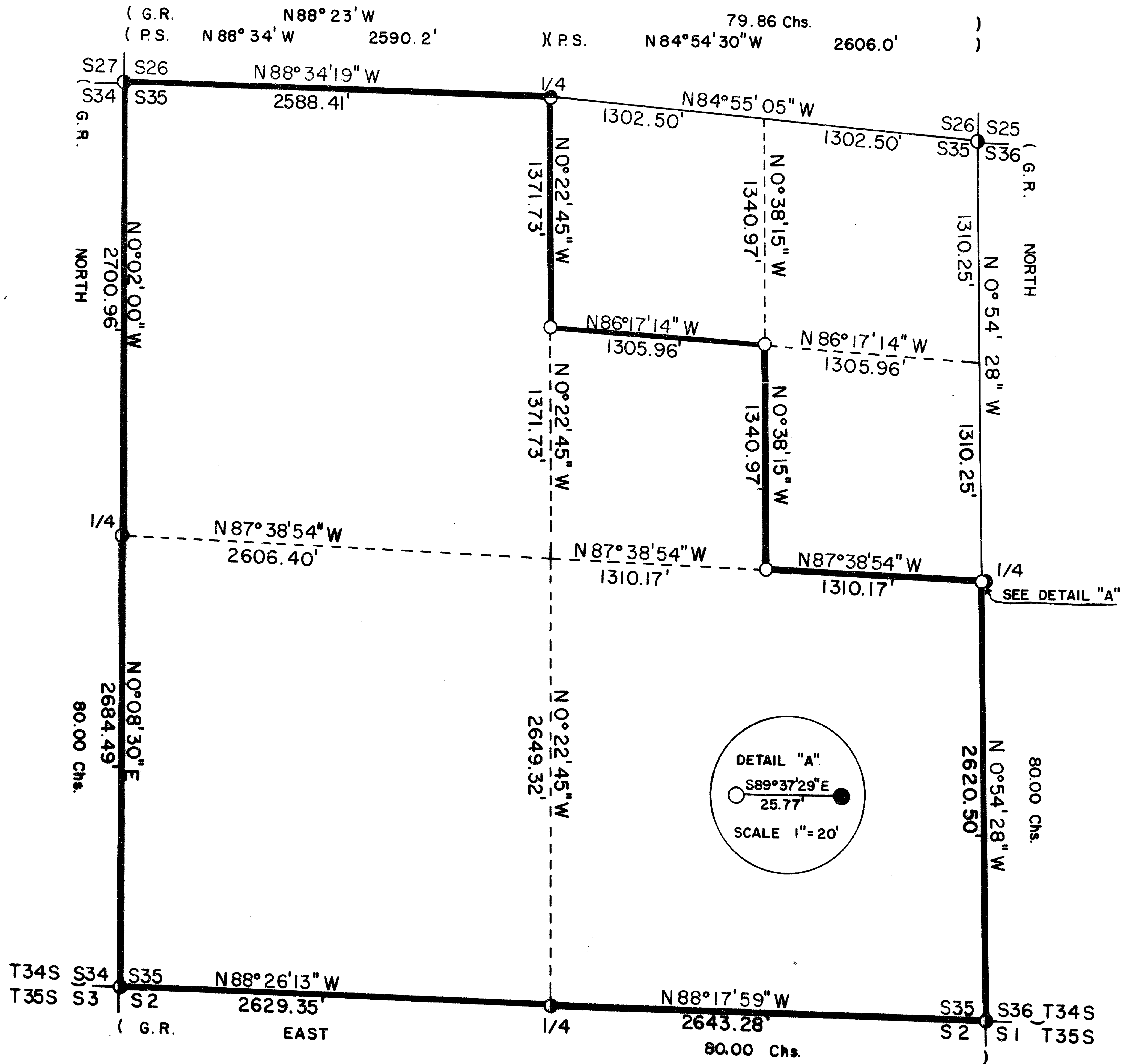


S35 T34S R3E W.M.



CERTIFICATE OF SURVEY

I, ARTHUR R. RAMBO, REGISTRATION No. 1086 REGISTERED PROFESSIONAL LAND SURVEYOR STATE OF OREGON, HEREBY CERTIFY THAT THIS MAP CORRECTLY REPRESENTS A SURVEY MADE BY ME OR UNDER MY DIRECTION IN CONFORMANCE WITH THE LAWS OF THE STATE OF OREGON.



LEGEND

- SET 5/8" BY 30" REBAR WITH 1 1/2" ALUM. CAP
- FOUND STANDARD BLM MONUMENT
- FOUND 1 3/4" O.D. IRON PIPE
- FOUND 2" IRON PIPE WITH 1 3/4" PLUG
- G.R. 1883 GOVERNMENT RECORD
- LINE POSTED AND BLAZED THIS SURVEY
- P.S. PRIVATE SURVEY No. 4759

BASIS OF BEARING

SOLAR OBSERVATION

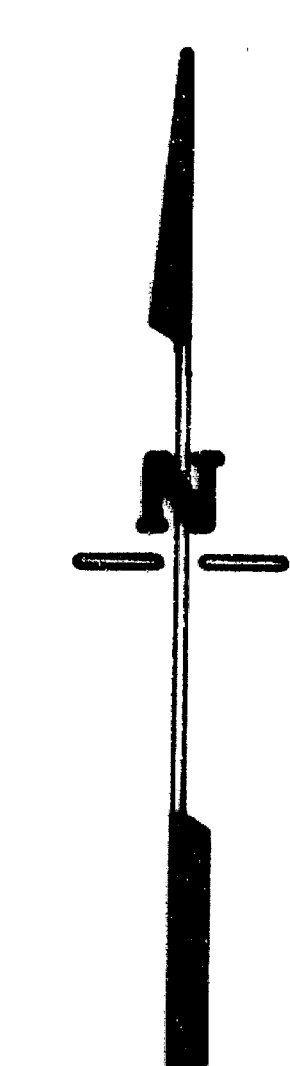
SCALE

1" = 500'

DATE

NOVEMBER 20, 1984

** RECEIVED **
 Date 12/4/84 By SK
 This survey consists of:
 1 sheet(s) Map
 4 page(s) Narrative
 JACKSON COUNTY SURVEYOR



Centereast one-sixteenth corner Section 35, Township 34 South, Range 3 East, Willamette Meridian. At the corner location I set a 36 by 5/8 inch rebar 25 inches in the ground with a 1½ inch Alum. Cap marked:

T34S R3E
CE
S 1 35
16
LS1086

From which:

A 20 inch dia. Douglas Fir bears N 83° 04' W 10.9 feet marked CE1/16S35 in upper face, BT in lower face.

A 9 inch dia. White Fir bears S 28° 02' E 39.9 feet marked CE1/16S35 in upper face, BT in lower face.

Northeast one-sixteenth corner Section 35, Township 34 South, Range 3 East, Willamette Meridian. At the corner location I set a 36 by 5/8 inch rebar 24 inches in the ground with a 1½ inch Alum. Cap marked:

T34S R3E
NE
S 1 35
16
LS1086

From which:

A 9½ inch dia. Douglas Fir bears S 20° 05' E 27.0 feet marked NE1/16S35 in upper face, BT in lower face.

A 12½ inch dia. Douglas Fir bears S 23° 09' W 20.1 feet marked NE1/16S35 BT all in one face.

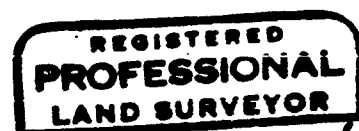
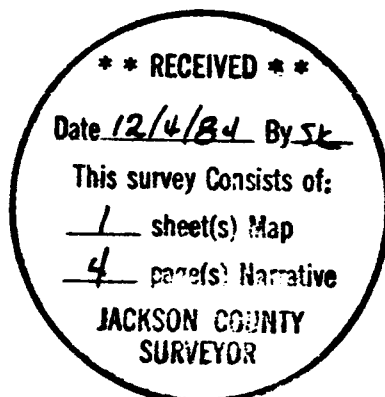
Centernorth one-sixteenth corner Section 35, Township 34 South, Range 3 East, Willamette Meridian. At the corner location I set a 36 by 5/8 inch rebar 22 inches in the ground with a 1½ inch Alum. Cap marked:

T34S R3E
CN
S 1 35
16
LS1086

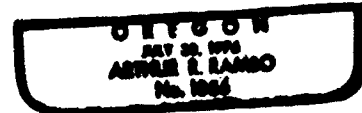
From which:

An 11 inch dia. Douglas Fir bears S 42° 45' W 16.1 feet marked CN1/16S35 in upper face, BT in lower face.

A 10 inch dia. Douglas Fir bears S 57° 36' E 24.8 feet marked CN1/16S35 in upper face, BT in lower face.



Arthur R. Rambo



- A 49 inch dia. Cedar bears S 52° 39' E 61.8 feet with an unopened face.
- A 26 inch dia. Pine bears S 17° 47' W 21.9 feet with two unopened faces.
- A 24 inch dia. Fir bears N 59° 02' W 24.6 feet with an unopened face.

One-quarter corner common to Section 35, Township 34 South, Range 3 East and Section 2, Township 35 South, Range 3 East. At the corner location I found a standard Bureau of Land Management monument exposed 10 inches, with a 17 inch by 5½ inch by 5½ inch stone with 1/4 marked on North side of stone against South side of monument, monument marked:

T34S R3E
 1 S35
 4 S2
 T35S
 1964

From which:

- A 15½ inch dia. Fir bears S 84° 34' W 65.6 feet with an unopened face.
- A 12 inch dia. Fir bears N 16° 07' E 47.0 feet with an unopened face.

Section corner common to Sections 35 and 36, Township 34 South, Range 3 East, and Sections 1 and 2, Township 35 South, Range 3 East. At the corner location I found a standard Bureau of Land Management monument exposed 6 inches in a mound of stone marked:

T34S R3E
 S35 | S36
 S2 | S1
 T35S
 1964

From which:

- A 35 inch dia. Pine bears N 51° 17' W 68.2 feet with a partially healed face.
- An 11 inch dia. Pine bears N 9° 35' W 83.3 feet with a partially healed face.
- A 16½ inch dia. Pine bears N 19° 50' E 70.6 feet with a partially healed face.
- A 26½ inch dia. Pine bears N 43° 43' E 65.4 feet with an unopened face.
- A 38 inch dia. Pine bears S 73° 22' E 14.1 feet with an unopened face.
- An 11 inch dia. Pine bears S 20° 48' E 42.1 feet with an unopened face.
- An 11 inch dia. Fir bears S 55° 40' W 42.7 feet with an unopened face.

CORNERS SET THIS SURVEY:

All measurements to bearing trees are to the center of tree at the base unless otherwise stated. All bearing trees have a brass washer marked LS 1086 nailed to the BT face of tree.

One-quarter corner common to Sections 35 and 36, Township 34 South, Range 3 East, Willamette Meridian. At the corner location I set a 36 by 5/8 inch rebar 36 inches in the ground with a 1½ inch Alum. Cap marked:

T34S R3E
 1
 4
 S35 + S36
 LS1086

From which:

- The 1½ inch dia. pipe set by the Jackson County Surveyor in 1936 bears S 89° 37' E 25.77 feet.
- A 15½ inch dia. White Fir bears S 55° 40' W 87.4 feet marked 1/4 835 in upper face, BT in lower face.
- A 15½ inch dia. White Fir bears S 23° 52' E 21.9 feet marked 1/4 836 in upper face, BT in lower face.

One-quarter corner common to Sections 26 and 35, Township 34 South, Range 3 East. At the corner location I found a plugged 2 inch dia. iron pipe exposed 9 inches in a mound of stone marked:

S26
MEDCO
S35

From which:

- A 16½ inch dia. Fir bears N 74° 57' W 5.6 feet with an unopened face.
- An 11 inch dia. Fir bears S 15° 09' W 45.0 feet with an unopened face.

Section corner common to Sections 26, 27, 34, and 35, Township 34 South, Range 3 East. At the corner location I found a standard Bureau of Land Management monument exposed 6 inches marked:

T34S R3E
S27 | S26
S34 | S35
1964

From which:

- An 11½ inch dia. Fir bears S 34° 38' E 85.1 feet with an unopened face.
- A 27½ inch dia. Fir bears S 32° 06' W 27.8 feet bark scribed.
- An 8½ inch dia. Fir bears S 80° 44' W 30.7 feet with an unopened face.
- An 11 inch dia. Fir bears N 33° 30' W 31.8 feet to unopened face.
- An 11 inch dia. Fir bears N 21° 51' W 13.7 feet with an unopened face.
- A 9½ inch dia. Fir bears N 63° 20' E 21.2 feet with an unopened face.
- A 20 inch dia. Fir bears N 49° 33' E 39.0 feet.

One-quarter corner common to Sections 34 and 35, Township 34 South, Range 3 East. At the corner location I found a standard Bureau of Land Management monument exposed 3½ inches, with a 6½ inch by 9 inch by 12 inch stone with a X on top of stone against East side of monument, monument marked:

1/4
S34 | S35
T34S | R3E
1964

From which:

- A 12½ inch dia. Fir bears N 68° 00' E 27.8 feet with an unopened face.
- A 35 inch dia. Pine stub bears N 80° 22' E 38.1 feet marked with a 4 in upper face, no scribes visible in lower face.
- An 11 inch dia. Fir bears N 82° 23' E 14.9 feet with two healed faces.
- A 30 inch dia. Pine stump bears S 43° 16' W 18.7 feet with an open face, no scribes visible.
- A 14½ inch dia. Fir bears N 88° 45' W 36.6 feet with an unopened face.
- A 16 inch dia. Fir bears N 31° 23' W 38.7 feet with two unopened faces.

Section corner common to Sections 34 and 35, Township 34 South, Range 3 East, and Sections 2 and 3, Township 35 South, Range 3 East. At the corner location I found a standard Bureau of Land Management monument with a 9½ inch by 6 inch by 10 inch stone against East side of monument with 4 notches on West and 2 notches on East side of stone, monument marked:

T34S R3E
S34 | S35
S3 | S2
T35S
1964

From which:

- A 19 inch dia. Fir bears N 46° 26' E 29.0 feet with an unopened face.
- A 10½ inch dia. Pine bears N 72° 34' E 28.0 feet marked 34S R3E S35.
- A 9 inch dia. Fir bears S 52° 39' E 18.0 feet with an unopened face.

SURVEY NARRATIVE TO COMPLY WITH O.R.S. 209.250

Location: Section 35, Township 34 South, Range 3 East, Willamette Meridian, Jackson County, Oregon

Survey for: Medford Resources Corporation
P. O. Box 550
Medford, Oregon 97501

Survey by: Arthur R. Rambo PLS 1086
331 Bluff Street
Butte Falls, Oregon 97522

Date: November 20, 1984

Purpose: To mark and post the boundaries of Medford Resources Corporation land in the Northeast quarter of said section, and to mark and post the boundaries of Medford Resources Corporation land that adjoins said section as shown on the plat to accompany this narrative.

Procedure: The original survey of section 35 was completed by Rufus Moore under contract #475 dated July 3, 1883. The Bureau of Land Management, Cadastral Surveyors have reestablished the Northeast, Northwest, West one-quarter, Southwest, South one-quarter, and Southeast corners from original evidence. Duane Smeltzer (PLS 461) reestablished the North one-quarter corner from original evidence on survey #4759. The Jackson County Surveyor reestablished the East one-quarter corner by proportionate measurement.

I performed a closed traverse survey beginning at the Northeast corner then I proceeded to the North $\frac{1}{4}$ corner, then to the Northwest corner, then to the West $\frac{1}{4}$ corner, then to the Southwest corner, then to the South $\frac{1}{4}$ corner, then to the Southeast corner, then to the East $\frac{1}{4}$ corner, then back to the Northeast corner closing the survey. I found the East $\frac{1}{4}$ corner, which had been set by proportionate measurement, had been set 25.77 feet out of position. Another search for the original corner was made; no evidence could be found so I calculated a proportion position and set the $\frac{1}{4}$ corner on line. Then I performed a closed traverse of the interior lines needed beginning and closing on the exterior lines of the section. I set corners and posted lines as shown on the plat to accompany this narrative.

CORNERS FOUND AND ACCEPTED FOR CONTROL:

All measurements to bearing trees are to the center of tree at the base unless otherwise stated.

Section corner common to Sections 25, 26, 35, and 36, Township 34 South, Range 3 East. At the corner location I found a standard Bureau of Land Management monument marked:

T34S	R3E
826	825
835	836
1964	

From which:

- A 14 inch dia. Fir bears S 79° 27' E 76.8 feet with unopened face.
- A 26 $\frac{1}{2}$ inch dia. Fir bears S 13° 25' E 14.4 feet with unopened face.
- A 23 inch dia. Fir stump bears S 60° 55' W 6.5 feet with open face, no marks visible.
- A 21 inch dia. Fir bears N 88° 17' W 78.0 feet with unopened face.
- A 20 inch dia. Fir bears N 55° 48' W 64.7 feet with unopened face.
- A 12 $\frac{1}{2}$ inch dia. Fir bears N 18° 20' E 40.3 feet with unopened face.