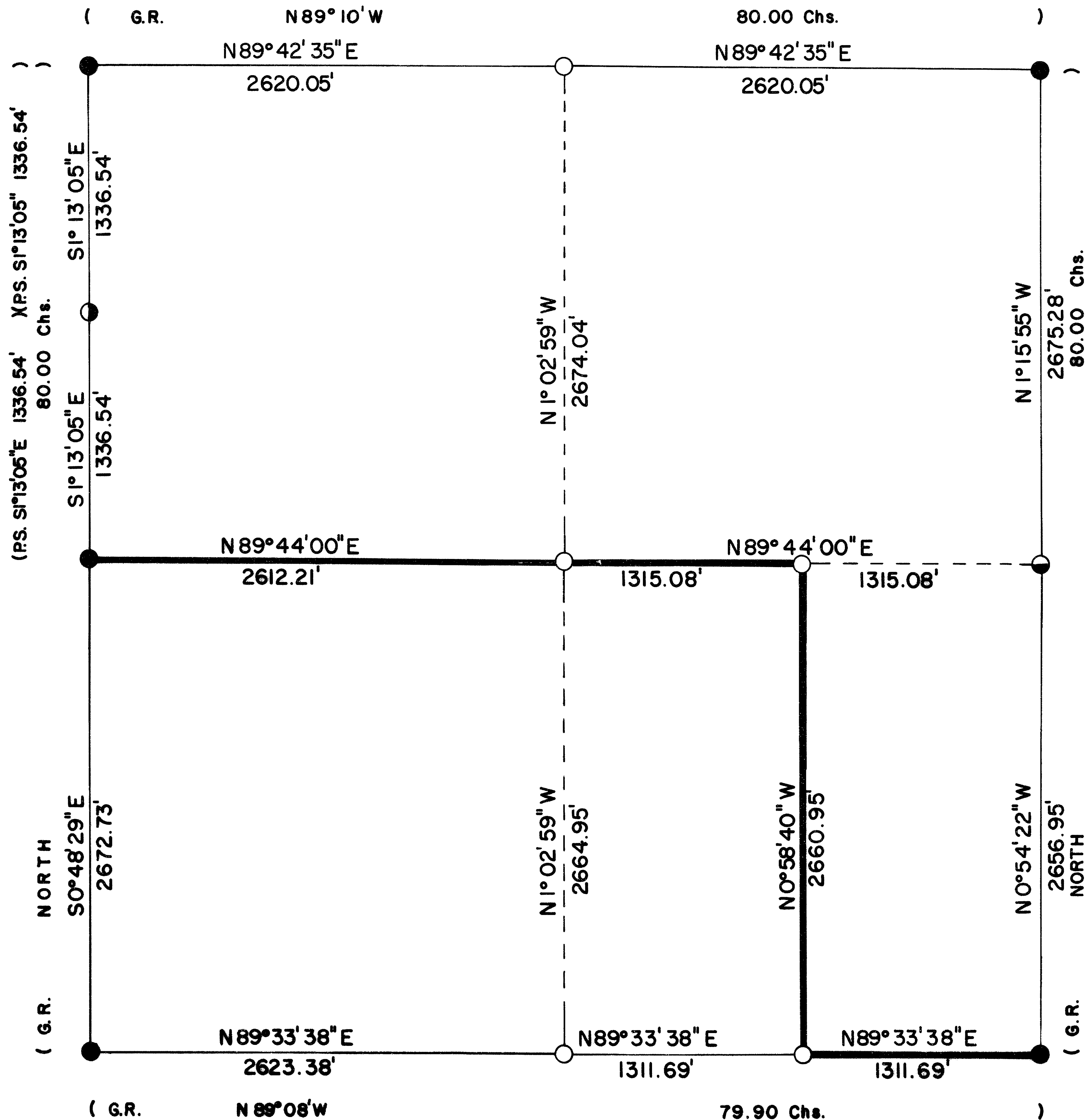
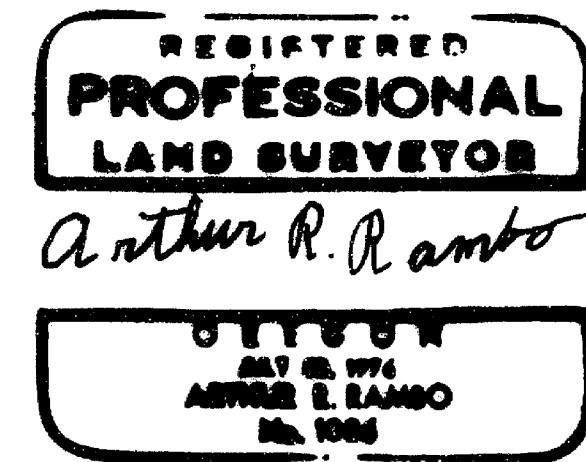


S9 T34S R3E W.M.



CERTIFICATE OF SURVEY

I, ARTHUR R. RAMBO, REGISTRATION No. 1086 REGISTERED PROFESSIONAL LAND SURVEYOR STATE OF OREGON, HEREBY CERTIFY THAT THIS MAP CORRECTLY REPRESENTS A SURVEY MADE BY ME OR UNDER MY DIRECTION IN CONFORMANCE WITH THE LAWS OF THE STATE OF OREGON.



LEGEND

- SET 5/8" BY 36" REBAR WITH 1 1/2" ALUM. CAP
- FOUND STANDARD B.L.M. MONUMENT
- ⊙ FOUND MONUMENT SET SURVEY No. 9849
- FOUND COUNTY MONUMENT
- G.R. 1883 GOVERNMENT RECORD
- P.S. PRIVATE SURVEY
- LINE POSTED AND BLAZED THIS SURVEY
- - - CALCULATED LINE

BASIS OF BEARING

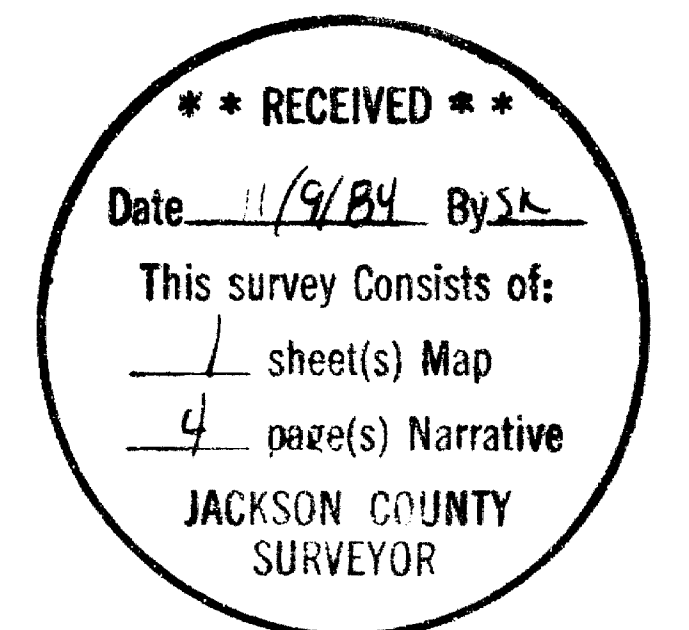
SURVEY No. 9849

SCALE

1" = 500'

DATE

OCTOBER 10, 1984



East one-sixteenth corner common to Section 9 and 16 Township 34 South Range 3 East Willamette Meridian. At the corner location I set a 5/8" by 36" rebar, exposed 20 inches, with a 1½ inch Alum. cap marked

T34S R3E
S 9
E1/16 S 16
LS1086

From which

An 8 inch dia. Fir bears S83°27'E 24.2 feet marked
E1/16 S16 in upper face, BT in lower face
A 14 inch dia. Fir bears N51°43'E 13.0 feet marked
E1/16 S9 in upper face, BT in lower face

Centereast one-sixteenth corner Section 9 Township 34 South Range 3 East Willamette Meridian. At the corner location I set a 5/8" by 36" rebar, exposed 12 inches, with a 1½ inch Alum. cap marked

T34S R3E
S 9
CE1/16+
LS1086

From which

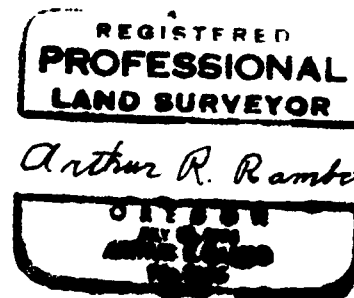
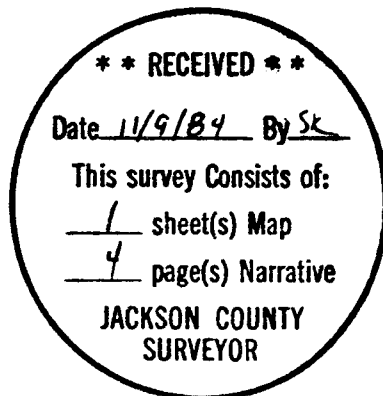
A 10½ inch dia. Fir bears N33°22'E 33.5 feet marked
CE1/16 S9 in upper face, BT in lower face
A 10 inch dia. Fir bears S33°28'E 25.0 feet marked
CE1/16 S9 in upper face, BT in lower face

Center one-quarter corner Section 9 Township 34 South Range 3 East Willamette Meridian. At the corner location I set a 5/8" by 36" rebar, exposed 12 inches, with a 1½ inch Alum. cap marked

T34S R3E
S 9
C1/4 +
LS1086

From which

An 8 inch dia. Cedar bears S73°24'E 37.0 feet marked
C1/4 S9 in upper face, BT in lower face
A 7 inch dia. Pine bears N47°34'E 56.4 feet marked
C1/4 S9 in upper face, BT in lower face



From which

A 17 inch dia. Fir stub bears $S28^{\circ}53'E$ 237.1 feet marked T34S R3E S16 BT all on one face

A 19 inch dia. Fir stub bears $S18^{\circ}19'W$ 235.4 feet marked T34S R3E S17 BT all on one face

An indeterminate size Fir stump hole bears $S63^{\circ}27'W$ 14.0 feet with a rotten chunk of wood marked S17

A $2\frac{1}{2}$ inch dia. Fir bears $N42^{\circ}16'W$ 116.2 feet marked T34S R3E S8 BT all on one face

A $19\frac{1}{2}$ inch dia. Fir bears $N58^{\circ}40'E$ 138.9 feet marked T34S R3E S9 BT all on one face

One-quarter corner common to Section 8 and 9 Township 34 South Range 3 East Willamette Meridian. At the corner location I found a stone marked 1/4 beside a standard Bureau of Land Management monument, exposed 6 inches, marked

1/4
S8 S9
T34S R3E
1964

From which

An 18 inch dia. Fir bears $S41^{\circ}01'W$ 5.7 feet with an unopened face

A 17 inch dia. Fir stump bears $N86^{\circ}46'E$ 12.75 feet with reverse scribes

A 10 inch dia. Pine stump bears $N64^{\circ}E$ 46.1 feet marked 1/4 S 9 BT all on one face

Corners set this Survey

All measurements to bearing trees are to the center of tree a lower blaze unless otherwise stated. All bearing trees have a Brass washer stamped LS 1086 nailed to lower blaze.

One-quarter corner common to Section 4 and 9 Township 34 South Range 3 East Willamette Meridian. At the corner location I set a 5/8" by 36" rebar, exposed 10 inches, with a $1\frac{1}{2}$ inch Alum. cap marked

T34S R3E
1/4 S4
S9
LS1086

From which

A $9\frac{1}{2}$ inch dia. Hemlock bears $S46^{\circ}12'E$ 24.9 feet marked 1/4 S9 in upper face, BT in lower face

An 8 inch dia. Fir bears $N68^{\circ}07'E$ 21.3 feet marked 1/4 S4 in upper face, BT in lower face

One-quarter corner common to Section 9 and 16 Township 34 South Range 3 East Willamette Meridian. At the corner location I set a 5/8" by 36" rebar, exposed 6 inches, with a $1\frac{1}{2}$ inch Alum. cap marked

T34S R3E
S9
1/4 S16
LS1086

From which

An 11 inch dia. Fir bears $S82^{\circ}21'W$ 21.9 feet marked 1/4 S 16 in upper face, BT in lower face

An 11 inch dia. Yew Wood bears $N43^{\circ}E$ 38.0 feet marked 1/4 S 9 in upper face, BT in lower face

Section corner common to Section 3, 4, 9 and 10 Township 34 South Range 3 East Willamette Meridian. At the corner location I found a standard Bureau of Land Management monument, exposed 6 inches, marked

T34S R3E
S4|S3
S9|S10
1964

From which

- A 30 inch dia. Fir bears $N85^{\circ}58'W$ 155.0 feet marked 34S R3E S BT
- A 23 inch dia. Fir bears $N22^{\circ}03'E$ 208.4 feet with unopened face
- A 13 inch dia. Fir snag bears $N25^{\circ}25'E$ 116.3 feet marked 301 upper face, BT lower face
- A 12 inch dia. Fir stub 7 feet tall bears $N52^{\circ}51'W$ 95.1 feet marked 301 upper face, BT lower face

One-quarter corner common to Section 9 and 10 Township 34 South Range 3 East Willamette Meridian. At the corner location I found a Jackson County monument flush with ground, on cut slope 18 inches below top of cutbank on West side of old Railroad grade, marked

T34S R3E
1/4 S
9|10
CS
1984

From which

- A 29 inch dia. Cedar stump bears $S80^{\circ}11'W$ 17.4 feet to scribed face marked /4S
- A 25 inch dia. Fir bears $S18^{\circ}47'W$ 22.9 feet with unopened face
- A 7 inch dia. Fir bears $N20^{\circ}21'E$ 62.8 feet marked CS in upper face BT in lower face

Section corner common to Section 9, 10, 15 and 16 Township 34 South Range 3 East Willamette Meridian. At the corner location I found a standard Bureau of Land Management monument flush with ground marked

T34S R3E
S9|S10
S16|S15
1964

From which

- A 34 inch dia. Fir stump bears $S56^{\circ}04'W$ 99.5 feet with unopened face
- A 38 inch dia. Cedar bears $N43^{\circ}42'W$ 213.9 feet with BT visible in partially healed face
- A 30 inch dia. Cedar bears $S42^{\circ}09'W$ 145.2 feet with unopened face

Section corner common to Section 8, 9, 16, and 17 Township 34S Range 3 East Willamette Meridian. At the corner location I found a standard Bureau of Land Management monument, exposed 3 inches, marked

T34S R3E
S8|S9
S17|S16
1964

Survey Narrative to Comply with O.R.S. 209.250

Location: Section 9 Township 34 South Range 3 East Willamette Meridian

Survey For: Medford Corporation
P. O. Box 550
Medford, Oregon 97501

Survey By: Arthur R. Rambo PLS 1086
331 Bluff Street
Butte Falls, Oregon 97522

Purpose: To blaze and post the East half of the East half of the South line, the North-South Centerline of the Southeast quarter, the West half and the West half of the East half of the East-West Centerline of said section 9 as shown on the plat to accompany this report.

Procedure: A search of the records revealed that the North and South one-quarter corners had not been re-established. All the other corners needed for control of this survey had been re-established. I ran a random line closed traverse beginning and closing to survey number 9849, tying to the corners needed for control of this survey. I was unable to find any evidence of the North or South one-quarter corners. The position for these corners was calculated by proportionate measurement and set on this survey. The subdivision of this section was then calculated and the interior lines needed were ran closing to the exterior line.

Basis of Bearing: Survey Number 9849

Date: October 10, 1984

Corners found and accepted for control of this Survey.

Section corner common to Section 4, 5, 8 and 9 Township 34 South Range 3 East Willamette Meridian. At the corner location I found a standard Bureau of Land Management monument, exposed 7 inches, marked

T34S R3E
S5|S4
S8|S9
1964

From which

A 17 inch dia. Sugar Pine bears $S13^{\circ}56'W$ 13.2 feet with unopened face

A 26½ inch dia. Fir bears $S53^{\circ}56'E$ 12.3 feet with BT visible in chopped out face

An 11 inch dia. Hemlock bears $S79^{\circ}23'E$ 44.2 feet with unopened face

An 11 inch dia. Fir bears $N44^{\circ}27'E$ 21.5 feet with unopened face

An 11½ inch dia. Fir on the ground bears $N60^{\circ}59'W$ 53.9 feet to root