

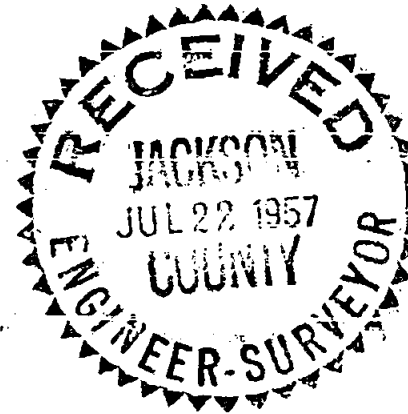
1009  
6001

SURVEY FOR MR. N. E. JUDY.  
IN S. 2, T. 38S. R. 2 W. (W.M. JACKSON COUNTY, OREGON.  
July 1957. Bearings from solar observations.  
Scale 1"=100'

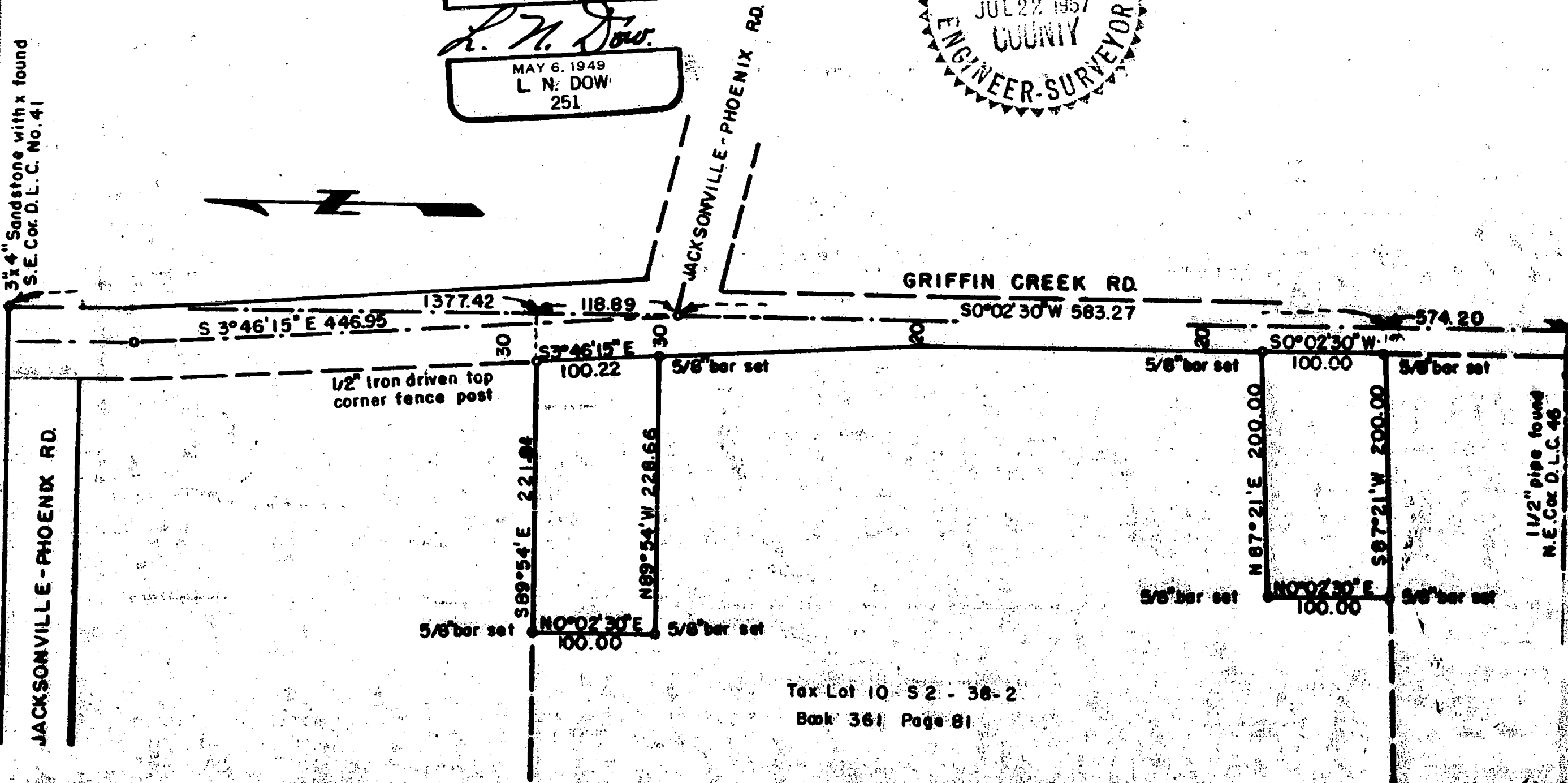
REGISTERED  
OREGON  
LAND SURVEYOR

*L. N. Dow*

MAY 6, 1949  
L. N. DOW  
251



3x4" Sandstone with x found  
S.E. Cor. D.L.C. No. 41



Tax Lot 10 S 2 - 38-2  
Book 361 Page 81

1009

Written narrative to accompany plat for survey NO/ 1009

Survey for Mr. N.E. Judy, Griffin Creek Road.

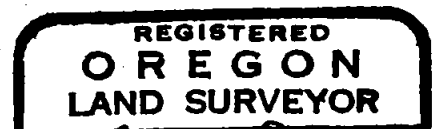
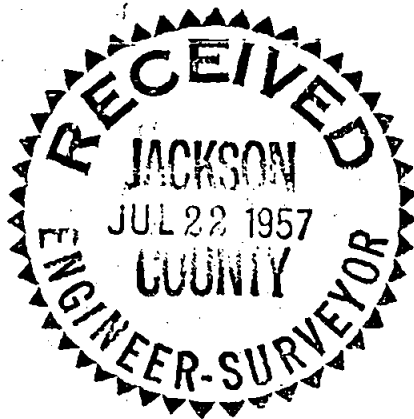
Location Tax Lot 10- Section 2, T 38 S. R 2 West. W.M.  
Jackson County, Oregon.

Date July 1757.

Purpose to stake out two lots ( parcels) for sale purposes.

Procedure: Having just established the northeast corner of this property, which is the southeast corner of Don Minear tract, the frontage of which is now being subdivided into lots. This point we set is a 1/2" bar driven in the top of a 12" corner property fence post ( an anchor post 12" x 5 feet high) We then set a 5/8" bar N 89° 54' W 221.81 feet from the northeast corner, which bar has since been replaced with a concrete monument with plate for the initial point of Broadlands Subdivision now being platted. We then ran S 0° 02' 30" W 100.00 feet and set a 5/8" bar for the southwest corner, then from the southwest corner we ran S 89° 54' E 228.66 feet and set a 5/8" bar on the west line of Griffin Creek Road for the southeast corner of the tract.

To establish the southeast corner of said Tax Lot 10 S 2 38-2 it was necessary to locate the N.E. Cor of D.L.C. 46, where we found a 1 1/2" pipe, then chaining down the west line of D.L.C. 40 record 574.20 feet, then ran S 87° 21' W 20 feet and set a 5/8" bar for said southeast corner, we then continued S 87° 21' W 200 feet and set a 5/8" bar, then ran N 0° 02' 30" E 100.00 feet and set a 5/8" bar then ran N 87° 21' E 200.00 feet to the west line of Griffin Creek Road and set a 5/8" bar for the northeast corner of the tract being surveyed. We then chained the entire frontage of said Tax Lot 10 as now assessed and discover that this property is somewhat more frontage than the discription leads one to believe, however the discription being qualified covers that point.



*L. N. Dow*

