

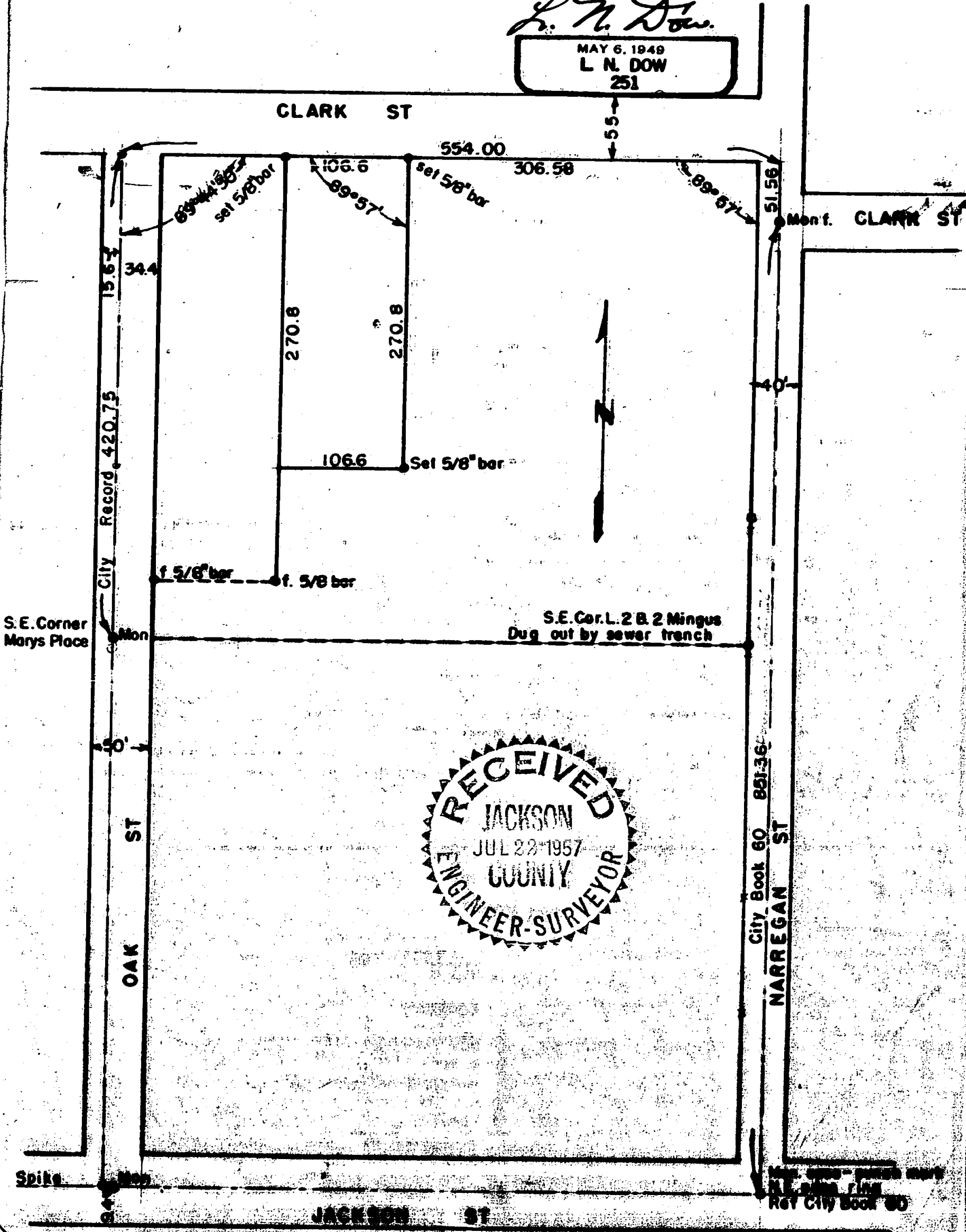
**SURVEY FOR Mr. J.H.GRIFFITH  
IN MINGUS SUBDIVISION, MEDFORD, JACKSON COUNTY, OREGON.  
Date July 1957 - Scale 1"=100'**

1007

REGISTERED  
**OREGON**  
LAND SURVEYOR

*L. N. Dow*

MAY 6, 1949  
**L. N. DOW**  
251



1007

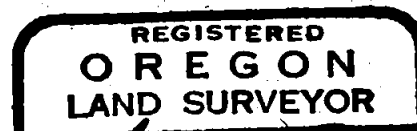
Written narrative to accompany plat for survey NO. 1007

Survey for J.H. Griffith, Clark Street Medford, Oregon.

Located in Mingus Subdivision, Medford, Oregon.

Purpose to locate frontage on Clark Street and East line.

Procedure. Having the monument at Jackson Street and Oak Street, and a spike for the offset center of Oak Street at a point on Jackson Street 9.4 feet west of the monument, and a monument on Oak street at the southeast corner of Mary's Place Addition we produced the offset centerline to the south line of Clark Street. We then located the monument on Clark Street and Narragan Avenue, and by chinking the notes from City Book 60 located the punch mark on the monument case at Narregan and Jackson Street, we then produced the centerline of narregan street to the south line of Clark Street, we then ran west on Clark Street record 306.58 feet and set a 5/8" bar, then continued west 106.6 feet and set a 5/8" bar for the northwest corner. We then returned to the first point set and ran south parallel to Narregan Avenue 270.8 feet and set a 5/8" bar for the southeast corner.



*L. N. Dow*

