

HISTORY OF SURVEYS

The survey of the east boundary, and subdivision of Township 35 South, Range 3 East, was performed by Nathaniel Ford under contract No. 58, dated April 18, 1855.

The east boundary of Township 35 South, Range 3 East, was resurveyed by Rufus Moore under contract No. 504, dated May 27, 1884.

The southeast and southwest section corners of section 13 were remonumented from original evidence by the Bureau of Land Management in 1966.

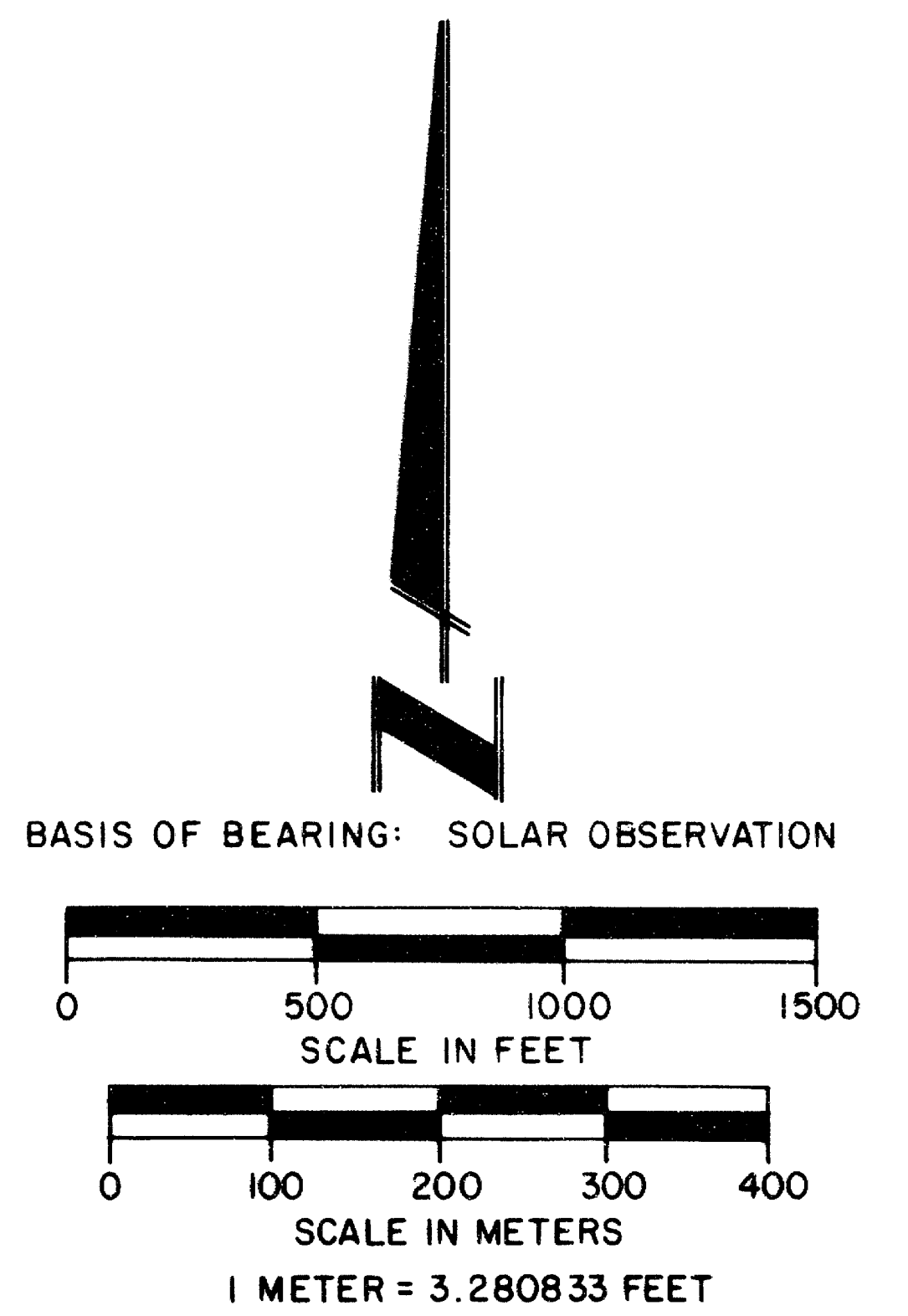
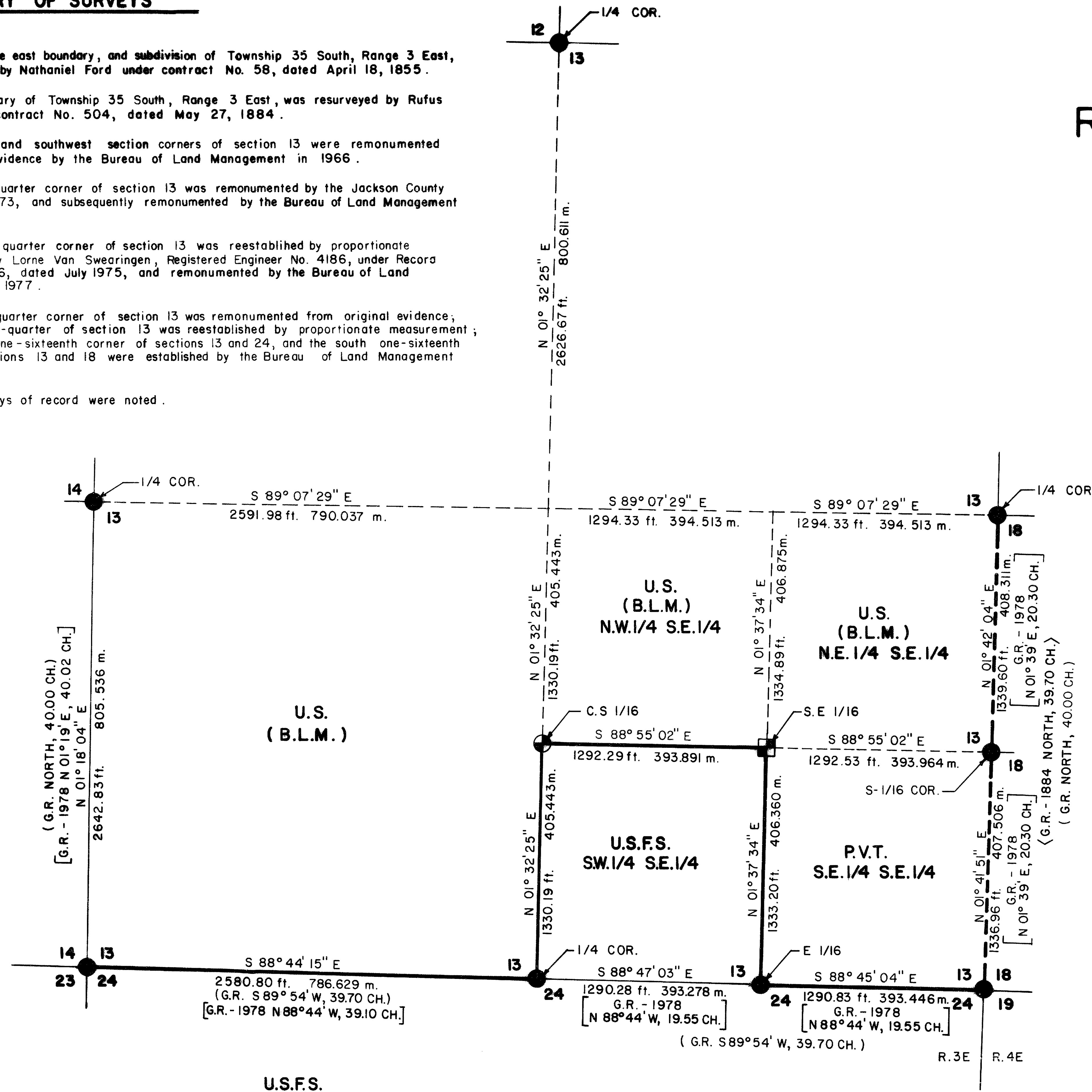
The east one-quarter corner of section 13 was remonumented by the Jackson County Surveyor in 1973, and subsequently remonumented by the Bureau of Land Management in 1978.

The north one-quarter corner of section 13 was reestablished by proportionate measurement by Lorne Van Swearingen, Registered Engineer No. 4186, under Record Survey No. 6106, dated July 1975, and remonumented by the Bureau of Land Management in 1977.

The west one-quarter corner of section 13 was remonumented from original evidence; The south one-quarter of section 13 was reestablished by proportionate measurement; and the east one-sixteenth corner of sections 13 and 24, and the south one-sixteenth corner of sections 13 and 18 were established by the Bureau of Land Management in 1978.

No other surveys of record were noted.

**MAP OF SURVEY
FOR
ROGUE RIVER NATIONAL FOREST
P.O. BOX 520
MEDFORD, OREGON.
AUGUST 15, 1984**



LEGEND

- FOUND STANDARD B.L.M. BRASS CAP MONUMENT.
- ⊕ SET 5/8" DIA. X 24" LONG IRON PIN WITH ALUM. CAP.
- ⊕ SET STANDARD 2-1/2" DIA. X 30" LONG IRON POST WITH 2-1/2" DIA. BRASS CAP.
- PROPERTY LINE MARKED AND POSTED THIS SURVEY.
- - - PROPERTY LINE PREVIOUSLY MARKED AND POSTED.
- SECTION LINE CALCULATED FROM TRAVERSE SURVEY.
- - - SUBDIVISION LINE CALCULATED FROM TRAVERSE SURVEY.
- () DENOTES 1855 GOV'T. RECORD.
- < > DENOTES 1884 GOV'T. RECORD.
- [] DENOTES 1978 GOV'T. RECORD.

U.S.F.S.

CERTIFICATE OF SURVEY

I, Harold L. Center, Registration No. 1071 Registered Professional Land Surveyor, State of Oregon, hereby certify that this map correctly represents a survey made by me or under my direction in conformance with the laws of the State of Oregon, at the request of the U.S. Forest Service.

** RECEIVED **
Date: 9/12/84 By: SK
This survey consists of:
1 section
6 posts
JACKSON COUNTY SURVEYOR

REGISTERED PROFESSIONAL LAND SURVEYOR
HAROLD L. CENTER
OREGON
MAY 20, 1976
No. 1071

U.S. DEPARTMENT OF AGRICULTURE
FOREST SERVICE
REGION 6 ROGUE RIVER NATIONAL FOREST

DEPENDENT RESURVEY
AND
SECTION SUBDIVISION
SECTION 13, T. 35 S., R. 3 E., W.M.
JACKSON COUNTY, OREGON

REVIEWED BY: [Signature] DATE: 9/14/84
APPROVED BY: [Signature] DATE: 9/14/84
PROJECT 84-14

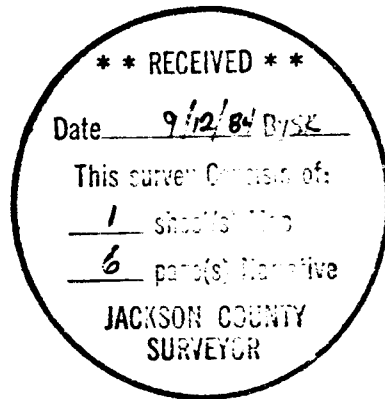
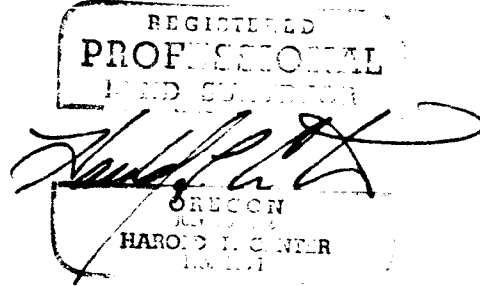
From which the following references:

A 10-inch diameter fir bears N86°11'E., 42.50 feet distance, scribed
"SE 1/16 S13 LS 1071 BT" on a double blaze.

A 15-inch diameter fir bears S78°03'W., 60.50 feet distance, scribed
"SE 1/16 S13 LS 1071 BT" on a double blaze.

August 15, 1984

HAROLD L. CENTER
Registered Professional Land Surveyor
Oregon Certificate No. 1071



U.S. Dept. of Interior
 Unlawful to Disturb
 T35S R3E
 1/4
 S14 • S13
 1978
 Cadastral Survey
 Bureau of Land Management

From which the following references:

An 11-inch diameter fir bears N08°40'E., 16.35 feet distance, with a healed blaze.

A 12-inch diameter fir bears S71°25'W., 26.30 feet distance, with a healed blaze.

Root hole of a burnt pine, diameter indeterminate, bears N64°27'W., 26.60 feet distance, with burnt remains and scribe marks "BT" found on a piece of wood in the root hole.

Corners Established This Survey

Center-south one-sixteenth corner of Section 13, Township 35 South, Range 3 East.

At the corner point I set a 2½-inch diameter galvanized iron post with a 2½-inch diameter brass cap marked:

T35S R3E
 C
 S 1/16 | S13
 C
 1984
 LS 1071

From which the following references:

An 18-inch diameter fir bears S66°55'E., 36.50 feet distance, scribed "CS 1/16 S13 LS 1071 BT" on a double blaze.

A 15-inch diameter fir bears S63°09'W., 49.10 feet distance, scribed "CS 1/16 S13 LS 1071 BT" on a double blaze.

Southeast one-sixteenth corner of Section 13, Township 35 South, Range 3 East.

At the corner point I set a 5/8-inch diameter x 24-inch long iron pin with an aluminum cap marked:

T35S R3E
 SE 1/16 — | — S13
 1984
 LS 1071

From which the following references:

An 8-inch diameter cedar bears N15°43'E., 33.30 feet distance, with scribe marks "1/16 S13 BT" visible on a partially healed blaze.

A 12-inch diameter cedar bears S54°14'E., 61.30 feet distance, with scribe marks "1/16 S24 BT" visible on a partially healed blaze.

One-quarter corner common to Sections 13 and 24, Township 35 South, Range 3 East.

At the corner point I found a standard Bureau of Land Management brass cap monument marked:

U.S. Dept. of Interior
Unlawful to Disturb

1/4 $\frac{S13}{S24}$

1978
Cadastral Survey
Bureau of Land Management

From which the following references:

A 9-inch diameter pine bears N30°36'E., 9.30 feet distance, with a partially healed blaze.

A 14-inch diameter fir bears S39°33'W., 6.20 feet distance, with a healed single blaze.

Section corner common to Sections 13, 14, 23 and 24, Township 35 South, Range 3 East.

At the corner point I found a standard Bureau of Land Management brass cap monument marked:

U.S. Dept. of Interior
Unlawful to Disturb

T35S R3E
S14 | S13

S23 | S24

Cadastral Survey
Bureau of Land Management

From which the following references:

A 16-inch diameter fir bears N12°07'E., 30.95 feet distance, with a healed blaze.

A 14-inch diameter fir bears S06°44'W., 1.80 feet distance, with a healed blaze.

A 22-inch diameter fir bears S43°06'W., 21.80 feet distance, with a healed blaze.

A 15-inch diameter fir bears N67°22'W., 23.20 feet distance, with a healed blaze.

A 32-inch diameter pine bears N41°44'W., 26.75 feet distance, with a healed blaze.

One-quarter corner common to Sections 13 and 14, Township 35 South, Range 3 East.

At the corner point I found a standard Bureau of Land Management brass cap monument marked:

U.S. Dept. of Interior
Unlawful to Disturb
S 1/16

S13 | S18

1978

Cadastral Survey
Bureau of Land Management

From which the following references:

A 12-inch diameter fir bears N44°07'E., 28.50 feet distance, with a healed blaze.

A 9-inch diameter fir bears S26°49'W., 34.63 feet distance, with a healed blaze.

Section corner common to Sections 13 and 24, Township 35 South, Range 3 East, and Sections 18 and 19, Township 35 South, Range 4 East.

At the corner point I found a standard Bureau of Land Management brass cap monument marked:

U.S. Dept. of Interior
Unlawful to Disturb
T35S

R3E | R4E

S13 | S18

S24 | S19

1966

Cadastral Survey
Bureau of Land Management

From which the following references:

A 26-inch diameter pine bears N32°27'E., 24.50 feet distance, with scribe marks "35S R3E S18 BT" visible on a partially healed blaze.

A 28-inch diameter pine bears S19°08'E., 10.25 feet distance, with a partially healed blaze.

A 30-inch diameter oak bears S19°33'W., 130.91 feet distance, with a rotted, hollow face.

A 15-inch diameter pine bears S24°53'W., 81.61 feet distance, with a partially healed blaze.

A 21-inch diameter pine bears N46°37'W., 13.50 feet distance, with a partially healed blaze.

East one-sixteenth corner common to Sections 13 and 24, Township 35 South, Range 3 East.

At the corner point I found a standard Bureau of Land Management brass cap monument marked:

U.S. Dept. of Interior
Unlawful to Disturb

E 1/16 ——— S13
 S24

1978

Cadastral Survey
Bureau of Land Management

At the corner point I found a standard Bureau of Land Management brass cap monument marked:

U.S. Dept. of Interior
Unlawful to Disturb
T35S R3E

$\frac{1}{4}$ — $\frac{S12}{S13}$

1977
Cadastral Survey
Bureau of Land Management

From which the following references:

A 9-inch diameter fir bears N03°38'E., 5.00 feet distance, with a healed blaze.

A 15-inch diameter fir bears S72°30'W., 15.30 feet distance, with a healed blaze.

One-quarter corner common to Section 13, Township 35 South, Range 3 East, and Section 18, Township 35 South, Range 4 East.

At the corner point I found a standard Bureau of Land Management brass cap monument marked:

U.S. Dept. of Interior
Unlawful to Disturb
T35S

$\frac{1}{4}$
R3E | R4E
S13 | S18

1978
Cadastral Survey
Bureau of Land Management

From which the following references:

A 14-inch diameter oak bears N29°11'E., 59.68 feet distance, with a burnt open face; no scribe marks visible.

A 13-inch diameter fir bears S72°25'E., 21.80 feet distance, with a single healed blaze.

A 15-inch diameter fir bears S01°12'E., 20.70 feet distance, with a double healed blaze.

A 16-inch diameter fir bears N87°14'W., 40.20 feet distance, with a double healed blaze.

A 37-inch diameter fir snag, 10 feet high, bears N84°48'W., 134.33 feet distance, no scribe marks visible. Fir snag is badly decayed.

A 28-inch diameter pine bears N04°16'W., 47.53 feet distance, with scribe marks "4S RS" visible on an opened blaze.

South one-sixteenth corner common to Section 13, Township 35 South, Range 3 East, and Section 18, Township 35 South, Range 4 East.

At the corner point I found a standard Bureau of Land Management brass cap monument marked:

SURVEY NARRATIVE TO COMPLY WITH
PARAGRAPH 209.250 OREGON REVISED STATUTES

SURVEY FOR: Rogue River National Forest
P. O. Box 520
Medford, OR 97501

LOCATION: Section 13, Township 35 South, Range 3 East,
Willamette Meridian, Jackson County, Oregon.

BASIS OF BEARING: Solar observation

PURPOSE: To monument corners and mark and post National
Forest lands within Section 13.

PROCEDURE: Prior to commencement of this survey, an investiga-
tion of the required controlling corners was made.
The Southeast and Southwest section corners of
Section 13 were remonumented from original evidence
by the Bureau of Land Management in 1966. The East
one-quarter corner of Section 13 was remonumented
by the Jackson County Surveyor in 1973, and sub-
sequently remonumented by the Bureau of Land
Management in 1978. The North one-quarter corner
of Section 13 was reestablished by single propor-
tionate measurement by Lorne Van Swearingen,
Registered Engineer No. 4186, under Record Survey
No. 6106, dated July 1975, and subsequently remonu-
mented by the Bureau of Land Management in 1977.
In 1978, the Bureau of Land Management remonumented
the West one-quarter corner of Section 13 from ori-
ginal evidence, reestablished the South one-quarter
corner of Section 13 by single proportionate
measurement, and established the South one-
sixteenth corner common to Sections 13 and 18, and
the East one-sixteenth corner common to Sections 13
and 24. With the required corner control iden-
tified, a random line traverse was ran around the
perimeter of Section 13, tying the required
controlling corners to a closed traverse. From
this information, positions for the interior cor-
ners were computed and established. From the
established controlling corners, a traverse was ran
along the interior lines, closing to the perimeter
traverse. From this information, monuments were
established and lines posted as shown on the
attached map of survey.

This survey was performed utilizing a Wild T-2
Theodolite and a Hewlett-Packard 3808A Electronic
Distance Meter.

The National Forest property lines were posted with
aluminum traffic delineator posts with National
Forest boundary signs attached. Trees along the
true line were blazed and painted with red timber
marking paint.

Corners Accepted For Control

One-quarter corner common to Sections 12 and 13, Township 35 South, Range 3
East.